



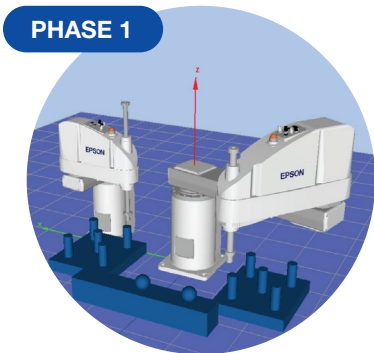
Elevating Education with Robotic Solutions

Robots are great tools for teaching STEAM concepts. They provide a practical and fun way to bring science and engineering to life, but how do you get started? Epson's robots and software reduce the barriers stopping you from using robots in the classroom and provide a pathway for future growth and expansion.



Epson Education Pathway

Epson is your partner as you develop, build and scale your robotics education program. Our products enable robot labs at multiple entry levels with easy expansion for future growth.



PHASE 1

Virtual Robotic Lab

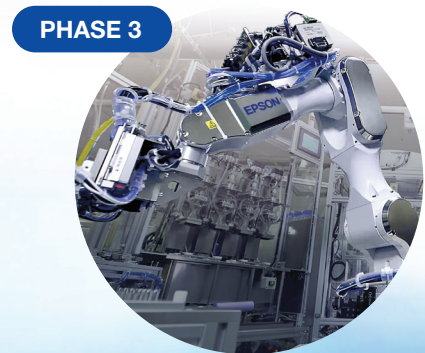
Low cost, fast development,
low upkeep



PHASE 2

Virtual to Reality Labs

Easily translate virtual applications
to space- and cost-efficient
real-life workcells

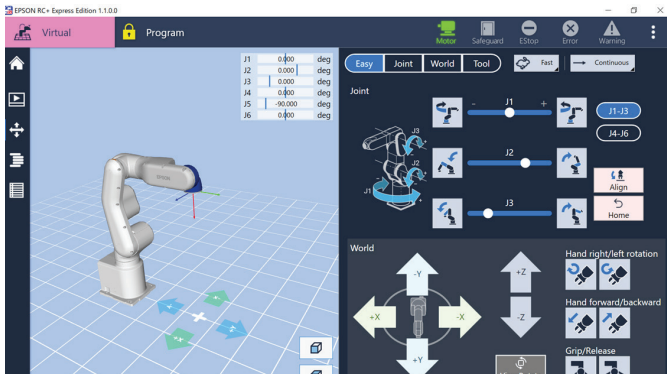


PHASE 3

Advanced Labs

Expand your real-world lab
with a variety of robot
configurations and tools

Virtual Robotic Lab



Get started with your virtual robotic teaching lab today with Epson RC+® software

- **Simplicity:** Epson's RC+ robotic software is rated #1 for ease of use
- **Efficiency:** Quickly develop content for your automation lab
- **Scalable:** Easily expand course capacity to support more students; over 300 robot configurations included
- **Cost Effective:** No lost or damaged labware, no HW upkeep or maintenance cost

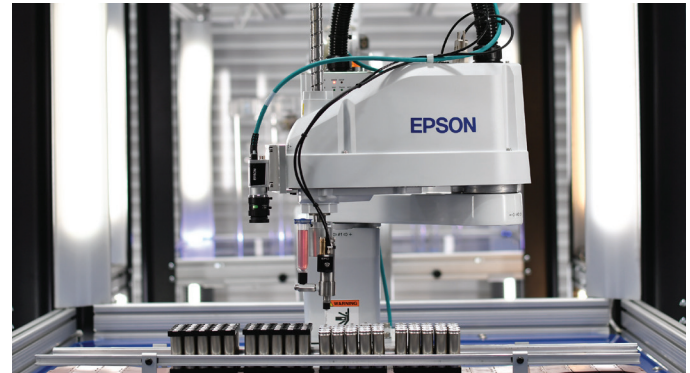
Virtual to Reality



Add cost- and space-efficient real-world robots discounted for education

- **Simplicity:** Same programming environment in virtual or real-life cells
- **Efficiency:** Check programs virtually, run in reality
- **Scalable:** Class can use virtual or real-world robots interchangeably
- **Cost Effective:** No need to duplicate workcells, more students can share fewer robots

Advanced Labs



Expand your lab even further with advanced mechanisms and solutions

- **Simplicity:** Add integrated solution options (vision, part feeding) quickly and simply
- **Efficiency:** Test out advanced teaching scenarios in simulation before implementation
- **Scalable:** All simulated robots have real-life counterparts
- **Cost Effective:** Add new robot configurations and application cells instead of duplicating the same cell. Students get real-world experience

For more information, please visit: epson.com/robotics-for-education