

DIRECT-TO-GARMENT PRINTERS
SURECOLOR™ SC-F3030

EPSON

Jackets

T-shirts

Hoodies

Pillow Covers

Tote Bags

Prints even
on the neck
and sleeve



Replaceable Ink Packs
(1.5 L each)

**SUPER-SIZING PROFITS IN
DIRECT-TO-GARMENT PRINTING
WITH ECONOMY, VOLUME AND
CUTTING-EDGE FUNCTIONS**

Introducing the SureColor™ SC-F3030
Industrial Direct-to-Garment Printer

Take Control of Your Increasing Production Workloads

Epson's new direct-to-garment (DTG) printer offers a low total cost of ownership (TCO) for mid-to-large garment production businesses and t-shirt suppliers.

Businesses that demand high levels of accuracy, quick turnaround times, and the ability to produce complex designs on a variety of garments, will find that the SC-F3030 offers faultlessly reliable production efficiency, at speed.

For the first time in the DTG line-up, Epson has introduced its bulk ink solution with compact 1.5-litre ink pouches that help lower the total cost of ownership and reduce downtime. The intuitive, highly-durable design has features that will keep even the inexperienced user operating the printer more efficiently, while keeping print quality and accuracy consistently high.

Nozzle Verification
Technology

Auto Platen Gap
Adjustment

Sophisticated User
Interface



High Quality Output

Easy Access
Maintenance Area

Bulk Ink Solution



Boost Productivity with Innovative Epson Technology

The SC-F3030 has built-in features that ensure you not only meet your deadlines, but also retain your customers. Plus, bulk orders don't have to mean bland designs – our colour technology lets you keep creative standards high.

Printhead technology (NVT)

Nozzle Verification Technology (NVT) automatically checks that nozzles are firing accurately. Should any nozzle have issues, our Piezo technology will intuitively compensate and ensure that high-quality printing is maintained.

Auto platen gap adjustment

Able to accommodate thicknesses up to 25.5 mm, the printer uses its sensors to automatically detect garment's surface height and adjust accordingly, reducing both operator error and waste.

Faster print speed without compromising on quality

Print on light and dark garments nearly twice as fast as comparable products in the DTG market. Protect the printhead and limit dust adherence thanks to the SC-F3030's wide platen gap and optimised large dust catcher.



Work Smarter and Increase Your Business Efficiency

Epson innovation is designed to increase output and quality levels, and effortless operation. We work hard to ensure those who use our printers work more comfortably – with more information and as much control over the process as possible.

A Sophisticated User Interface

User-friendly 4.3-inch touch screen makes it easy to check current and next print settings. The inclusion of a warning buzzer ensures you will receive new status notifications, even in noisy production areas.

Bulk Ink Solution

To keep you printing, our Bulk Ink Solution with 1.5-litre ink pouches is simple and compact. With less frequent ink changes and more cost-effective pack sizes, the Bulk Ink Solution improves both productivity and TCO. Ink status is shown via LED indicators and, with front access, ink changeover is quick and easy.

New Garment Creator

For extra control over your output quality, Epson's new Garment Creator software offers a variety of built-in settings to meet different requirements across both light and dark garments.

Environmental Standards

Enjoy peace of mind, knowing that while the SC-F3030 is hard at work, it's also fulfilling today's tougher environmental standards. The printer meets the Global Organic Textile Standard (GOTS) and with Eco Passport Certificate, you're assured that you comply with the Oeko-Tex Standard 100 for high-standard safety ecological textiles.



Print large orders on cotton and cotton-blend products

Unlock new production possibilities with dedicated DTG solutions.

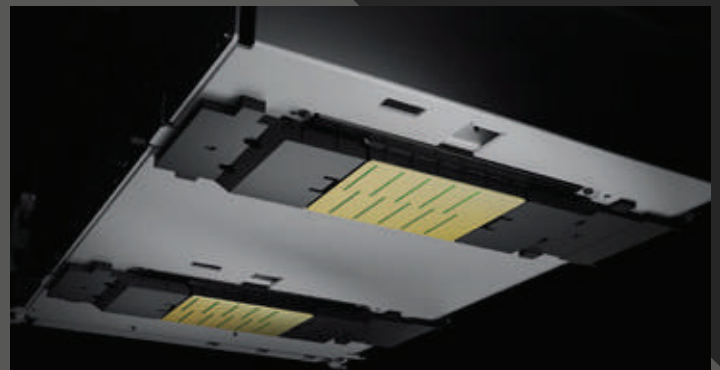
Fast Turnaround

Epson's SC-F3030 benefits from two μ TFP printheads, delivering the quality you need as well as the ability to fulfil large, quick-turnaround orders.



Designed for Reliability and Uptime

Features such as Epson's Nozzle Verification Technology and droplet placement technology have been designed to maximise output. Production uptime is also significantly increased thanks to a combination of improved nozzle reliability and a reduced need for manual operation.



Monitor Production Levels in Real Time

Review the status of your printers on smart devices or your PC via the Production Monitor. With clear graphics, you'll be able to easily analyse productivity and receive clear operational updates every day, to support high productivity and efficiency.



Improved Maintenance

The printer's new carriage design, with its optimised large dust catcher, reduces the risk of nozzle issues and the need for manual intervention. Moreover, the print accuracy is enhanced by new ink droplet placement technology, which maximises the output.



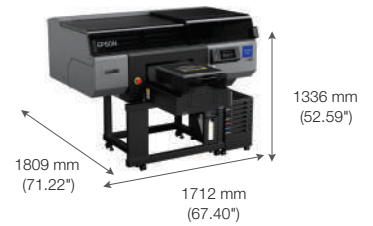
SPECIFICATIONS
SURECOLOR™ SC-F3030



MODEL NUMBER	SC-F3030
Printhead Type	PrecisionCore™ Micro TFP
Nozzle configuration	14,400 nozzles (Colour - 6,400 nozzles: 800 nozzles x 8 lines x 1 head), (White - 8,000 nozzles: 800 nozzles x 10 lines x 1 head)
Print Speed (Default Setting)	
Dark T-shirt	1,200 x 600 dpi 4-pass HD Bi-d: 52 sec/sheet Production (4-pass) - 27 sec
Light T-shirt	1,200 x 600 dpi 4-pass HD Bi-d: 34 sec / sheet Production (4-pass Colour + 8-pass White) - 87 sec
Maximum Resolution	1200 x 1200 dpi
Droplet Size	12.1 pl
Ink	
Ink Type	UltraChrome™ DG ink
Pack	1.5 L
Media	100% cotton or polyester and Polycotton blend
Connectivity	
Interfaces	Hi-Speed USB 2.0 x 2 (for PCx1, for USB flash memory x 1), 1000 Base-T/100 Base-TX/10 Base-T
Printer language	ESC/P raster
Power Supply	Printer: AC100-240V, 6.8 - 3.2A; Bulk Ink Solution: AC100-240V, 1.4A
System Requirements	
Windows	OS: Windows 8.1 or later, CPU: Multi-core processor (Recommend: Core i7 8th generation or later), Memory: 2 GB or more free space (Recommend: 16 GB or more), Storage: HDD 32GB or more free space (Recommend: SSD, Monitor: 1024x768 or more)
Mac	OS: Mac OS X (10.12 (Sierra) or later, CPU: Multi-core processor (Recommend: Core i7 8th generation or later), Memory: 2GB or more free space (Recommend: 16 GB or more), Storage: HDD 32 GB or more free space (Recommend: SSD, Monitor: 1024 x 768 or more)
Platen	Hanger Platen - L (406 x 508 mm), Hanger Platen - M (356 x 406 mm), Hanger Platen - S (254 x 305 mm), Extra Small Platen (178 x 203 mm), Medium Grooved Platen (356 x 406 mm), Sleeve Platen (102 x 102 mm)
Warranty	1-year self-repair coverage
Inks and Consumables	
Ink Supply Unit, CL, 1500	C13T44A900
Ink Supply Unit, BK, 1500, A/A	C13T48A100
Ink Supply Unit, C, 1500, A/A	C13T48A200
Ink Supply Unit, M, 1500, A/A	C13T48A300
Ink Supply Unit, Y, 1500, A/A	C13T48A400
Ink Supply Unit, WH, 1500, A/A	C13T48AA00
Ink Supply Unit, ML, 1500, A/A	C13T48AB00
Pre-Treatment Liquid	C13T736100
Polyester Pre-Treatment Liquid	C13T43R200
Head Cleaning Set	C13S210105
Flushing Pad Set	C13S210107
Anti-Drying Cap	C13S210109
Air filter	C13S210111
Product Options	
Large Hanger Platen 406 x 508 mm	C12C936241
Medium Hanger Platen 356 x 406 mm	C12C936261
Small Hanger Platen 254 x 305 mm	C12C936281
Extra small platen 178 x 203 mm	C12C933951
Medium Groove (Polo) platen 356 x 406 mm	C12C933961
Sleeve Platen 102 x 102 mm	C12C933971

Dimensions & Weight

Weight: 330 kg (727.5 lbs)



Pre treatment liquid
For Cotton



Ink



Pre treatment liquid
For Poly

© 2023 Epson India Pvt. Ltd. All Rights Reserved. Reproduction in part or in whole, without the written permission from Epson, is strictly prohibited. EPSON and EXCEED YOUR VISION are registered trademarks of Seiko Epson Corporation. All other product names and other company names used herein are for identification purposes only and are the trademarks or registered trademarks of their respective owners. Epson disclaims any and all rights in those marks. Print samples shown are simulations only. Specifications and product availability are subject to change without notice and may vary between countries. Please check with local Epson offices for more information.

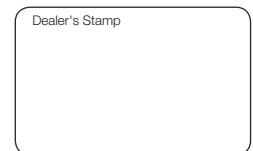
Information correct as of September 2023

EPSON INDIA PVT. LTD.
12th Floor, The Millenia, Tower A, No.1
Murphy Road, Ulsoor, Bangalore 560 008
Tel: 080-4566 5000, Fax: 080-4566 5005

Scan the QR code or Click here to contact an Epson representative close to you.



CONTACT EPSON TODAY! EMAIL: vasu@eid.epson.co.in



Epson Helpline: For product info or service - 1800 425 0011
For service: 1800 123 001 600 (9AM - 6PM) (Mon-Sat)
Email: lfp@epsonindia.in