

YOUR IDEAL, HIGH VOLUME A4 SCANNING SOLUTION.



Epson's latest series of A4 WorkForce scanners deliver greater productivity and reliability with built-in 100-sheet ADF and high daily scan volumes of 3,000 pages for DS-6500 and 4,000 pages for DS-7500 with ideal scanning speeds of up to 40ppm/80ipm. Bundled with Document Capture Pro software which offers Scan-to-Print, Scan-to-Cloud, email and FTP, document management becomes a breeze.



Scan
up to A4



Speed up to
80 ipm



OCR



Ethernet



Power
Savings



WorkForce DS-6500
25ppm/50ipm



WorkForce DS-7500
40ppm/80ipm

ENGINEERED FOR BUSINESS

High Speed Duplex Scanning

Double-sided documents scanned at one-pass, at speeds of up to 50ipm for DS-6500 and 80ipm for DS-7500.

Reliable Performance with Convenient ADF

100-sheet capacity ADF with ultrasonic sensor to prevent double-feeding, and settings for Standard or Thin Paper scanning.

Optional Network Support

With this option, users can scan directly to their PC through the network.



WorkForce DS-6500 (50ipm) and DS-7500 (80ipm) stand ready to deliver blazing fast performance with utmost reliability. Both models feature convenient 100-sheet capacity ADFs for speedy duplex scanning in one pass while flatbed platens offer added flexibility for scanning books and odd-shaped documents.



High Speed Duplex Scanning

DS-6500 and DS-7500 scan with impressive speed in both simplex and duplex modes, resulting in significant improvement in office productivity.

Scanning speed:

DS-6500: 25 ppm (simplex), 50 ipm (1-pass duplex)

DS-7500: 40 ppm (simplex), 80 ipm (1-pass duplex)



Reliable Performance with Convenient ADF

High-capacity 100-sheet ADF readily accepts a wide variety of standard or thin paper documents*. It is fitted with an ultrasonic sensor which prevents double-feeding and alerts users in the event of a mis-feed.



* Paper Document Size < A6 = 60-190gsm; All other sizes = 50-128gsm

Optional Network Support

With the optional network interface panel, scanners can be shared amongst a work group without the need for USB connections. Users can easily select a desired PC within the network via the Document Capture Pro application installed on a Client or Server PC.



Easy navigation of job settings with LCD panel on network interface panel.

High Durability and Endurance

WorkForce scanners are designed to support the needs of busy offices and workgroups. Choose the DS-6500 for its high daily duty cycle of 3,000 pages, or go with the DS-7500 for its higher rating of 4,000 pages per day.

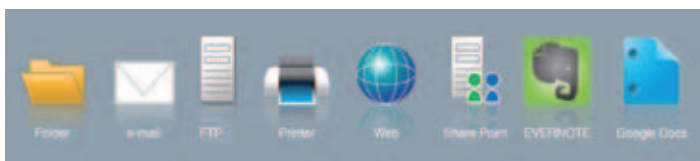
Easy File Management



WorkForce scanners come bundled with professional software that allow you to easily manage your scanned files.

Document Capture Pro (Windows Only)

Easily scan, view, edit, save and transfer scanned documents. It can optically recognise barcodes, characters and blank pages in scanned documents to separate sections into different folders. It provides quick access to post-scan destinations, including scan-to-print, email, Windows™ Public Folder, FTP, Web Folder, and Scan-to-Cloud services such as Microsoft® SharePoint Server, Evernote® and Google® Docs™. Document Capture Pro also supports up to 30 customisable job settings.



Epson Event Manager (Mac only)*

Facilitates easier regular scanning on Mac computers with 1 pre-defined and 10 customisable jobs.

*This application supports USB only. Network option is not supported.

ABBYY FineReader*

This OCR software enables searchable content on your scanned PDFs for greater productivity. Asian languages such as Traditional Chinese, Simplified Chinese and Japanese are supported.

* Version 9 for Windows, version 8 for Mac OS X.

Saves Time, Money and the Environment



DS-6500 and DS-7500 are equipped with energy-saving LED light sources that require zero warm-up time. The result is instantly responsive scanning with lower power consumption. Both models are also Energy Star® certified, with a power-saving sleep mode that reduces energy consumption even further.

Fast and Flexible Flatbed Scanning

The flatbed scanner lets you scan books, bound documents and even small objects quickly and easily.

High Quality and High Speed

With its high-resolution 1200 dpi CCD sensor, images, graphics and text are captured with amazing clarity and accuracy. Fast scanning speeds at 300dpi deliver quicker results over other scanners in its class.

Book Spine Correction (Windows Only)

Scans are corrected for shadow and curvature around book spines.



Powerful and Comprehensive Epson Scan Features

The Epson Scan suite of functions includes numerous useful and innovative capabilities including the following highlights:

PDF/A-1b (ISO) Compliant Files

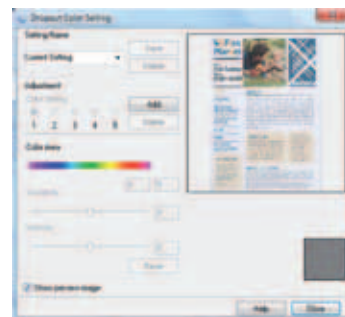
Stores original font size and maintains scans as an original copy.

Power Off Timer Setting

Save power consumption by programming the scanner to Power Off after being idle for a set time.

Colour Enhancement & Colour Dropout

Users can pick one of the preset colours (Red, green, blue, pink, purple, yellow or orange) or use the customised settings to remove or enhance the visibility of ink signatures such as "Confidential" and "Urgent" stamps. This feature can also enhance or dropout multiple colours (max. 5) with one pass.



PARTNERS IN PERFECTION



WorkForce Pro WP-4011

Improve your productivity with the WorkForce Pro WP-4011 networkable printer that delivers excellent quality at very low running costs.



AcuLaser C500DN

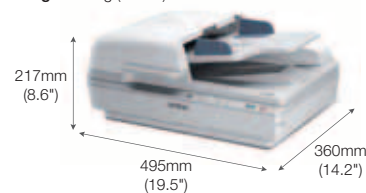
The AcuLaser C500DN is ideal for workgroups that require volume printing with fast performance and high reliability.

MODEL NUMBER	DS-6500	DS-7500
Flatbed Specifications		
Type	A4 flatbed colour image scanner	
Scanning Method	Fixed document and moving carriage	
Optical Sensor	4-line colour CCD	
Light Source	White LED	
Optical Resolution	1200 dpi x 1200 dpi	
Output Resolution ¹	50 dpi - 4800 dpi (1 dpi increments), 7200 dpi, 9600 dpi	
Max. Document Size	215.9mm x 297mm	
Flatbed Scanning Speed ²		
Resolution	Colour (24-bit)	Line Speed
300 dpi	8.0 sec or less	0.600 msec/line
600 dpi	22 sec or less	1.690 msec/line
ADF Specifications	Grey (8-bit)	Line Speed
Type	A4 sheet-fed, one-pass duplex scanner	
Scanning Method	Fixed carriage and moving document	
Optical Sensor	4-line colour CCD	
Light Source	White LED	
Optical Resolution	600 dpi x 600 dpi	
Output Resolution ¹	50 - 600 dpi (in 1 dpi increments)	
Document Size	Min: 100mm x 148mm. Max: 215.9mm x 1016mm	
Document Thickness		
All Sizes	50 gsm - 128 gsm	
< A6	60 gsm - 190 gsm	
Load Orientation	Face up, load from top	
Input Tray Capacity	100 sheets (80 gsm)	
ADF Scanning Speed		
Resolution	Colour (24-bit)	Line Speed
200 dpi	25/50	25/50
300 dpi	25/50	25/50
600 dpi	4/8	6/12
Daily Duty Cycle	3,000 pages	
Multi-Feed Detection	Ultrasonic sensor	
Interface	Colour (24-bit)	Line Speed
Standard	USB 2.0 Hi-Speed	40/80
Network	Ethernet (with optional network interface panel)	40/80
Supported Platforms	Grey (8-bit)	Line Speed
Operating System	Microsoft® Windows XP (Home/Professional/Professional x64) / Vista (32-bit/64-bit) / 7 (32-bit/64-bit)	8/13
	Mac OS X 10.4.11 or later	8/16
Electrical Specifications	Mono (1-bit)	Line Speed
Rated Voltage	AC 100-240V	4,000 pages
Rated Frequency	50-60 Hz	
Power Consumption	Colour (24-bit)	Line Speed
Operating	Approx. 44.5W	
Standby	Approx. 12.0W	
Sleep	Approx. 1.6W	
Power Off	Approx. 0.4W	
Options	Grey (8-bit)	Line Speed
Roller Assembly Kit	Order Code	
Network Interface Panel (2.2" LCD panel)	B12B813481	
	B12B808411	

Dimensions & weight

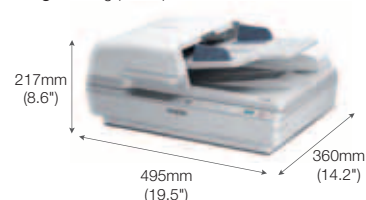
DS-6500

Weight: 9.8kg (21.6lb)



DS-7500

Weight: 9.8kg (21.6lb)



^{*1} Scanning resolution as defined by ISO14473.

^{*2} Scanning Speed Data Patterns
The thumbnail image below shows the scanning pattern used to determine scanning specifications.



Line Art (MEMO)

© 2012 Epson India Pvt. Ltd. All Rights Reserved.
Reproduction in part or in whole, without the written permission from Epson, is strictly prohibited. EPSON and EXCEED YOUR VISION are registered trademarks of Seiko Epson Corporation. All other products names and other company names used herein are for identification purposes only and are the trademarks or registered trademarks of their respective owners. Epson disclaims any and all rights in those marks. Print samples shown are simulations only. Specifications and product availability are subject to change without notice and may vary between countries. Please check with local Epson offices for more information.

Information correct at time of printing.
January 2018

EPSON INDIA PVT. LTD.

12th Floor, The Millenia, Tower A, No.1, Murphy Road, Ulsoor, Bangalore - 560 008.
Tel: 080-30515000 Fax: 080-30515005

Regional Offices:

Ahmedabad - 26407176/77, Chennai - 30277500/11, Cochin - 4012315, Coimbatore - 4393379,
Kolkata - 65009370/77, Mumbai - 28261515-17, New Delhi - 46585444, Pune - 30286000, Secunderabad - 40359898



Epson Helpline: (9AM - 6PM) (Mon - Sat)
For product info or service - 1800 425 0011
For service - 1860 3000 1600

www.epson.co.in

Dealer's Stamp

