

THE CAPACITY YOU NEED FOR THE FASTEST AND BIGGEST JOBS.

WORLD'S
1st
Original Ink Tank
Large Format Printer



The Epson SureColor SC-B6070 and SC-B7070 are the world's first original ink tank large format printers. Designed for fast, reliable and high quality printing with very low total cost of ownership, they are perfect for the demands of short term, high volume, large format commercial applications, including banners, posters, POP materials, backlit panels and more.

- Up to 64" Wide
- High Capacity Inks
- Epson Genuine Inks
- 1.5L Ink Tanks
- Cost Effective
- 1 Year Warranty



SC-B6070
Up to 44" Wide



SC-B7070
Up to 64" Wide



High capacity 1L original ink packs.

4 COLOURS 4 INKS MAX. ■ ■ ■ ■	MAXIMUM MEDIA WIDTH	MAX. INK CAPACITY PER COLOUR	RIP INCLUDED	PRINT SPEEDS ²	SQ FT/HR
	64" & 44"	1.5L		HIGH SPEED	328
				PRODUCTION	242
				HIGH QUALITY	75

ENGINEERED FOR BUSINESS

Genuine Ink Tank System

1.5L integrated ink tanks reduce frequency of refills. Genuine Epson ink refills deliver high quality, high volume performance.

Superb Productivity

Designed with ink level warning system, ink filters and highly durable Micro Piezo™ print heads to ensure smooth and reliable continuous operation.

1-Year Warranty for Peace-of-Mind

Enjoy peace-of-mind with Epson's professional service and 1-year warranty inclusive of parts and print head.

The Epson SureColor SC-B6070 and SC-B7070 combine the superbly reliable Micro Piezo print heads with an original high capacity ink tank system to deliver fast, cost effective and high quality large format printing.



Genuine Ink Tank System

Commercial large format printing places great demands on speed and turn around time. The SureColor B-series are the first in their class to integrate large, 1.5L capacity ink tanks for increased productivity and efficiency, reducing the frequency of ink refills while at the same time enabling fast, high-volume printing. Refills, when needed, come in convenient and value-for-money 1L packs containing genuine Epson ink for the best quality.



Superb Productivity

Created as a highly reliable solution for continuous production and minimum down time, the printers come with a remaining ink level warning system to alert users to replenish the ink tanks while in operation before they are empty.

Epson's proven and robust Micro Piezo print heads provide the required durability for high volume production while filters in the ink tanks ensure that the ink supply is kept free of impurities that may cause clogging and stoppages.

1-Year Warranty for Peace-of-Mind

Rest assured with a genuine 1-year warranty from Epson that includes parts and print heads, in addition to the support of professional Epson servicing to keep your printers operating at their peak.

Fastest in its Class



Push your printing productivity to the maximum with an unrivalled throughput of 30.6m²/h for the SC-B6070 and 28.6m²/h for the SC-B7070*.

*720 x 720dpi 2 passes

Quality You Know and Trust

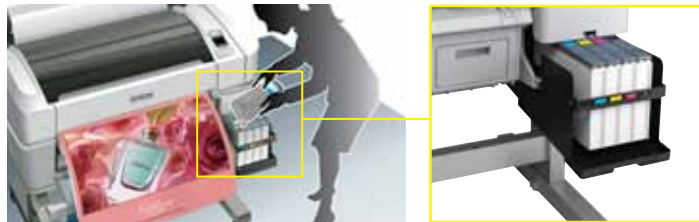
Epson's Micro Piezo Thin Film Piezo (TFP) print heads achieve extreme precision in ink droplet placement while increasing the nozzle count from 360 to 720 per colour. A single print head utilises 8 nozzle lines, delivering 720 dpi resolution in a single pass, unlike conventional models that can only manage 360 dpi, allowing fast printing speeds even at the highest quality setting of 1440 x 1440 dpi resolution.

Designed for Ease-of-Use

The SureColor B-Series is built with a sturdy, ergonomic design with smart features that make it a breeze to operate and maintain in busy work environments.

Easy Ink Replacement

Ultra high capacity 1L ink packs eliminate the need for frequent ink cartridge replacements. The ink tank system is fully integrated into the printer design and is easy to refill.



New Refillable Ink Tanks
Up to 1.5L per Colour

On-the-Fly Paper Feed Adjustment

A short-cut button on the control panel lets users correct the paper feed even while printing is in progress, thereby reducing print wastage.

Easy-to-Use Interface



The new 2.5" colour LCD screen control panel lets users use shortcut keys to check and use printer settings intuitively. The large LED alert lamp notifies users of any printing errors. The paper feed button allows users to adjust the paper feed without stopping any print jobs, ensuring minimal print wastage.

Alert Lamp & Buzzer

In the event of printer error, users are quickly alerted.

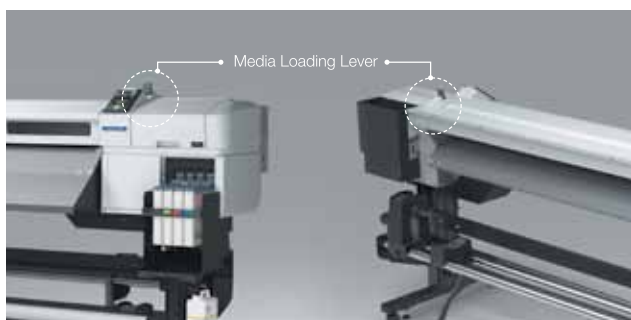


Easy Roll Media Loading

Thanks to a jack at the rear, loading a new roll is a one-person job. Media tensioning can be controlled easily from front or back of the printer for speedier set-up to maximise productivity. 'Auto Tension Control' and three platen gap settings ensure accurate and efficient media feeding for reliable and continuous printing.

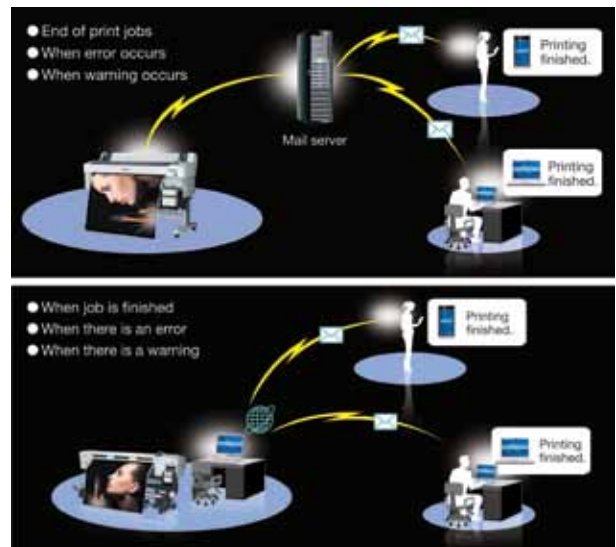


The lever on the SC-B7070 is positioned to allow users to control media loading from both the front or back of the printer for greater convenience.



Status Notification System

Status alerts for instances such as 'End of Print Job', 'Error' or 'Ink Running Out' can be sent to users via e-mail notification, receivable through networked PCs or modern smartphones.



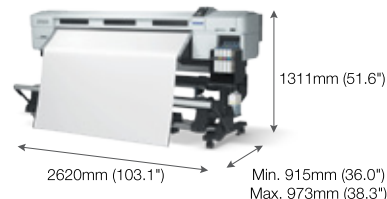
MODEL NUMBER	SC-B6070	SC-B7070
Printing Technology		
Printing Method	Micro Piezo TFP® Print Head with Variable-Sized Droplet Technology	
Nozzle Configuration	360 x 2 nozzles each colour (x4)	
Print Direction	Bi-directional printing, uni-directional printing	
Maximum Resolution	720 dpi x 1440 dpi	
Minimum Ink Droplet Volume	3.8pl	5.2pl
Print Modes	Resolution	Passes
High Speed	360 x 720 dpi	2
Production 1	720 x 720 dpi	3
Production 2	720 x 1440 dpi	4
High Quality	720 x 1440 dpi	7/8
	m²/h	m²/h
	30.6	28.6
	22.6	18.4
	15.8	13.9
	6.2	7.0
	*All speeds depend on RIP.	
Ink System		
Colours	Cyan, Magenta, Yellow, Black	
Ink Tank Capacity	1,500ml	
Ink Pack Capacity	1,000ml	
Paper Handling		
Paper Feed Method	Friction Feed	
Auto Take Up Reel Unit	Optional	
Roll Outer Diameter	Up to 150mm	Up to 250mm
Roll Core Size	2" or 3"	
Media Width	254 – 1118mm (44")	300 – 1625.6mm (64")
Print Width (Margin)	Max. 1112mm Side Margin: 3mm Both Sides	Max. 1615.6mm Side Margin: 5mm Both Sides (10mm when using Media Holding Plates)
Media Thickness	0.08 – 0.50mm	Up to 1mm (Plain paper is not recommended)
Control Panel		
Number of Dots	2.5" Colour LCD 480(W) x 240(H) dot	
Connectivity		
Standard	USB 2.0 Hi-Speed	
Ethernet	100BASE-TX / 1000BASE-T	
Memory		
Main	512MB	
Network	128MB	
Control Code		
	ESC / P raster	
Electrical Specifications		
Rated Voltage	AC 100 – 240V (AC 90 – 264V)	
Rated Frequency	50 – 60Hz	
Power Supply	50 – 60Hz 1.0 – 0.5A	
Power Consumption		
Operating	Approx. 65W	
Standby	Approx. 20W	
Sleep	Approx. 3W (Interface is 1000BASE-T)	Approx. 9W
Power Off	Less than 0.4W	Less than 0.5W
Acoustic Noise Level		
Sound Pressure Level <dB(A)>	Approx. 55.1dB	Approx. 59dB
Sound Power Level <B(A)>	Approx. 7.3dB	Approx. 7.4dB
Printer Software on CD-ROM	Communication Driver (Win), User's Guide, EPSON LFP Remote Panel 2 (Win), EpsonNet Setup, EpsonNet Config, EpsonNet Print	
Options		
Auto Take Up Reel	C12C815411	C12C815391
Roll Media Adaptor	C12C811381	N.A.
Heavy Roll Media System	N.A.	C12C890761
Consumables		
Maintenance Box	C13T619300	N.A.
Auto Cutter Spare Blade	C13S902006	N.A.
Media Holding Plate	N.A.	C12C890891
Waste Ink Bottle	N.A.	C13T724000
Maintenance Kit	N.A.	C13T724200

Dimensions & Weight

SC-B6070
Weight: 90kg (198.4lb) (without ink)



SC-B7070
Weight: 204kg (449.7lb) (without ink)



Ink Pack Compatibility (1L refill packs)

SureColor SC-B6070

- Black C13T738100
- Cyan C13T738200
- Magenta C13T738300
- Yellow C13T738400

SureColor SC-B7070

- Black C13T771100
- Cyan C13T771200
- Magenta C13T771300
- Yellow C13T771400

© 2017 Epson India Pvt. Ltd. All Rights Reserved.
Reproduction in part or in whole, without the written permission from Epson, is strictly prohibited. EPSON and EXCEED YOUR VISION are registered trademarks of Seiko Epson Corporation. All other products names and other company names used herein are for identification purposes only and are the trademarks or registered trademarks of their respective owners. Epson disclaims any and all rights in those marks. Print samples shown are simulations only. Specifications and product availability are subject to change without notice and may vary between countries. Please check with local Epson offices for more information.

Information correct at time of printing.
Printed in April 2018

CONTACT EPSON TODAY! EMAIL: vasu@eid.epson.co.in

SOUTH Alok Singh 098405 03210, Harishankar 098802 85075 **NORTH** Akhtar Imam 099101 08780, Ashutosh Kumar 098153 94550, Sudhir Kumar 093898 35156 **EAST** Sourov Kumar 098746 72616 **WEST** Milind 098209 74733, Devendra 098509 49453.

EPSON INDIA PVT. LTD.

12th Floor, The Millenia, Tower A, No.1, Murphy Road, Ulsoor, Bangalore - 560 008. Tel: 080-30515000 Fax: 080-30515005



Epson Helpline: For product info or service - 1800 425 0011
For service - 1860 3000 1600 (9AM - 6PM) (Mon - Sat)
Email: lfp@epsonindia.in

www.epson.co.in

