



Epson SureColor® P800

Professional 17-Inch Photographic Printer

Product Presentation



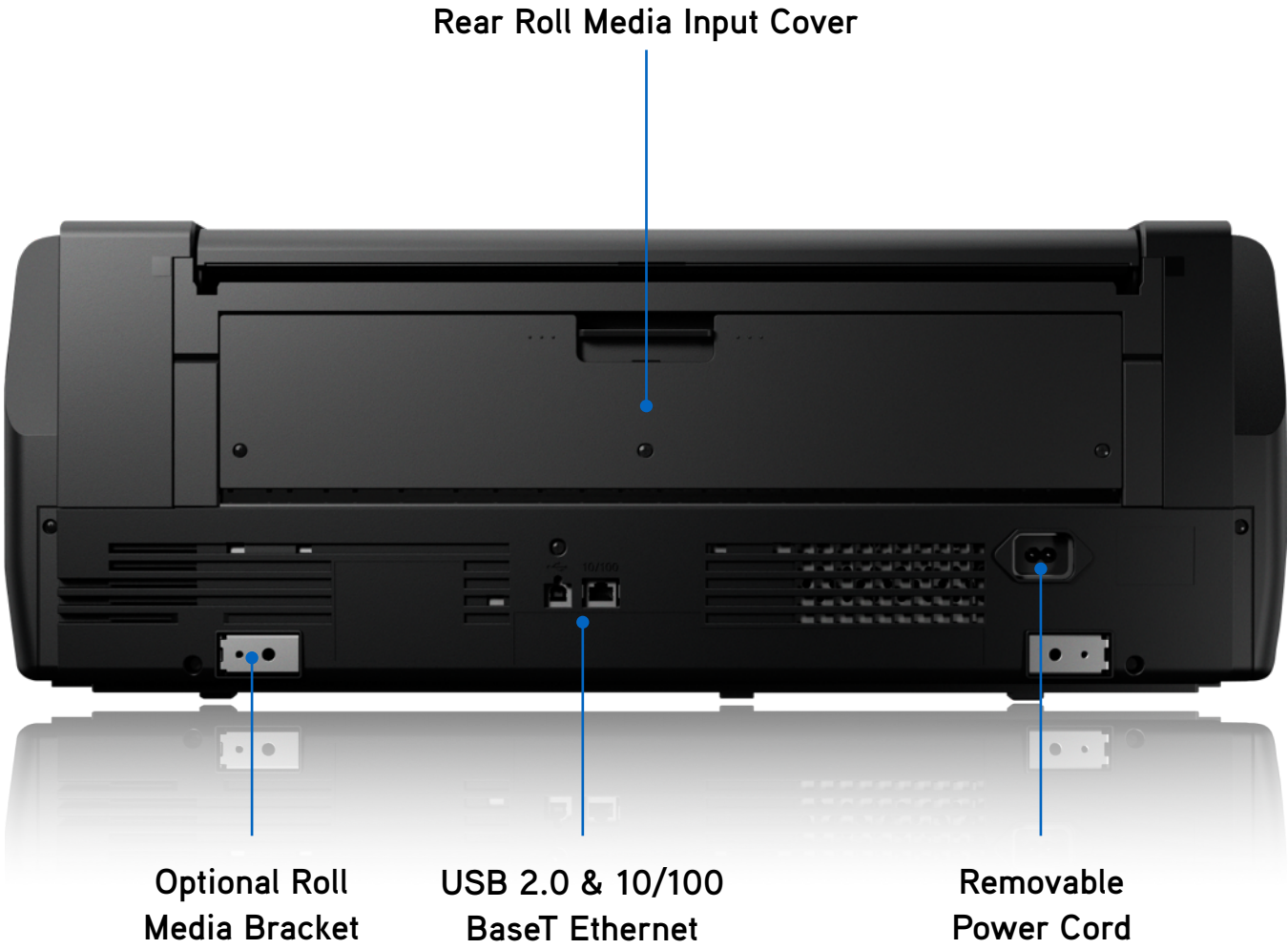
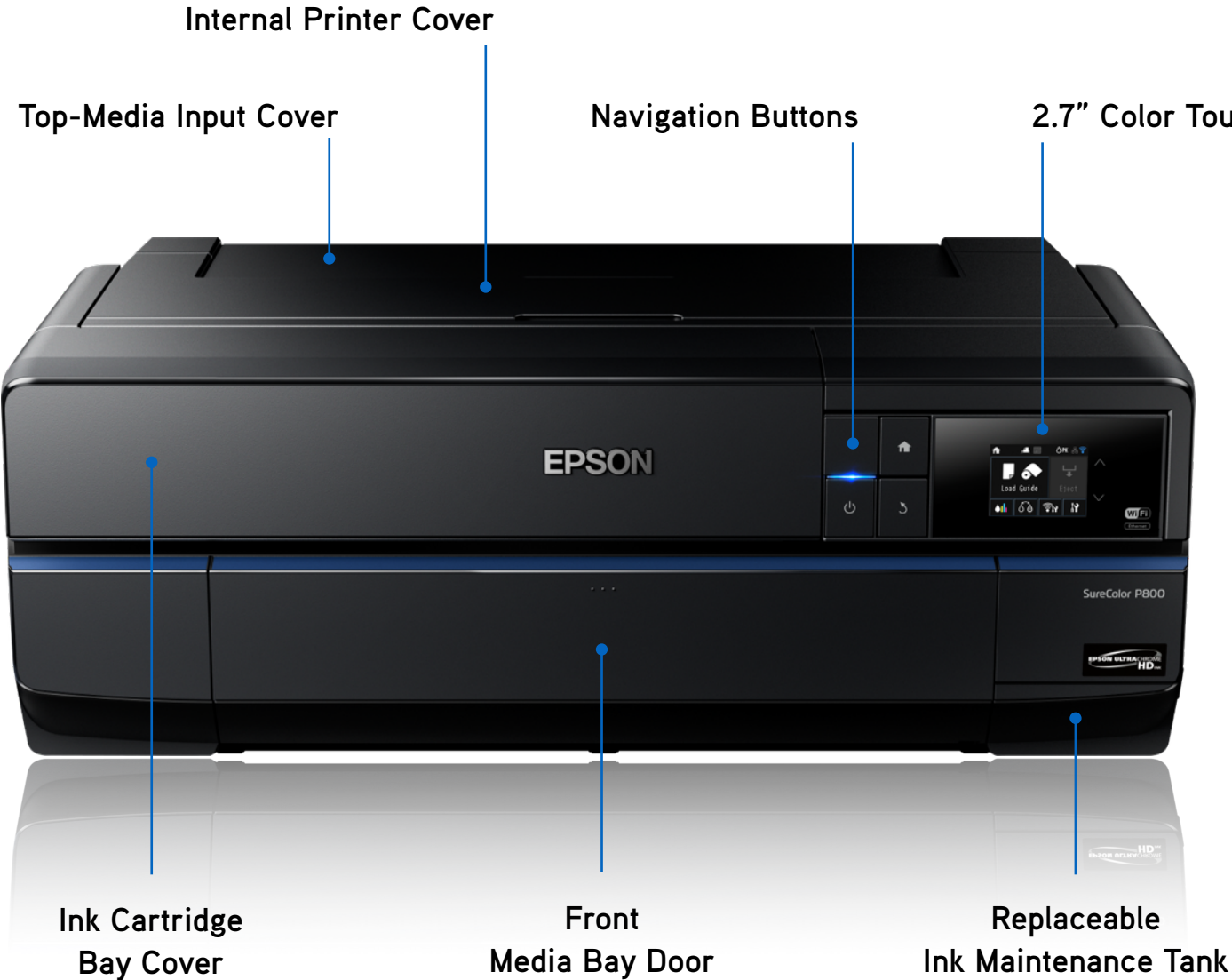
Inspire Us.

As an artist, you have the unique ability to inspire change. You have the responsibility to remind us of our past, while making us excited for our future.

At Epson, we understand the importance of what you do.

That is why we strive to develop imaging technology that never highlights itself within your work. It's why we insist your work remain as beautiful as the day it was printed. And, it's the reason we push the limits of imaging technology to ensure your work is never limited by the technology used to print it.

Introducing the Epson SureColor P800 Printer.





**Nine 80 ml High-Capacity
Ink Cartridges**

(nine 64 ml starter cartridges
comes with the printer)



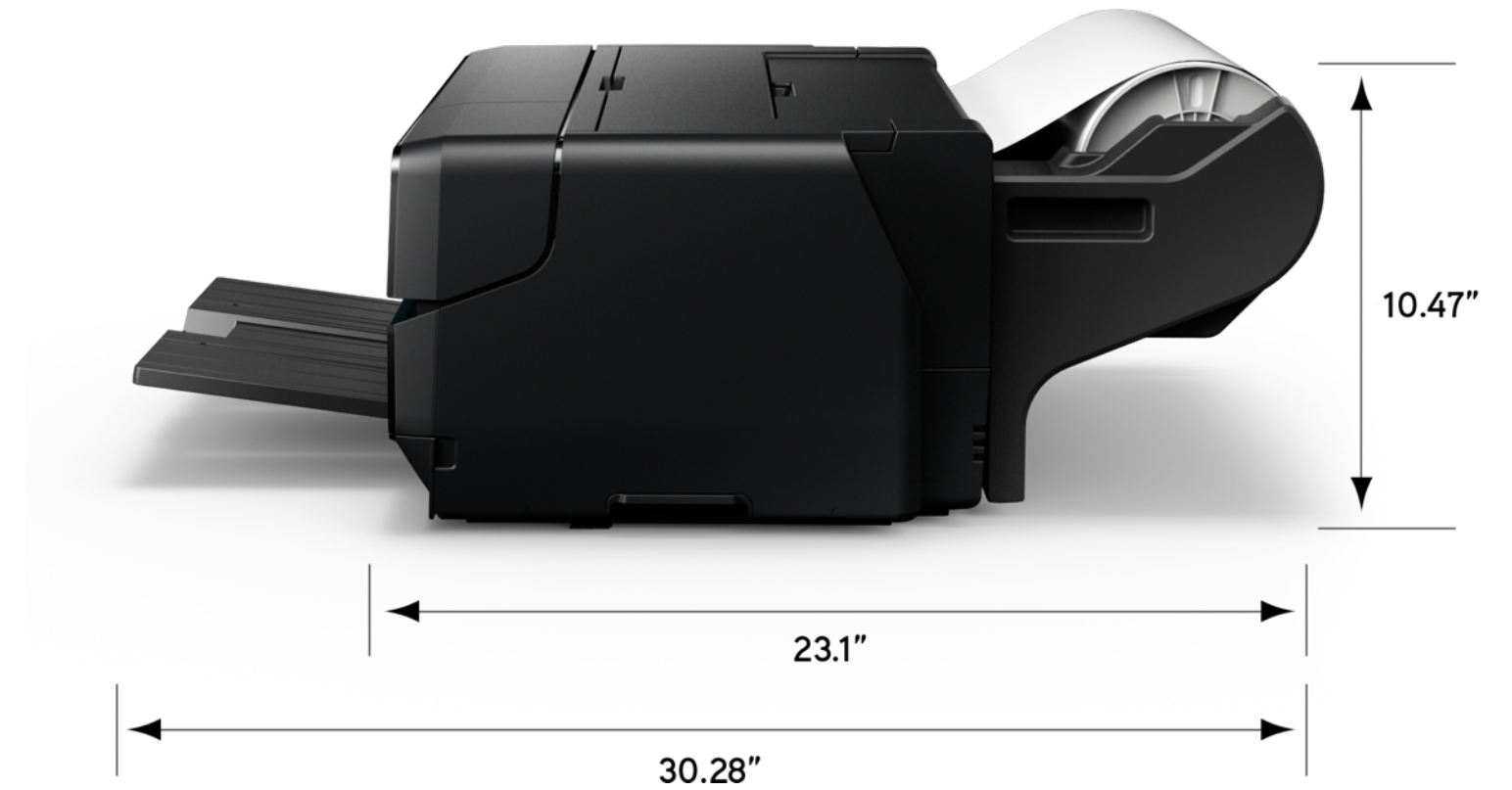
**Optional 17-Inch Roll Media Adapter
2-Inch & 3-Inch Core Support**



Top Media Input
Up to 17-inch width for standard design and photographic media

Front Fine Art Media Input
Up to 17-inch width for fine art and poster board up to 1.5 mm thick

Media Exit Tray



Printer Weight is 43 lb. | With Roll Option 49 lb.



■ **Top-Loading Multi-Sheet Media Input**

- Supports most photographic and design media types up to 17-inch wide
- Maximum sheet capacity of 100

■ **Single-Sheet Front Fine Art and Poster Board Media Input**

- Specialized feeder optimized for fine art and poster board media up to 1.5 mm thick

■ **Border Free Printing for Many Popular Print Sizes**

- 4" x 6", 5" x 7", 8" x 10", 11" x 14", 16" x 20", 17" x 22", and many more

■ **Optional Rear 17-Inch Roll Media Input**

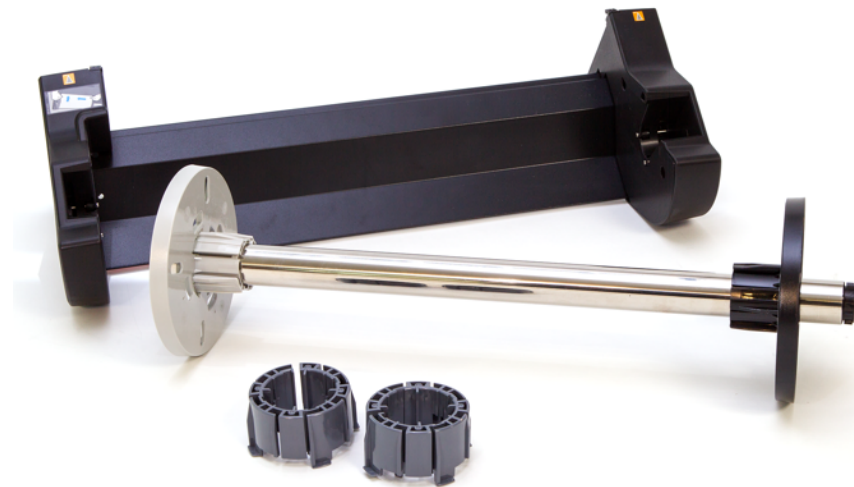
- Ideal for printing on roll-based photographic and fine art media types
- Supports both 2-inch and 3-inch cores
- No built-in cutter - manual cutting is required

■ Professional Roll Media Support up to 17-Inch Wide

- Robust roll media feeding system designed for easy install
- Supports both 2-inch and 3-inch cored roll media
- No built-in cutter – manual cutting required
- Ideal for panoramic printing up to 10 feet long

■ Supports All Professional Roll Media Types

- Photographic
- Graphic Arts
- Commercial Proofing
- Fine Art Canvas
- Fine Art Papers



Optional 17-Inch Roll Media Adapter

\$199.95 MSRP

■ Next-Generation 8-Color Pigment Ink Technology

- All new pigments for outstanding color performance
- Improved Resin Encapsulation Technology for superior gloss uniformity

■ Improved Black Density

- Black pigments are 1.5 times denser than previous generation ink set
- Significant improvement to overall contrast ratio and optical clarity

■ Significant Print Permanence Improvements

- Newest generation of yellow pigment technology for improved print permanence
- Up to twice the overall print permanence versus our previous generation ink set
- Print permanence ratings are available from Wilhelm Imaging Research, Inc.
- Visit www.wilhelm-research.com for the latest details

professional
ink technology



	Total Color Volume (Gamut - Higher is Better)	L* Value (Black Density - Lower is Better)
Ultra Premium Photo Paper Luster - PK	731,428	4
Exhibition Fiber Paper - PK	744,753	2
Premium Photo Paper Glossy - PK	731,428	4
Premium Photo Paper Semigloss - PK	731,428	4
Metallic Photo Paper Luster - PK	628,180	3
Metallic Photo Paper Glossy - PK	628,180	3
Exhibition Canvas Natural Gloss - PK	715,124	3
Exhibition Canvas Natural Satin - PK	467,229	19

Data captured from actual shipping ICC profiles using CHROMiX ColorThink Pro. PK = Photo Black Ink Mode. MK = Matte Black Ink Mode.

Data is for reference purposes only. For people who really love the tech stuff.

	Total Color Volume (Gamut - Higher is Better)	L* Value (Black Density - Lower is Better)
Hot Press Natural - MK	518,666	15
Hot Press Bright - MK	518,666	15
Velvet Fine Art Paper - MK	498,754	14
UltraSmooth Fine Art Paper - MK	494,746	15
Cold Press Bright - MK	485,617	15
Cold Press Natural - MK	485,617	15
Exhibition Watercolor Textured - MK	474,746	14
Enhanced Matte Paper - MK	498,754	14

Data captured from actual shipping ICC profiles using CHROMiX ColorThink Pro. PK = Photo Black Ink Mode. MK = Matte Black Ink Mode.

Data is for reference purposes only. For people who really love the tech stuff.

photographic
printhead
technology



■ Unique Photographic Print Head Technology

- Piezo-based print head incorporating 8-channels – each with 180 nozzles per inch
- Advanced Meniscus Control (AMC) for accurate variable dot shaping
- Ink repellant surface coating for reduced nozzle clogging

■ High Resolution Printing

- Capable of printing up to 2,880 x 1,440 dpi
- Supports variable sized droplet technology as small as 3.5 picoliter

■ Auto Black Ink Type Switching

- Capable of automatic Photo to Matte Black ink switching
- Matte to Photo Black switching time is about 3:30 min:sec
- Photo to Matte Black switching time is about 2:30 min:sec

	Bordered Print 1440 x 720 dpi HS	Bordered Print 2880 x 1440 dpi HS	Borderless Print 1440 x 720 dpi HS	Borderless Print 2880 x 1440 dpi HS
4" x 6"	0:55	1:35	1:22	2:00
5" x 7"	1:08	1:58	1:27	2:28
8" x 10"	1:53	3:15	2:15	3:55
11" x 14"	3:09	5:30	3:40	6:39
13" x 19"	4:40	8:20	5:11	9:07
16" x 20"	5:48	10:08	N.A.	N.A.
17" x 22"	6:19	11:08	7:00	12:26
17" x 120" Roll Panorama	31:56	57:22	32:34	57:52

Print times are based upon start of paper movement from the sheet feeder through paper ejected into output tray unless specified as roll. Actual print times may vary.

Test Images printed on Epson Ultra Premium Photo Paper Luster using a standard ICC color managed workflow via Adobe® Photoshop®

HS = High-Speed Mode (Bi-Directional Print Mode)

Print speeds are shown in min:sec

■ Standard USB 2.0 and 10/100 BaseT Ethernet

- The perfect choice for single or multiple user environments

■ Standard Wireless-N

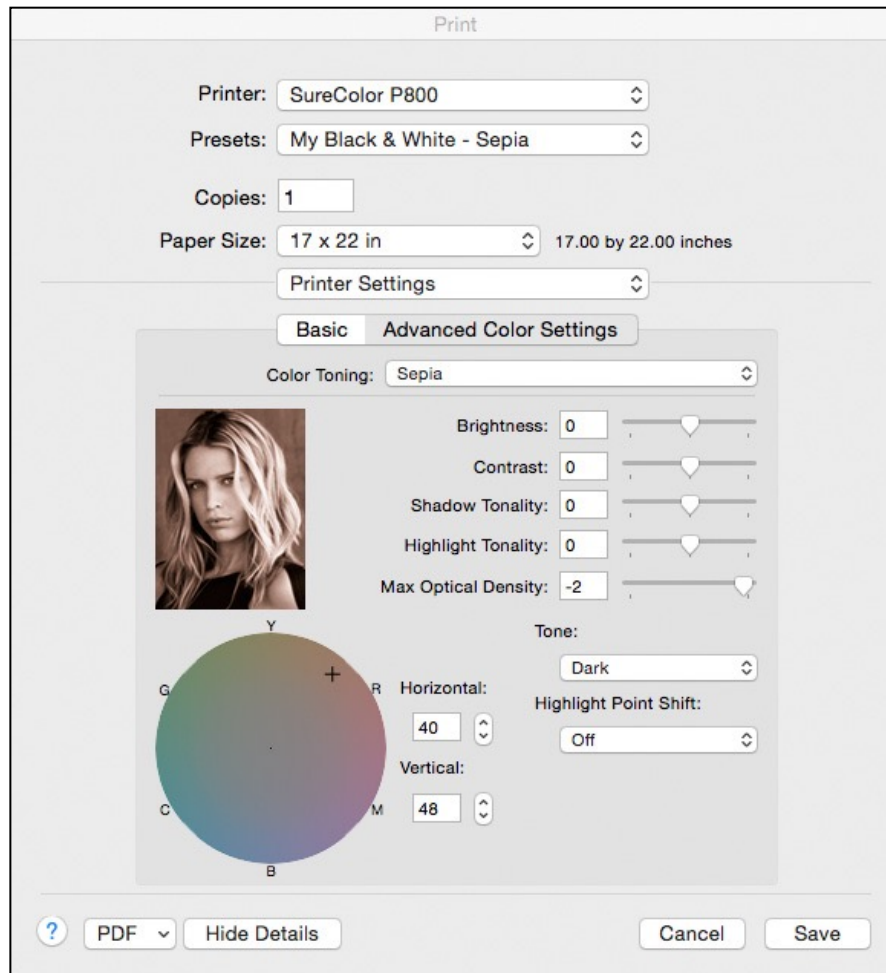
- Allows for flexible printer placement when a direct connection is not available
- Not intended for use with wireless-a or wireless-g devices

■ Support for Direct Printing from Smart Phones and Tablets

- Apple® AirPrint™
- Google® Cloud Print™
- Epson iPrint App - Available for Apple iOS and Android operating systems



Robust Connectivity Solutions



Advanced Black & White Driver Dialog
Complete Control of Grayscale Toning

Apple Macintosh OS 10.10.4 Shown

■ Professional Photographic Drivers

- True 16-bit compatible drivers
- Apple® Macintosh® OS 10.5 or higher
- Microsoft® Windows® 7, 8 and 10 (32-bit & 64-bit)

■ Unique EPSON PrecisionDot™ Screening

- Advanced form of math to determine dot size and placement
- Fixed and variable-sized droplet technology for outstanding print quality
- Accurate blends and tonal transitions

■ Advanced Black & White Printing Technology

- Unique screening algorithm for producing professional black & white prints
- Utilizes our three-level black system to optimize black & white print quality
- Some of the world's greatest black and white prints have been produced using this driver technology

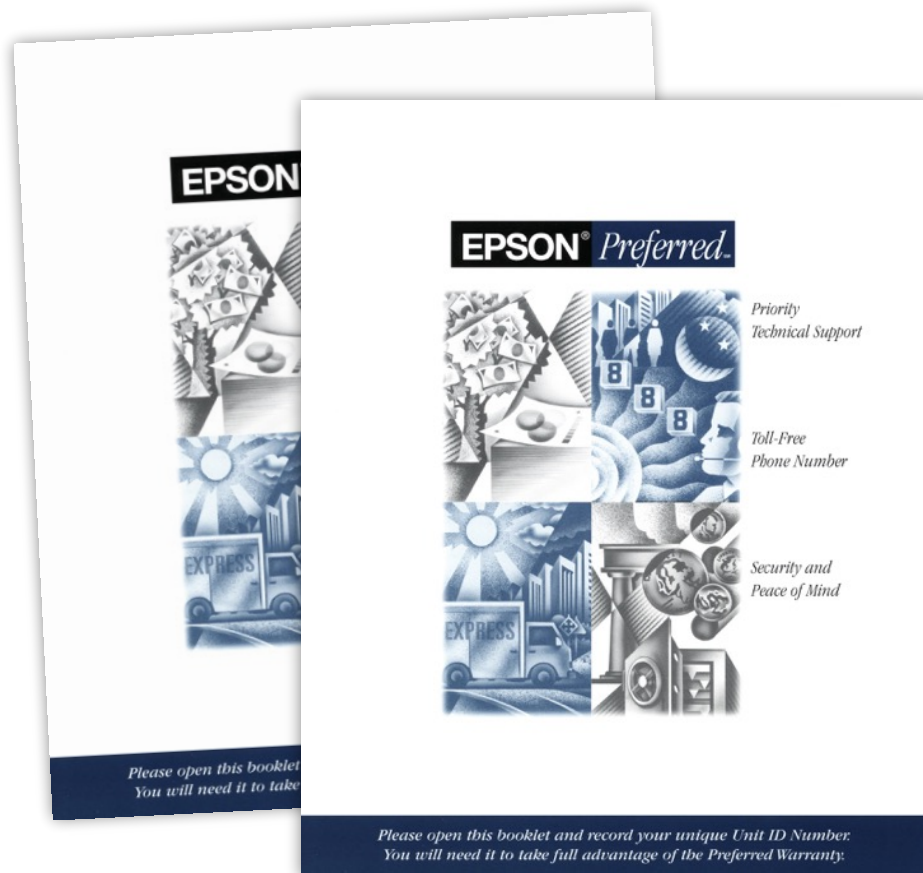
■ Standard 1-Year Epson PreferredSM Limited Warranty

- Free technical support Monday thru Friday
- If required, free full unit replacement - includes free shipping
- Covers the printer, genuine Epson optional accessories, and software

■ Optional 1- or 2-Year Epson Preferred Plus Premium Service and Support Plans

- Extends same Epson coverage when the standard limited in-box warranty ends
- Can be purchased at any time while still under an Epson Preferred Limited Warranty
- Provides up to 3-years of complete coverage from Epson

Limitations apply. See service program for details.





Epson SureColor P800

The Perfect Desktop Photographic Printer.

■ **Class-Leading Print Quality**

- The benchmark standard for photographic imaging excellence

■ **Superior Print Permanence**

- Epson UltraChrome HD ink technology dramatically improves print life

■ **Media Flexibility**

- Compatible with multiple media types and formats - up to 17-inch wide

■ **Printer Versatility**

- Compact desktop design with robust connectivity options

■ **Industry Support**

- Significant third-party training, forums, software, and after-market product support

	Part Number	MSRP
Epson SureColor P800 Printer	SCP800SE	\$1,295.00
Optional 17-Inch Roll Media Adapter	C12C811431	\$199.95
Replacement Ink Maintenance Tank	T582000	\$20.00
Optional 1-Year Epson Preferred Plus Service Extension	EPP38B1	\$179.00
Optional 2-Year Epson Preferred Plus Service Extension	EPP38B2	\$319.00
UltraChrome HD 80 ml Ink Cartridge - Photo Black	T850100	\$59.95
UltraChrome HD 80 ml Ink Cartridge - Cyan	T850200	\$59.95
UltraChrome HD 80 ml Ink Cartridge - Magenta	T850300	\$59.95
UltraChrome HD 80 ml Ink Cartridge - Yellow	T850400	\$59.95
UltraChrome HD 80 ml Ink Cartridge - Light Cyan	T850500	\$59.95
UltraChrome HD 80 ml Ink Cartridge - Light Magenta	T850600	\$59.95
UltraChrome HD 80 ml Ink Cartridge - Light Black	T850700	\$59.95
UltraChrome HD 80 ml Ink Cartridge - Matte Black	T850800	\$59.95
UltraChrome HD 80 ml Ink Cartridge - Light Light Black	T850900	\$59.95

For the latest street pricing, contact your local Authorized Epson Reseller.



Specifications are Subject to Change Without Notice

AMC, Epson, Epson iPrint, Epson Stylus, UltraChrome, and SureColor are trademarks or registered trademarks,

Epson Preferred is a service mark, and EPSON Exceed Your Vision is a registered logo mark of Seiko Epson Corp.

Adobe and Photoshop are either registered trademarks or trademarks of Adobe Systems Incorporated in the United States and/or other countries.

Apple, iOS, and Apple AirPrint are either registered trademarks or trademarks of Apple in the United States and/or other countries.

Google and Google Cloud Print are either registered trademarks or trademarks of Google Inc., in the United States and/or other countries.

All other product brand names are trademarks and/or registered trademarks of their respective companies.

Epson disclaims any and all rights to these trademarks.

© Epson America, Inc. 2015 MR JULY 2015

www.proimaging.epson.com

EPSON®