

A new

CORE

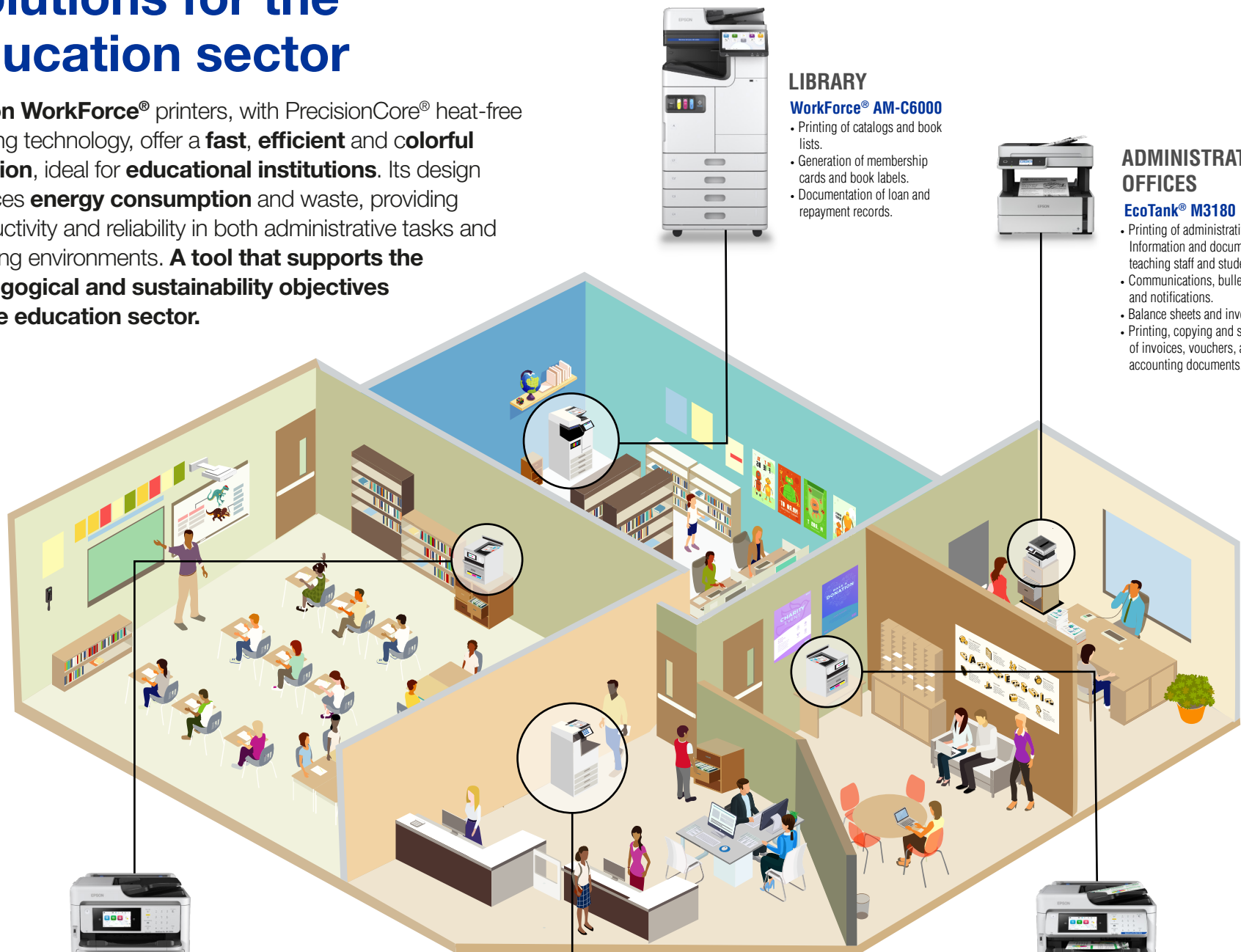
for your business



Epson WorkForce®
Business Printing Solutions with
PRECISIONCORE® Technology

Solutions for the education sector

Epson WorkForce® printers, with PrecisionCore® heat-free printing technology, offer a **fast, efficient** and **colorful solution**, ideal for **educational institutions**. Its design reduces **energy consumption** and waste, providing productivity and reliability in both administrative tasks and learning environments. **A tool that supports the pedagogical and sustainability objectives of the education sector.**



LIBRARY

WorkForce® AM-C6000

- Printing of catalogs and book lists.
- Generation of membership cards and book labels.
- Documentation of loan and repayment records.

ADMINISTRATIVE OFFICES

EcoTank® M3180

- Printing of administrative forms. Information and documents for teaching staff and students.
- Communications, bulletins, and notifications.
- Balance sheets and inventories.
- Printing, copying and scanning of invoices, vouchers, and accounting documents.

CLASSROOMS

WorkForce® WF-C5890

- Printing of teaching materials and visual resources.
- Generation of worksheets and activities.
- Creation of student projects and presentations.

COPY CENTER

WorkForce® WF-M21000

- Printing and copying of reading materials and study guides.
- Generation of exams and worksheets.

TEACHERS' ROOM

WorkForce® Pro EM-C800

- Printing of study guides and activities.
- Printing of exams, tests, class schedules, and activities.
- Creation of internal communication (posters, announcements, reminders).
- Printing of communications for parents and guardians.