



If you want superb scans from your photos or films, look no further than Epson Perfection V850 Pro. Boasting up to 6400 dpi with Optical Density of 4.0 Dmax for film scanning and enhanced by an energy-efficient ReadyScan LED technology, you can expect images refined in brilliant resolutions, with zero warm-up time. Two sets of film holders with adjustable height are included to provide greater versatility in film scanning.



Scan
6400 dpi*



4.0 Dmax



Film
Scanning



Scan up
to A4



LED



Environmentally
Friendly

IT'S IN THE DETAILS.

Proven Dual Lens System

Quality scans of up to 4800 dpi for reflective scanning and 6400 dpi with Optical Density of 4.0 Dmax for film scanning with film holders.

Versatile Film Support

Two sets of film holders of each type with Anti-Newton Ring glass and adjustable height are provided.

Zero Warm-up Time

Reduce waiting time and energy consumption with ReadyScan LED.



Discover quality and versatility with excellent scans of up to 6400 dpi with Optical Density of 4.0 Dmax for film scanning. The V850 comes equipped with four height-adjustable film holders to support a variety of film formats, and also features zero warm-up time, enabled by its ReadyScan LED light source.



Proven Dual Lens System

Bring out exquisite quality from your photo or film with the Dual Lens System, capable of resolutions up to 6400 dpi* with an Optical Density of 4.0 Dmax for film scanning and 4800 dpi for reflective scanning. Combined with Epson Matrix CCD™, you can enjoy brilliant details from your scans, making it perfect for your work or hobby.



Versatile Film Support

Two sets of film holders for 35mm strip film or mounted film, 6 x 20cm medium format film, 4" x 5" large format film and one film area guide for scanning up to 8" x 10" transparency, experience versatility and ease in your scans.

The film holders are equipped with Anti-Newton Ring glass** to maintain film flatness and have up to 5 height adjustment levels to achieve the sharpest scans.



35mm
Strip

35mm
Mounted

6 x 20cm
Medium
Format

4" x 5"
Large
Format

Film Area
Guide

*Film scanning with film holder only.

**Except for the 35mm mounted film holder.

Zero Warm-up Time

The V850 is equipped with energy-saving and eco-friendly ReadyScan LED light sources that require zero warm-up time, providing hyper-responsive scanning. The V850 has a power-saving sleep mode that reduces energy consumption even further.

Designed for Greater Productivity

Push the limits of your editing potential with a software bundle of scanning and imaging tools that let you create the images you want.

Epson Copy Utility

Copy photos and documents easily without a copy machine or an all-in-one printer. Epson Copy Utility easily combines your Epson Scanner and Printer into a copy machine.

Epson Event Manager

Make regular scan jobs easier by creating ten customisable jobs. Users can also assign a job to the scanner button for one touch scanning.

LaserSoft SilverFast SE Plus

Simplify scanning workflow with advanced features to optimise image quality.

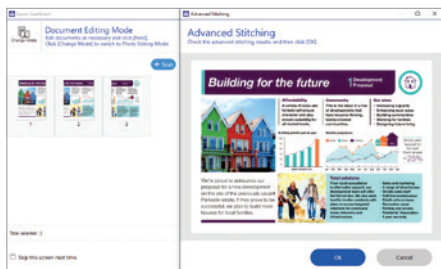


i1 Scanner (with IT8 target)

Create input colour profiles for the scanner using IT-8 calibration target to achieve better colour accuracy for your scanned images.

Epson ScanSmart

Large originals can be scanned and stitched into a single image with Epson ScanSmart. This software can also perform simple adjustments to rearrange and rotate documents, perform automatic enhancements to photos, and save your files into a variety of formats with the capability to create Searchable PDF.



Epson Scan

The Epson Scan driver provides a user-friendly software interface that caters to your every need. A fully automatic scanning function gets new users off and running and professionals will enjoy the suite of advanced tools to get the best scan results.

Colour Restoration

Restore the original colours of faded photos to make them look as good as new again.



Backlight Correction

Reduce interference from background light by correcting shadows, creating a clearer and sharper image.

DIGITAL ICE™

This image restoration solution uses a unique combination of hardware and software to correct image defects.

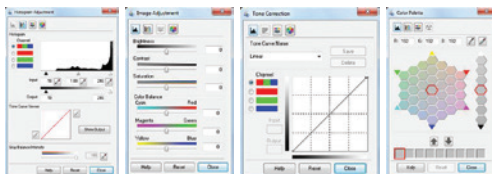
DIGITAL ICE for Film: the scanner uses an infrared light source to detect dust and scratches on the surface of the film. In a multi-pass process, the dust and scratches are mapped out and carefully removed from the scanned image, leaving the composition and quality intact.

DIGITAL ICE for Prints: the scanner uses two lamps at different angles to detect tears, folds and creases on prints and corrects the scanned image accordingly.



Advanced Image Adjustment Tools

Tap upon a host of advanced tools to achieve the best results.

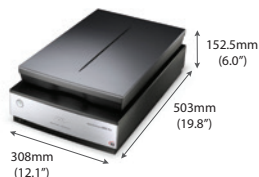


SPECIFICATIONS
PERFECTION™ V850 PRO

EPSON

MODEL NUMBER	V850
Basic	
Scanner T ype	Flatbed colour image scanner
Optical Resolution * 1	Main 6400 dpi x Sub 9600 dpi (Film Scanning with Film Holder) Main 4800 dpi x Sub 9600 dpi (Reflective and Contact Sheet Scanning)
Optical Density	4.0 Dmax
Document Size	
Reflective	Up to 216 x 297 mm
Transparency	Up to 203 x 254 mm
	35mm x 18 frames strip film
	35mm x 12 frames mounted film
	(6 x 20cm) x 1 frame Medium format
	(4" x 5") x 1 frame,
	Up to 8" x 10" (with film ar ea guide)
	USB 2.0
Interface	
Configuration	
Photoelectric Device	Epson Matrix CCD ™ (6 line colour CCD with On Chip Micro Lens) 40,800 x 56,160 pixels (4800 dpi) 37,760 x 62,336 pixels (6400 dpi)
	White LED
	Fixed document and moving carriage
Light Sour ce	
Sub-Scanning Method	
Performance	
Output Resolution * 2	25 to 12,800 dpi (in 1 dpi increments)
Pixel Depth	16 bits/pixel (Input 16 bits/pixel, Output 16 bits/pixel)
Scanning Speed	
Reflective Scanning (Speed Mode) * 3	DPI Speed
Preview	6 sec
Monochrome	300 12 sec
24-bit Colour	300 12 sec
Film Scanning (Quality Mode)	DPI Speed
35mm Positive Film	2400 37 sec
	4800 66 sec
	6400 85 sec
35mm Negative Film	2400 32 sec
	4800 58 sec
	6400 76 sec
Functions	
Driver and Bundled Software	Epson Scan Epson Event Manager (Win / Mac) Epson Copy Utility Epson ScanSmart SilverFast SE 8 Plus (Win / Mac) X-Rite i1 Scanner (with iT8 target) Microsoft Windows XP / Vista / 7 / 8 / 8.1 / 10 Mac OS X 10.6.8 or later
Supported Platforms	
Environmental Conditions	
Temperature	Operating 5 - 35°C Storage -25 - 60°C
Humidity	Operating 10 - 80% (No Condensation) Storage 10 - 85% (No Condensation)
Electrical Specifications	
Rated Voltage	AC 220-240 V
Rated Fr equency	50 - 60Hz
Power Consumption	Operating 23W Ready 12W Sleep 1.5W Power Of f 0.3W

Dimensions & Weight
V850
Weight: 6.6kg (14.6lb)



*1 Optical Resolution as defined by ISO 14473.

*2 With interpolation, scanning area may be restricted if resolution setting is large.

*3 Scanning Speed Data Patterns. The thumbnail images below show the scanning patterns used to determine scanning speed specifications.



Photo A4

Scanning speed test results vary according to system configuration, dpi setting, and scan mode setting. However, documents and photos other than those pictured above can be substituted without significantly affecting test results.

© 2023 Epson India Pvt. Ltd. All Rights Reserved. Reproduction in part or in whole, without the written permission from Epson, is strictly prohibited. EPSON and EXCEED YOUR VISION are registered trademarks of Seiko Epson Corporation. All other products names and other company names used herein are for identification purposes only and are the trademarks or registered trademarks of their respective owners. Epson disclaims any and all rights in those marks. Print samples shown are simulations only. Specifications and product availability are subject to change without notice and may vary between countries. Please check with local Epson offices for more information.

Information correct as at August 2023

EPSON INDIA PVT. LTD.

12th Floor, The Millenia, Tower A, No.1,
 Murphy Road, Ulsoor, Bangalore - 560 008.
 Tel: 080-4566 5000 | Fax: 080-4566 5005

Regional Offices:

Ahmedabad - 3314 8500/01, Chennai - 3967 7500, Ernakulam - 4012 315,
 Coimbatore - 98942 19200, Kolkata - 4603 4729, Mumbai - 3079 8200, New Delhi - 4107 3101,
 Pune - 3028 6000/05, Hyderabad - 4857 0032, Jaipur - 0141 4923119



Epson Helpline: For product info or service– 1800 425 0011

For service: 1800 123 001 600 or 1860 3000 1600 (9 am – 6 pm) (Mon – Sat)

Email: scanner@eid.epson.co.in