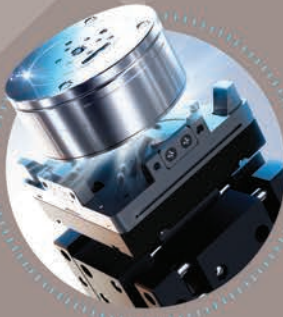


www.epson.co.id/industrial-robots

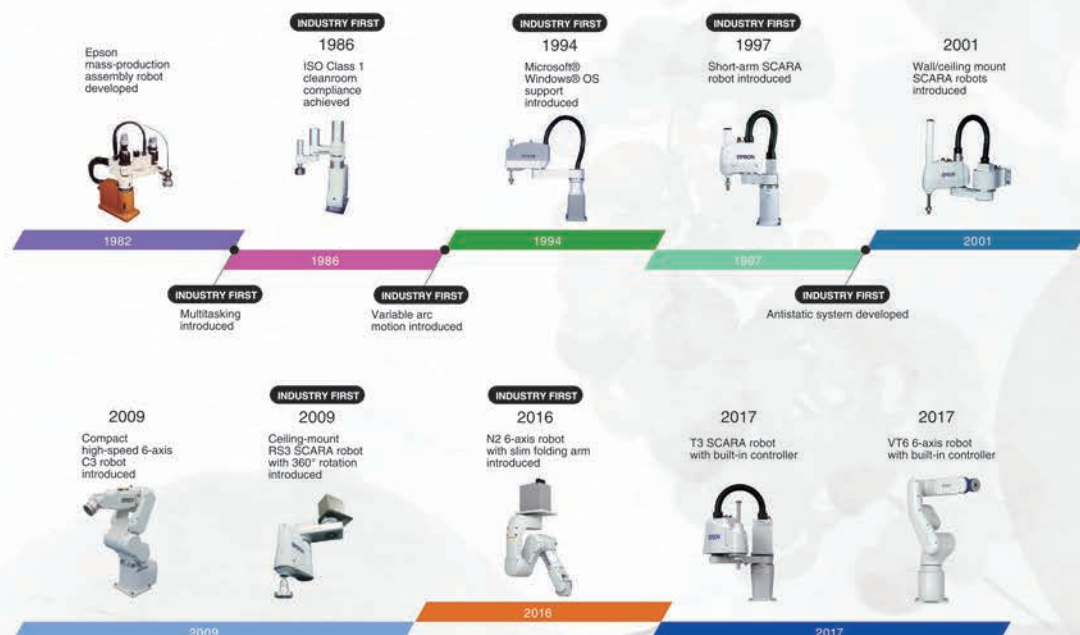
ROBOT SOLUTION



Epson Robot

A proven reputation for precision and reliability at the leading edge of industrial robot design

Ever since we developed our first SCARA robots for wristwatch assembly over 40 years ago, Epson has been a leader in advanced robotics technology. Today, our long experience in energy-efficient, compact, high-precision technologies enables us to offer a wide range of slim, compact, and lightweight robots. And with the addition of original Epson force sensing and image processing technologies, we are achieving even higher levels of reliability, speed, precision, and productivity in process automation. Whatever challenges you face, Epson industrial robots are continuously evolving to meet the diversifying needs of manufacturers worldwide.



Why Epson Robots ?

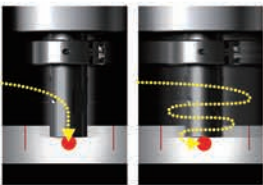
Epson, the global leader in robotics technology, offers you an impressive combination of high performance and operating ease. Backed by a worldwide reputation for reliability and outstanding customer support, Epson robots are bringing high-productivity automated manufacturing to an ever-expanding range of industries worldwide.



Low TCO and high reliability for the ultimate in automated productivity

High productivity

- Proprietary Epson technology reduces residual vibration to ensure high speed and precision for reduced takt time.
- Slim, lightweight body design reduces work cell space requirements while enabling higher productivity.

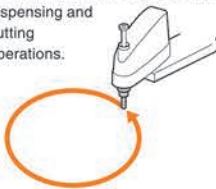


Epson robot

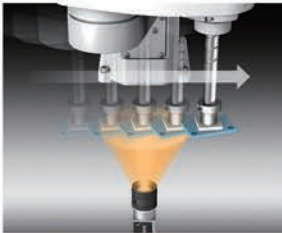
Conventional robot

High quality

- Extremely accurate toolhead positioning enables high-precision dispensing and cutting operations.

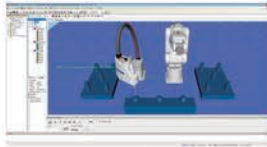


- Integrated machine vision systems boost setup ease and workpiece handling accuracy.



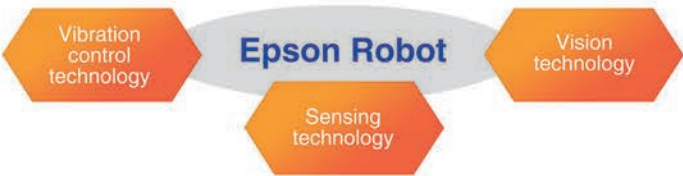
Easy operation

- Intuitive graphical interface makes programming easy even for first-time users.
- From program testing to full production, improved operating ease helps reduce cost and manpower requirements.



3D simulator for work cell layout and toolpath program testing

Software Integration



Global support

Epson supports robotics customers worldwide through an international network of sales and service offices, providing information about equipment configuration options and performing simulations of the tasks that customers want robots to perform. We are also partnered with systems integrators around the world, and can provide end-to-end turnkey solutions to meet virtually any process automation need.

ROBOT SOLUTION

Product lineup

	SCARA robots						
Epson Robot	G Series						
	Top-class speed, repeatability, and low residual vibration						
Publication page	▶ P.9	▶ P.11	▶ P.15	▶ P.17	▶ P.21	▶ P.23	▶ P.23
Model name	G1	G3	NEW GX4	G6	NEW GX8	G10	G20
Payload (kg)	4-axis 3-axis 	Max 	Max 	Max 	Max 	Max 	Max 
Arm length (mm)	 175 	 250  300 	 250  300 	 450  550 	 450  550 	 650  850	 850  1000
Environmental specifications				   	   	   	   
Installation specifications		  	  	  	  	  	  
Compatible controller	RC700-A	RC700-A	RC700-D	RC700-A	RC700-D	RC700-A	RC700-A

SCARA robots							
LS Series				T Series		RS Series	
Proven reliability and functionality				Built-in controller for cost-efficient automation		Original space-saving design for high productivity	
► P.27	► P.29	► P.31	► P.33	► P.35	► P.37	► P.39	► P.41
LS3-B	LS6-B	LS10-B	LS20-B	NEW T3-B	NEW T6-B	RS3	RS4
							
Max 3	Max 6	Max 10	Max 20	Max 3	Max 6	Max 3	Max 4
400	500 600 700	600 700 800	800 1000	400	600	350	550
STD ★ Class 4	STD ★ Class 4	STD ★ Class 4	STD ★ Class 4	STD ★ Class 4	STD ★ Class 4	STD ★ Class 4	STD ★ Class 4
							
RC90-B	RC90-B	RC90-B	RC90-B	Built-in controller	Built-in controller	RC700-A	RC700-A

STD

Standard

★ Class 3

Cleanroom model ISO 03 (Class 10 equiv.) ESD suppression

★ Class 4

Cleanroom model ISO 04 (Class 100 equiv.)

★ Class 5

Cleanroom model ISO 05 (Class 100 equiv.)

IP54

Protection model IP54

IP65


Protection model IP65

IP67

Protection model IP67



Table Top mount



Wall mount



Ceiling mount



Wall/ceiling multi-layout mount

*1: See product page for details

*2: IP20 *3: Standard model only

Controllers

Controllers ► P.59

Software

Software ► P.62

Vision systems

Vision systems ► P.67

Force-sensing systems

Force-sensing systems ► P.70

Options

Software options ► P.74

Robot controller options ► P.76




Manipulator options ► P.79

Option quick-reference table ► P.80

Option setup example ► P.81

ROBOT SOLUTION

Product lineup

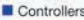

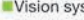

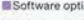


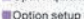

Epson Robot	6-axis robots		
	C Series		
	Slim, lightweight body for greater installation flexibility		
Publication page	► P.43	► P.45	► P.49
Model name	C4	C8	C12
Payload (kg)	Max 4	Max 8	Max 12
Arm length (mm)	600 900	700 900 1400	1400
Environmental specifications	STD Class 3	STD Class 3 Class 4 IP67	STD Class 3
Installation specifications			
Compatible controller	RC700-A	RC700-A	RC700-A

6-axis robots			
N Series			VT
Original compact design for greater freedom of movement in tight quarters			Compact, easy setup, low TCO
► P.51	► P.53	► P.55	► P.57
N2	N6-A850	N6-A1000	VT6L
			
Max  2.5	Max  6	Max  6	Max  6
 450	 850	 1000	 900
	 	 	  
 		 	   
 RC700-A	 RC700-A	 RC700-A	 Built-in controller

-  **STD** Standard
-  **Class 3** Cleanroom model ISO 03 (Class 10 equiv.) ESD suppression
-  **Class 4** Cleanroom model ISO 04 (Class 100 equiv.)
-  **Class 5** Cleanroom model ISO 05 (Class 100 equiv.)
-  **IP54** Protection model IP54
-  **IP65** Protection model IP65
-  **IP67** Protection model IP67
-  Table Top mount
-  Wall mount
-  Ceiling mount
-  Wall/ceiling multi-layout mount

*1: See product page for details

*2: IP20 *3: Standard model only

- Controllers**
-  Controllers ► P.59
- Software**
-  Software ► P.62
- Vision systems**
-  Vision systems ► P.67
- Force-sensing systems**
-  Force-sensing systems ► P.70
- Options**
-  Software options ► P.74
-  Robot controller options ► P.76
-  Manipulator options ► P.79
-  Option quick-reference table ► P.80
-  Option setup example ► P.81

Vision systems

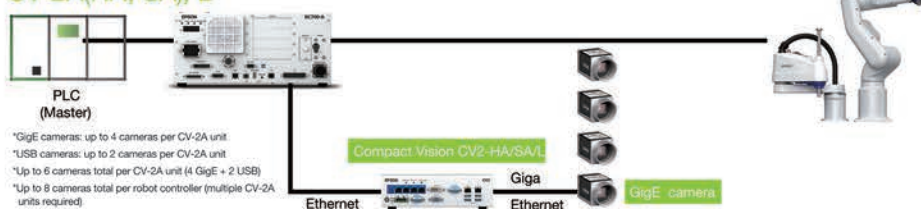
02 Vision Guide

Get advanced machine vision and image processing systems up and running fast with easy-to-use Epson Vision Guide software

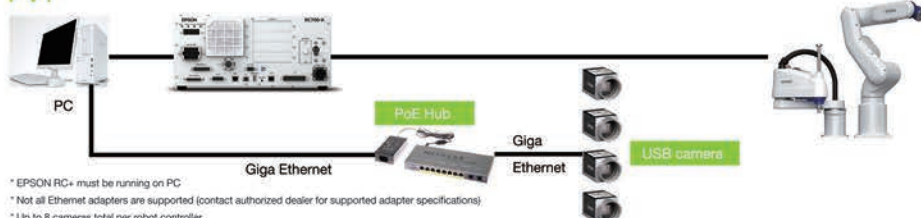
- Built-in image processing engine assists vision-to-robot calibration, making it easy to align the robot's coordinate system with the camera's field of view.
- Workpiece position can be determined relative to robot coordinates without complex calculations.
- Image processing sequences can be created simply by entering a few parameters and pointing and clicking with a mouse.
- Advanced pattern matching and geometric search tools enable easy solution program development without writing a single line of code.

System configuration examples

CV-2A(HA, SA), L



PV1



Features

Convenience

EPSON RC+ software can be used for both robot and machine vision program development.

- Other machine vision systems are more complicated to set up because different software must be used for machine vision and robot program development.

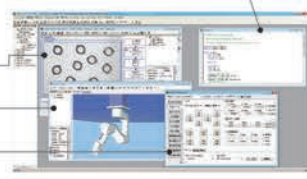
Ease of use

Easy registration of vision objects (positioning coordinates, etc.) enables rapid system setup and deployment.

- Vision objects can be registered via simple drag & drop operation.
- Intuitive interface makes operation easy even for first-time users.

● Robot & Vision Programming

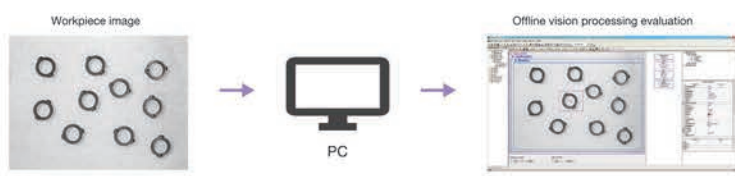
- Vision & Guide Window
- Simulator
- Jog & Teach Window



Vision simulation

Epson Vision software includes a simulator that lets you visualize robot operation and workflow before equipment is actually installed. This makes it easy to plan and configure the system for maximum productivity, and allow program development to proceed while the system is being constructed.

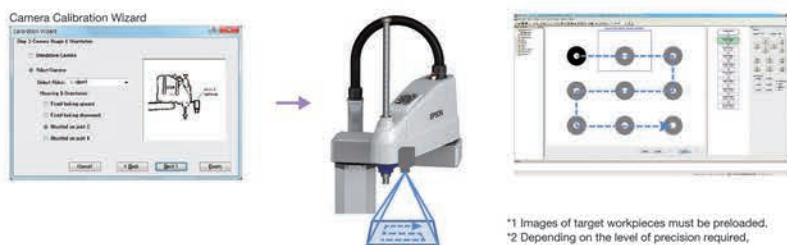
- Vision and process sequencing can be prepared in advance, before system is installed.
- Programs that include image processing sequences can be tested off line.
- If workpiece images are available, image processing can be tested off line.



Easy calibration

A built-in image processing engine makes it easy to align the camera's field of view with the robot's coordinate system, eliminating the need for complex programming when performing vision-to-robot calibration.

The robot automatically*1 follows the steps in the Calibration Wizard to complete the calibration.*2



*1 Images of target workpieces must be preloaded.

*2 Depending on the level of precision required, manual teaching may be necessary.

One-stop service

Whether you need help with initial setup or active production lines, Epson gives you one-stop service convenience for both robot and machine vision systems. With only one service call instead of two to coordinate, your production line will be back up and running in no time.

Force-sensing systems

High-rigidity, high-sensitivity S250 Series force sensors are specifically designed for use with Epson robots, enabling extremely precise force control for high-precision assembly tasks.

03 Force sensors

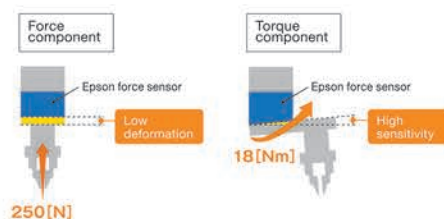
S250 Series force sensors incorporate exclusive Epson crystal piezoelectric technology that ensures a higher level of rigidity and sensitivity than conventional force sensors.

Advantage 1 high rigidity

S250 Series sensors are extremely rigid and resistant to deformation under heavy loads. They have a rated load of 250[N] on the X, Y, and Z axes, and a moment of force of 18[Nm] that makes them particularly sensitive to axial stress.

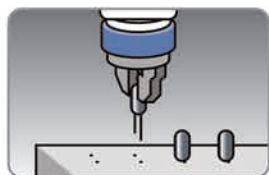
Advantage 2 high sensitivity

S250 Series sensors also ensure excellent sensitivity and quick response with high resolution of 0.1[N] and a low noise level of 0.035[N] on the X, Y, and Z axes.

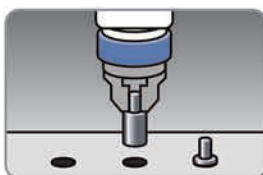


Force-sensing system applications

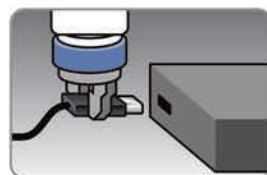
Robots equipped with an Epson S250 Series force sensing system can handle high-precision tasks that cannot be safely automated with teaching or machine vision systems alone. As a result, even production processes that previously required experienced workers to handle delicate and easily damaged workpieces can be fully automated.



Delicate component assembly



Precision mating



Connector insertion



Precision screw assembly



Fine polishing

One-stop Epson support

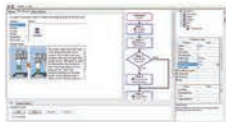
From initial planning and procurement, to setup, adjustment, ongoing maintenance and re-pair, Epson provides one-stop support for all your force-sensing system and automation needs.



High-rigidity, high-sensitivity S250 Series force sensors are specifically designed for use with Epson robots, enabling extremely precise force control for high-precision assembly tasks.

Easy force sensing program development

The new Force Guide interface makes it easy to develop force sensor operating programs simply by dragging Force Guide object icons into a flow chart. In addition, simulator motion display and force waveform monitoring make debugging easier than ever before.



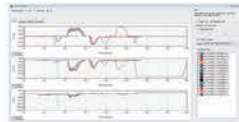
Force Guide GUI

The Force Guide interface provides a clear explanation of what each programming object does, as well as a flow chart view for easy confirmation of program sequence ordering.



Simulator

The simulator enables quick confirmation of the direction of robot arm movement and axis coordinates.



Force waveform display & recording

The force waveform display allows realtime waveforms to be compared with previously recorded waveforms, enabling users to identify operating anomalies and understand how various conditions affect performance.

Direct teaching function

6-axis robots equipped with force sensors can be taught using the Epson TP2/TP3 teaching pendant. Operators can manually move the robot arm and manipulator to the desired position and use the teaching pendant to confirm hardness/softness of the workpiece and the force to be applied.*

Touch-jog function*

In addition to the standard button-operated jog and teaching modes, the TP2 teaching pendant now has a direct teaching mode with a touch-jog function that makes 6-axis robot teaching much easier. During direct teaching operations, you can simply tap the effector to make small, incremental adjustments to the effector's position. There's no need to manually switch input modes because the system can automatically recognize the amount of force being applied to the effector.



* Supported by TP2 teaching pendant and C4, C8, N2, and N6 robots (controller firmware v7.4.6 or newer required)



Product photos

03 S250 Series force sensor



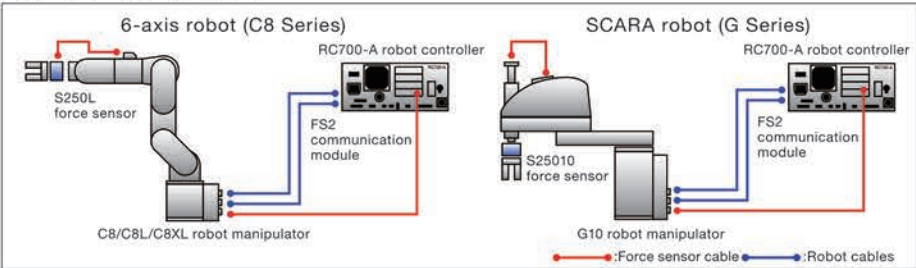
03 FS2 communication module



FS2 system requirements

Supported controller	RC700-A One FS2 module per controller (inserted in option slot)
No. of supported force sensors	One sensor per module
Power supply	Via option slot

System setup examples



ROBOT SOLUTION

Robot controller options

A wide range of controller options are offered to expand the range of tasks and processes that can be automated.

04 Teaching Pendant (TP3)

Compatible controllers

RC700-A T series VT series

Tablet-type teaching pendant with 10.1-inch color touchscreen for intuitive operation and fast, easy 6-axis robot teaching

Easy-to-view screen

- 10.1-inch TFT LCD (w/ LED backlight)
- 1280 x 800 resolution
- Color display



Easy operation

- Simple screen layout, fast response
- Standard RC+ program interface

Advanced features

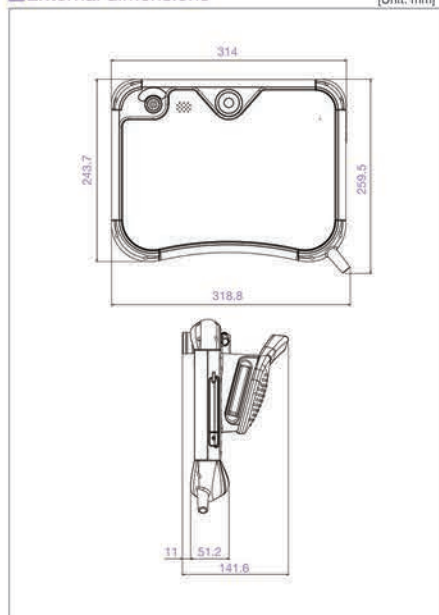
- 3D robot graphics, programming functions and parameter settings
- High-speed test mode
- Programs can be started/stopped from operating panel

Main specifications

Dimensions (mm)	314(W) x 244(H) x 142(D)
Weight	1.5kg (excluding cable)
Body color	Black
Connectivity	Wired
Display	10.1-inch TFT LCD (w/ LED backlight) Resolution: 1280 x 800
Controls	Touchscreen controls Emergency stop button Enable switch Mode switch Control keys (JOG, EXE buttons) USB port
Cable length	5m (10m, 15m extension cables available)
Interface languages	English, Japanese, German, French, Chinese (simplified, traditional)
Ingress protection	IP65
Operating temperature range	0–40°C (stable temperature)
Operating humidity range	5–95% (relative humidity)
Operating environment	Low levels of dust, oil mist, salt, iron particles and other contaminants No flammable or caustic liquids or gases nearby

External dimensions

[Unit: mm]



04 Teaching Pendant (TP2)

Compatible controllers
RC700-A RC90-B T series VT series

Easy-to-use pendant for teaching

- Universal design ensures ease of use for both right-handed and left-handed operators.
- Connects directly to operator unit or controller interface card.



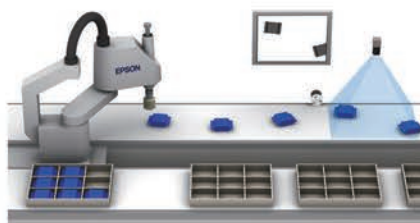
05 Conveyor tracking

Compatible controllers
RC700-A RC90-B T series VT series

Precision tracking for high-productivity pick-and-place operation

- Enables pick-and-place handling of items on a high-speed conveyor.
- Uses machine vision/sensors to detect workpiece and effect robot handling.
- Can automate manual kitting/packaging tasks and help maintain productivity regardless of continuous/intermittent conveyor operation. Can also be used for workpiece assembly.
- Simple start/stop program execution.

*Vision Guide software required.



05 PG motion system

Compatible controllers
RC700-A RC90-B T series VT series

Control peripheral robots for fully integrated process automation

- EPSON RC+ software and pulse generator (PG) cards enable control of multiple third-party drives and motors.
- PG robots and standard EPSON RC+ system robots can be operated simultaneously, and controlled using the same commands.
- PG cards can be used to control X/Y tables, sliders, turrets,

and a wide range of other production/inspection line peripherals.

- Each PG card has 4 channels, and can support from 1 to 4 robots. Up to 4 cards can be mounted.

*PG motion system requires optional EPSON RC+ software and at least one optional PG output board. Drivers and motors for third-party devices are not included.

Robot controller options

06 Emergency stop switch

Compatible controllers
RC100-A RC90-B T series VT series

Helps prevent injuries and damage

- Immediately stops robot operation in emergency situations.



07 RS-232C cards

Compatible controllers
RC100-A RC90-B T series VT series

Expanded serial port connectivity

- 2-port RS-232C cards to connect serial interface devices.



08 I/O expansion cards

Compatible controllers
RC100-A RC90-B T series VT series

Expanded input/output flexibility

- 24-input/16-output expansion cards.



09 Fieldbus I/O (slave)

Compatible controllers
RC100-A RC90-B T series VT series

High-speed peripheral connectivity

- 2048-point I/O support for DeviceNet™, Ethernet/IP™, PROFIBUS®, and PROFINET® networked peripherals, and 384-point I/O support for CC-Link® networked peripherals.

10 Fieldbus I/O (master)

Compatible controllers
RC100-A RC90-B T series VT series

Bidirectional high-speed peripheral connectivity

- Support for DeviceNet™, PROFIBUS®, and Ethernet/IP™ networked peripherals (1024-point I/O).

11 Analog I/O card

Compatible controllers
RC100-A RC90-B T series VT series

For analog control of voltage and current I/O

- Analog control of input and output current and voltage allows regulation of secondary equipment such as paint sprayers to match the speed of robot arm motion. Available in 1 channel and 4 channel models.



12 EUROMAP 67 card

Compatible controllers
RC100-A RC90-B T series VT series

For use with thermoplastic injection molding machines

- EUROMAP 67 compliant electrical interface with 15-point input and 16-point output.



13 I/O cable kit

Compatible controllers
RC100-A RC90-B T series VT series

Cables and connectors for easy connectivity with no soldering required

- A wide range of I/O cables and connectors are available.



14 Hot plug kit

Compatible controllers
RC100-A RC90-B T series VT series

Easy Teach Pendant connection/disconnection

- Allows Teach Pendant to be connected or disconnected without an emergency stop.

*Conversion cable required for use with TP1 or TP2.



15 Wall mount option

Compatible controllers
RC100-A RC90-B T series VT series

Optional wall mounting box

- Allows controller to be mounted on a wall.



Epson robot manipulator options provide the enhanced functionality and configuration flexibility you need for full-process automation.

		G6	G10	G20	L20	L40	L80	L120	R2	R4	VTE	H92	H140	C4	L8	R12	R16
--	--	----	-----	-----	-----	-----	-----	------	----	----	-----	-----	------	----	----	-----	-----

- Enables easy, on-site connection of external wiring by users.
- Ideal for connecting Vision Guide system camera cables or other wiring.

[illegible]

	G3	G6	G10	G20	L53	L56
L510	L520	T9	T6	R14	R53	R54



Compatible manipulators

For easy attachment of effectors to 6-axis robot arms

	C1	C2	C3	C4	C5	C6	C7	C8	C9	C10	C11	C12	C13	C14	C15	C16	C17	C18	C19	C20	C21	C22	C23	C24	C25	C26	C27	C28	C29	C30	C31	C32	C33	C34	C35	C36	C37	C38	C39	C40	C41	C42	C43	C44	C45	C46	C47	C48	C49	C50	C51	C52	C53	C54	C55	C56	C57	C58	C59	C60	C61	C62	C63	C64	C65	C66	C67	C68	C69	C70	C71	C72	C73	C74	C75	C76	C77	C78	C79	C80	C81	C82	C83	C84	C85	C86	C87	C88	C89	C90	C91	C92	C93	C94	C95	C96	C97	C98	C99	C100	C101	C102	C103	C104	C105	C106	C107	C108	C109	C110	C111	C112	C113	C114	C115	C116	C117	C118	C119	C120	C121	C122	C123	C124	C125	C126	C127	C128	C129	C130	C131	C132	C133	C134	C135	C136	C137	C138	C139	C140	C141	C142	C143	C144	C145	C146	C147	C148	C149	C150	C151	C152	C153	C154	C155	C156	C157	C158	C159	C160	C161	C162	C163	C164	C165	C166	C167	C168	C169	C170	C171	C172	C173	C174	C175	C176	C177	C178	C179	C180	C181	C182	C183	C184	C185	C186	C187	C188	C189	C190	C191	C192	C193	C194	C195	C196	C197	C198	C199	C200	C201	C202	C203	C204	C205	C206	C207	C208	C209	C210	C211	C212	C213	C214	C215	C216	C217	C218	C219	C220	C221	C222	C223	C224	C225	C226	C227	C228	C229	C230	C231	C232	C233	C234	C235	C236	C237	C238	C239	C240	C241	C242	C243	C244	C245	C246	C247	C248	C249	C250	C251	C252	C253	C254	C255	C256	C257	C258	C259	C260	C261	C262	C263	C264	C265	C266	C267	C268	C269	C270	C271	C272	C273	C274	C275	C276	C277	C278	C279	C280	C281	C282	C283	C284	C285	C286	C287	C288	C289	C290	C291	C292	C293	C294	C295	C296	C297	C298	C299	C300	C301	C302	C303	C304	C305	C306	C307	C308	C309	C310	C311	C312	C313	C314	C315	C316	C317	C318	C319	C320	C321	C322	C323	C324	C325	C326	C327	C328	C329	C330	C331	C332	C333	C334	C335	C336	C337	C338	C339	C340	C341	C342	C343	C344	C345	C346	C347	C348	C349	C350	C351	C352	C353	C354	C355	C356	C357	C358	C359	C360	C361	C362	C363	C364	C365	C366	C367	C368	C369	C370	C371	C372	C373	C374	C375	C376	C377	C378	C379	C380	C381	C382	C383	C384	C385	C386	C387	C388	C389	C390	C391	C392	C393	C394	C395	C396	C397	C398	C399	C400	C401	C402	C403	C404	C405	C406	C407	C408	C409	C410	C411	C412	C413	C414	C415	C416	C417	C418	C419	C420	C421	C422	C423	C424	C425	C426	C427	C428	C429	C430	C431	C432	C433	C434	C435	C436	C437	C438	C439	C440	C441	C442	C443	C444	C445	C446	C447	C448	C449	C450	C451	C452	C453	C454	C455	C456	C457	C458	C459	C460	C461	C462	C463	C464	C465	C466	C467	C468	C469	C470	C471	C472	C473	C474	C475	C476	C477	C478	C479	C480	C481	C482	C483	C484	C485	C486	C487	C488	C489	C490	C491	C492	C493	C494	C495	C496	C497	C498	C499	C500	C501	C502	C503	C504	C505	C506	C507	C508	C509	C510	C511	C512	C513	C514	C515	C516	C517	C518	C519	C520	C521	C522	C523	C52
--	----	----	----	----	----	----	----	----	----	-----	-----	-----	-----	-----	-----	-----	-----	-----	-----	-----	-----	-----	-----	-----	-----	-----	-----	-----	-----	-----	-----	-----	-----	-----	-----	-----	-----	-----	-----	-----	-----	-----	-----	-----	-----	-----	-----	-----	-----	-----	-----	-----	-----	-----	-----	-----	-----	-----	-----	-----	-----	-----	-----	-----	-----	-----	-----	-----	-----	-----	-----	-----	-----	-----	-----	-----	-----	-----	-----	-----	-----	-----	-----	-----	-----	-----	-----	-----	-----	-----	-----	-----	-----	-----	-----	-----	-----	-----	-----	------	------	------	------	------	------	------	------	------	------	------	------	------	------	------	------	------	------	------	------	------	------	------	------	------	------	------	------	------	------	------	------	------	------	------	------	------	------	------	------	------	------	------	------	------	------	------	------	------	------	------	------	------	------	------	------	------	------	------	------	------	------	------	------	------	------	------	------	------	------	------	------	------	------	------	------	------	------	------	------	------	------	------	------	------	------	------	------	------	------	------	------	------	------	------	------	------	------	------	------	------	------	------	------	------	------	------	------	------	------	------	------	------	------	------	------	------	------	------	------	------	------	------	------	------	------	------	------	------	------	------	------	------	------	------	------	------	------	------	------	------	------	------	------	------	------	------	------	------	------	------	------	------	------	------	------	------	------	------	------	------	------	------	------	------	------	------	------	------	------	------	------	------	------	------	------	------	------	------	------	------	------	------	------	------	------	------	------	------	------	------	------	------	------	------	------	------	------	------	------	------	------	------	------	------	------	------	------	------	------	------	------	------	------	------	------	------	------	------	------	------	------	------	------	------	------	------	------	------	------	------	------	------	------	------	------	------	------	------	------	------	------	------	------	------	------	------	------	------	------	------	------	------	------	------	------	------	------	------	------	------	------	------	------	------	------	------	------	------	------	------	------	------	------	------	------	------	------	------	------	------	------	------	------	------	------	------	------	------	------	------	------	------	------	------	------	------	------	------	------	------	------	------	------	------	------	------	------	------	------	------	------	------	------	------	------	------	------	------	------	------	------	------	------	------	------	------	------	------	------	------	------	------	------	------	------	------	------	------	------	------	------	------	------	------	------	------	------	------	------	------	------	------	------	------	------	------	------	------	------	------	------	------	------	------	------	------	------	------	------	------	------	------	------	------	------	------	------	------	------	------	------	------	------	------	------	------	------	------	------	------	------	------	------	------	------	------	------	------	------	------	------	------	------	------	------	------	------	------	------	------	------	------	------	------	------	------	------	------	------	------	------	------	------	-----

G1	G3	G6	G10	G20	L55	L56	L510	L520	L5	L6	L7	RS3	RS4	C4	C6	N2	N6
----	----	----	-----	-----	-----	-----	------	------	----	----	----	-----	-----	----	----	----	----

G1	G3	G6	G10	G20	L100	L200	L300	L400	L8	H8	C50	R53	R54	C4	C8	N2	N8
----	----	----	-----	-----	------	------	------	------	----	----	-----	-----	-----	----	----	----	----

Straight type



L-shaped angle type



	G3	G6	G10	G20	L53	L56	L510	L520	T3	T6	VF6	RS3	RS4	C4	C6	N2	N6
--	----	----	-----	-----	-----	-----	------	------	----	----	-----	-----	-----	----	----	----	----



Bracket design varies according to robot; please specify model when ordering.

ROBOT SOLUTION

Option quick-reference table

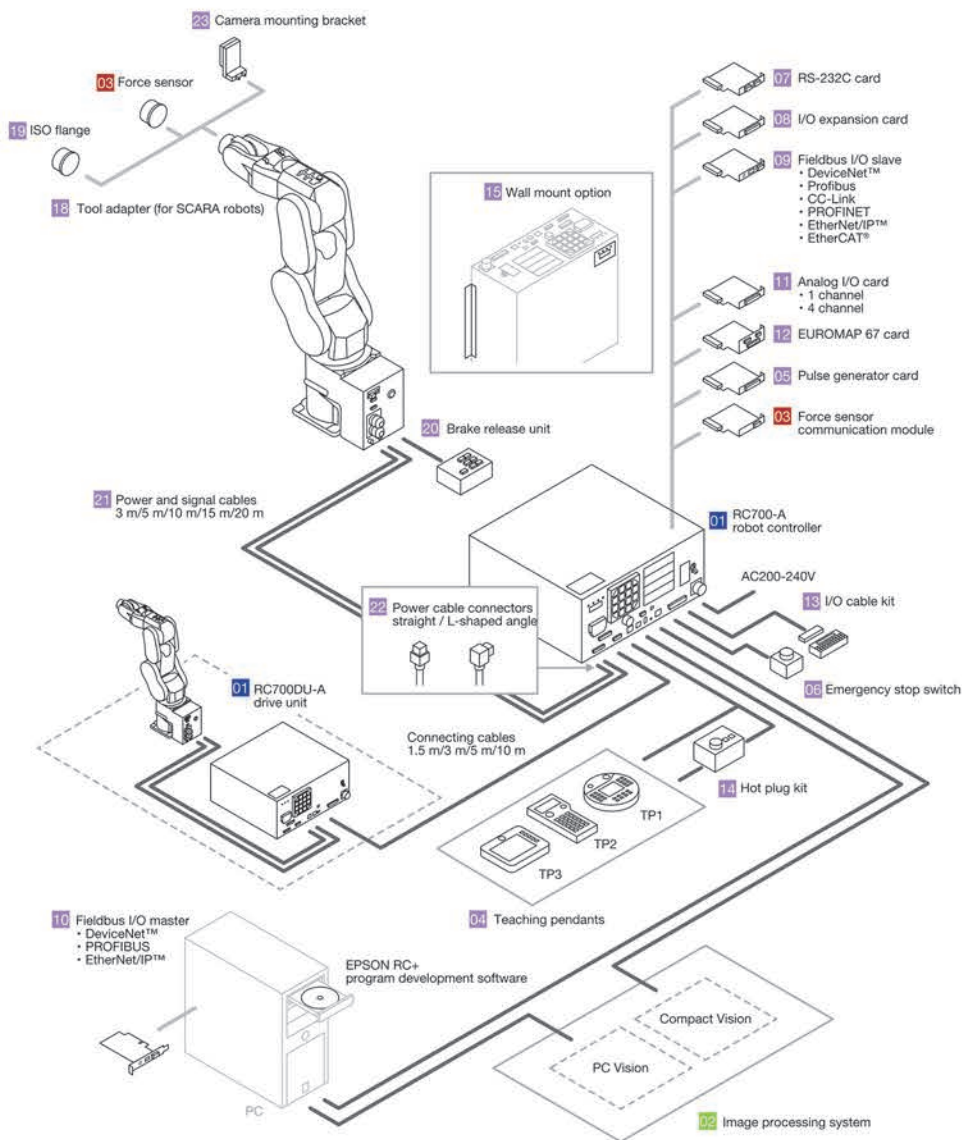
Software options					
	RC700-A	RC700-D	RC90-B	T series	VT
02 Vision Guide 7.0	●	●	●	●	●
03 Force Guide 7.0	●	●	—	—	—
RC+ API 7.0	●	●	●	●	●
ECP	●	●	●	●	●
GUI Builder 7.0	●	●	●	●	●
OCR	●	●	●	●	●
VRT	●	●	●	●	●

Controller options					
	RC700-A	RC700-D	RC90-B	T series	VT
04 Teaching Pendant (TP2)	●	●	●	●	●
04 Teaching Pendant (TP3)	●	●	—	●	●
05 Conveyor tracking	●	●	●	—	—
05 PG motion system	●	●	●	—	—
06 Emergency stop switch	●	●	●	●	●
07 RS-232C cards	●	●	●	—	—
08 I/O expansion cards	●	●	●	—	—
09 Fieldbus I/O (Slave)	●	●	●	●	●
10 Fieldbus I/O (Master)	●	●	●	●	●
11 Analog I/O card	●	●	●	—	—
12 EUROMAP 67 card	●	●	●	—	—
13 I/O cable kit	●	●	●	—	—
14 Hot plug kit	●	●	—	●	●
15 Wall mount option	●	●	—	—	—

Manipulator options														
	G1	G3	G14	G6	G18	G19/G20	LS31/S61/S10/LS20	T3-B/TB-B	RS3/RS4	C4	C8	N2	N6	VT5
16 External wiring units	—	—	—	●	●	●	—	—	—	—	—	—	—	●
17 Internal wiring unit	—	—	—	—	—	—	—	—	●	—	—	—	—	—
18 19 Tool adapters/ISO flanges	—	●	●	●	●	●	●	●	●	—	●	●	●	●
20 Brake release units	—	—	—	—	—	—	—	—	—	●	●	●	●	—
21 Power and signal cables	●	●	●	●	●	●	●	(built-in controller)	●	●	●	●	●	(built-in controller)
Cable length (m)	3,5,10,15,20					3,5,10	3,5,10,15,20							
Cable type (Standard/High-flex)	Standard						Standard		Standard/High-flex	Standard	Standard/High-flex			
22 Power cable connectors (Straight/L-type)	Straight/L-type						Standard		Straight/L-type					
23 Camera mounting bracket	—	●	●	●	●	●	●	●	●	●	●	●	●	●
RC700DU-A (Drive unit)	●	●	—	●	—	●	—	—	●	●	●	—	●	—

Option setup example

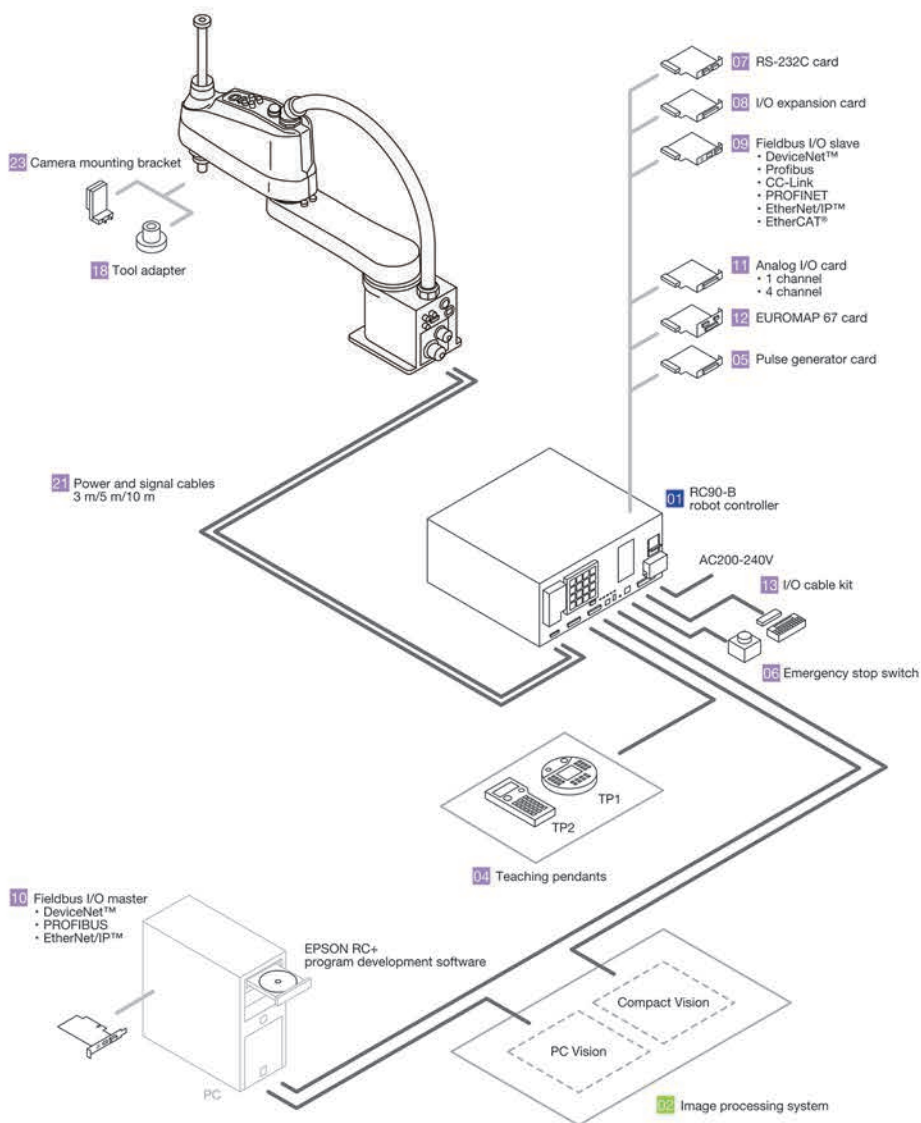
RC700-A controller with C series robots



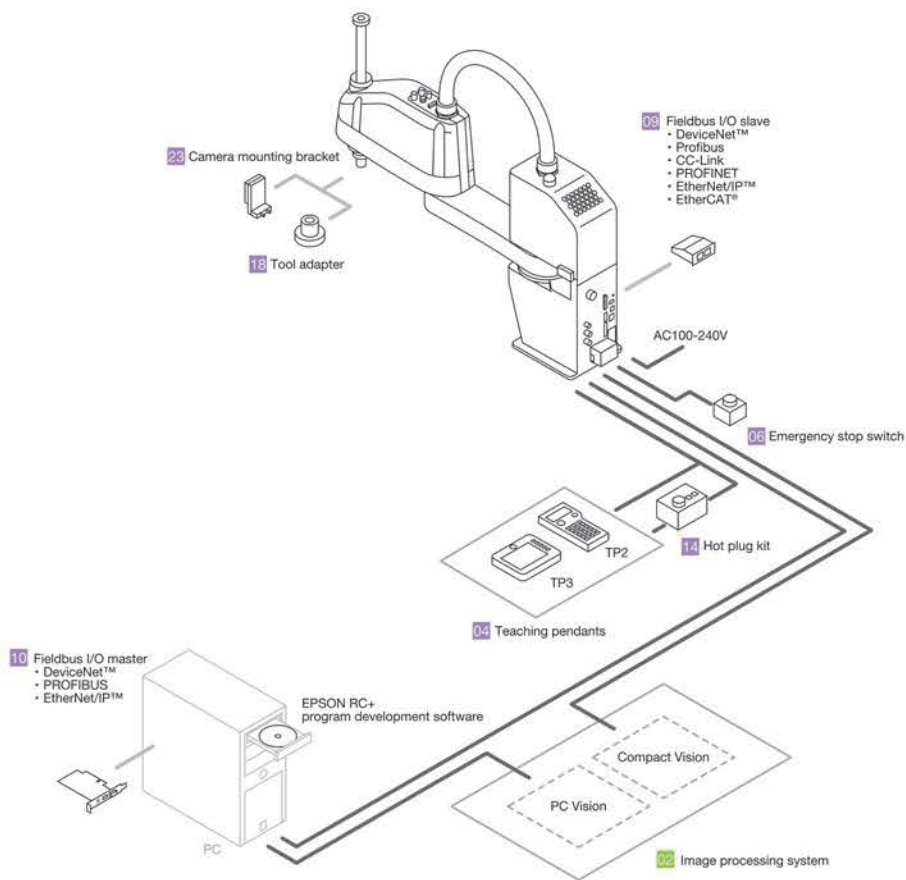
ROBOT SOLUTION

Option setup example

RC90-B controller



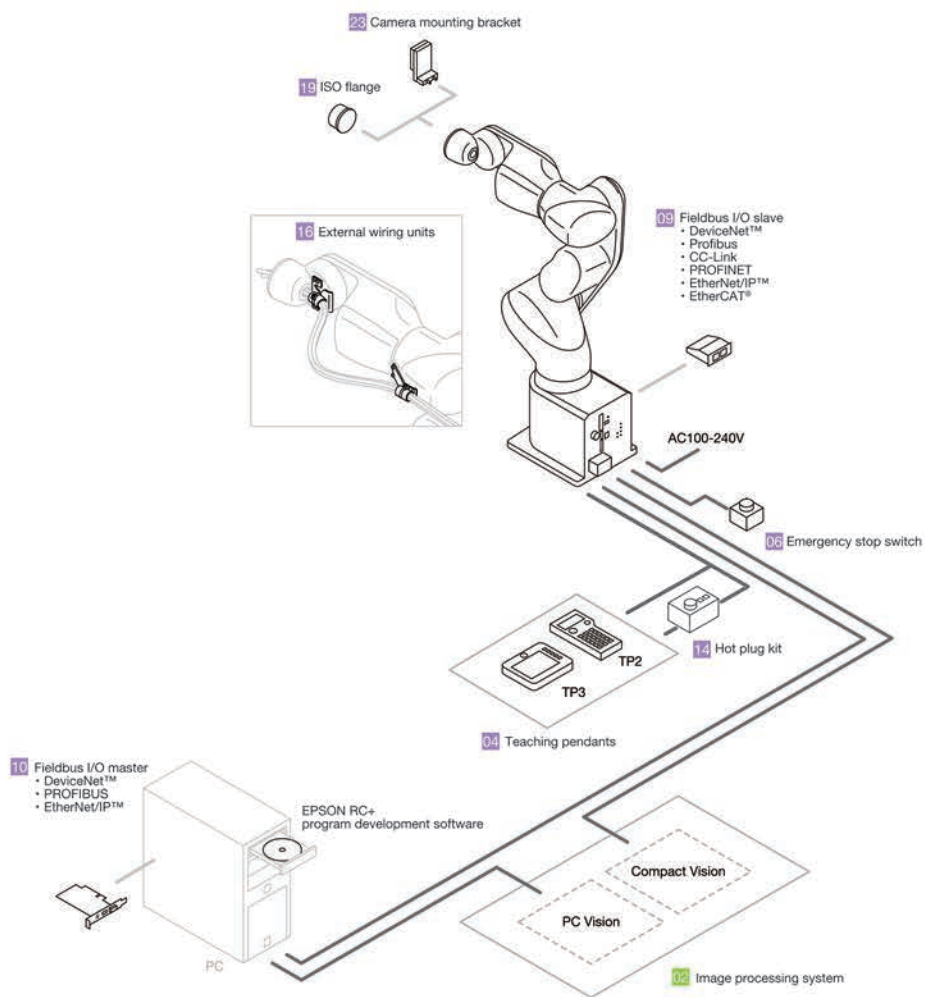
T series robot



ROBOT SOLUTION

Option setup example

VT series robot



ENGINEERED FOR good

EPSON

**GET
PRECISE**
**STAY AHEAD WITH COMPACT
EFFICIENT ROBOTICS**



**High-speed precision
with GyroPlus**

**Compact design
for tight spaces**

**Versatile for
multiple applications**



TRANSFORMATION. DETAILS MAKE THE DIFFERENCE.

All-in-one SCARA T3

Space-saving compact design, built-in controller for simple configuration – ensures high productivity with minimum downtime, significantly reducing total cost of ownership.

Folding-arm 6-Axis N2

All-new folding arm mechanism – a world first in 6-axis robot design – enables complex, high-precision assembly tasks to be performed in extremely limited spaces.

Compact 6-Axis C8

High performance in a slimline package, allows payloads up to 8Kg while maintaining fast speeds and cycle times. Water and dust resistant. Can be wall or ceiling mounted.

Long-reach SCARA LS6

Added reach and payload capacity, small footprint, proven reliability with outstanding functionality and cost-performance for pick-and-place and assembly tasks.

Enjoy the advantages of automation with Epson Robots.

Some manufacturing industries seek automation, but require the tools to upgrade from manual production. Others want to learn more about the possibilities and benefits of automation before progressing.

Whatever stage you're at right now, take a look at the advantages of the industry-changing technology built into Epson robots. With incredible sensitivity, our amazingly-precise, outstandingly-reliable robots complete tasks that previously defied automation. Enabling solutions that increase your productivity and enhance your reputation, while reducing your costs.

Transform your production line and your bottom line, with Epson.
Remember, it's in the details. epson.co.id/industrial-robots

ENGINEERED FOR good

EPSON



2025 PRODUCT CATALOGUE

EPSON

PT EPSON INDONESIA

CIBIS Tower 9, 3rd Floor, Cibis Business Park
Jalan T.B. Simatupang No. 2 Jakarta 12560
Tel. (021) 808-66-766 Fax. (021) 808-66-799



1-500-766



0812-12-37766

HOTLINE CALL CENTER
(NATIONAL AREA)



Follow us

@EpsonIndonesia

www.twitter.com/EpsonIndonesia



Become our fans

Epson Indonesia

www.fb.com/EpsonIndonesia



Follow Us

Epson Indonesia

www.linkedin.com/company/epson-indonesia



Follow Us

EpsonIndonesia

www.instagram.com/EpsonIndonesia



Visit Us

Epson Indonesia

www.epson.co.id



Visit Us

Epson Indonesia

www.youtube.com/EpsonIndonesia