



Epson® SureColor® P5000 Series

Professional 17" Wide-Format 10-Color Inkjet Printers

Sales Reference Guide

Official Team Partner

EPSON
EXCEED YOUR VISION



AMG
PETRONAS
MOTORSPORT



© Joey Ikemoto Photography

Print Your Legacy.

Designed to set the benchmark for professional imaging excellence on the desktop, the Epson SureColor P5000 Series 17"-wide printers offer a refined design for enhanced performance and reliability.

Available in three versions:

- **Standard Edition** – for professional photography, fine art and commercial graphics
- **Designer Edition** – for graphic design and advanced photography
- **Commercial Edition** – for commercial and flexographic proofing applications



SureColor P5000 Standard Edition

for professional photography, fine art and commercial graphics



■ Refined Printer Design

- Improved dust and static control for reduced printhead nozzle maintenance

■ Improved Black Density

- Higher-density Black pigments than our previous generation inks for a wider contrast ratio and enhanced clarity for both color and black-and-white exhibition-quality prints

■ Exceptional Print Permanence

- UltraChrome HDX[®], our Next-generation pigment ink technology, is independently rated by Wilhelm Imaging Research for up to 200 years for color and up to 400 years for black-and-white prints, more than twice our previous generation of ink¹

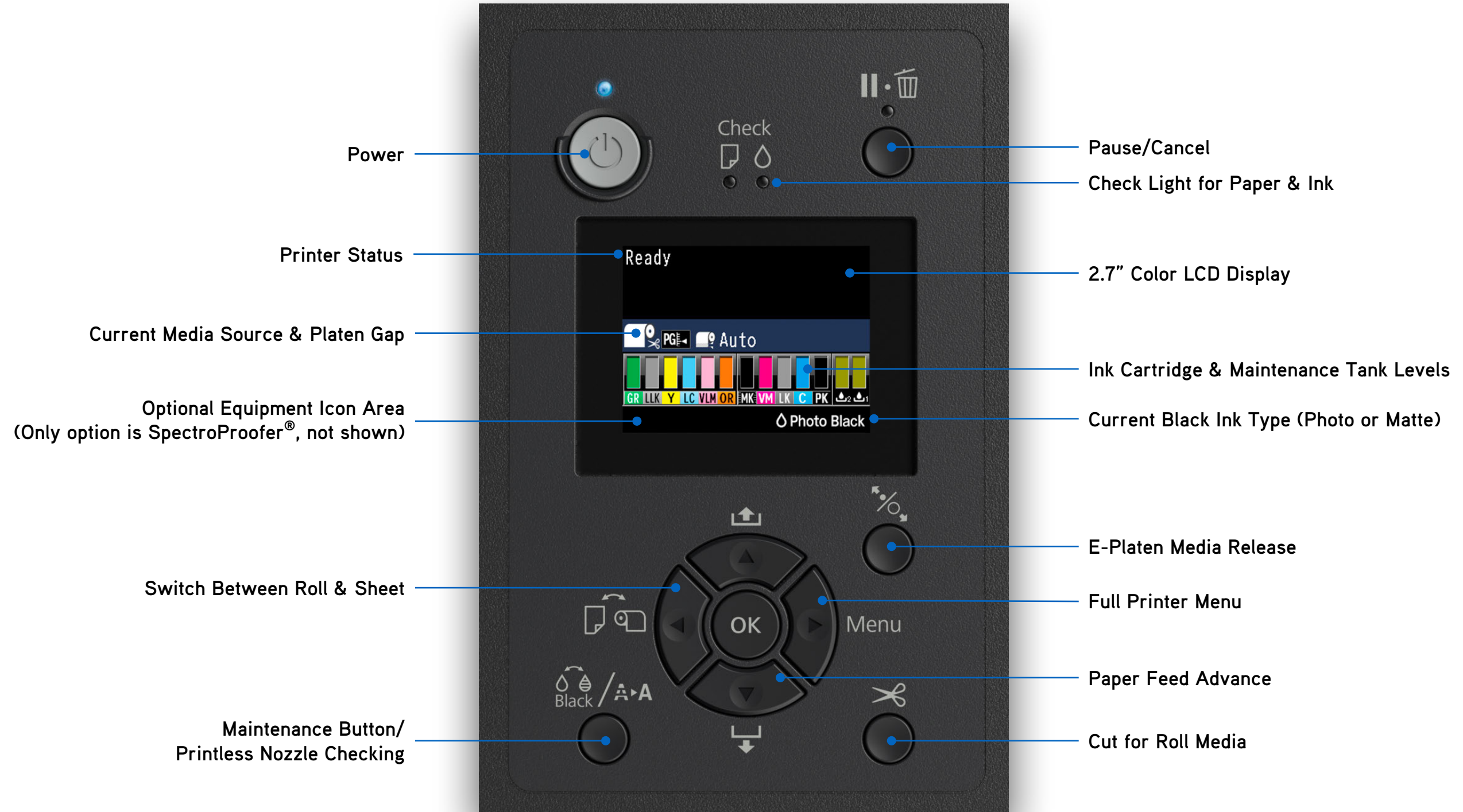
■ Remarkable Detail

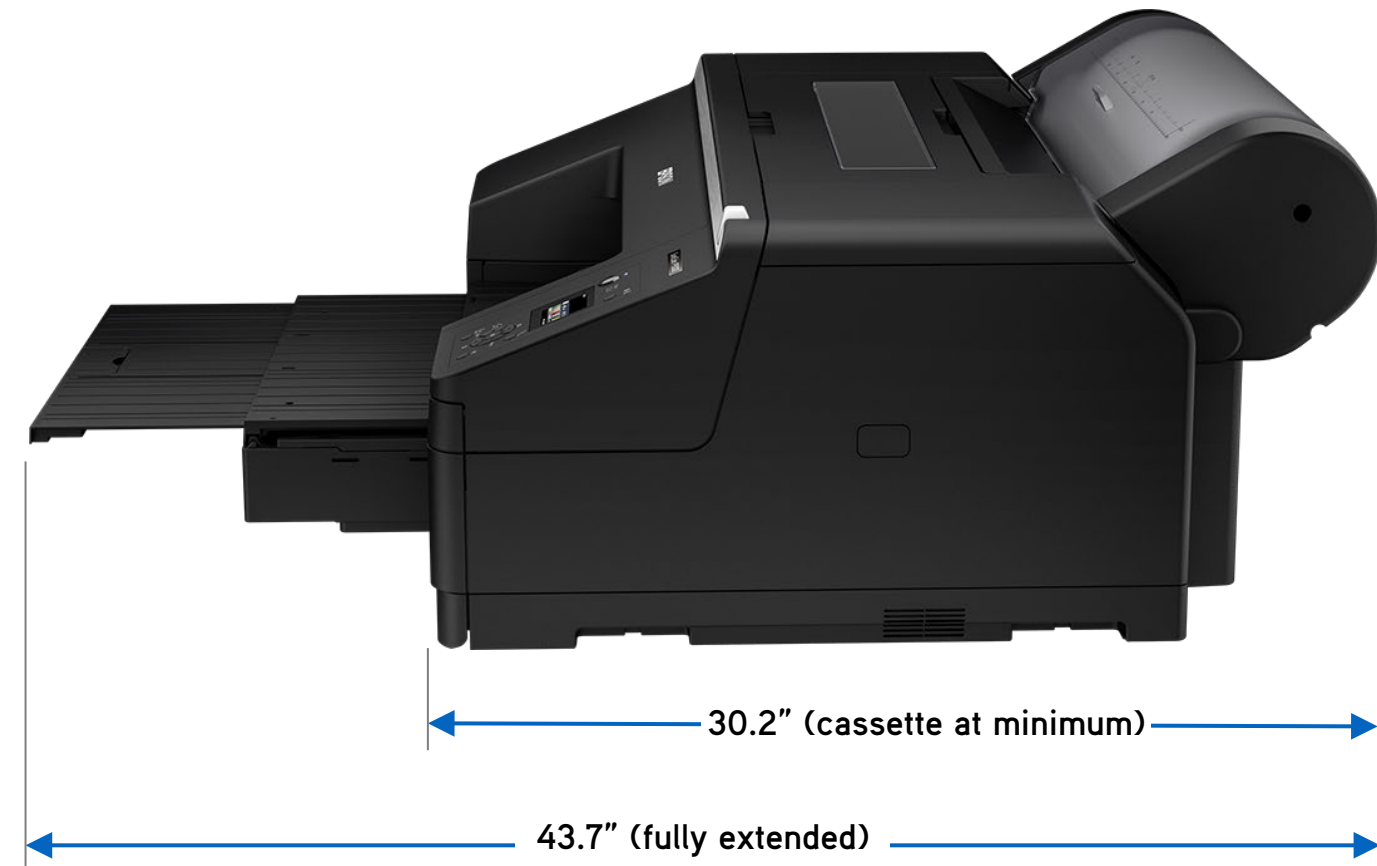
- Epson PrecisionCore[®] TFP[®] printhead delivers high print speeds with 360 nozzles per color channel, with variable-size ink droplets as small as 3.5 picoliters accurately shaped and positioned on the print

■ Epson Precision Dot Screening Algorithm

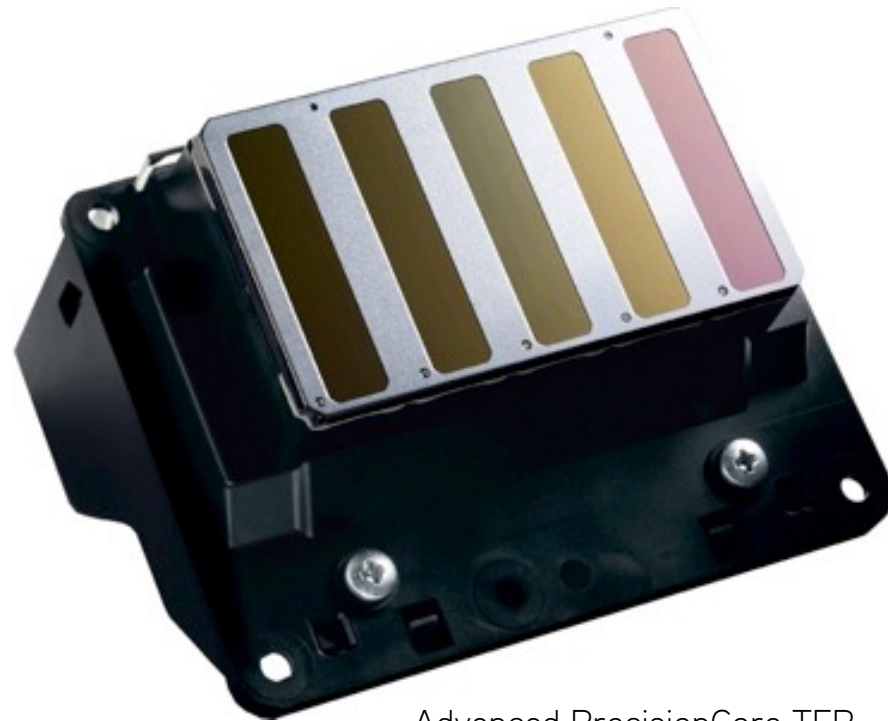
- Ensures incredibly accurate control of the sizing and mixing of ink droplets for beautiful prints







115 lb



Advanced PrecisionCore TFP
Printhead

■ Professional Printhead Technology

- 10-channel advanced PrecisionCore TFP printhead with 360 nozzles per inch
- Ink- and static-resistant surface coating for reduced nozzle clogging
- Printless nozzle checking saves time and media

■ High-Resolution Printing

- Capable of printing up to 2880 x 1440 dpi
- Supports variable-sized droplet technology as small as 3.5 picoliters

■ Auto Black Ink Type Switching

- With both Photo/Matte Black inks delivered through a single channel, Black ink type can be selected automatically based on the chosen media, or via user-prompted
- Two modes: “Normal” for assured print quality and “Quick” for faster switching and reduced ink usage

	8" x 10" Centered on 8.5" x 11"	11" x 14" On 11" x 14" Maximum	11" x 17" Centered on 13" x 19"	16" x 20" Centered on 17" x 22"
720 x 720 HS	0:59	1:42	1:58	2:46
1440 x 720 HS	1:28	2:31	2:57	4:11
2880 x 1440 HS	2:26	4:04	4:46	6:48

Print times are based upon the start of printhead movement over the page to drop ink – Stop time based on printhead moving to the "park" position

Test images printed on Epson Premium Luster Photo Paper (260) using a standard ICC color managed workflow via Adobe® Photoshop®

HS = High-Speed Mode (Bi-Directional Print Mode)

Maximum on sheet = 3 mm non-printable margins on all sides

Print speeds are shown in min:sec



200 ml UltraChrome HDX Ink Cartridges
Standard Edition ink set shown
(80 ml initialization ink cartridges in-box)

■ Next-Generation 10-Color Pigment Ink Technology

- All-new pigments redefine the standard for photographic imaging excellence
- Improved resin encapsulation technology for superior gloss uniformity
- Same pigments as the acclaimed 24" SureColor P7000 and 44" SureColor P9000
- These printers are designed for use with Epson cartridges only, not third-party cartridges or ink²

■ Improved Black Inks

- New Photo/Matte Black pigments are 1.5x denser than our previous generation ink
- Three-level Black inks for producing professional black-and-white prints
- A wider contrast ratio results in optically clearer and sharper images

■ Exceptional Print Permanence

- UltraChrome HDX, our Next-generation pigment ink technology, is independently rated by Wilhelm Imaging Research for up to 200 years for color and up to 400 years for black-and-white prints, more than twice our previous generation of ink¹

■ Expanded Color Gamut

- UltraChrome HDX pigment inks offer the widest color gamut among Epson ink sets

1 2 3 4 5 6 7 8 9 10 11

Standard and Designer Edition Ink Set
for photography, fine art and graphic design



Commercial Edition Ink Set
for commercial and flexographic proofing



Ink set configuration with Violet is not recommended for photography.

■ Professional Roll Media Handling

- Power-driven for simple loading and unloading of professional-sized roll media
- Supports 2" and 3" cores for photo, canvas, fine art and proofing papers up to 1.5 mm thick
- Full 4-sided BorderFree® printing at common widths: 10", 13", 14", 16.5" & 17". BorderFree for 8", 11" and 16.5" widths requires use of the spacer and supports 2" core media only
- Redesigned roll cover and felt wiper strip reduce interior dust for improved reliability
- Track roll media length from the Control Panel and print barcodes on the media

■ Auto-Switching Roll and Cassette Sheet Feeding

- Both sources can have media loaded at the same time
- Simple software selection to choose between roll and cassette

■ High-Speed Rotary Cutting

- Smooth single-pass cuts
- User replaceable





■ Printing on Sheet Sizes from 8" x 10" to 17" x 22"

- Centered printing with 3 mm minimum margins, all sides with maximum selected
- A full 8" x 10" print on sheet media requires letter-sized media

■ Top Single-Sheet Manual Feed

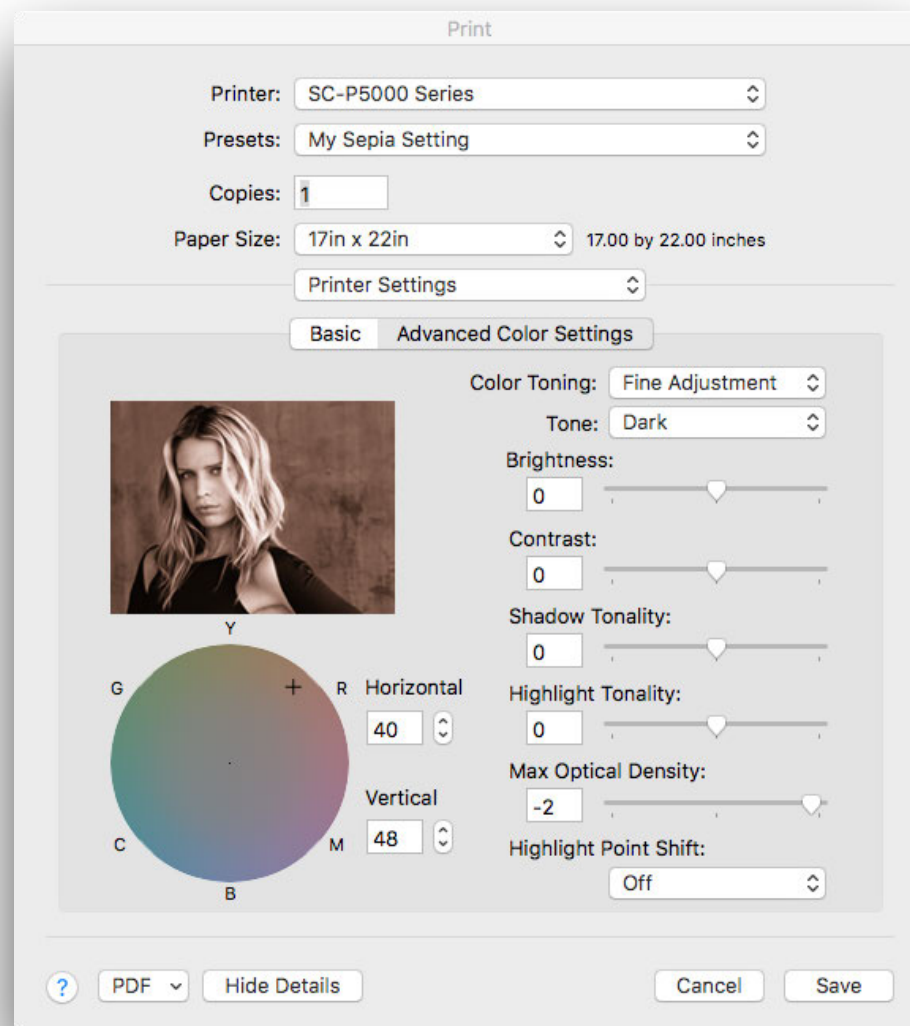
- Perfect for individual prints requiring a different size or media type

■ Front Straight Manual Feed Path

- Excellent for thicker, soft-surface fine art papers
- Handles posterboard and other aqueous-coated rigid materials up to 1.5 mm thick

■ High-Capacity Cassette

- Load up to 100 sheets of premium paper for highly productive printing
- Auto-switching with roll media source (both sources can have media loaded at the same time)
- New Dust Cover for reduced printhead maintenance when using large sheet media



Advanced Black-and-White Driver Dialog
Complete Control of Grayscale Toning

Apple macOS 10.12.2 screen capture shown

■ Professional Photographic Drivers

- Apple® macOS 10.12™ - through MAC OS® X 10.7
- Microsoft® Windows® 10 - through Windows 7 (32-bit & 64-bit)

■ Unique EPSON Precision Dot Screening

- Advanced algorithm to determine color mixing and variable dot size usage
- Fixed and three-level variable-sized droplet technology for outstanding print quality

■ Advanced Black-and-White Printing Technology

- Unique screening algorithm utilizes our three-level Black inks for producing professional black-and-white prints
- Some of the world's greatest black-and-white prints have been produced using this driver technology

■ High-Quality ICC Profiles

- Professional ICC profiles installed automatically with the driver
- Additional profiles offered as new media are introduced; can be easily added and used



SureColor P5000 Commercial Edition

for commercial and flexographic proofing applications



Violet Pigment Ink



■ For Commercial and Flexographic Proofing Applications

- Includes All Standard Edition features. Except Light Light Black ink which is replaced with Violet ink
- With Violet ink 99% of the PANTONE® PLUS solid coated colors are achieved for accuracy in brand color matching
- Contract proofs are dry, stable and ready for accurate review within minutes
- These are just some of the reasons why Epson 10-color printers have been the overwhelming choice of prepress professionals for the last decade

■ Supported by Industry-Leading Advanced Workflow Software

- Caldera, CGS, DiNAX, EFI, ESKO, GMG, Onyx and Wasatch to name just a few
- Support for full color automation with the optional Epson 17" SpectroProofer

Note: Once a printer is primed with ink, the ink configuration (LLK or Violet) is permanent.
With Light Light Black Ink removed the Advanced Black-and-White Print Mode in the driver is not available.



Epson Stylus® Pro 4900 customers can install an existing 17" SpectroProofer UVS. Earlier SpectroProofer models based on an ISL20EP or ILS20EPUV require purchasing the ILS30EP (Part #C12C932021). A RIP software upgrade at additional cost may also possibly required.

■ In-Line 17" Spectrophotometer

- Automated color setup, re-linearization and control strip verification when used with an optional advanced proofing or packaging workflow
- An option that can be purchased and added easily at anytime
- Supported by third-party Software: Caldera, CGS, DiNAX, EFI, ESKO, GMG, ONYX and others

■ Powered by Industry-Standard Technology

- 17"-wide mechanism powered by an X-Rite ILS30EP spectrophotometer
- UV-selectable between M0, M1, and M2 illuminates, supporting the latest standards

■ Operation Changes of Note

- The straight-through paper path is not available with SpectroProofer installed
- Minimum roll cut length increases from 3.2" to 8.3"
- Output catch tray capacity becomes single sheet



SureColor P5000 Designer Edition

for graphic design and advanced photography



■ **Developed for Graphic Design and Advanced Photography**

- Includes All Standard Edition features, plus EFI® Fiery® eXpress 4.6.1 for Epson software
- Optimal for users of the graphic design applications in the Adobe Creative Suite®; Illustrator®, InDesign®, Photoshop and similar applications for creative design and layout

■ **Core Features of EFI Fiery eXpress for Epson**

- True Adobe PostScript® 3™ file processing with both PDF Print Engine and CPSI Interpreters
- Focused on imaging for industry standards: PDF/X, SWOP, GRACol, Fogra, Idealliance
- Accurate imaging of CMYK and RGB files
- Color processing for PANTONE PLUS, HKS®, TOYO and DIC Spot Color Libraries

■ **Advanced Usability Features for Design and Photography**

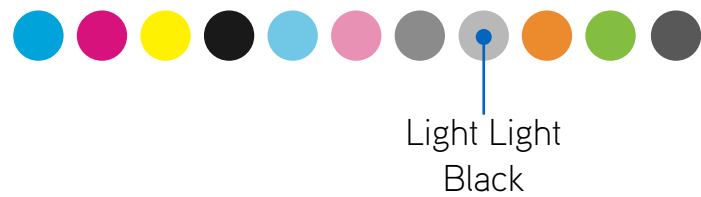
- Simple, reliable and consistent self-contained color management
- Shared Hot Folder for automatic printing across networks or tethered cameras
- Automatic trimming to length for roll printing; no need to setup custom page sizes
- Collections for automated grouping of multiple images for optimal media usage

The optional SpectroProofer is not supported in EFI Fiery eXpress for Epson. This software is also only sold as part of the Designer Edition printer bundle.



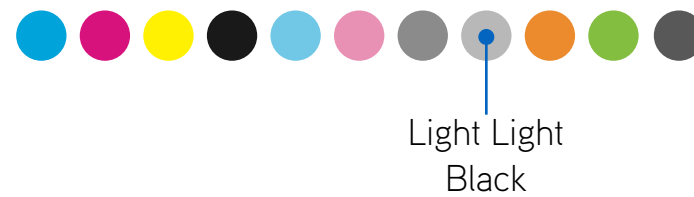
Standard Edition

For professional photography,
fine art and commercial graphics



Designer Edition

For graphic design and
advanced photography



Commercial Edition

For commercial and flexographic
proofing applications



Description	SCP5000SE (Standard)	SCP5000DES (Designer)	SCP5000CE (Commercial)
17" SureColor P5000 Printer Engine	✓	✓	✓
Ink Cartridges: C, Lc, Vm, Vlm, Lk, Pk, Mk, O, G	✓	✓	✓
Ink Cartridge: Light Light Black	✓	✓	Not applicable
Ink Cartridge: Violet	Not applicable	Not applicable	✓
Epson Driver Advanced Black & White Print Mode	✓	✓	Not available
PANTONE Plus Solid-Coated Color Matching	98%	98%	99%
EFI Fiery eXpress for Epson v4.6.1	Not available	✓	Not available
CMYK and Spot Color Printing	Requires purchase of additional RIP software	✓	Requires purchase of additional RIP software
Professional Imaging Software and Manuals	All Epson driver, utility software and full manuals are available via download from epson.com/support/p5000		

Description	SCP5000SE (Standard)	SCP5000DES (Designer)	SCP5000CE (Commercial)
17-Inch Printer Engine (all are the same)	✓	✓	✓
Start Here, Basics Guide, Warranty Statement AC Power Cord	✓	✓	✓
Roll media spindle, 2x 3" core adapters and borderless print spacer	✓	✓	✓
Cassette Dust Cover	✓	✓	✓
Cleaning Sheet (Pack of 1)	✓	✓	✓
Installation Ink Cartridge Set with Light Light Black	✓	✓	
Installation Ink Cartridge Set with Violet			✓
EFI Fiery eXpress for Epson v4.6.1		✓	

Installation Ink Cartridges bundled in the printer box have an 80 mL fill volume.
A significant portion of the ink in these cartridges is used to initialize the printer.



SureColor P800



SureColor P5000

Feature Description	SureColor P800	SureColor P5000
Pigment Ink Type	8-Color UltraChrome® HD	10-Color UltraChrome HDX
Cartridge Fill Volume / MSRP	80 mL / \$59.95	200 mL / \$99.95
Ink Colors	Cyan, Vivid Magenta, Vivid Light Magenta, Cyan, Light Cyan, Yellow, Photo Black, Matte Black, Light Black, Light Light Black	Cyan, Vivid Magenta, Vivid Light Magenta, Cyan, Light Cyan, Yellow, Photo Black, Matte Black, Light Black, Orange, Green , Light Light Black or Violet
Advanced Black-and-White Print Mode	Yes – Requires Three-Level Black inks	Yes (Standard & Designer Editions) , Not applicable on Commercial Edition
Percentage of PANTONE PLUS Spot Colors achieved	~94%	98% Standard & Designer / 99% Commercial Edition
Printhead Nozzles	MicroPiezo® AMC™, 180 nozzles per channel	PrecisionCore, 360 nozzles per channel
Production Printing Example: Quantity Ten, 16" x 20" prints centered on 17" x 22" sheets	1:35 (hours:min)	1:13 (hours:min) Auto-Nozzle Check = periodic
Roll Feed and Roll Cutting	Optional accessory, manual cutting	Standard - power driven. high-speed built-in rotary cutter
Four-sided Borderless on Sheet Media	Yes, 4" x 6", 5" x 7", 8" x 10" and popular sizes up to 17" x 22"	Not Available. 3 mm minimum margins all edges 8" x 10" minimum sheet size
Photo Media Input Sheet Capacity: Letter / 17" x 22"	80 / 10	100 / 100
Connectivity Options	USB, Wireless and Wired 10/100 Ethernet	USB, Wired Gigabit Ethernet
SpectroProofer 17" UVS	Not supported	Yes, an option which can be purchased and installed at anytime
Available in Designer Edition with EFI Fiery eXpress	Yes	Yes
Limited Warranty ⁴	1-year advanced exchange	1-year, usually next-business-day on-site
Weight and Dimensions	43 l. 27" (W) x 15" (D) x 10" (H)	115 lb 34" (W) x 30" (D) x 16" (H) – Sturdy production printer engine

Pricing and specification subject to change

■ **Standard 1-Year Epson PreferredSM Limited Warranty**

- Free technical support Monday through Friday
- If required, support provided on-site, usually next-business-day
- Covers the printer, genuine Epson optional accessories, and software⁴

■ **Optional 1- or 2- Year Epson Preferred Plus Service Plans**

- Provides contract service coverage when the standard limited in-box warranty ends
- Can be purchased at any time while still under an Epson Preferred Limited Warranty
- Provides up to 3 years of complete coverage from Epson





■ Superior Print Quality

- The benchmark standard for 17"-wide photographic imaging and color proofing excellence
- Refined mechanism for reduced printhead maintenance

■ Epson PrecisionCore TFP Printhead

- 10-channel MicroPiezo technology for superior print performance

■ Epson UltraChrome HDX Pigment Ink Technology

- Epson's widest color gamut ink set, best Black density and print permanence
- Lower Epson 17"-wide running costs with high capacity 200 mL ink cartridges

■ Robust Media Handling

- Four media paths: roll auto-cut, high-capacity sheet cassette and two manual feed paths
- Auto-switching between roll and cassette sources

■ Supported by Industry-Leading Advanced Workflow Software

- Epson printers have broad support from Software RIP and Digital Front End developers worldwide



Replacement Printer
Cutter Blade



Replacement
Ink Maintenance Tank



SpectroProofer 17" UVS

Description	Part Number
SureColor P5000 Printer - Standard Edition	SCP5000SE
SureColor P5000 Printer - Designer Edition	SCP5000DES
SureColor P5000 Printer - Commercial Edition	SCP5000CE
Replacement Ink Maintenance Tank	T619000
Replacement Printer Cutter Blade	C12C815351
Cleaning Sheet (Pack of 5)	C13S00045
Additional 2" / 3" Roll Media Spindle	C12C811251
Replacement BorderFree Maintenance Tank	T619100
Additional 1-year Epson Preferred Plus Service	EPP49B1
Additional 2-year Epson Preferred Plus Service	EPP49B2
SpectroProofer 17" UVS	SPECTRO17UVS
X-Rite ILS30EP (upgrade from ILS20EP/EPUV)	C12C932021
Additional 1-Year Epson Preferred Plus Plan for SpectroProofer	EPPSPB1



200 mL Ink Cartridges
UltraChrome HDX LLK Ink Set Shown

Ink Cartridge	SKU
UltraChrome HDX Photo Black	T913100
UltraChrome HDX Cyan	T913200
UltraChrome HDX Vivid Magenta	T913300
UltraChrome HDX Yellow	T913400
UltraChrome HDX Light Cyan	T913500
UltraChrome HDX Vivid Light Magenta	T913600
UltraChrome HDX Light Black	T913700
UltraChrome HDX Matte Black	T913800
UltraChrome HDX Light Light Black (Standard and Designer Edition only)	T913900
UltraChrome HDX Orange	T913A00
UltraChrome HDX Green	T913B00
UltraChrome HDX Violet (Commercial Edition only)	T913D00

Specifications are subject to change without notice.

1. Ink lightfastness rating based on accelerated testing of prints on specialty media, displayed indoors, under glass. Actual print stability will vary according to media, printed image, display conditions, light intensity, humidity and atmospheric conditions. Epson does not guarantee longevity of prints. For maximum print life, display all prints under glass or lamination or properly store them.

For details see: http://www.wilhelm-research.com/epson_uchd_nr/epson_uchd_nr.html

2. This product uses only genuine Epson-brand cartridges. Other brands of ink cartridges and ink supplies are not compatible and, even if described as compatible, may not function properly.

3. 99% achievement of the PANTONE PLUS Solid coated colors is based on the use of Epson Proofing Paper White Semimatte printed with Epson UltraChrome HDX ink with Violet. PANTONE coverage may vary when printed under other conditions.

4. For details on the SureColor P5000 Limited Warranty see the full document in Manuals and Warranty section of www.epson.com/support/p5000

EPSON, Epson Stylus, MicroPiezo, PrecisionCore, SpectroProofer, SureColor, TFP, UltraChrome and HDX are registered trademarks, and EPSON Exceed Your Vision is a registered logomark of Seiko Epson Corporation. BorderFree is a registered trademark, AMC is a trademark and Epson Preferred is a service mark of Epson America, Inc. All other product and brand names are trademarks and/or registered trademarks of their respective companies. Epson disclaims any and all rights in these marks.

© Epson America, Inc. 2017 LK/RH Feb 2017