

SPECIFICATIONS

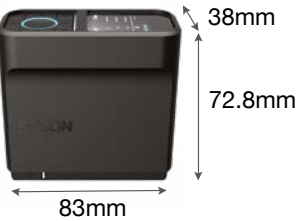
Model Number	SD-10
Colour Measurement	
Technology	Spectroscopic Device
Spectral Range	400 – 700nm
Sampling Interval	Colour Measurement
Photometric Range	10nm (Interpolation by software)
Measurement Frequency	13 times measurement per second (Scanning Mode)
Measurement Geometry	45° Circumferential / Normal Geometry (45° c : 0°)
Measurement Aperture	Φ 7.6mm
Light Source	LED (Including UV)
Measurement Conditions	<ul style="list-style-type: none">• M0: Including UV light component, ISO 13655:2017 measurement condition M0• M1e: D50 - Including UV light component, measurement conditions equivalent to ISO 13655:2017 measurement condition M1 (Measurement conditions held with a radiant power at all wavelengths from 400 to 700 nm, and power ratios in the 300 to 400 nm and 400 to 500 nm regions similar to D50)• M2: Without UV, ISO 13655:2017 measurement condition M2
Illuminants	D50 / D65 / A / F1 / F2 / F3 / F7 / F8 / F9 / F10 / F11 / F12
Observers	2° / 10°
ΔE Methods	ΔE 2000 / ΔE 1994 (Graphic Arts) / ΔE1994 (Textiles) / ΔE 1976
Calibration	White reference built in the sensor cover
Scan Length	400mm
Inter-Instrument Agreement	0.4 or less ΔE00 average 1.0 or less ΔE00 maximum
Short Term Repeatability	<ul style="list-style-type: none">• Deviation from SD-10 manufacturing standard for 12 BCRA colour tiles (D50, 2°)• Ambient temperature 23°C (73.4°F), humidity 50% 0.1 ΔE94 White
Colour difference from BCRA tile	<ul style="list-style-type: none">• Average of 10 measurements every 3 seconds on white tile (D50, 2°)• Ambient temperature 23°C (73.4°F), humidity 50% Calibration value 1.0 or less Δ E00 average
Language	
Supported Language	<ul style="list-style-type: none">• Deviation from the colour measurement value for 12 BCRA colour tiles (D50, 2°) by a measuring instrument traceable to the national metrological standard• Ambient temperature 23°C (73.4°F), humidity 50% English / French / German / Dutch / Italian / Spanish / Portuguese / Turkish / Russian / Simplified Chinese / Traditional Chinese / Korean / Japanese
Connectivity	
Interfaces	<ul style="list-style-type: none">• USB Type-C• USB 2.0 Full-Speed• BLE Bluetooth Low Energy
Memory	Number of saved data at Stand-alone (Spot Mode): 100 Colours
Environment Conditions	
Temperature (°C)	Operating: 0 °C – 40 °C (Spot Mode) / 0 °C – 35 °C (Scan Mode) Storage: -20 °C – 60 °C
Humidity	Operating: 5 – 85% (No Condensation) Storage: 5 – 85% (No Condensation)
Electrical Specifications	
Voltage	AC 220 – 240V
Power Consumption	Operating: 5V
Battery Specifications	
Battery Type	Lithium ion battery
Battery Capacity	1,860mAh
Compatible Epson Software	Epson Edge Print Pro / Epson Spectrometer App

Dimensions & Weight

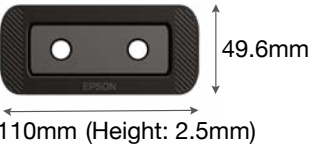
SD-10
SKU Code: B41CK17402
Weight: 190g



Main Unit Cover (Optional)
Material: Silicon
SKU Code: B42B900101



Alignment Guide (Optional)
Material: Black Part (ABS) / Transparent Part (PET)
SKU Code: B42B900201



What's in the box:

- Setup Guide*
- Storage Case
- Strap
- USB Type A to C Cable
- Certificate of Calibration

* PDF user guide is provided on the web/CD-ROM of Open-Source software license document.

©2023 Epson Singapore Pte Ltd. All Rights Reserved. Reproduction in part or in whole, without the written permission from Epson, is strictly prohibited.

EPSON is a registered trademark of Seiko Epson Corporation.

All other product and company names used herein are for identification purposes only and are the trademarks or registered trademarks of their respective owners.

Epson disclaims any and all rights in those marks. Projected images shown herein are simulations. The actual product design and contents may vary. Specifications are subject to change without notice and may vary between countries. Please check with local Epson offices for more information.

Dealer's Stamp

Information correct at time of printing.
Printed August 2023

DIGITAL COLOUR SPECTROPHOTOMETER
SD-10

EPSON

PORTABLE AND
ACCURATE COLOUR
MANAGEMENT TOOL.



Improve your printing workflow with Epson's first portable spectrophotometer.

Going digital with colour management is now easier than ever with the SD-10, Epson's first portable colour spectrophotometer. Businesses can save precious time on printing workflow with colour-matching acceleration and a user-friendly colour management system. With the lightweight device, you can easily and quickly compare colours, measure colour values, and reproduce the colour. Eliminate the hassle of analogue colour matching today!

Visit epson.com.sg/gobig for more information.



Epson Spectrometer App



Great Portability

At just 190g with an LCD and built-in battery, you can use the SD-10 anywhere, anytime.

Epson Spectrometer App

Connect to your smart devices seamlessly using the exclusive mobile app.

Hassle-free Operation

Operate the SD-10 as a standalone, going PC-less and cable-less while on the go.

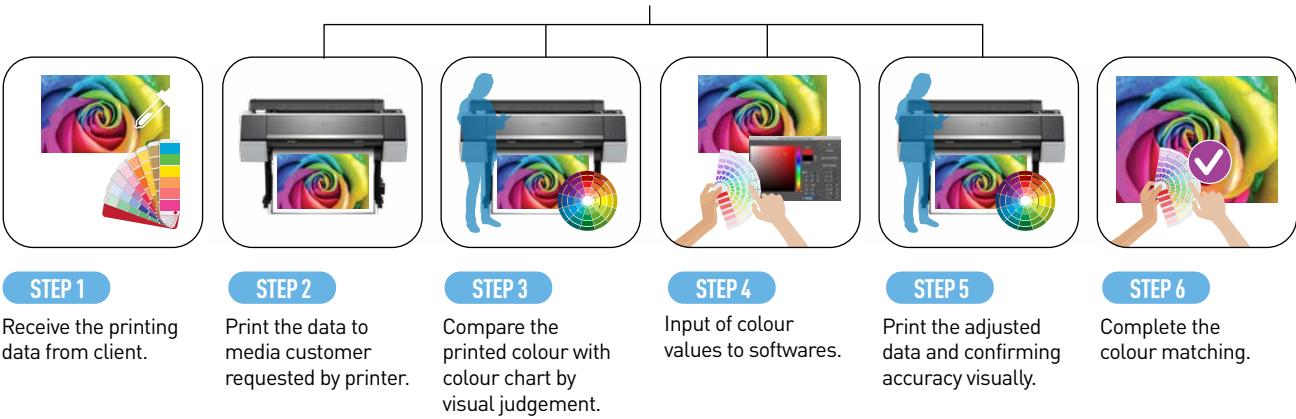
Marrying portability with precision in colour matching, the Epson SD-10 spectrophotometer measures colours with high accuracy while on the go with high reliability. Engineered to ensure the ease of colour management, the SD-10 is especially useful for designers and businesses in the printing and art industry where it is essential to have highly accurate colour matching on the prints.

Improved Colour Matching Workflow

Eliminate the time-intensive process of colour matching in an analogue workflow by going digital with SD-10. Instead of going through multiple visual checking and data adjusting, let Epson's spectrophotometer do the spot colour matching and reproduce exact colours, helping your business save on valuable time and costly manpower.

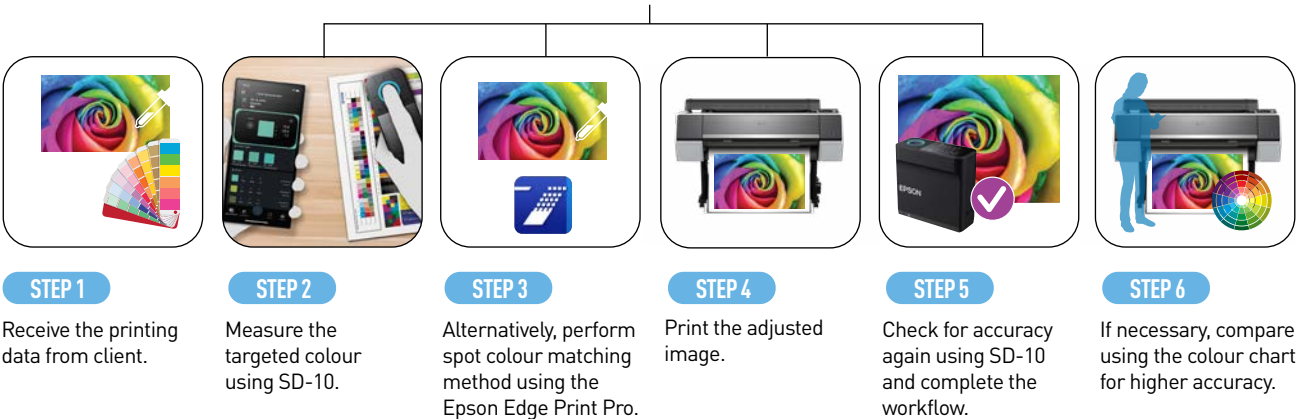
Manual colour matching workflow by traditional colour swatches

Averagely repeat this process up to 4 to 5 times



Digital colour matching workflow by SD-10

Averagely repeat this process up to 1 to 2 times



😊 Valuable time saved on colour-matching process!

*Only solid colour part can be replaced using the function of spot colour matching in Epson Edge Print Pro.

Hassle-Free Operation

Lightweight & Portable

The compact SD-10 weighs only 190g and is highly portable with its own carrying case and wrist strap.

Functional LCD Display



Network-free & PC-less Operation

Operate the SD-10 as a stand-alone unit without needing a PC or connecting to any network. The spectrophotometer is equipped with a LCD display and built-in battery for lasting operation and is easily chargeable via USB Type C cable.

Improved Usability

Main Unit Cover (Optional)

A sleek, durable shield that ensures lasting protection and adds a touch of professionalism to your workspace. Safeguard your device from dust, scratches, and spills, while preserving its pristine appearance.



Alignment Guide (Optional)

Unlock the full potential of SD-10 with the optional Alignment Guide. Achieve precise scans on an exact spot or effortlessly read colours across a larger target area.



Flexible Connectivity

Epson Spectrometer App

Connect to the mobile application via Bluetooth to store the colour data and for easy reference in the future.



SD-10 connects to smartphone via Bluetooth.

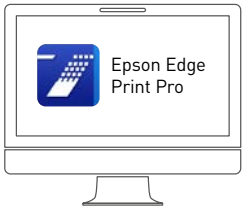


Works with Epson Edge Print Pro

Using USB Type C* or via Bluetooth#, you can easily connect to Epson Edge Print Pro to facilitate designing and printing process.



via USB Type-C* or Bluetooth#



*SD-10 can connect to PC via USB-C cable. #Requires Epson Edge Print Ver. 4.1 or later.

Intuitive Digital Design

Graphical Information

Get all the colour-related information including the measurement figures and similar colours via the SD-10 app in both graphics and text. With gamut in/out profile, print service providers can know immediately if the identified colour is printable or not.



Display Measurement Figures (L*a*b, L*C*h, LRV (Light Reflectance Value), HEX (sRGB), RGB & CMYK)



Graph Display (Gamut outer line, display gamut in/out)

Easy Colour Comparison

Colour inspection and verification is made easy as the colours can be easily and quickly compared and checked against previous measurement records.



Single Colour Comparison



Multi Colour Comparison