

# PowerLite<sup>®</sup> Ultra-short-throw 3LCD Projectors

**570**

XGA Resolution

**575W**

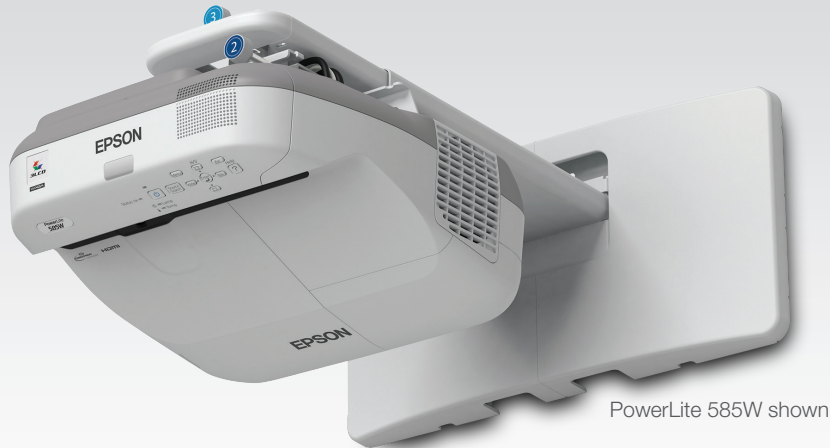
WXGA Resolution

**580**

XGA Resolution  
Ultra Bright

**585W**

WXGA Resolution  
Ultra Bright



PowerLite 585W shown

## Ultra-short-throw projectors with connectivity for the BYOD classroom.

**3x Brighter Colors<sup>1</sup>, and reliable performance** — 3LCD, 3-chip technology

**One measurement of brightness is not enough** — look for both high color brightness and high white brightness. The PowerLite 570, 575W, 580 and 585W have:

**Color Brightness** — 2700 to 3300 lumens<sup>2</sup>

**White Brightness** — 2700 to 3300 lumens<sup>2</sup>

**Amazing image quality** — available in native XGA and WXGA (widescreen) resolutions

**The ideal wall-mount installation** — get a 93" (XGA) or 100" (WXGA) image from as little as 12" away; significantly reduces shadow interference and glare

**Convenient collaboration for BYOD classrooms** — wirelessly share and compare students' work from multiple devices, simultaneously, with Moderator software<sup>3</sup>

**Manage your projector and present remotely** — easy network connectivity; software included

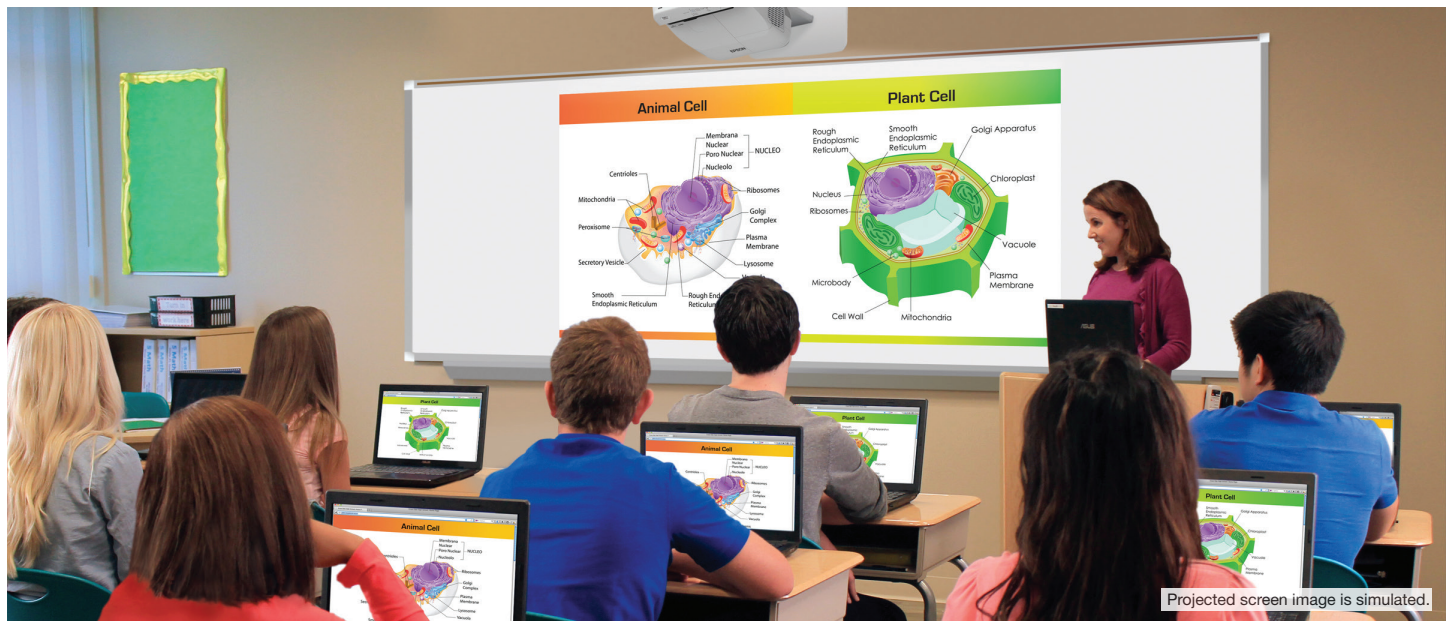
**Wireless projection** — supports iPhone<sup>®</sup>, iPad<sup>®</sup> and Android<sup>™</sup> mobile devices with the Epson iProjection<sup>™</sup> App<sup>4</sup>

**2x HDMI<sup>™</sup>** — supports multiple high-definition A/V devices, with MHL<sup>®</sup> support<sup>5</sup>

**Powerful sound to engage every student** — built-in 16 W speaker and microphone input; or, use external speakers, even in Standby Mode

**Long-life, low-cost lamp** — lasts up to 10,000 hours (570/575W) in ECO Mode<sup>6</sup>





## Ultra-short-throw projectors with connectivity for the BYOD classroom.

The perfect ultra-short-throw projectors for today's BYOD classroom, the PowerLite 570, 575W, 580 and 585W deliver a whole new level of collaborative learning. With brilliant image quality, plus advanced network connectivity and wireless performance, these projectors make it easy to share engaging lessons and control the projector remotely. Offering 3x Brighter Colors<sup>1</sup> than competitive models, Epson 3LCD projectors ensure bright, vivid lessons. Available in both XGA and larger-than-life WXGA resolutions, these projectors deliver dynamic images that are sure to captivate any classroom. They can project 93" (XGA) or 100" (WXGA) images from just 12" away. And, they feature Moderator software<sup>3</sup>, so you can easily share and compare students' work from multiple devices, simultaneously.

### Projectors at a glance



	PowerLite 570	PowerLite 575W	PowerLite 580	PowerLite 585W
Resolution:	<b>XGA (1024 x 768)</b>	<b>WXGA (1280 x 800)</b>	<b>XGA (1024 x 768)</b>	<b>WXGA (1280 x 800)</b>
Color Brightness:	<b>2700 lumens<sup>2</sup></b>	<b>2700 lumens<sup>2</sup></b>	<b>3200 lumens<sup>2</sup></b>	<b>3300 lumens<sup>2</sup></b>
White Brightness:	<b>2700 lumens<sup>2</sup></b>	<b>2700 lumens<sup>2</sup></b>	<b>3200 lumens<sup>2</sup></b>	<b>3300 lumens<sup>2</sup></b>

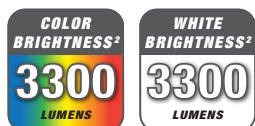
## Amazing image quality



PowerLite 570 / 575W



PowerLite 580

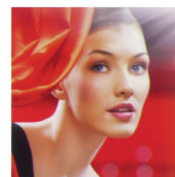


PowerLite 585W

### 3x Brighter Colors with Epson<sup>1</sup>

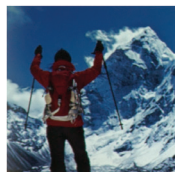
Brilliant image quality requires high color brightness (color light output), and Epson 3LCD projectors have 3x Brighter Colors than leading competitive projectors.<sup>1</sup>

One brightness measurement (lumens) is not enough. A projector's specification needs to show both high color brightness and high white brightness. If color brightness is lower than white brightness, images may be dark, dull and lose detail. If not provided, be sure to ask for a projector's color brightness specification.



#### EPSON

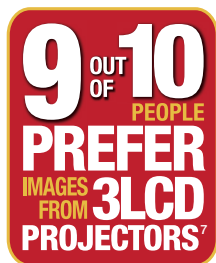
High color brightness and high white brightness



#### COMPETITOR

Color brightness significantly lower than white brightness

Actual photographs of projected images from an identical signal source. Price, resolution and white brightness are similar for both projectors (Epson 3LCD and 1-chip DLP competitor). Both projectors are set to their brightest mode.



### 3LCD — The #1 projection technology in the world

- All 3LCD projectors have both high color brightness and high white brightness
- All 3LCD projectors have 3 chips
- 25% lower power consumption for lower energy costs<sup>8</sup>
- 20 years of road-tested reliability



### Remarkable resolution for brilliant clarity and detail

Resolution defines the level of detail and depth you'll see in a projected image. It's measured as the number of pixels wide by the number of pixels high. The more pixels, the better the detail.

**1.5x more resolution than SVGA**



**SVGA (800 x 600)**

Meets basic projection needs



**XGA (1024 x 768)**

Ensures sharper detail

**2x more resolution than SVGA**



**WXGA (1280 x 800)**

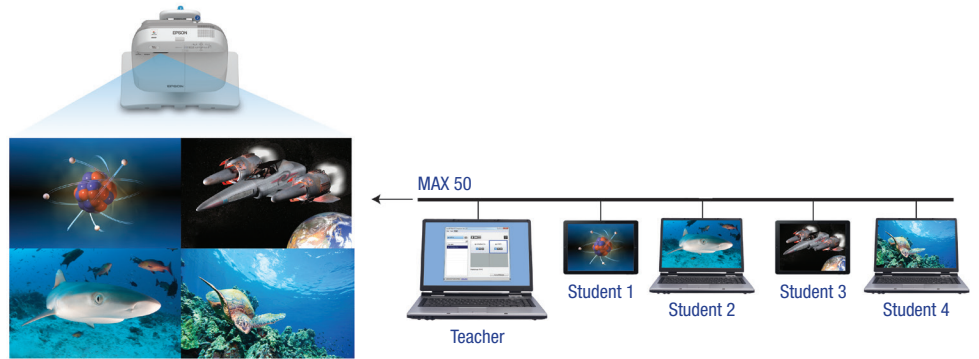
Offers high-definition and is ideal for widescreen (16:10) displays

## Classroom collaboration

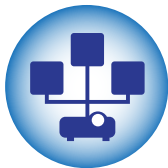
### Teaching tools

Support BYOD classroom collaboration using Epson's Moderator feature<sup>3</sup>.

- Moderator (teacher) can display up to four different device screens simultaneously and control which device screens to display
- Connect to up to 50 Windows®, Mac®, iOS® or Android devices
- Encourage and control classroom collaboration; perfect for comparing students' work side-by-side



## Advanced connectivity



EasyMP  
network  
projection



Free  
Epson iProjection App

### Networking features that take teaching to the next level

- Manage up to 1024 Epson networked projectors using the included EasyMP® Monitor software or Crestron RoomView® — saves time and money
- Update projector firmware in-house via the network, a USB cable or a USB flashdrive — eliminates the need for external service center repairs; saves time and money
- Send updates or announcements remotely to up to 1024 Epson networked projectors using the Message Broadcasting<sup>9</sup> plug-in for EasyMP Monitor
- Connect your projector to an access point to share it with the entire class, without running more cables

### Share from your tablet or smartphone

Display from your iOS or Android mobile device with the free Epson iProjection App and any nearby Epson projector.<sup>4</sup>

- Control your presentation with just a touch of the screen
- Advance through PowerPoint® or Keynote® presentations
- Zoom in and out of PDF, Excel® and Word documents
- Project Web pages and view brilliant, high-quality images



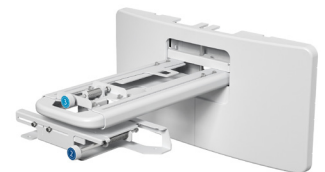
## Easy to use



### Simple Setup Suite from Epson

Epson projectors offer a suite of innovative features that ensure flexible placement and fast, easy setup.

- **2x HDMI** — supports multiple high-definition A/V devices. Compatible with the latest laptops, Blu-ray Disc® and media players
- **MHL** — the latest in connectivity<sup>5</sup>
  - Display content from your MHL-enabled smartphones, tablets and streaming devices
    - Use the projector remote to control MHL-enabled devices
    - Charge your MHL-enabled device when it's plugged into the projector
  - Offers instant access to movies, games and more
- **Quick Corner®** — this innovative feature allows you to move any of the four corners of an image independently, to adjust each corner for a perfectly rectangular picture
- **Advanced 3-in-1 USB Plug 'n Play instant setup** — instantly project audio and video from a PC or Mac via a USB connection
- **Quick, convenient control** — Instant Off® means no cool-down time required; it's ready to shut down when you are
- **Copy menu settings for multiple projector installations** — save on installation time; copy settings via a USB flash drive, USB cable or LAN
- **Flexible wall mount (included)** — easily install the projector with convenient adjustments, color-coded dials and on-screen prompts. Wide cut-outs facilitate cable management



### Easily conserve power

- **ECO Mode** — operates the projector in a lower brightness setting
- **Light Optimizer Mode** — adjusts the lamp brightness, based on the projected image
- **Auto Mode** — sensor automatically adjusts the lamp brightness, based on the room environment
- **Sleep Mode (A/V Mute)** — control your presentation; it's right at your fingertips
- **Direct Power On/Off** — power the projector on/off with the flip of a wall switch
- **Standby audio** — even when the projector is in Standby Mode, you can use the projector's internal speaker or pass audio out to an external speaker

1 Compared to leading 1-chip DLP business and education projectors based on NPD data, July 2011 through June 2012. Color brightness (color light output) measured in accordance with IDMS 15.4. Color brightness will vary depending on usage conditions.

2 Color brightness (color light output) and white brightness (white light output) will vary depending on usage conditions. Color light output measured in accordance with IDMS 15.4; white light output measured in accordance with ISO 21118.

3 Moderator feature is part of EasyMP Multi-PC Projection software.

4 Check your owner's manual to determine if a wireless LAN module must be purchased separately to enable wireless connection on your Epson projector. Epson projectors can be networked either through the Ethernet port on the projector (check model specifications for availability) or via a wireless connection. Not all Epson projectors are able to be networked. Availability varies depending on model.

5 Includes one Mobile High-Definition Link® (MHL) HDMI port.

6 PowerLite 570/575W: ECO Mode is up to 10,000 hours. Normal Mode is up to 5000 hours. PowerLite 580/585W: ECO Mode is up to 6000 hours, Normal Mode is up to 4000 hours. Lamp life will vary depending upon mode selected, environmental conditions and usage. Lamp brightness decreases over time.

7 9 out of 10 people preferred images from leading 3LCD projectors over leading 1-chip DLP business and education projectors. Leading projectors selected according to NPD data as of July 2013. Based on independent U.S. research conducted by Radius Research (July 2013).

8 Data source: ProjectorCentral.com Jan. 2013. Average of 1128 shipping models for which the manufacturers provided lumens and total power data, all resolutions and brightness levels. Energy efficiency was measured as wattage per lumen. It was measured for both 3LCD and 1-chip projectors in each of five brightness segments. 3LCD projectors averaged less required electricity per lumen in each of the five segments.

9 Works only with Epson projectors that support presentation over the network capability.

# PowerLite® Ultra-short-throw 3LCD Projectors

## Specifications

**Projection System** 3LCD, 3-chip technology  
**Projection Method** Front/rear wall mount  
**Driving Method** Poly-silicon TFT Active Matrix  
**Pixel Number**  
 570/580: 786,432 dots (1024 x 768) x 3  
 575W/585W: 1,024,000 dots (1280 x 800) x 3  
**Color Brightness<sup>2</sup> Color Light Output**  
 570/575W: 2700 lumens  
 580: 3200 lumens  
 585W: 3300 lumens  
**White Brightness<sup>2</sup> White Light Output**  
 570/575W: 2700 lumens  
 580: 3200 lumens  
 585W: 3300 lumens

**Aspect Ratio**  
 570/580: 4:3, 575W/585W: 16:10

**Native Resolution**  
 570/580: 1024 x 768 (XGA)  
 575W/585W: 1280 x 800 (WXGA)

**Resize**  
 640 x 580 (VGA), 800 x 600 (SVGA),  
 1024 x 768 (XGA/575W and 585W only),  
 1152 x 864 (SXGA), 1280 x 800 (WXGA/570 and 580 only),  
 1280 x 960 (SXGA2), 1280 x 1024 (SXGA3),  
 1280 x 768 (WXGA 60-1/570 and 580 only),  
 1360 x 768 (WXGA 60-2), 1440 x 900 (WXGA+),  
 1400 x 1050 (SXGA+), 1600 x 900 (WXGA++)

**Lamp Type** 570/575W: 215 W UHE, 580/585W: 245 W UHE

**Lamp Life<sup>6</sup>**  
 570/575W: Up to 10,000 hours (ECO Mode)  
 Up to 5000 hours (Normal Mode)  
 580/585W: Up to 6000 hours (ECO Mode)  
 Up to 4000 hours (Normal Mode)

**Throw Ratio Range**  
 570/580: 0.31 – 0.42, 575W/585W: 0.27 – 0.37

**Size (Projected Distance)**  
 570/580: 55.9" to 93.2" (0.348 to 0.597 m)  
 575W/585W: 60" to 100" (0.348 to 0.597 m)

**Keystone Correction Manual**  
 Vertical ± 3 degrees; Horizontal ± 3 degrees

**Mac Connectivity**  
 Projector is Mac compatible via USB, DVI to HDMI or VGA adapter (not included), DP to HDMI or VGA

**Contrast Ratio** Up to 10,000:1

**Color Reproduction** Up to 1.07 billion colors

## Projection Lens

**Type** No optical zoom/Manual focus

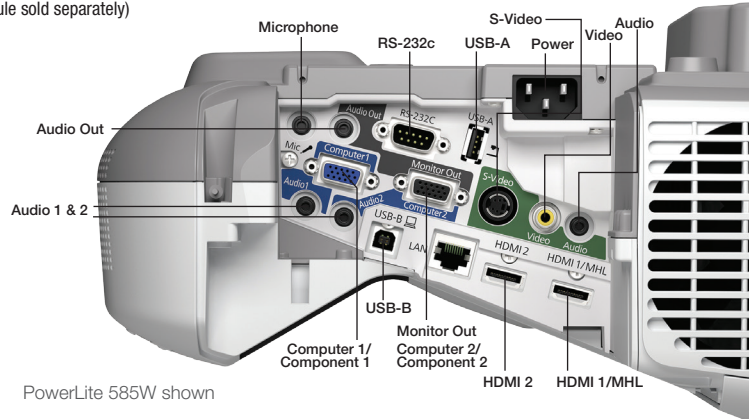
**F-number** 1.80

**Focal Length** 3.71 mm

**Zoom Ratio** Digital zoom 1.0 – 1.35

## Interfaces

**Wireless LAN Port** 802.11 b/g/n  
 (optional – module sold separately)



PowerLite 585W shown

## Other

**Display Performance**  
 NTSC: 480 lines, PAL: 576 lines (Depends on observation of the multi-burst pattern)

**Input Signal** NTSC/NTSC4.43/PAL/M-PAL/N-PAL/PAL60/SECAM

**Speaker** 16 W (mono)

**Operating Temperature** 41 ° to 95 °F (5 ° to 35 °C)

**Power Supply Voltage** 100 – 240 V ± 10%, 50/60 Hz

**Power Consumption**  
 570/575W: 333 W (Normal Mode), 239 W (ECO Mode)  
 4.3 W Standby (Communication On)  
 0.33 W Standby (Communication Off)  
 580/585W: 376 W (Normal Mode), 280 W (ECO Mode)  
 4.3 W Standby (Communication On)  
 0.33 W Standby (Communication Off)

**Fan Noise**  
 35 dB (Normal Mode), 28 dB (ECO Mode)

**Security** Kensington®-style lock provision, padlock and security cable hole, password protect function

## Dimensions (W x D x H)

Including feet: 14.4" x 14.8" x 7.6"  
 Excluding feet: 14.4" x 14.8" x 6.1"  
 Weight: 11.7 lb

## Remote Control

**Features** Source search, video, LAN, computer, USB, power, aspect, color mode, volume, e-zoom, A/V Mute, freeze, menu, page up and down, help, auto, mouse functions, user, esc

**Operating Distance** Front/rear: 19.7 ft (6 m)

## Support

**The Epson Connection<sup>SM</sup>**  
 Pre-sales support: U.S. and Canada 800-463-7766  
[www.epson.com](http://www.epson.com)

**Service Programs**  
 Two-year projector limited warranty, Epson Road Service program, PrivateLine® dedicated toll-free support and 90-day limited lamp warranty

## What's In The Box

PowerLite 570, 575W, 580 or 585W projector, wall mount, 15' power cord, 16' computer cable (VGA), projector remote control, batteries, user manual CD, projector software CDs, Quick Setup Sheet, installation guide, template sheet

## Ordering Information

### Product Name

PowerLite 570	V11H605020
PowerLite 575W	V11H603020
PowerLite 580	V11H604020
PowerLite 585W	V11H602020

### Accessories

Genuine Epson lamp	
570/575W:	V13H010L79
580/585W:	V13H010L80
Replacement air filter	V13H134A40
PowerLite® Pilot™ 2 (ELPCB02)	V12H614020
Active speakers (ELPSP02)	V12H467020
Wireless 802.11b/g/n LAN unit (ELPAP07)	V12H418P12
Quick wireless connection USB key (ELPAP08)	V12H005M08
Epson DC-06 document camera (ELPDC06)	V12H321005
Epson DC-11 document camera (ELPDC11)	V12H377020
Epson DC-12 document camera (ELPDC12)	V12H594020
Epson DC-20 document camera (ELPDC20)	V12H500020
90" Whiteboard	V12H468002
96" Whiteboard	V12H468001

Better Products for a Better Future™  
[eco.epson.com](http://eco.epson.com)



**Epson America, Inc.**  
 3840 Kilroy Airport Way, Long Beach, CA 90806

**Epson Canada Limited**  
 185 Renfrew Drive, Markham, Ontario L3R 6G3

[www.epson.com](http://www.epson.com)  
[www.epson.ca](http://www.epson.ca)

Specifications and terms are subject to change without notice. EPSON, EasyMP, Instant Off, PowerLite and Quick Corner are registered trademarks, EPSON Exceed Your Vision is a registered logomark and Better Products for a Better Future and Epson iProjection are trademarks of Seiko Epson Corporation. PrivateLine is a registered trademark, Built to Perform and Pilot are trademarks and Epson Connection is a service mark of Epson America, Inc. iPad, iPhone and Mac are trademarks of Apple Inc., registered in the U.S. and other countries. Android is a trademark of Google Inc. SmartWay is a service mark of the U.S. Environmental Protection Agency. All other product and brand names are trademarks and/or registered trademarks of their respective companies. Epson disclaims any and all rights in these marks. Copyright 2014 Epson America, Inc. CPD-40667 02/14