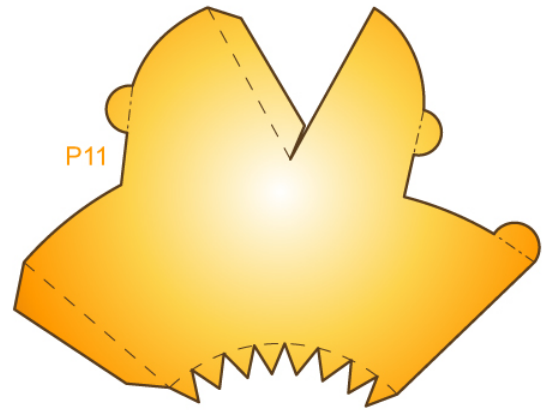


P09



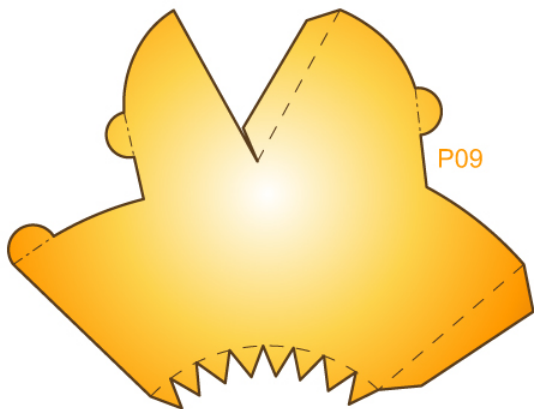
P11



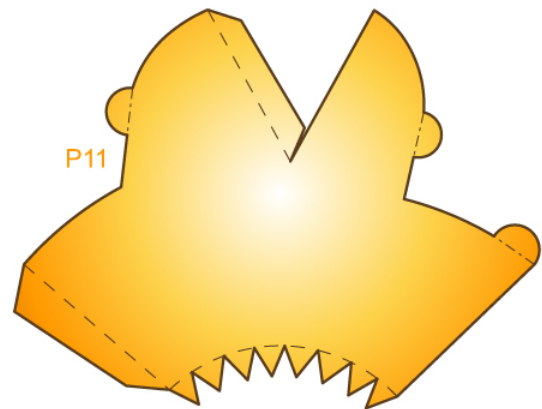
P10



P12



P09



P11



P10



P12



P13



P14



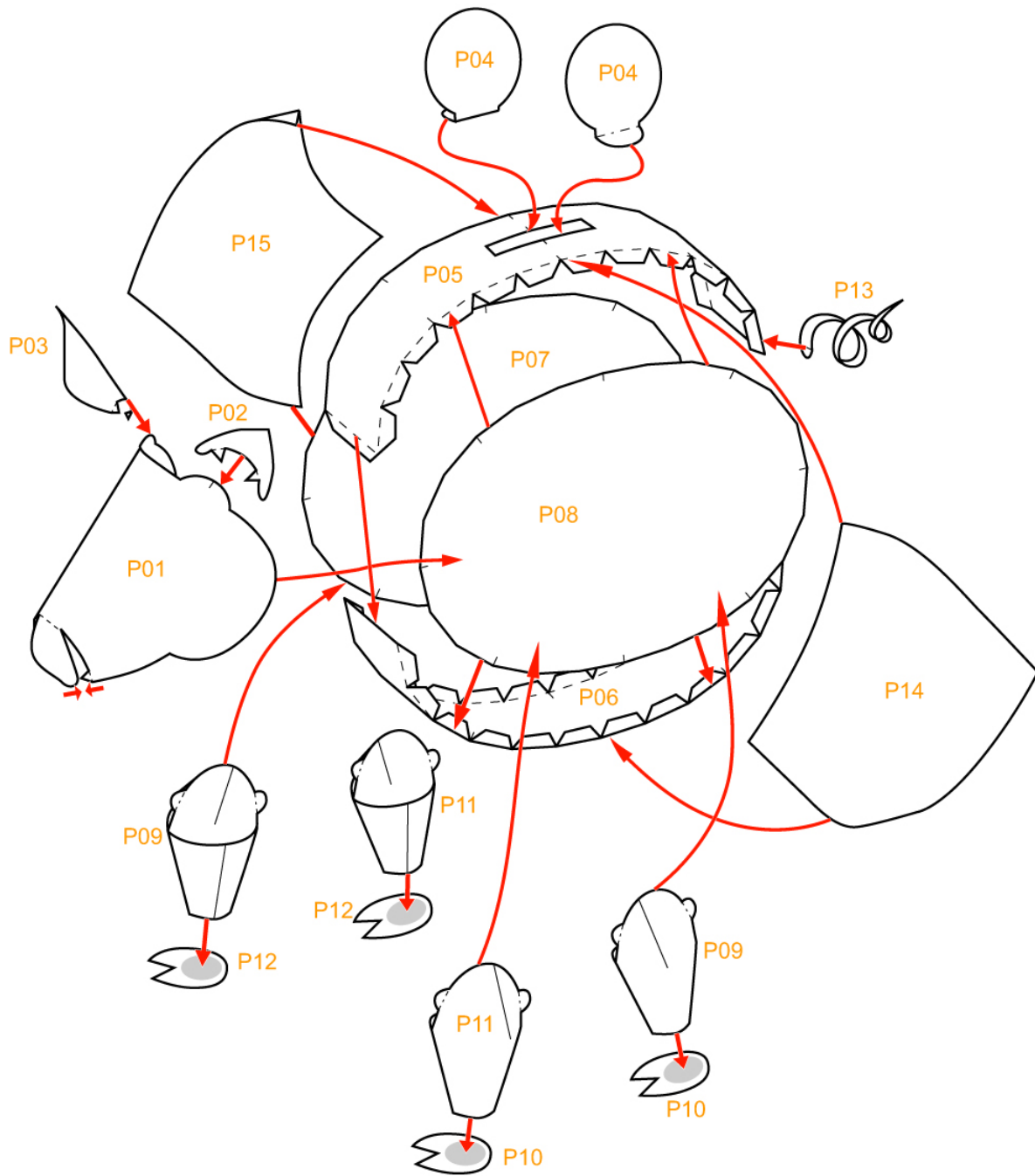

P15

組合說明

--- 山折線

--- 谷折線

✕ 切除部分



製作步驟

1



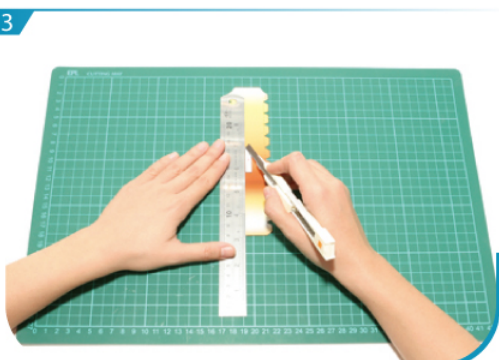
用沒有墨水的原子筆或鐵筆劃一下摺線。

2



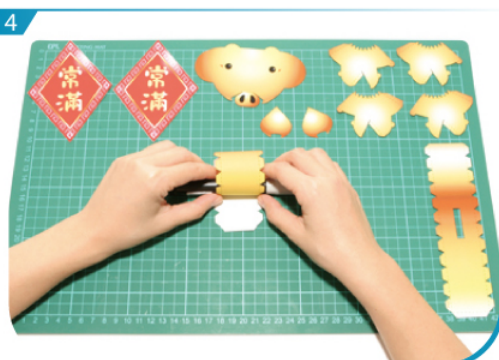
沿線剪出所有組件。為免混淆，可先在組件背面劃上記號。

3



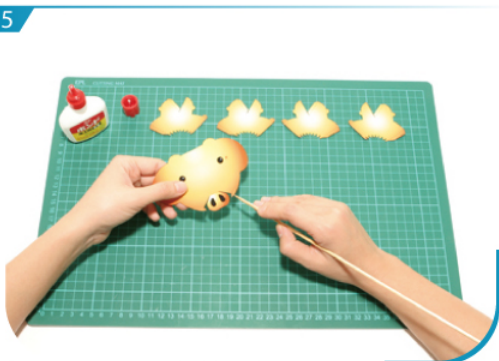
剪掉畫有「x」部份。

4



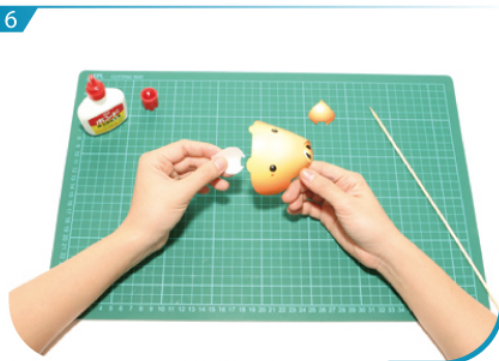
用圓柱型的筆把P01、P02、P03、P05、P06、P09、P11、P13、P14及P15先捲一下。

5



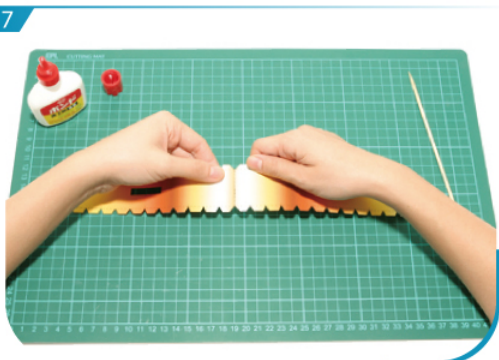
把P01、P09及P11各自摺疊貼好。

6



將P01、P02及P03黏合成為頭部。

7

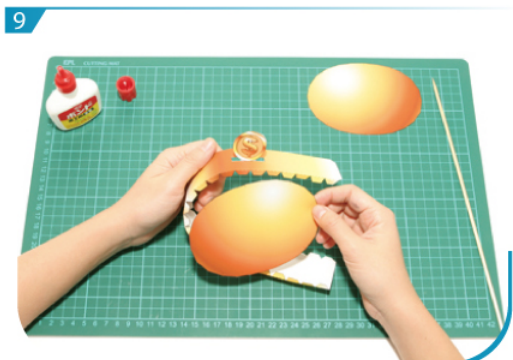


把P05及P06的一端貼合。

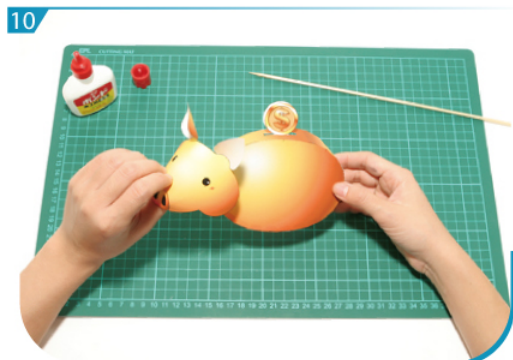
8



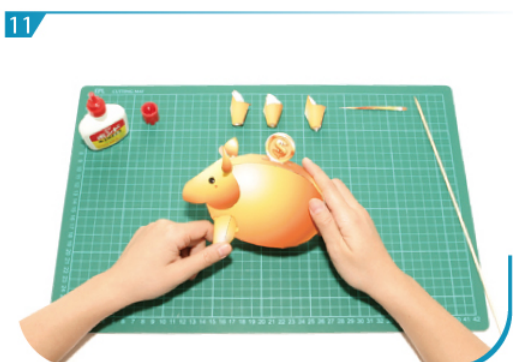
按組合說明，再將P04及P05黏合。



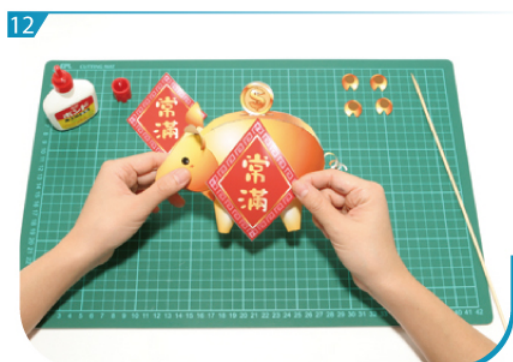
9 再把P05、P07及P08黏合成為身體。



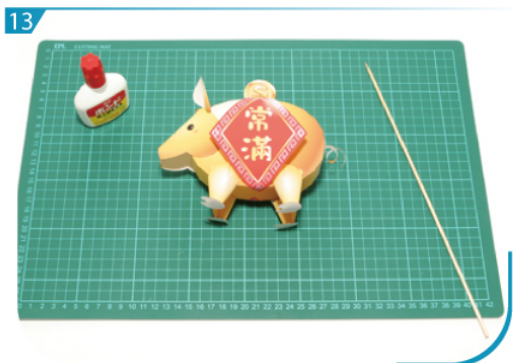
10 把頭及身體部份黏合。



11 按組合說明，再把P07、P09、P11及P13黏合。



12 按組合說明，最後把P07、P10、P12、P14及P15貼於身體上。



13 賀年豬即時完成。