






# FASTER, MORE DEPENDABLE HIGH VOLUME SCANNING.



With speeds of up to 130ipm, increased paper capacity and seamless workflow integration with Document Capture Pro, the WorkForce DS-860 is the ideal solution for businesses that demand the best performance in high volume scanning. The scanner is also highly durable with an improved daily duty cycle rating of 6,000 pages. Its new compact design allows a comfortable fit in any office environment.



-  Scan Up to A3
-  Speed Up to 130 ipm
-  OCR
-  One-pass Duplex Scanning
-  Ethernet\*

## ENGINEERED FOR BUSINESS

### Greater Speed and Durability

Scanning speeds of up to 65ppm (simplex) and 130ipm (one-pass duplex) with daily duty cycle of 6,000 pages.

### Automatic Size Recognition

Scan multiple documents of different sizes in a single batch without having to sort them out first.

### Easy Job Settings

Assign up to nine custom job settings to the scanner button for better work efficiency.



\*Optional Network Interface Unit required for Ethernet connection

The WorkForce DS-860 raises the bar for business scanners with its superb speed and high daily duty cycle of 6,000 pages. Its compact design houses smart features such as a large 80-sheet ADF, multi-size document scanning and even the ability to scan folded A3 documents in one pass with auto-stitching. Optional network support allows the scanner to be easily shared across your workgroup for more productivity gains.

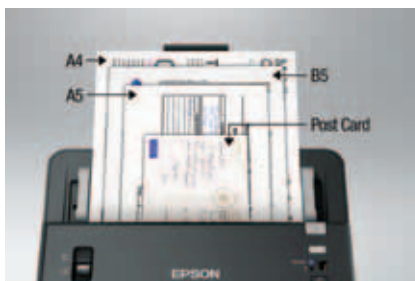


### Greater Speed and Durability

Designed for fast, high volume scanning, the DS-860 features an 80-sheet Automatic Document Feeder and scans at up to 65ppm/130ipm at 300 dpi in one-pass duplex. Its high daily duty cycle of 6,000 pages provides the robust reliability that businesses need.

### Automatic Size Recognition

Place documents of different sizes ranging from A6 to A4 in the middle of the feeding tray and the DS-860 will automatically detect and scan everything in the correct size, all in a single batch.



### Easy Job Settings

With Document Capture Pro, assign up to nine customised job settings to the scanner job button to carry out scan jobs more efficiently.



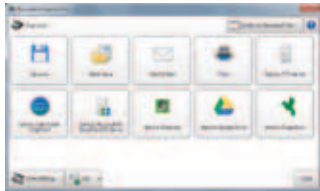
## Document Capture Pro V1.6 Premium\* (Windows Only)



Easily scan, view, edit, save and transfer scanned documents with this software. Barcodes, characters, blank pages and forms can be optically recognised to sort scanned documents into different files and/or folders. A size limit can be set to separate scanned documents into different files.

Post-scan destinations, including scan-to-print, email, Windows™ Public Folder, FTP, Web Folder, and Scan-to-Cloud services such as Microsoft® SharePoint Server, Evernote®, Google® Docs and SugarSync are easily accessible through the software. With its built-in OCR capability, you can convert your documents into searchable PDFs and editable Microsoft Office formats (.docx, .xlsx, .pptx). For easy tracking of your scan jobs, you can also generate a log of your scan history.

Document Capture Pro allows you to manage up to 30 jobs, including assigning scan jobs to the optional Network Interface Unit.



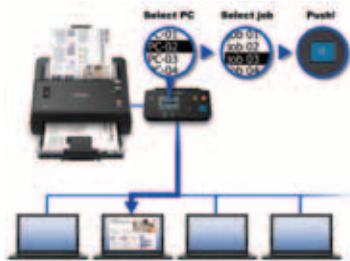
The new Document Capture Pro includes a new Simple View that allows you to easily select from various output destinations.

\*Available via web-download.

## Optional Network Support

With the optional Network Interface Unit, the DS-860 scanner can be shared with multiple users across your network.

Users with Document Capture Pro (for Windows) can assign up to 30 customisable jobs to the Network Interface Unit for push scanning.



## Smooth and Reliable Performance

Two key technologies are integral to the ability of the DS-860 to deliver trouble-free, peak performance:



### Separation Roller

This device reliably separates and feeds each page into the scanner, ensuring stable and continuous scanning for large batch requirements.



### Ultrasonic Double Feed Detection

This in-built detector ensures that every page is scanned by sensing if more than a single page has been accidentally fed into the scanner. In this occurrence, it will alert the user to rectify the issue before continuing.

## Compact Design

With a design that is 40% smaller and 20% lighter than the previous generation, the compact DS-860 fits comfortably into just about any office environment.

## A3 Scanning Without Carrier Sheet

A3 size documents can now be scanned without a carrier sheet. Simply switch the scanner to non-separation mode, and with the automatic stitching function in Epson Scan, both halves of the image will be reproduced as an entire image.



## Powerful and Comprehensive Epson Scan Features

The Epson Scan suite of functions includes numerous useful and innovative capabilities including the following highlights:

### PDF/A-1b (ISO) Compliant Files

Archive your digital documents for long term storage and visual reproduction with embedded fonts.

### Power Off Timer Setting

Set an optimum activation time for Power Off to allow for lower energy consumption.

### Colour Enhancement & Colour Dropout

Remove or enhance the visibility of ink signatures such as "Confidential" and "Urgent" stamps by choosing from one of the preset colours (red, green, blue, pink, purple, yellow, orange or all colours except black). Alternatively, you can select up to 5 colours of your choice and choose between "Selected Colour" or "Except Selected Colour" to dropout or enhance with a single scan.



## PARTNERS IN PERFECTION



### Epson AcuLaser™ C500DN Colour Laser Printer

AcuLaser C500DN delivers high volume, high quality colour print runs with finishing options, as well as energy and toner saving modes for greater cost savings.



### Epson EB-1410Wi Projector

The EB-1410Wi ultra short-throw projector delivers brilliant widescreen, interactive presentations with 3,100 lumens of Colour Brightness and White Brightness.

<b>MODEL NUMBER</b>	<b>DS-860</b>		
<b>Scanner Type</b>	A4 sheet-fed, one-pass duplex colour scanner		
Sensor	Contact Image Scanner (CIS)		
Light Source	RGB LED		
Optical Resolution*1	600 x 600 dpi		
Output Resolution	75 – 1,200 dpi (in 1 dpi increments)		
Min. Document Size	52 x 50.8mm (2.05" x 2.0")		
Max. Document Size	215.9 x 3048mm (8.5" x 120")		
Supported Paper Weight	40 – 210g/m <sup>2</sup>		
ADF Capacity	80 sheets (80g/m <sup>2</sup> )		
<b>Scanning Speed*2</b>	<b>Colour (24-bit)</b>	<b>Grey (8-bit)</b>	<b>Mono (1-bit)</b>
Resolution	Simplex / Duplex	Simplex / Duplex	Simplex / Duplex
200 dpi	65ppm / 130ipm	65ppm / 130ipm	65ppm / 130ipm
300 dpi	65ppm / 130ipm	65ppm / 130ipm	65ppm / 130ipm
400 dpi	9ppm / 18ipm	40ppm / 80ipm	40ppm / 80ipm
600 dpi	7ppm / 14ipm	30ppm / 60ipm	30ppm / 60ipm
Daily Scan Volume	6,000 pages / day		
Multi-Feed Detection	Ultrasonic Sensor		
Driver	Epson Scan TWAIN Driver, ISIS Driver		
Interface	USB 2.0 Hi-Speed, Ethernet (with optional Network Interface Unit)		
Supported Platforms			
Epson Scan Twain Driver	Windows XP / Vista / 7 / 8 / 8.1 / Server 2003 / Server 2008 / Server 2012		
ISIS Driver	Windows XP / Vista / 7 / 8 / 8.1		
<b>Electrical Specifications</b>			
Rated Voltage	AC 220 – 240V		
Rated Frequency	50 – 60Hz		
Power Consumption			
Operating	Approx. 42W		
Ready	Approx. 8W		
Sleep	Approx. 1.6W		
Off	< 0.4W		
<b>Environmental Conditions</b>			
Temperature			
Operating	5 – 35°C		
Storage	-25 – 60°C		
Humidity			
Operating	10 – 80% (No condensation)		
Storage	10 – 85% (No condensation)		
<b>Driver and Bundled Software</b>			
	Epson Scan v5.3		
	ISIS Driver		
	Document Capture Pro (Windows only)		
<b>Options / Consumables</b>	<b>Order Code</b>	<b>Durability</b>	
Network Interface Unit	B12B808461	-	
Roller Assembly Kit	B12B813581	200,000 scans	
Carrier Sheet	B12B813431	3,000 scans	

**Dimensions & Weight**

**DS-860**  
**Weight:** 4kg (8.8lb)



\*1 Scanning resolution as defined by ISO14473.  
\*2 Based on A4 sized scans.



© 2014 Epson India Pvt. Ltd. All Rights Reserved.  
Reproduction in part or in whole, without the written permission from Epson, is strictly prohibited. EPSON and EXCEED YOUR VISION are registered trademarks of Seiko Epson Corporation. All other products names and other company names used herein are for identification purposes only and are the trademarks or registered trademarks of their respective owners. Epson disclaims any and all rights in those marks. Print samples shown are simulations only. Specifications and product availability are subject to change without notice and may vary between countries. Please check with local Epson offices for more information.

Information correct as at January 2018

**EPSON INDIA PVT. LTD.**

12th Floor, The Millenia, Tower A, No.1,  
Murphy Road, Ulsoor, Bangalore - 560 008.  
Tel: 080-30515000 Fax: 080-30515005

**Regional Offices:**

Ahmedabad - 3314 8500/01, Chennai - 3967 7500, Cochin - 4012 315,  
Coimbatore - 98942 19200, Jaipur 96808 52132, Kolkata - 6500 9370/77,  
Mumbai - 3079 8200, New Delhi - 3312 0300/01,



**Epson Helpline:**

For product info or service - 1800 425 0011  
For service - 1860 3000 1600 (9AM - 6PM) (Mon - Sat)

[www.epson.co.in](http://www.epson.co.in)

Dealer's Stamp