

**Gift Redemption Procedure:**

1. Register warranty online: <https://www3.epson.com.hk/myepson/registerselectusage.html>
2. Customers have to redeem gift(s) with following documents within 30 days from date of purchase at redemption center
  - a) Invoice copy of purchased products
  - b) Photo of serial number sticker on product body
  - c) Usage history sheet (Apply to WF-7721, L5190 and L6190 only)

Serial number sticker on product body sample

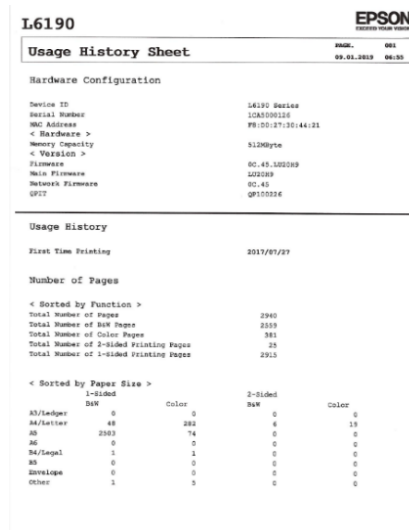


Serial Number

OR

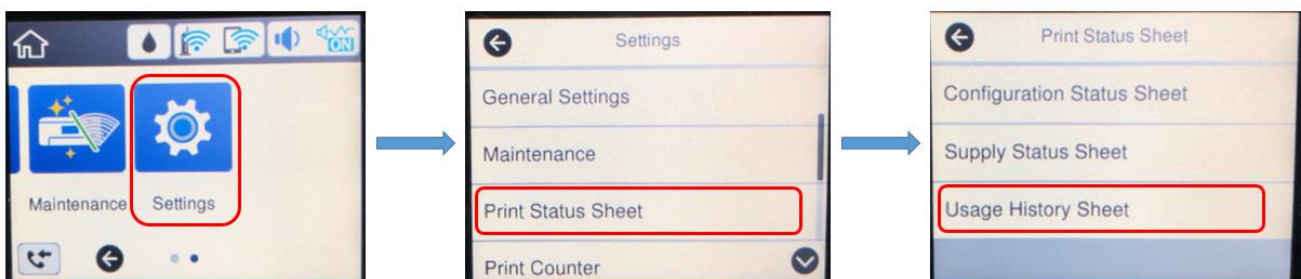


Usage history sheet sample



Steps to print usage history sheet

Settings > Print Status Sheet > Usage History Sheet



Redemption Center

Address: Unit 715-723, 7/F, Trade Square, 681 Cheung Sha Wan Road, Kowloon, Hong Kong  
(Cheung Sha Wan MTR Station Exit B)

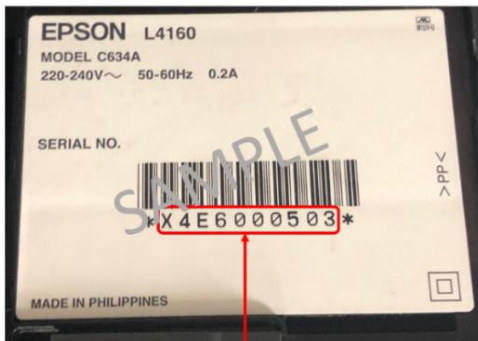
Business Hours: Monday to Friday, 10am to 6pm (Close on Saturdays, Sundays and Public Holidays)

Hotline: (852) 2827 8711

**禮品換領程序：**

1. 進行網上保養登記：<https://www3.epson.com.hk/myepson/registerselectusage.html>
2. 於購買日期起計 30 天內憑以下完整資料到換領中心換領：
  - a) 購買產品之單據副本
  - b) 機身上之機身編號貼紙照片
  - c) 使用量歷史資料表

機身編號貼紙樣本



機身編號

或

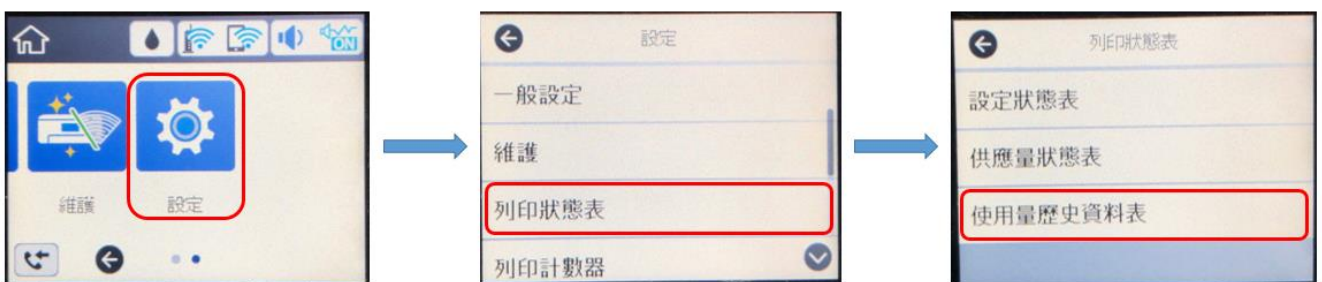


使用量歷史資料表樣本

I6190		EPSON	
<b>Usage History Sheet</b>		DATE:	09-01-2019 06:50
<b>Hardware Configuration</b>			
Device ID	I6190 Series		
Serial Number	128300026		
MAC Address	F8:00:27:30:44:21		
< Hardware >			
Memory Capacity	512MByte		
< Version >			
Firmware	0C.43.102009		
Main Firmware	L22C09		
Network Firmware	00.45		
UPIC	0F10026		
<b>Usage History</b>			
First Time Printing	2017/07/27		
<b>Number of Pages</b>			
< Sorted by Function >			
Total Number of Pages	2340		
Total Number of B&W Pages	2039		
Total Number of Color Pages	301		
Total Number of 2-Sided Printing Pages	23		
Total Number of 1-Sided Printing Pages	2315		
< Sorted by Paper Size >			
1-Sided		2-Sided	
B&W	Color	B&W	Color
A3/Ledge	0	0	0
A4/Letter	49	282	4
A5	2363	74	0
A6	0	0	0
A6/Ledge	1	1	0
A5	0	0	0
Envelope	0	0	0
Other	1	0	0

使用量歷史資料表列印步驟

設定 > 一般設定 > 使用量歷史資料表



換領中心

地址：香港九龍長沙灣長沙灣道 681 號貿易廣場 7 樓 715-723 室 (長沙灣港鐵站 B 出口)  
 辦公時間：星期一至五 10:00am - 6:00pm (星期六、星期日及公眾假期休息)  
 查詢熱線：2827 8711