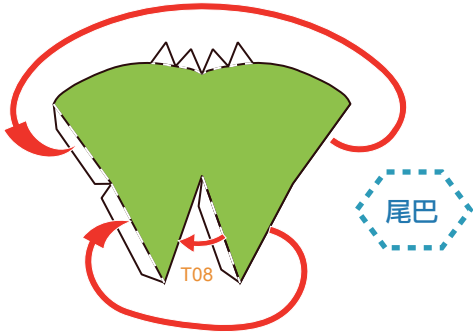
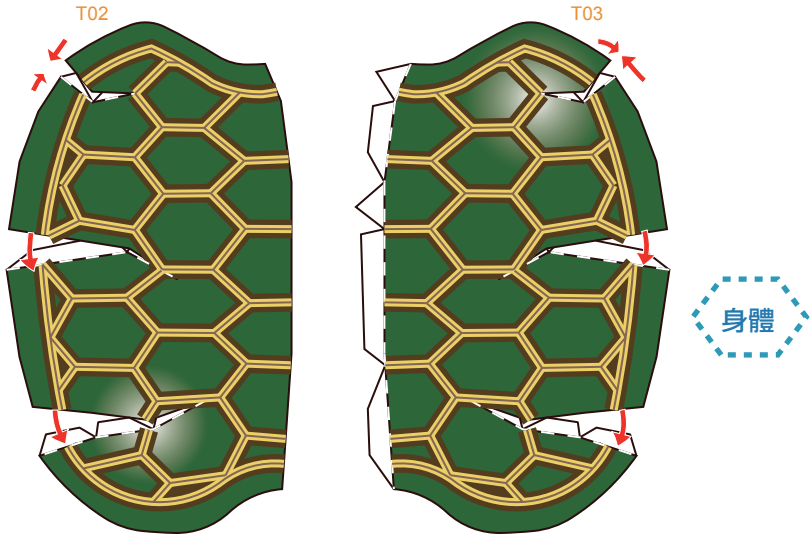
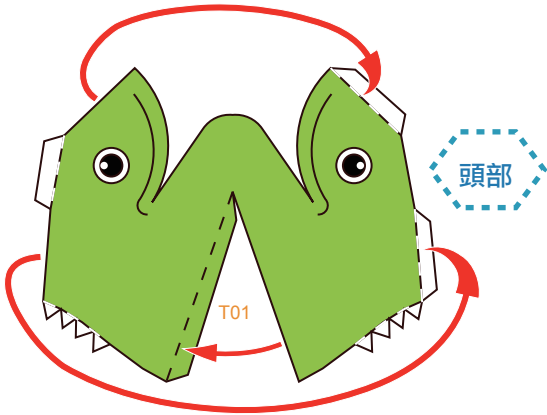
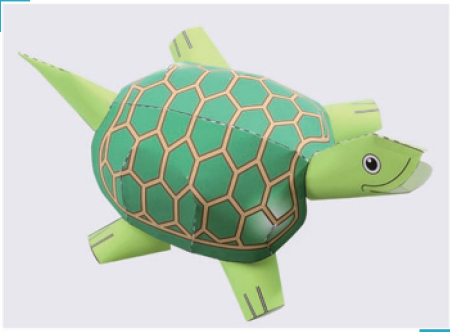


組合說明

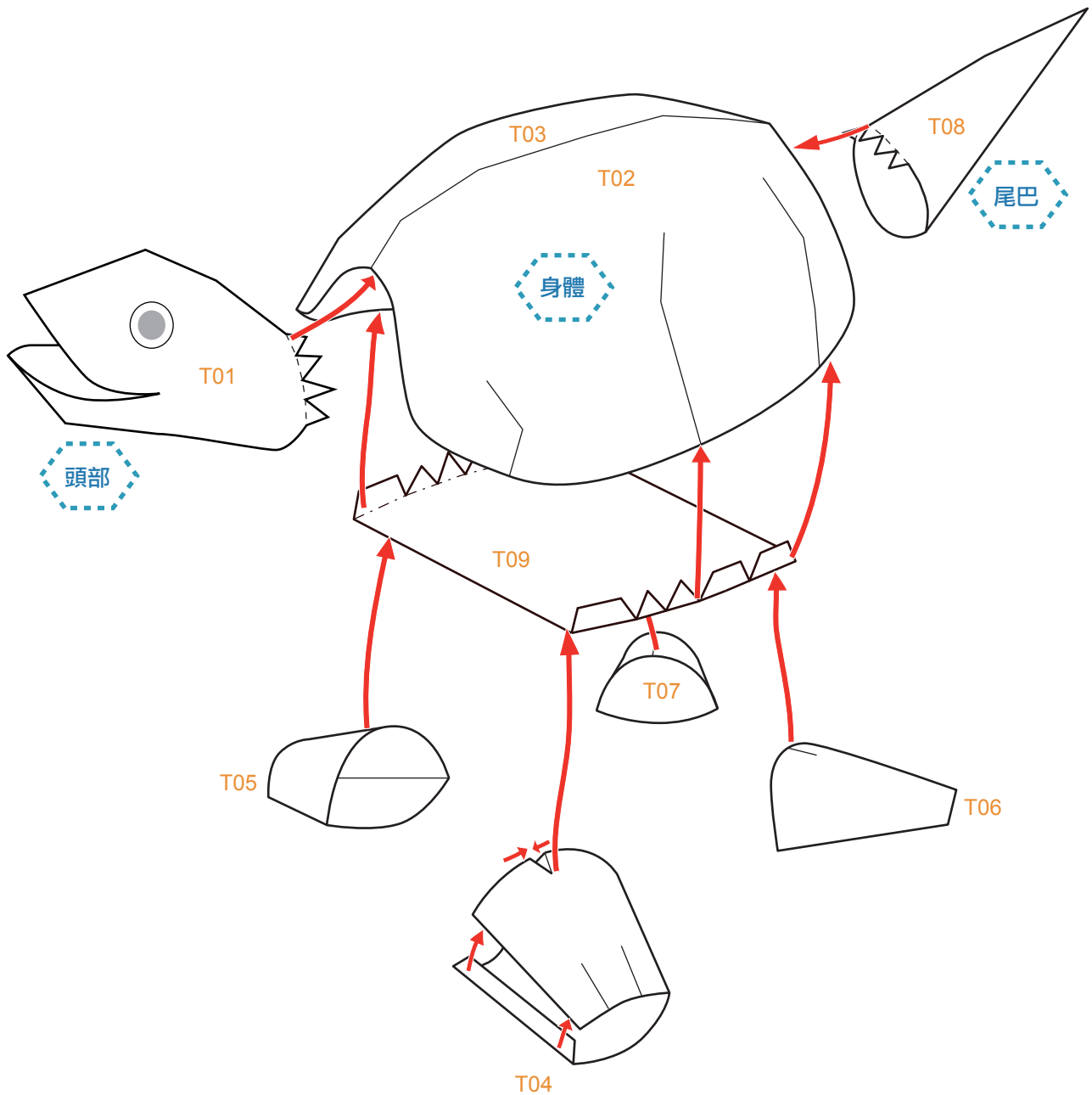
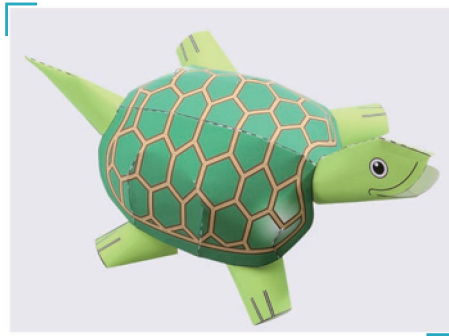
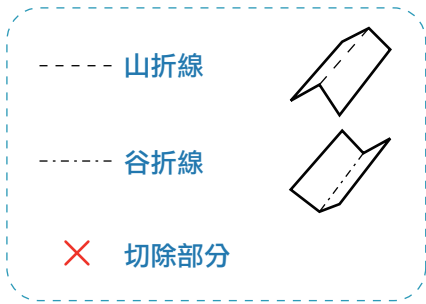
山折線

谷折線

✕ 切除部分



組合說明



基本步驟

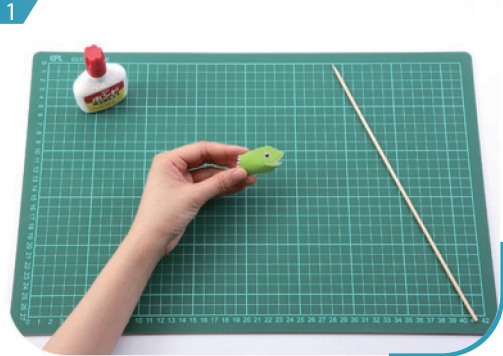


用沒有墨水的原子筆或鐵筆劃一下摺線。



沿線剪出所有組件。為免混淆，可先在組件背面劃上記號。

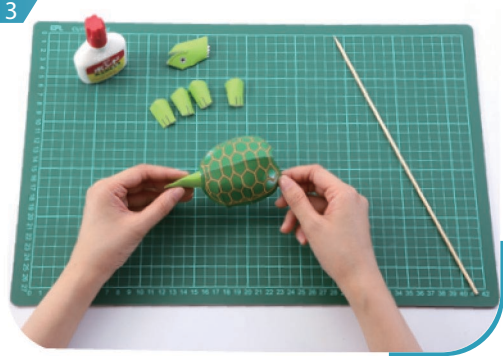
製作步驟



將T01貼好，形成頭部。



將T02 至T08各自摺疊貼好。



將T02 - T09按組合說明貼好，形成身體。



將頭部及身體黏合，即成一隻生動的烏龜！