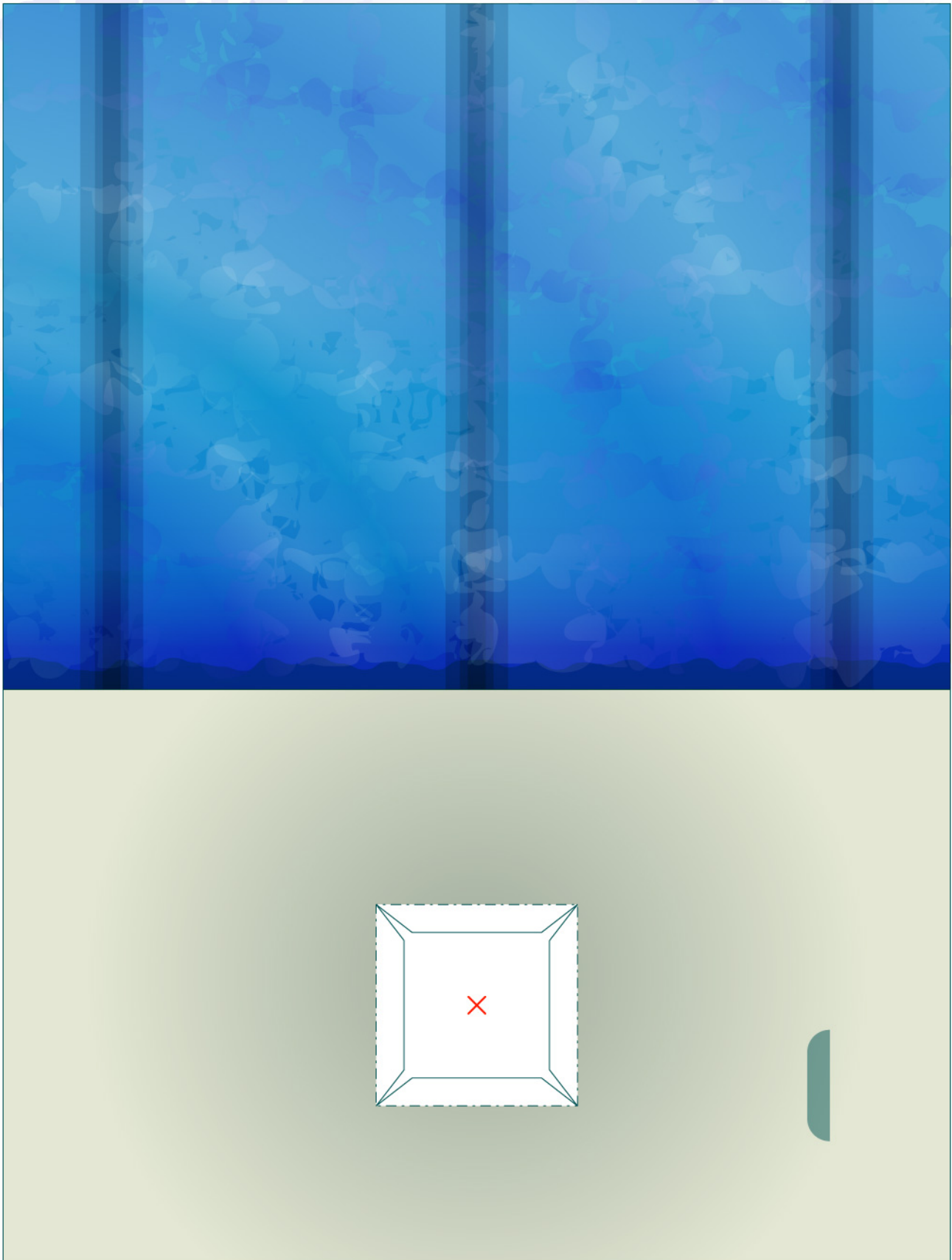
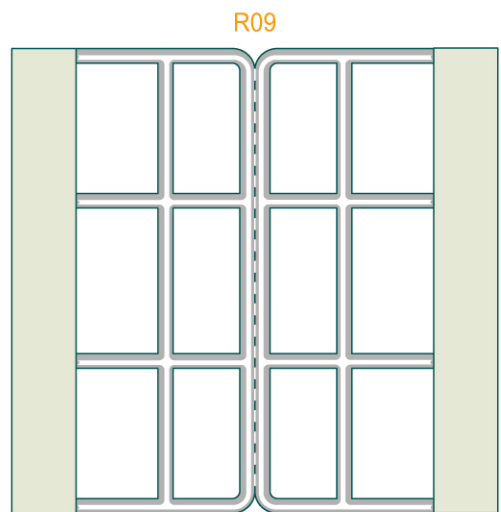
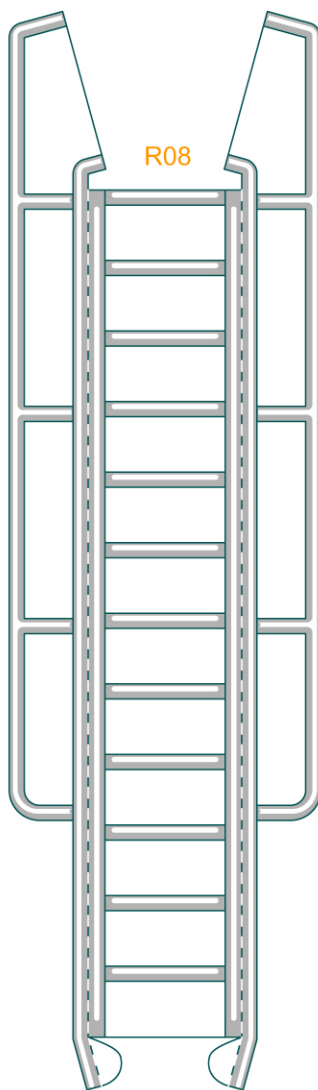
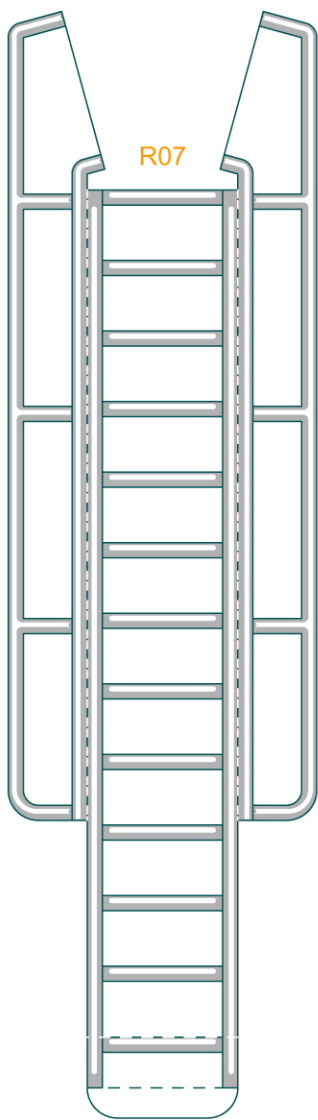
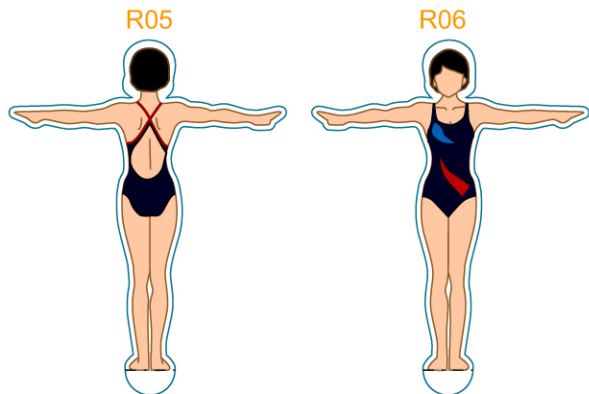




R04



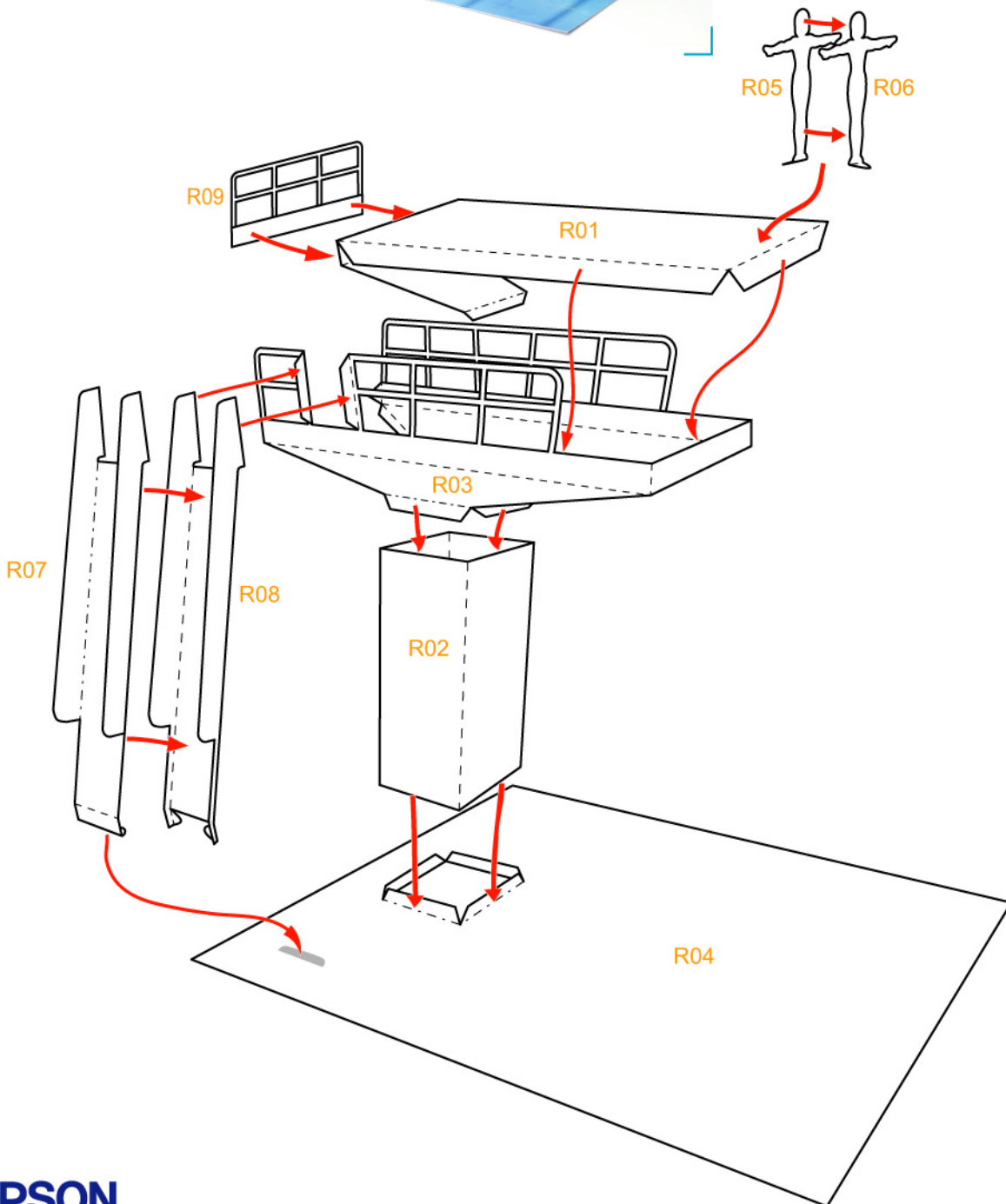
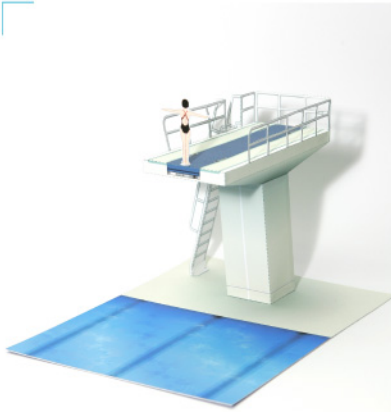
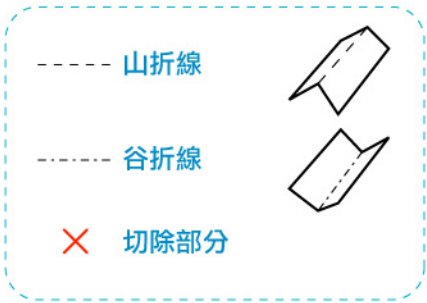


組合說明

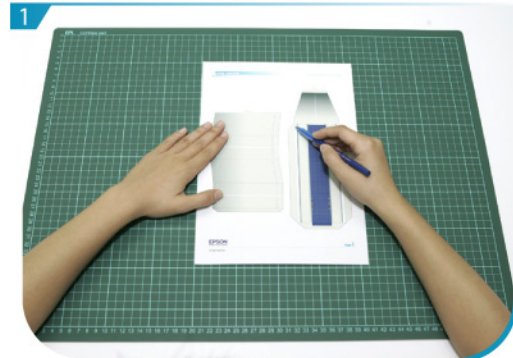
--- 山折線

--- 谷折線

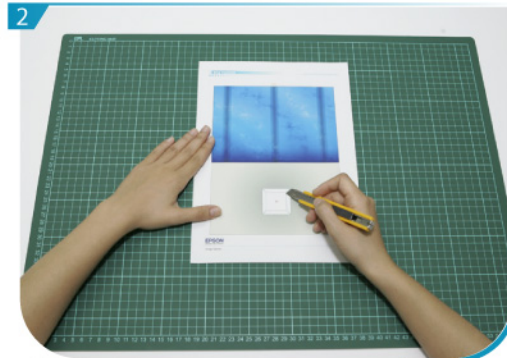
✗ 切除部分



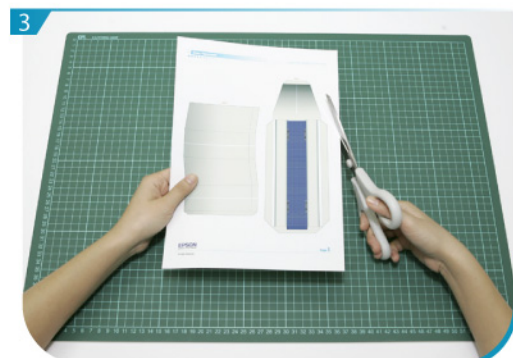
製作步驟



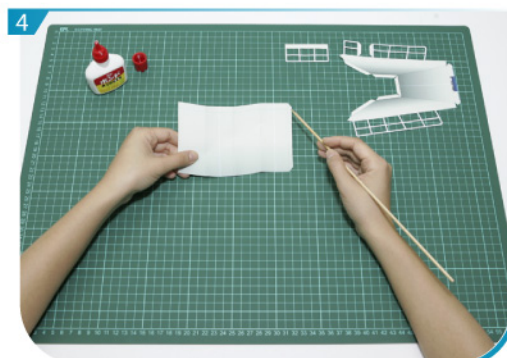
用沒有墨水的原子筆或鐵筆劃一下摺線。



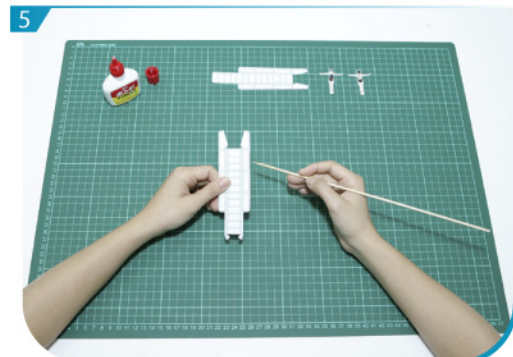
剪掉畫有x部份。



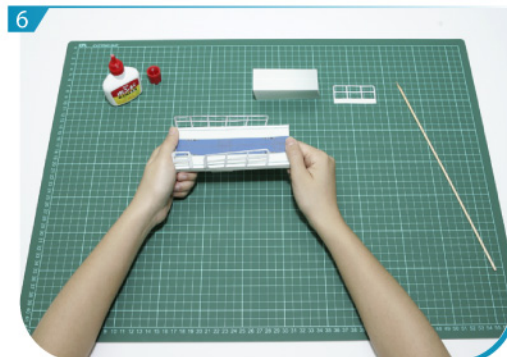
沿線剪出所有組件。為免混淆，可先在組件背面劃上記號。



將R02、R03及R09各自摺疊貼好，並剷通R03及R09待用。



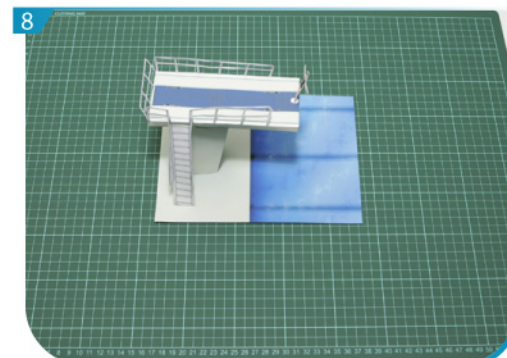
把R05及R06黏合待用；再把R07及R08黏合待用。



再將R01、R02、R03及R09黏合成為跳水台。



最後按組合說明，將R01貼於R04上，再把R05及R07貼上。



精彩的跳水項目即時完成。