

## A FAST AND RELIABLE A3 SCANNING SOLUTION.



Epson A3-sized WorkForce scanners deliver blazing fast scanning performance at up to a maximum of 70ppm/140ipm. Bundled with Document Capture Pro software which offers Scan-to-Print, Scan-to-Cloud, email and FTP, document management becomes a breeze.



Scan  
up to A3



Speed up to  
140 ipm



OCR



Ethernet



Power  
Savings



DS-50000  
Flatbed



DS-60000  
Flatbed with ADF  
40ppm/80ipm



DS-70000  
Flatbed with ADF  
70ppm/140ipm

## ENGINEERED FOR BUSINESS

### High Speed Duplex Scanning

Increase your productivity with high speed one-pass duplex scanning at up to 140ipm.

### Reliable and Convenient ADF

200-sheet high capacity ADF with ultrasonic sensor to prevent double-feeding, with settings for standard or thin paper scanning.

### Optional Network Support

With this option, users can share the scanner by using their PC or scan directly through the network.

WorkForce series scanners excel in delivering exceptional scanning performance and reliability. A3 documents, books and odd-sized objects are scanned at blazing fast speeds of up to 80ipm on the DS-60000 and 140ipm on the DS-70000.



### High Speed Duplex Scanning

The DS-60000 and DS-70000 scan with impressive speed in both simplex and one-pass duplex modes, resulting in significant improvement in office productivity.

**Scanning speed:**

**DS-60000:** 40 ppm (simplex), 80 ipm (one-pass duplex)

**DS-70000:** 70 ppm (simplex), 140 ipm (one-pass duplex)



### Reliable and Convenient ADF

High-capacity 200-sheet ADF readily accepts a wide variety of standard or thin paper documents\*. It is fitted with an ultrasonic sensor which prevents double-feeding and alerts users in the event of a mis-feed.



\* Paper Document Size < A6 = 60-190gsm; All other sizes = 50-128gsm

## Optional Network Support

With optional network interface panel, scanners can be shared amongst a work group without the need for USB connections. Users can easily select desired PC within the network via Document Capture Pro application installed on Client or Server PC.



Easy navigation of job settings with LCD panel on network interface panel.

## High Durability and Endurance

WorkForce scanners are designed to support the needs of busy offices and workgroups. DS-60000 is rated for a high daily duty cycle of 5,000 pages, while the DS-70000 boasts an even higher rating of 8,000 pages per day.

## Easy File Management



WorkForce scanners come bundled with professional software that allows you to easily manage your scanned files.

### Document Capture Pro (Windows only)

Easily scan, view, edit, save and transfer scanned documents. It can optically recognise barcodes, characters and blank pages in scanned documents to separate sections into different folders. It also provides quick access to post-scan destinations, including Scan-to-Print, email, Windows™ Public Folder, FTP, Web Folder, and Scan-to-Cloud services such as Microsoft® SharePoint Server, Evernote® and Google® Docs™. Document Capture Pro also supports up to 30 customisable job settings.



### Epson Event Manager (Mac only)\*

Facilitates easier regular scanning on Mac computers with 1 pre-defined and 10 customisable jobs.

\*This application supports USB only. Network option is not supported.

### ABBYY FineReader\*

This OCR software enables searchable content on your scanned PDFs for greater productivity. Asian languages such as Traditional Chinese, Simplified Chinese and Japanese are supported.

\* Version 9 for Windows, Version 8 for Mac OS X.

## Saves Time, Money and the Environment

WorkForce A3-series scanners are equipped with energy-saving LED light sources that require zero warm-up time. The result is instantly responsive scanning with lower power consumption.

## Fast and Flexible A3 Scanning

The flatbed scanner lets you quickly and easily scan A3-sized and wide-format documents such as maps, drawings, or large bound books and even odd-shaped articles. Images, graphics and text are captured with amazing clarity and accuracy.

### High Quality and High Speed

With its high-resolution 1200 dpi CCD sensor, images, graphics and text are captured with amazing clarity and accuracy. Fast scanning speeds at 300dpi deliver quicker results over other scanners in its class.

### Book Spine Correction

Scans are corrected for shadow and curvature around book spines.



## Powerful and Comprehensive Epson Scan Features

The Epson Scan suite of functions includes numerous useful and innovative capabilities including the following highlights:

### PDF/A-1b (ISO) Compliant Files

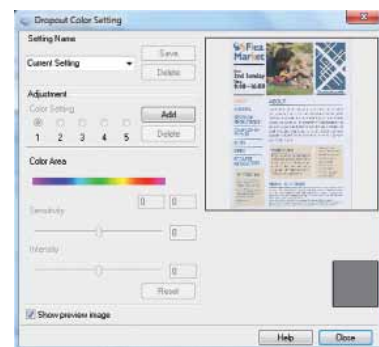
Stores original font size and maintains scans as an original copy.

### Power Off Timer Setting

Save power consumption by programming the scanner to Power Off after being idle for a set time.

### Colour Enhancement & Colour Dropout

Users can pick one of the preset colours (red, green, blue, pink, purple, yellow or orange) or use customised settings to remove or enhance the visibility of ink signatures, "Confidential" and "Urgent" stamps. This feature can also enhance or dropout multiple colours (max. 5) with one pass.



## PARTNERS IN PERFECTION



### WorkForce Pro WF-7011

Improve your workgroup productivity with the WorkForce WF-7011 networkable printer that produces stunning printouts for spreadsheets, newsletters, posters, charts and diagrams at A3+ size.



### AcuLaser C9300N

The AcuLaser C9300N provides workgroups with superb A3 colour printing at 1200 dpi with outstanding reliability and lower running costs.

MODEL NUMBER	DS-50000	DS-60000	DS-70000					
<b>Flatbed Specifications</b>								
Type	A3 flatbed colour image scanner							
Scanning Method	Fixed document and moving carriage							
Optical Sensor	4-line colour CCD							
Light Source	White LED							
Optical Resolution	600 dpi x 600 dpi							
Output Resolution <sup>1</sup>	50 dpi – 4,800 dpi (1 dpi increments), 7,200 dpi and 9,600 dpi							
Max. Document Size	A3 (11.7" x 17")							
Flatbed Scanning Speed <sup>2</sup>								
<b>Resolution</b>	<b>Colour (24-bit)</b>	<b>Line Speed</b>	<b>Grey (8-bit)</b>	<b>Line Speed</b>	<b>Mono (1-bit)</b>	<b>Line Speed</b>		
300 dpi	4.0 sec or less	0.351 msec/line	4.0 sec or less	0.351 msec/line	4.0 sec or less	0.351 msec/line		
600 dpi	10 sec or less	0.702 msec/line	10 sec or less	0.702 msec/line	6.0 sec or less	0.351 msec/line		
<b>ADF Specifications</b>								
Type	N.A.		A3 sheet-fed, one-pass duplex scanner					
Scanning Method	N.A.		Fixed carriage and moving document					
Optical Sensor	N.A.		4-line colour CCD					
Light Source	N.A.		White LED					
Optical Resolution	N.A.		600 dpi x 600 dpi					
Output Resolution <sup>1</sup>	N.A.		50 dpi – 600 dpi (1 dpi increments)					
Document Size	N.A.		Min. 68mm x 120mm, Max. 297mm x 2540mm					
Document Thickness								
All Sizes	N.A.		35 gsm - 128 gsm					
< A6	N.A.		60 gsm - 190 gsm					
Load Orientation	N.A.		Face up, load from top					
Input Tray Capacity	N.A.		200 sheets (80 gsm)					
ADF Scanning Speed <sup>2</sup>								
<b>Resolution</b>			<b>Colour (24-bit)</b>	<b>Grey (8-bit)</b>	<b>Mono (1-bit)</b>	<b>Colour (24-bit)</b>	<b>Grey (8-bit)</b>	<b>Mono (1-bit)</b>
			<b>Simplex /Duplex</b>	<b>Simplex /Duplex</b>	<b>Simplex /Duplex</b>	<b>Simplex /Duplex</b>	<b>Simplex /Duplex</b>	<b>Simplex /Duplex</b>
200 dpi			40/80	40/80	40/80	70/140	70/140	70/140
300 dpi			40/80	40/80	40/80	70/140	70/140	70/140
600 dpi			7.5/15	7.5/15	20/40	12/24	12/24	25/50
Daily Duty Cycle	N.A.		5,000 pages			8,000 pages		
Multi-Feed Detection	N.A.		Ultrasonic sensor					
<b>Interface</b>								
Standard	USB 2.0 Hi-Speed							
Optional	Ethernet (with optional network interface panel)							
<b>Supported Platforms</b>								
Operating System	Microsoft® Windows XP (Home/Professional/Professional x64) /							
	Vista (32-bit/64-bit) / 7 (32-bit/64-bit)							
	Mac OS X 10.4.11 or later							
<b>Electrical Specifications</b>								
Rated Voltage	AC 100-240V							
Rated Frequency	50–60 Hz							
<b>Power Consumption</b>								
Operating	Approx. 25.5W		Approx. 79W					
Standby	Approx. 9.5W		Approx. 12.5W					
Sleep	Approx. 1.5W		Approx. 1.5W					
Power Off	Approx. 0.5W		Approx. 0.5W					
<b>Options</b>				<b>Order Code</b>				
Roller Assembly Kit	B12B813501							
Network Interface Panel (2.2" LCD panel)	B12B808411							

#### Dimensions & Weight

##### DS-50000

**Weight:** 14.8kg (32.6lb)



##### DS-60000

**Weight:** 26.9kg (59.3lb)



##### DS-70000

**Weight:** 26.9kg (59.3lb)



\*1 Scanning resolution as defined by ISO14473.

\*2 Scanning Speed Data Patterns

The thumbnail image below shows the scanning pattern used to determine scanning specifications.



© 2017 Epson India Pvt. Ltd. All Rights Reserved.  
Reproduction in part or in whole, without the written permission from Epson, is strictly prohibited. EPSON and EXCEED YOUR VISION are registered trademarks of Seiko Epson Corporation. All other products names and other company names used herein are for identification purposes only and are the trademarks or registered trademarks of their respective owners. Epson disclaims any and all rights in those marks. Print samples shown are simulations only. Specifications and product availability are subject to change without notice and may vary between countries. Please check with local Epson offices for more information.

Information correct at time of printing.  
January 2018

#### EPSON INDIA PVT. LTD.

12th Floor, The Millenia, Tower A, No.1, Murphy Road, Ulsoor, Bangalore - 560 008.

Tel: 080-4566 5000 Fax: 080-4566 5005

#### Regional Offices:

Ahmedabad - 3314 8500/01, Chennai - 3967 7500, Cochin - 4012 315, Coimbatore - 98942 19200, Kolkata - 4603 4714/15/29/30,

Mumbai - 3079 8200, New Delhi - 3312 0300, Pune - 3028 6000/05, Hyderabad - 4857 0032, Jaipur - 78699 11699



**Epson Helpline:** (9AM - 6PM) (Mon - Sat)  
For product info or service- 1800 425 0011  
For service - 1800 123 001 600

[www.epson.co.in](http://www.epson.co.in)

Dealer's Stamp