

Professional Imaging

EPSON[®]
EXCEED YOUR VISION

SureColor[®] S-Series
SureColor F-Series

EPSON BUSINESS SOLUTIONS

Epson is a leading provider of innovative technology solutions that help businesses succeed. We partner with you to best meet your specific needs, focusing on:

- Improved productivity
- World-class customer service and support
- Cost-effective, high-quality solutions
- A commitment to the environment

Discover how Epson can help you work toward the future. www.epson.com/forbusiness

Better Products for a Better Future[™]

eco.epson.com

Epson America, Inc. 3131 Katella Avenue, Los Alamitos, CA 90720
Epson Canada Limited 185 Renfrew Drive, Markham, Ontario L3R 6G3

1 Print times based upon print engine speed only, starting when ink is applied to the garment and ending when the application of ink to the garment ceases. Computer processing, network transmission, loading and unloading of garments is not included in these times. Actual print times may vary. Testing conducted by Epson America, Inc. as of November 2017.

Specifications and terms are subject to change without notice. EPSON, Epson Edge, MicroPiezo, PrecisionCore, SureColor, TFP and UltraChrome are registered trademarks, EPSON Exceed Your Vision is a registered logomark and Better Products for a Better Future and Exceed Your Vision are trademarks of Seiko Epson Corporation. Epson Preferred[™] is a service mark of Epson America, Inc. Mac is a trademark of Apple Inc., registered in the U.S. and other countries. Windows is either a registered trademark or trademark of Microsoft Corporation in the United States and/or other countries. All other product and brand names are trademarks and/or registered trademarks of their respective companies. Epson disclaims any and all rights in these marks. Copyright 2020 Epson America, Inc. CPD-59630 8/20



Exceed Your Vision™

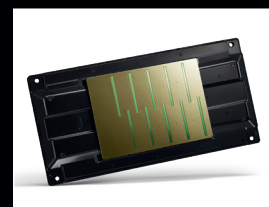
As one of the world's most respected performance imaging companies, Epson has set the benchmark for print quality. In many ways, the products shown in this line guide represent some of the most advanced forms of imaging ever developed.

This is what defines us. In short, it is the way in which we combine engineering and innovation, performance and everyday reliability.

From printing the most intricate photograph to the most precise architectural drawing, no other company has been so focused on developing imaging technology that inspires people to do amazing things.



SERIES	SureColor S-Series				SureColor F-Series				
MODEL	SureColor S40600**	SureColor S60600/S60600L**	SureColor S80600/S80600L**	SureColor S40600**/S60600** Print Cut Edition	SureColor F2100**	SureColor F570	SureColor F6370	SureColor F7200	SureColor F9470/F9470H
INK	UltraChrome GS3 (Solvent)	UltraChrome GS3 (Solvent)	UltraChrome GS3 (Solvent)	UltraChrome GS3 (Solvent)	UltraChrome DG (Aqueous DTG)	UltraChrome DS (Dye-sublimation)	UltraChrome DS (Dye-sublimation)	UltraChrome DS (Dye-sublimation)	UltraChrome DS (Dye-sublimation)
MAXIMUM WIDTH	64"	64"	64"	64"	16" x 20"	24"	44"	64"	64"
APPLICATIONS	Indoor and Outdoor Signage Vehicle Wraps Fine Art	Indoor and Outdoor Signage Vehicle Wraps Fine Art	Indoor and Outdoor Signage Vehicle Wraps Fine Art	Stickers Indoor and Outdoor Signage Vehicle Wraps	Direct to Garment T-Shirts Sweat Shirts Hats Tote Bags	Dye-sublimation Transfer Garment Embellishment Home Decor Promotional Products Metal Photo Panels	Dye-sublimation Transfer Sport and Fashion Apparel Home Decor Soft Signage Promotional Products Metal Photo Panels	Dye-sublimation Transfer Sport and Fashion Apparel Home Decor Soft Signage Promotional Products Metal Photo Panels	Dye-sublimation Transfer Sport and Fashion Apparel Home Decor Soft Signage Promotional Products
PRODUCT FEATURES	<ul style="list-style-type: none"> UltraChrome GS3 4-color solvent ink for amazing photographic print quality Print speeds up to 610 sq ft/hr; production print speeds up to 215 sq ft/hr* PrecisionCore® TFP printhead technology Precision media feeding and take-up system Precision Dot Technology GREENGUARD Gold Certified Same-day lamination Optional Print Drying System Includes workflow software by ONYX Includes 1-year on-site limited warranty with available rewards program 	<ul style="list-style-type: none"> UltraChrome GS3 4-color solvent ink for amazing photographic print quality Print speeds up to 1,020 sq ft/hr; production print speeds up to 550 sq ft/hr* 4-color Bulk Ink Pack System supplies 1,500 mL of ink x 4 colors (S60600L) PrecisionCore TFP printhead technology Precision media feeding and take-up system included Precision Dot Technology GREENGUARD Gold Certified Same-day lamination Includes workflow software by ONYX Includes 1-year on-site limited warranty with available rewards program 	<ul style="list-style-type: none"> UltraChrome GS3 10-color solvent ink for amazing photographic print quality Print speeds up to 1,020 sq ft/hr; production print speeds up to 340 sq ft/hr* 10-color Bulk Ink Pack System supplies 1,500 mL of ink x 10 colors (S80600L) Freely switch between White and Silver Inks PrecisionCore TFP printhead technology Precision Dot Technology Precision media feeding and take-up system GREENGUARD Gold Certified Same-day lamination Optional Print Drying System Includes workflow software by ONYX Includes 1-year on-site limited warranty with available rewards program 	<ul style="list-style-type: none"> Graphtec FC-9000 cutter package included for cutting and finishing S40600 and S60600 UltraChrome GS3 4-color solvent ink for amazing photographic print quality with print speeds up to 1,020 sq ft/hr; production print speeds up to 550 sq ft/hr* (S60600) UltraChrome GS3 4-color solvent ink for amazing photographic print quality with print speeds up to 610 sq ft/hr; production print speeds up to 215 sq ft/hr* (S40600) PrecisionCore TFP printhead technology Precision Dot Technology GREENGUARD Gold Certified Same-day lamination Includes workflow software by ONYX Includes 1-year on-site rewards program limited warranty with available rewards program 	<ul style="list-style-type: none"> UltraChrome DG Inks for exceptional direct-to-garment imaging High-capacity 600 mL ink cartridges with 2-year shelf-life Newly developed print modes for up to double the productivity¹ PrecisionCore TFP printhead optimized for production using UltraChrome DG Inks Imaging on 100% cotton, polyester blend Fast loading with fabric platen cover Self-cleaning system with in-line cleaning cartridge Includes 1-year on-site limited warranty 	<ul style="list-style-type: none"> Epson Genuine Dye-Sublimation Inks formulated for exceptional dye-sub transfer Photographic print quality up to 2,400 x 1,200 dpi Mess-free auto-stop ink bottles Includes standard Mac® and Windows® print drivers Supports both roll and sheet-fed media Built-in Auto Sheet Cutter Includes 1-year limited warranty 	<ul style="list-style-type: none"> UltraChrome DS Inks formulated for exceptional dye-sub transfer Print resolution up to 1,440 x 720 dpi Capable of achieving speeds up to 680 sq ft/hr* High-capacity 1.5 L refillable ink reservoirs for increased productivity Includes Epson Edge® print workflow software Built-in Auto Sheet Cutter Includes 1-year on-site limited warranty; eligible for discounted Epson PreferredSM Plus plans with rewards program 	<ul style="list-style-type: none"> UltraChrome DS Inks formulated for exceptional dye-sub transfer Print resolution up to 1,440 x 720 dpi Capable of achieving speeds up to 634 sq ft/hr* High-capacity 1.5 L refillable ink reservoirs for increased productivity Includes workflow software by Wasatch for textile printing Precise take-up reel for complete roll-to-roll media handling Built-in post-printing heater for reduced ink-drying times Includes 1-year on-site limited warranty; eligible for discounted Epson Preferred Plus plans with rewards program 	<ul style="list-style-type: none"> UltraChrome DS Inks formulated for exceptional dye-sub transfer Dual PrecisionCore TFP printhead Print resolution up to 1,440 x 720 dpi F9470H features Fluorescent Yellow and Fluorescent Pink Inks for high visibility applications Capable of achieving production speeds up to 1,169 sq ft/hr* High-capacity 3.0 L refillable ink reservoirs for increased productivity Includes Epson Edge print workflow software Precise take-up reel for complete roll-to-roll media handling Built-in post-printing heater for reduced ink-drying times Includes 1-year on-site limited warranty; eligible for discounted Epson Preferred Plus plans with rewards program
PRODUCT CODE	SCS40600PE	SCS60600PE SCS60600L	SCS80600PE SCS80600L	SCS40600PC SCS60600PC2	SCF2100WE	SCF570SE	SCF6370PE SCF6370SE	SCF7200PS	SCF9470PE SCF9470HPE



Advanced Printhead Technology

MicroPiezo® is a unique printing technology, developed by Epson. Its legendary performance, combined with its ability to support virtually any ink chemistry, has forever changed inkjet printer design, achieving what was once considered impossible.



Epson® Professional Media

It's a magical moment when a blank sheet of paper is transformed into an extraordinary work of art. Our wide selection of paper surfaces, weights and textures enables creative professionals to express their true vision. Each paper is optimized for use with Epson inks, printers and drivers to ensure the highest quality and consistency. It's just one reason why professionals prefer Epson media.



Industry-Leading Ink Technology

At Epson, we have dedicated more than 80 chemical engineers to pushing the limits of ink technology, making Epson inks the standard in commercial printing industries, from signage to photography to textiles. Across the entire printer line, our latest generation of Epson inks provides outstanding print quality for the most demanding printing requirements.

* Print speeds are based on the print engine speed only. Total throughput time for any print depends on various factors including workstation configuration, file size, print resolution, ink coverage and networking. Actual print speeds will vary.

** This printer is designed for use with Epson genuine cartridges and ink only, not third-party cartridges or ink. Other brands of ink cartridges and ink supplies are not compatible and, even if described as compatible, may not function properly. For more information, see www.epson.com/wideformatink

FOR MORE INFO, PLEASE VISIT PROIMAGING.EPSON.COM