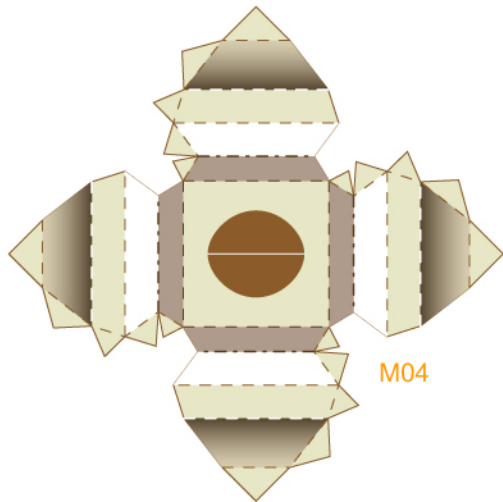


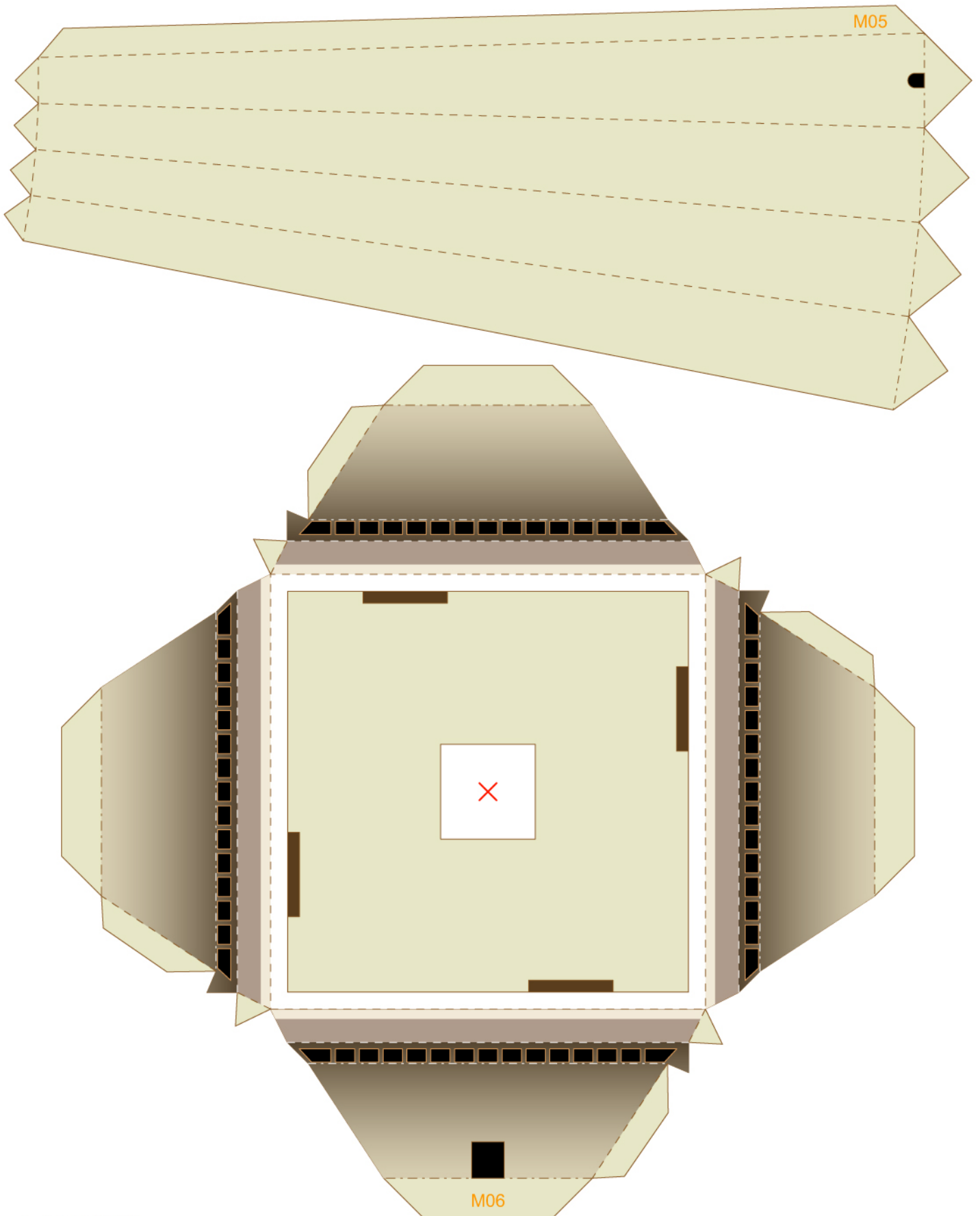
M02

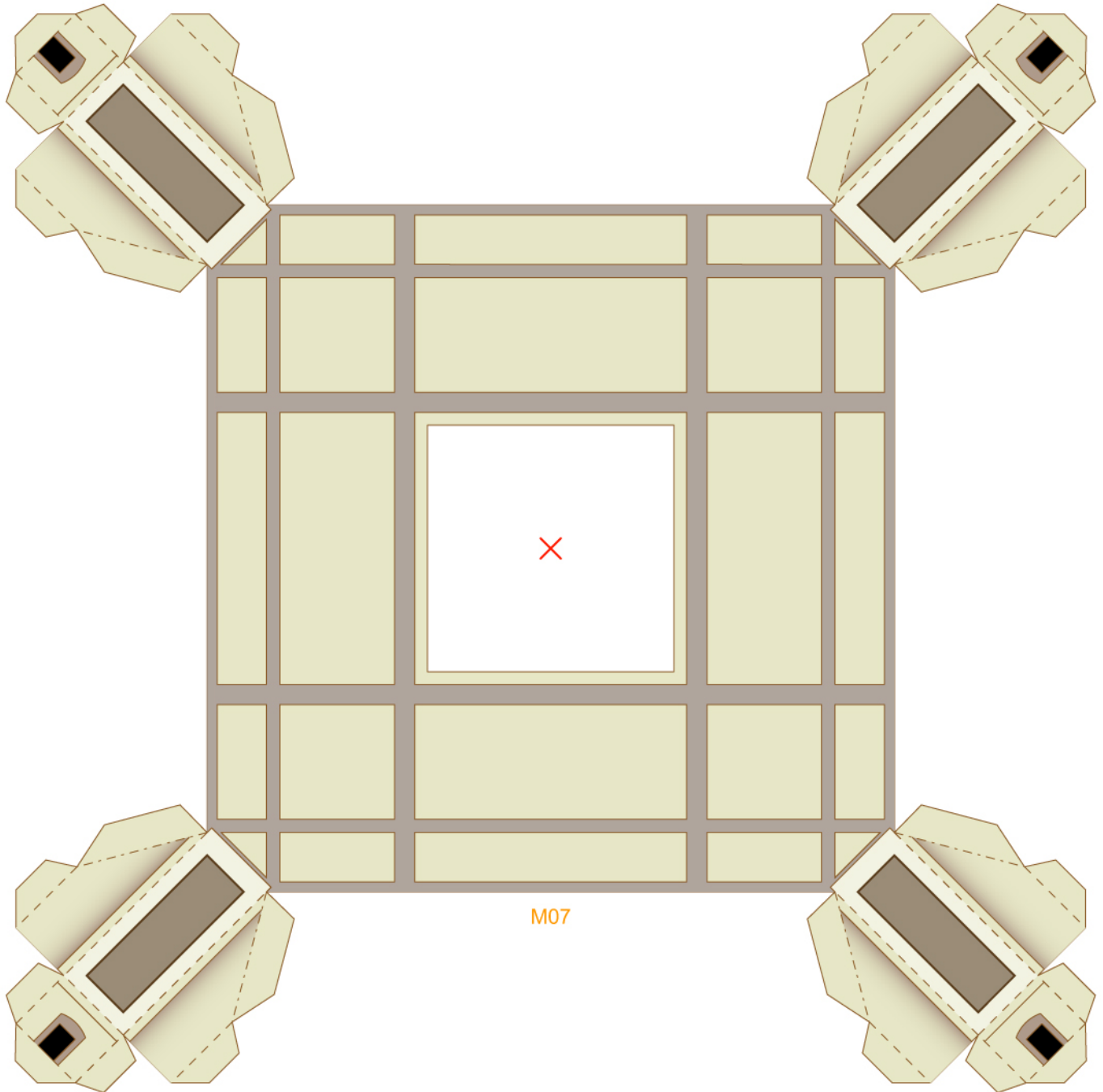


M03

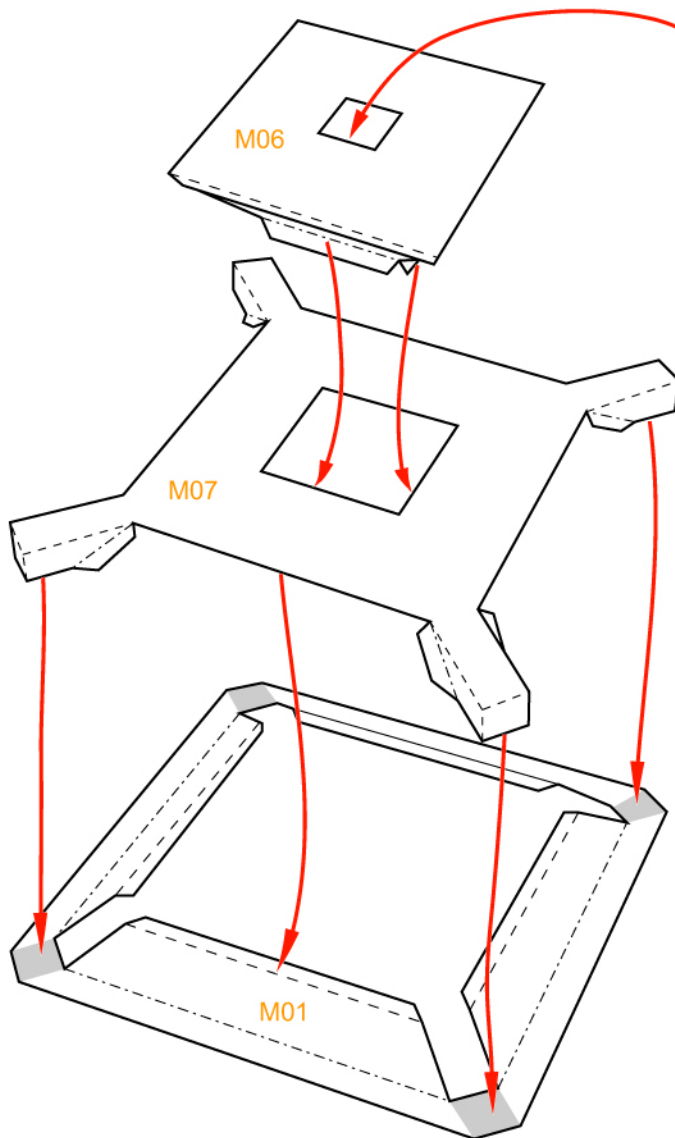
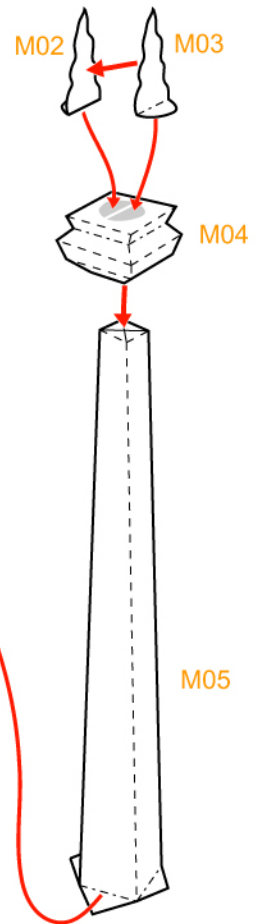
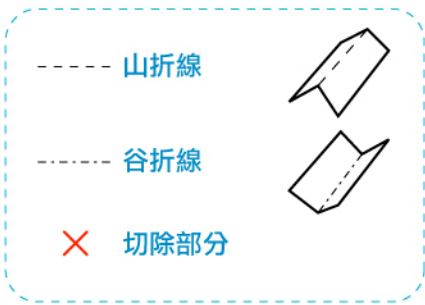


M04





組合說明



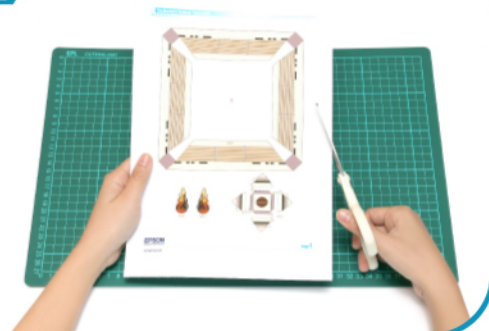
製作步驟

1



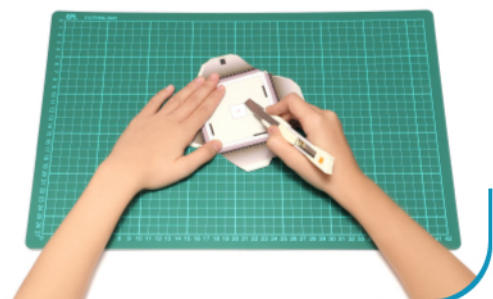
用沒有墨水的原子筆或鐵筆劃一下摺線。

2



沿線剪出所有組件。為免混淆，可先在組件背面劃上記號。

3



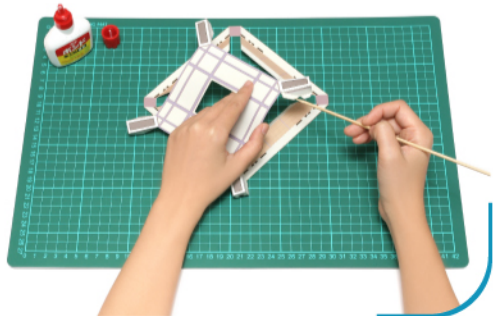
剪掉畫有「x」部份。

4



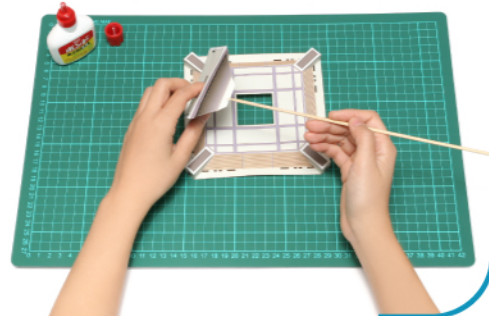
按組合說明，將M02及M03黏合，並將M04、M05、M06及M07各自摺疊貼好。

5



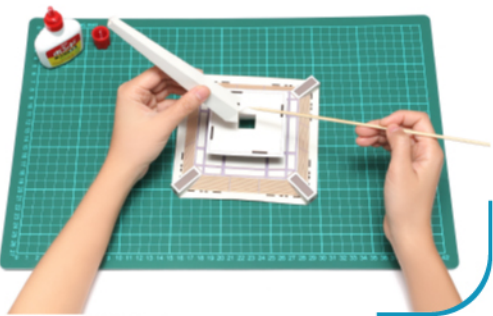
把M01及M07黏合成底台。

6



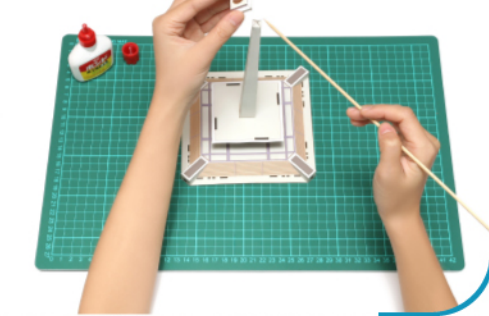
再將M06與由M01及M07組合成的底台黏合。

7



把M05貼於M06之上。

8



再將M04貼於M05之上。最後將M02及M03組合成的火炬貼於M04之上，紀念碑即時展現眼前。