

EPSON®

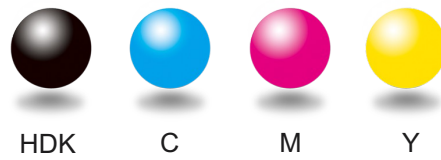
SureColor F20070

Sales Reference Guide

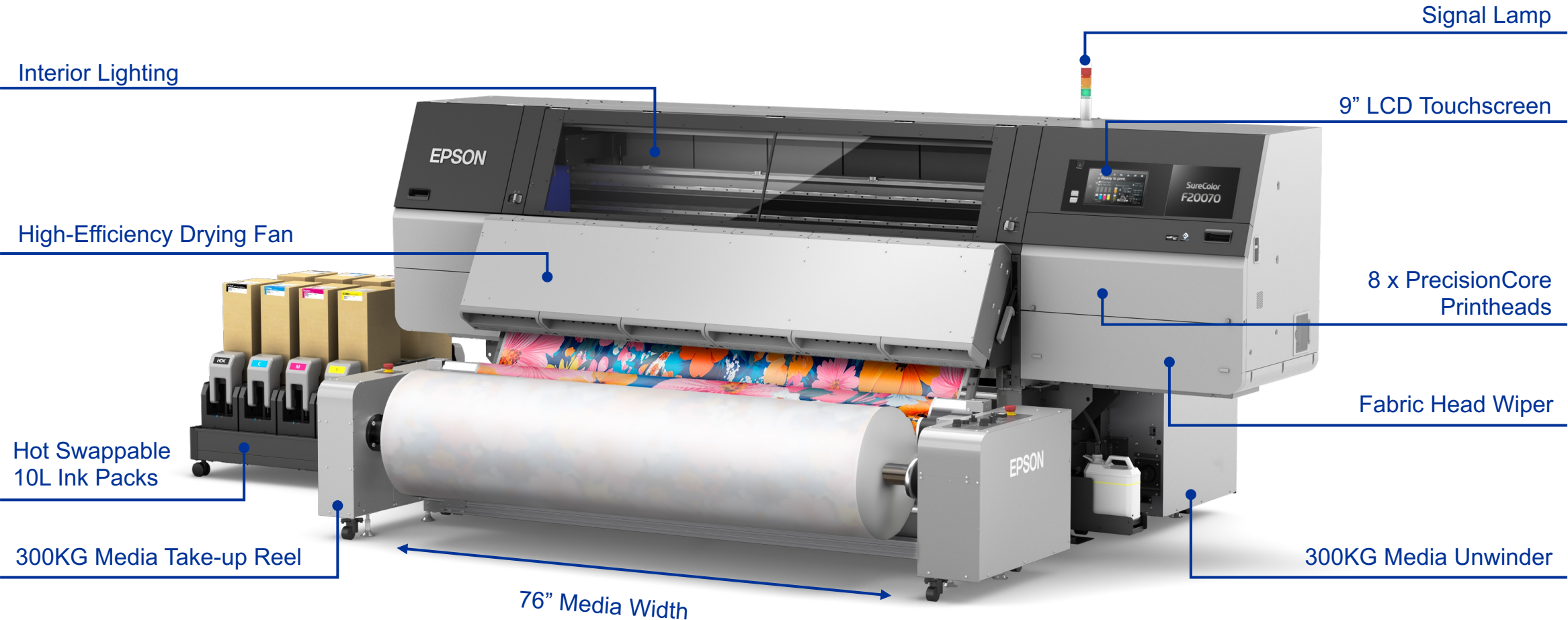


“Industrial dye-sub production built for next-level throughput and quality”

SureColor F20070



SureColor F20070 Overview



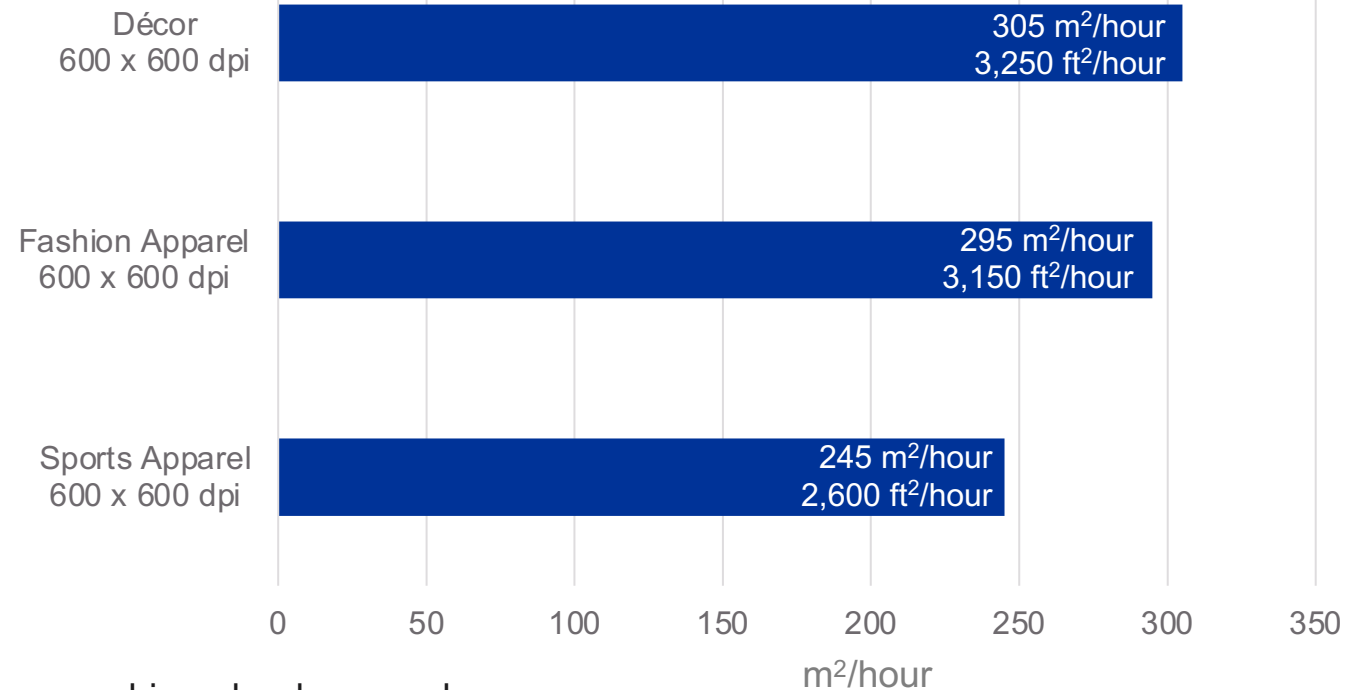
Performance

Rock-solid reliability



Maximize sellable output across every shift

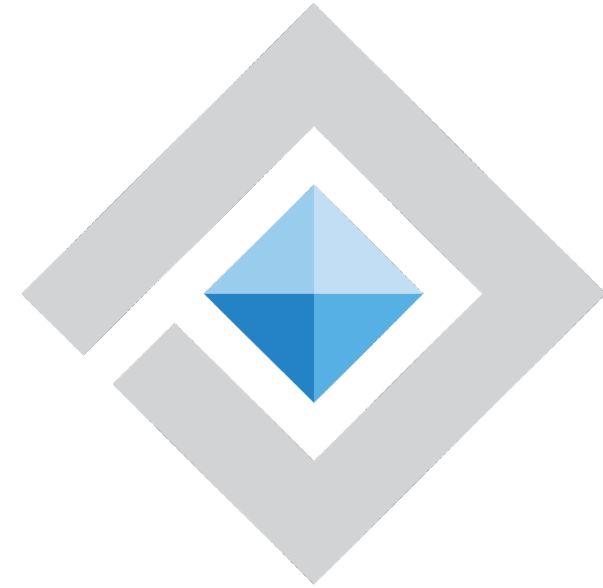
- Print up to 305 m²/hr | 3,250 ft²/hr
- Increase total output per shift without adding operators
- Reduce reprints and waste
- Continuous printing with minimal idle time



More uptime + fewer defects = more shipped orders per day

PrecisionCore®

Advanced Printhead Technology



PRECISIONCORE
PRINthead

PrecisionCore Printheads



PRECISIONCORE
PRINTHEAD

Engineered for industrial productivity

Built for Industrial Printing

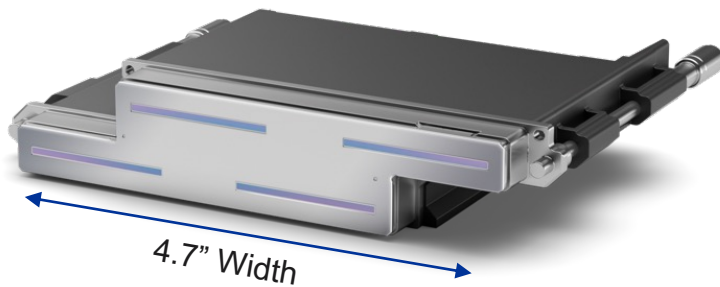
- 8-head architecture improves consistency across wide prints
- Reduces banding resulting in fewer rejected jobs and reprints
- Delivers production-ready output even in lower-pass (faster) modes

PrecisionCore Technology

- Nozzle Verification Technology (NVT) with auto compensation for consistent, high-quality prints
- Enables high-speed modes without sacrificing sellable quality

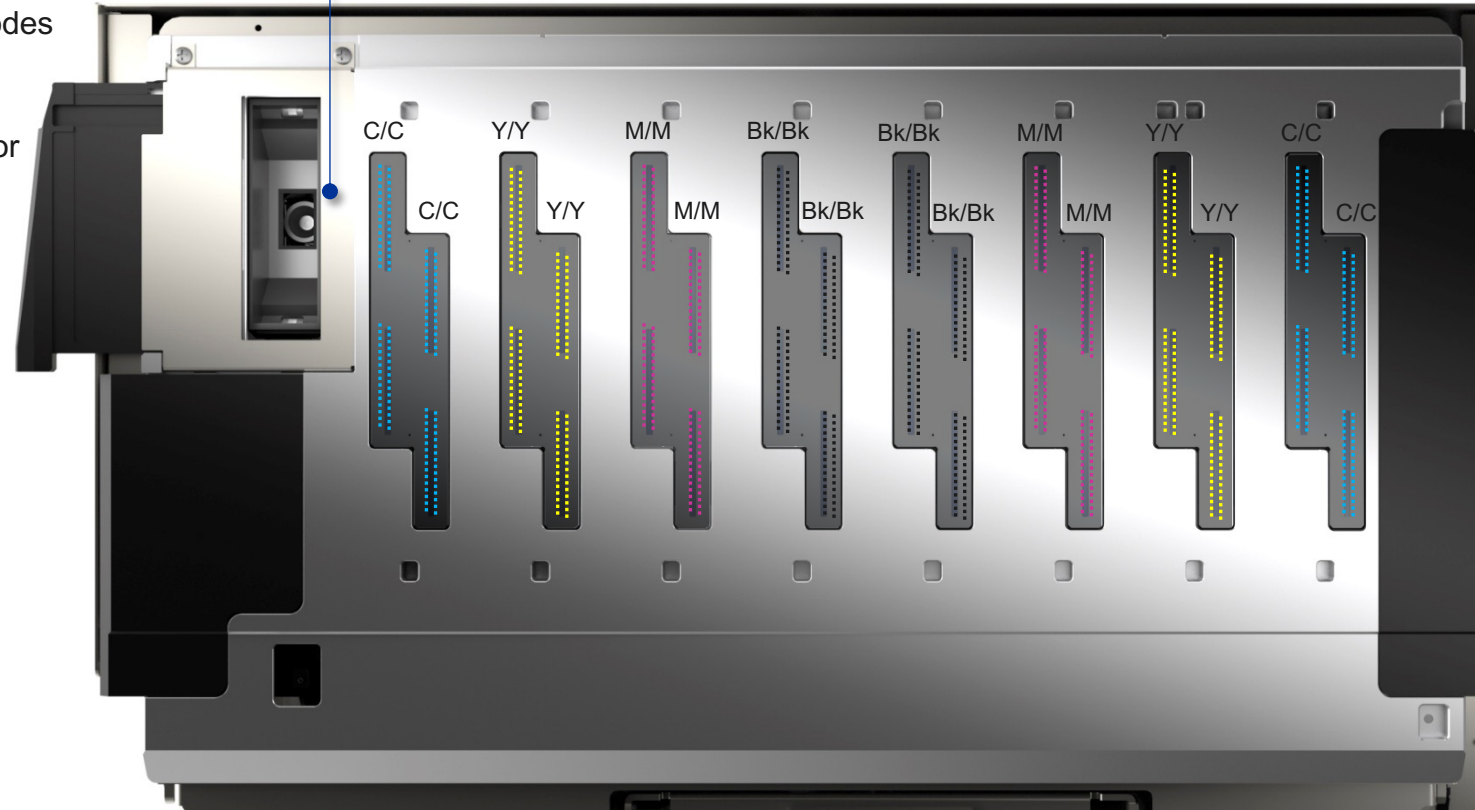
User Replaceable Printhead

- No special tools needed for easy replacement
- Reduce production downtime with self-service



Individual Printhead

RGB Camera captures printed pattern images for auto adjustments.



Product Features

Designed for round-the-clock productivity



Run Longer Jobs with Less Operator Intervention

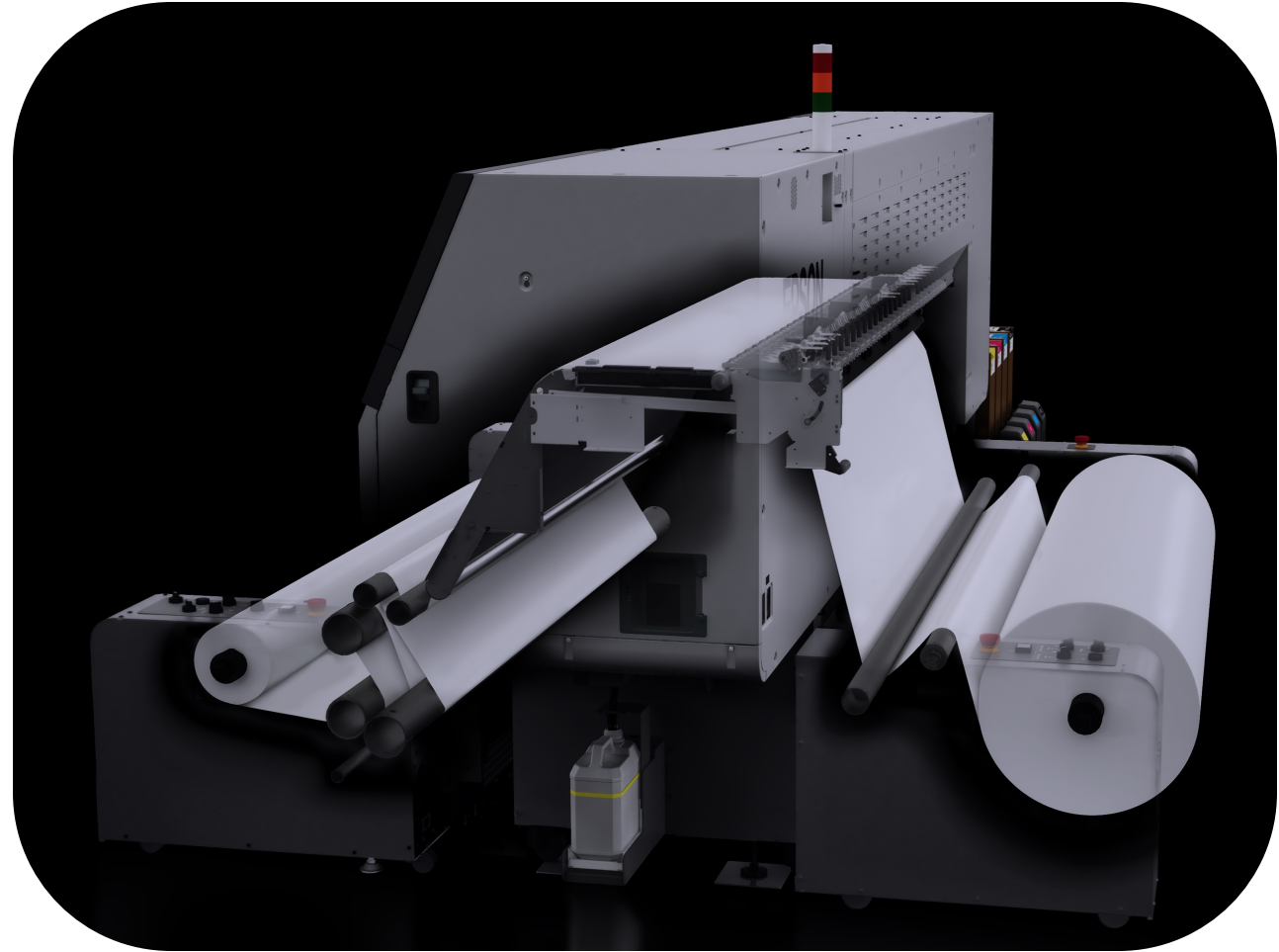
Maximize throughput for unattended printing

Large Roll Unwinder and Take-up Reel

- Accommodate rolls up to:
 - 1.95m (76.7") wide,
 - 0.5m (19") outer diameter,
 - 300kg (660 lbs.) weight
- Operational gains:
 - Fewer roll changes
 - Unattended overnight runs
- Cost benefits:
 - Lower labor per print
 - Lower media cost (22gsm support)

Advanced Auto-tension Control

- Compatible with transfer paper of various thicknesses and weights
- Accurate roll winding from beginning to end



Hot Swap System

Continuous printing for increased productivity

Hot Swappable Ink Packs

- Keep jobs running during peak production
- Ideal for high-volume shops running multiple shifts
- Reduce operator dependency and shift interruptions
- Printer automatically switches from an empty pack to a full one
- Empty ink pack can be removed and replaced without stopping production



Cleaning and Filtration Systems

Reduce unexpected downtime that disrupts production schedules

Active Air Filtration System

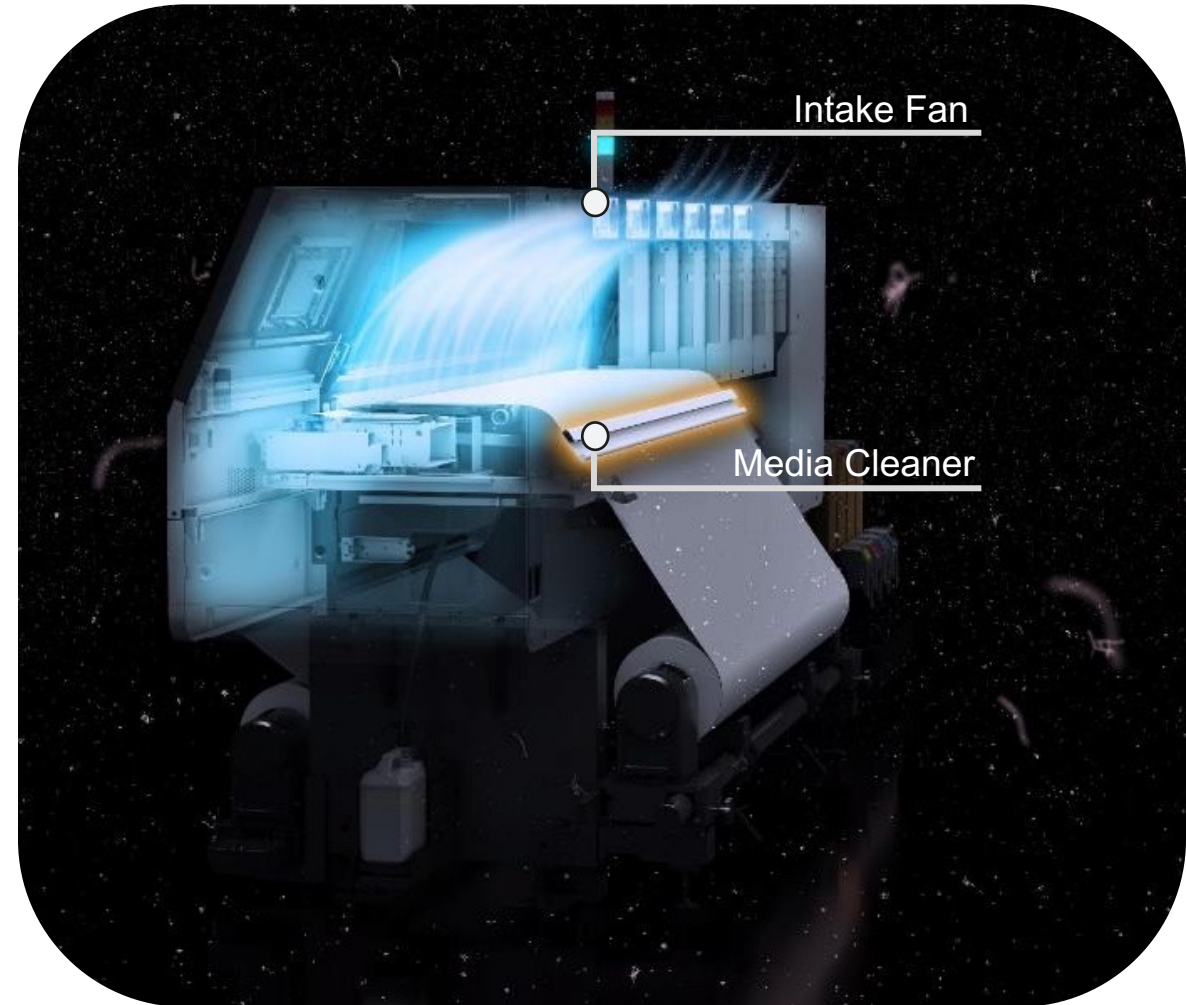
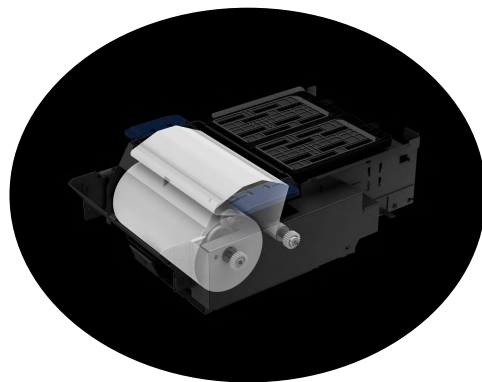
- Minimize unexpected stoppages caused by contamination

Transfer Paper Cleaning System

- Removes surface dust from media before entering the printer

Printhead Fabric Wiper Cleaning System

- Protect printhead health for consistent output
- Reduce daily maintenance burden on operators

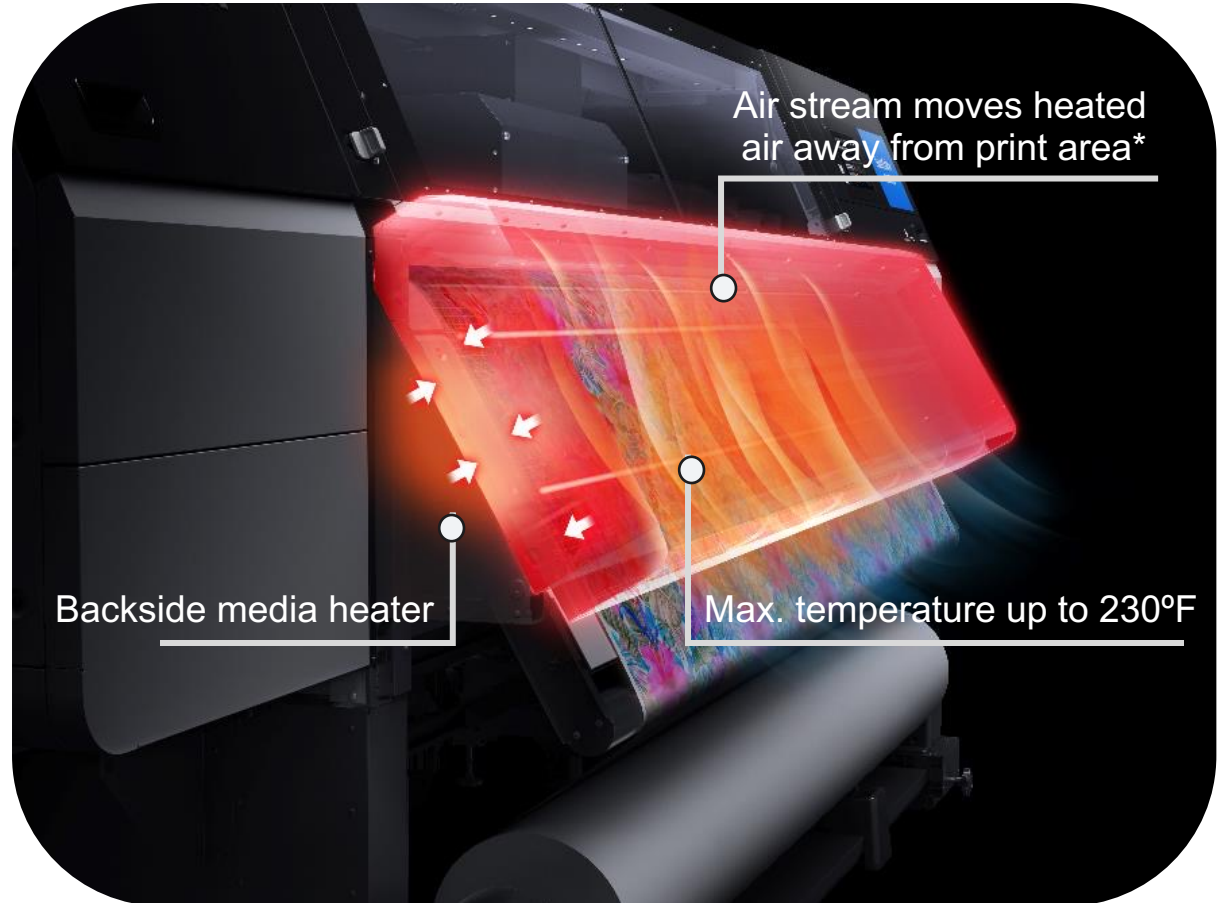


Media Heating System

Maintain Print Quality at High Speeds

Double-Sided Media Dryer

- Prevents costly rework caused by smudging or transfer defects
- Ensures consistent transfer quality
- Enables full-speed operation without compromise



* Fan in Dryer can be independently operated even during heater-off status.

Workflow

Efficient Workflow Solutions



Epson Edge Print PRO

Professional workflow software

Intuitive and feature-rich RIP software Included

- Process more jobs
 - Faster job setup with intuitive interface
 - Hot-folder automation and network printing
- Reduce waste
 - Job layout and nesting controls
 - Textile pattern repeat tools
- Improve color accuracy
 - Reduce trial-and-error reprints
 - Prebuilt color profiles for major transfer papers



Epson Cloud Solution PORT®



Remote monitoring of your printing¹

- Identify bottlenecks in production with live information
- Monitor multiple printers across locations through Cloud-based, encrypted reporting
- Helps maximize utilization of every production asset
 - View dashboards of your production rates, printer utilization, up-time, and more from virtually any internet connected device.
 - Cost Reporting to provide greater insight to manage your business.
- Epson support with fast, remote troubleshooting.
- <https://www.epson.com/PORT>



Epson Color Management Solutions

Available tools to enhance printer's color performance



Full-Featured Spectrophotometer*

- Compact, easy-to-use Epson SD-10 for measuring physical color samples
- Create custom color palette libraries for various projects
- Use with Epson Cloud Solution PORT and Adobe Illustrator with a plug-in
- Integrates directly with Epson Edge Print PRO and leading workflow software for easy spot color replacement
- Verify print accuracy for even the most demanding users

Portable Epson Auto Chart Reader*

- Works in conjunction with the Epson SD-10 and Epson Edge Print to create, verify, and calibrate color profiles for consistent color

* Epson SD-10 Spectrophotometer and Epson Auto Chart Reader sold separately

Product Support

Warranty and Service Programs



Epson Preferred Plus™

Extended Service Plans to Protect Your Investment

- **Fully Supported by Epson**
 - Technical phone support: Monday-Friday 6 am – 6 pm PST
 - On-site service, if required
 - Plans are renewable for up to 5 years continuous coverage
 - Select a plan that is best for your business



	Epson Preferred Plus Plan	Epson Preferred Plus with Printhead Self-Service Plan ¹
Service (excluding printhead) performed by:	Epson America	Epson America
Printhead Replacement performed by:	Epson America	User
Printheads included in plan	Yes. Up to 1 printhead per year	No. Printhead available at discounted price
Service Coverage Period	1 Year, renewable up to 5 years	1 Year, 3 Year, or 5 Year plans available. Plans can be mixed to provide coverage up to 5 years

¹Epson Preferred Plus with Printhead Self-Service plans require enrollment in Epson Cloud Solution PORT. The printer must have internet connectivity when it is set up and when the customer replaces a print head. Epson recommends that the Printer have a full-time internet connection to allow customer to access advanced Printer-management features.

Improvements Over Previous Generation



Printer Model	SureColor F11070	SureColor F20070
Production Speed	Décor/Fashion: up to 255 m ² /hr 2,700 ft ² /hr Sports: up to 150 m ² /hr 1,600 ft ² /hr	Décor/Fashion: up to 305 m ² /hr 3,250 ft ² /hr Sports: up to 245 m ² /hr 2,600 ft ² /hr
# of Printheads	4 heads, 4.7" – Array	8 heads, 4.7" – Array
Media Support	up to 60kg 130 lbs. roll unwinder/take-up Available 300kg roll unwinder	up to 300kg 660 lbs. roll unwinder/take-up

Why Epson



Complete Epson Genuine Solution



Why SureColor F20070 Wins

Designed for high-volume production environments

Produce More

- Up to 305 m²/hr | 3,250 ft²/hr for higher daily throughput

Run Longer

- 300kg roll support + hot swap inks for uninterrupted production

Waste Less

- PrecisionCore + advanced media handling reduces defects

Depend on It

- Built for industrial uptime with minimal maintenance

Scale Confidently

- Designed for multi-shift, high-volume environments



Specifications are subject to change without notice

Print speeds for the SureColor F20070 printer are based on print engine speed only, in bi-directional mode. Total throughput times depend upon front-end RIP, file size, printer resolution, ink coverage, networking, etc.

The SureColor F20070 is designed to use only Epson ink cartridges and refill packs and no other brands of new or refilled cartridges, or other brands of ink or bulk ink systems. Using Epson ink is important for reliable performance and high image quality.

*Oeko-Tex Standard specifies testing criteria for the presence of harmful substances within a textile product. The standard belongs to the International Association for Research and Testing in the field of Textile Ecology (Oeko-Tex).

Epson, Epson UltraChrome, PrecisionCore, TFP, SureColor are trademarks or registered trademarks of Seiko Epson Corp.

All other product brand names are trademarks and/or registered trademarks of their respective companies. Epson disclaims any and all rights to these trademarks.

© Epson America, Inc. 2026 TC 05.20.26

EPSON®

**Create Customer Value.
Strive for Excellence.
Serve Others.**