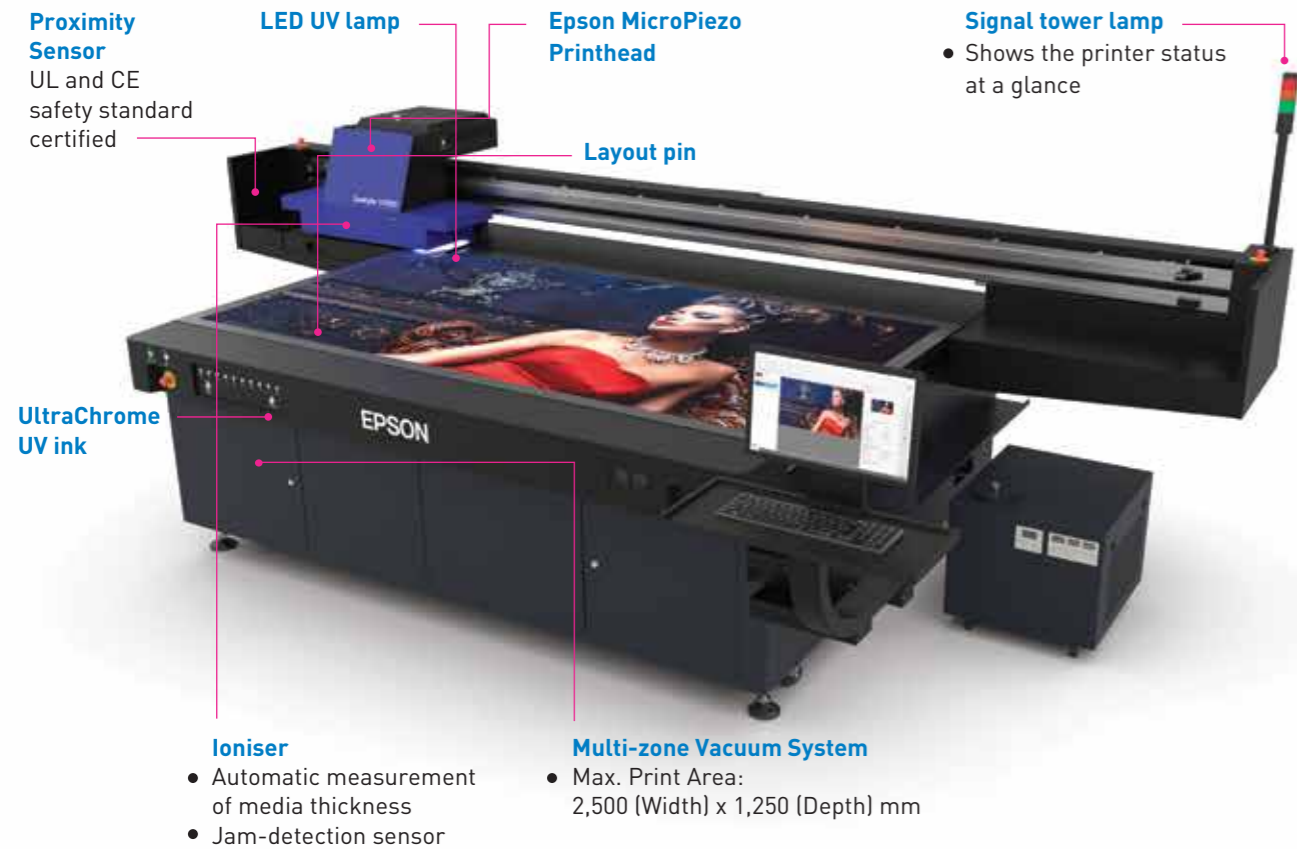


Versatility Redefined



Epson's SC-V7000 reinvents what large format printers can offer, allowing businesses to print directly on a wide variety of substrates including vinyl, textile, canvas, film, and rigid substrates*, at 80 mm maximum media thickness. Allowing printing on aluminium composite boards and styrofoam boards, the possibilities of creating with the SC-V7000 are limitless.

KEY FEATURES



* Some materials will require pre-treatment, contact us to find out more.

SPECIFICATIONS

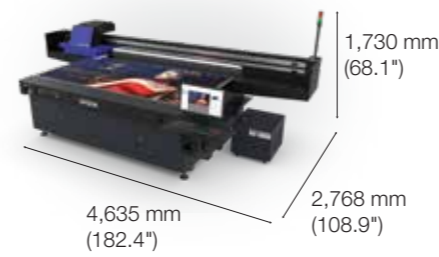
SC-V7000

MODEL NUMBER	SC-V7000
Printing Technology	MicroPiezo® Inkjet Technology
Technology 1	Variable-Sized Droplet Technology
Technology 2	MicroPiezo® Printhead
Print Head	11,520 nozzles (180 nozzles x 8 lines x 8 head)
Nozzle Configuration	720 x 1440 dpi
Maximum Resolution	3.5 pl
Minimum Ink Droplet Volume	
Print Specifications	
Print Speed	Colour High Speed: 360 x 720 dpi ¹
Curing Method	LED-UV type ²
Ink System	
Ink Type	UV Curable Ink
Ink Brand Name	Epson UltraChrome™ UV Ink
Colours	Cyan, Magenta, Yellow, Black, Light Cyan, Light Magenta, Gray, Red, White, Varnish
Ink Capacity	1,000 mL
Ink Case	Ink Bottle
Paper Handling	
Maximum Printing Area	Max. 2,500 x 1,250 mm
Maximum Media Size	Max. 2,500 x 1,250 mm
Maximum Media Thickness	Max. 80 mm
Maximum Media Weight	Max. 50 kg/m ² (non-concentrated)
	Suction System User Selectable 4 Zones (X Axis: 2 Zones. Y Axis: 2 Zones)
Connectivity	
Interface	Super-speed USB (Type-B)
Operating System	
Requirements	
PC System Requirement	Windows 7 x64 SP1, Vista x64, 8 ³
Utility Software	
Bundled in CD	Windows – Epson Edge Print PRO
Web Delivery	Windows – UV Flatbed Controller, Epson Control Dashboard, Epson Device Admin
Electrical Specifications	
Voltage	AC 200 V, 208 V, 220 V, 230 V, 240 V. 50/60 Hz
Rated Current	29 A
Volt-Ampere	5.7 kVA
Power Consumption	Operating: Approx. 4.8 kW
Environmental Conditions	
Temperature	Operating: 15 °C to – 30 °C
Humidity	Operating: 20% – 80% (no condensation)
Sound Pressure	Approx. 70 db(A) ⁴
Dimensions & Weight	
Dimension (W x H x D)	4,635 x 1,730 x 2,768 mm
Weight	Approx. 1,370 kg (with ink cartridges)

¹ Refer to Print Speed sheet for print condition.
² Include water cooler. Equipment contains fluorinated greenhouse gas.
 Type of F-Gas: R410A, Total F-Gas mass (kg): 0.5. Total eq (CO₂-kg): 1,045 (Euro area only).
³ For utility software, please refer to system requirement for each utility software.
⁴ 68.9 db(A). Operation condition: Production mode, suction is On. Method: According to clause 1.7.4.2 of Machinery Directive 2006/42/EC.

Dimensions and Weight

SC-V7000
Weight: Approx. 1,370 kg (3 020.3 lbs)
 (With ink cartridges)



What's in the box*

- Printer
- Initial setup tools
- Safety manual
- Epson Edge Print PRO

*Items may differ slightly depending on countries.

Inks & consumables

C13T49V110	Black (1000 mL)
C13T49V210	Cyan (1000 mL)
C13T49V310	Magenta (1000 mL)
C13T49V410	Yellow (1000 mL)
C13T49V510	Light Cyan (1000 mL)
C13T49V610	Light Magenta (1000 mL)
C13T49V710	Grey (1000 mL)
C13T49V810	Red (1000 mL)
C13T49V910	White (1000 mL)
C13T49VA10	Varnish (1000 mL)
C13T49V010	Cleaning (1000 mL)
C13S210135	Coolant (9000 mL)
C13T724000	Waste Ink Bottle (1000 mL)

© 2025 Epson India Pvt. Ltd. All Rights Reserved. Reproduction in part or in whole, without the written permission from Epson, is strictly prohibited. EPSON is registered trademark of Seiko Epson Corporation. All other products names and other company names used herein are for identification purposes only and are the trademarks or registered trademarks of their respective owners. Epson disclaims any and all rights in those marks. Print samples shown are simulations only. Specifications and product availability are subject to change without notice and may vary between countries. Please check with local Epson offices for more information.

Apple, iPad and iPhone are trademarks of Apple Inc., registered in the U.S. and other countries. App Store is a service mark of Apple Inc.

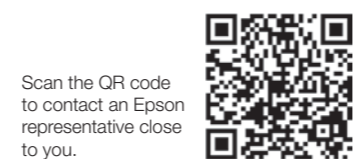
Android is a trademark of Google Inc.

Partner's Stamp

Information correct as of April 2025.

EPSON INDIA PVT. LTD.

11th Floor, Godrej Centre, Hebbal, Survey No.26, Bellary Road, Sahakar Nagar, Byatarayanapura, Bangalore 560 092, Karnataka. Tel: 080-6939 5000 Fax: 080-6939 5005



CONTACT EPSON TODAY! EMAIL: amit@eid.epson.co.in

Epson Helpline: For product info or service - 1800 425 0011
 For service: 1800 123 001 600 or 1860 3000 1600 (9 am - 6 pm) (Mon - Sat)
 Email: ifp@epson-india.in

www.epson.co.in

WHERE VIBRANCE MEETS VERSATILITY.

SureColor™ SC-V7000



UV large format printing with a wide range of media suitability and applications.

Epson's first UV flatbed large format printer, SC-V7000, provides exceptional prints in stunning colours, including vivid reds across a flexible range of media of up to 80 mm thick. Along with an intuitive and user-friendly operating system, the printer improves productivity, safety, and easy usability. Using Epson's patented MicroPiezo® technology, the UV flatbed printer produces impressive colour-consistent, high-quality prints suitable for both indoor and outdoor use.

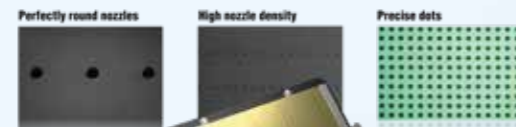


Suitable for big and small businesses, Epson's SC-V7000 UV flatbed large format printer produces accurate, colour-consistent, and scratch-resistant prints in stunning colours including stimulating reds. Creating high-value signage and striking POS displays for outdoor, indoor, and wall applications, the large format UV printer prints on a wide variety of substrates including canvas, vinyl, aluminium composite boards, textiles, and more.

Patented Technology

Epson's MicroPiezo Technology

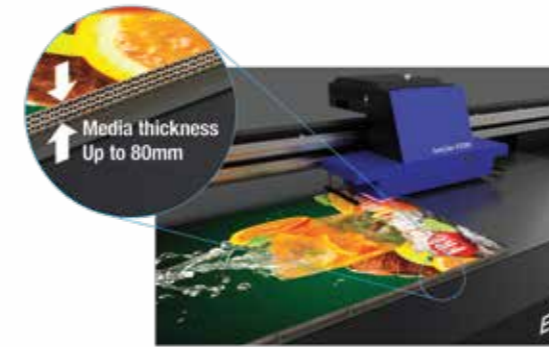
Using Epson's latest MicroPiezo technology, and Precision dot technology, the SC-V7000 printer has superb ink droplet control (as fine as 3.5 pl), producing smooth tones and gradation with low levels of graininess in images. The unique printhead layout facilitates high-speed printing, boosting efficiency for businesses.



Amazing Versatility

Stunning Prints In Every Environment

The SureColor™ SC-V7000 is versatile enough to allow various print media to be used thanks to automatic detection and adjustment to accommodate media of up to 80 mm thickness and its highly accurate substrate control. The four print zones can easily hold media in place securely. It prints directly onto foam board, poster board, real estate signage, and on a variety of materials, including wood, metal, and acrylic.

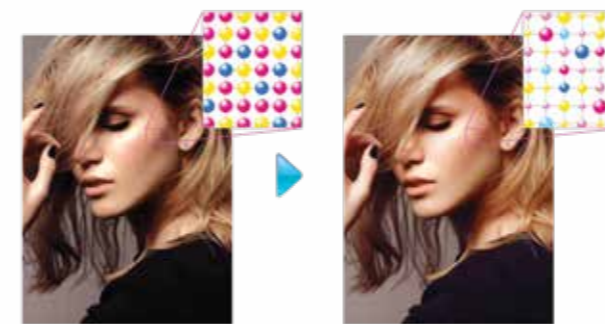


Consistent and Eco-conscious UV Inks

Impeccable Print Quality

With up to 10-colour ink sets that provide very low graininess / banding, the UV flatbed printer provides highly vivid and consistent prints with striking reds and stunning colours.

Epson's UV inks also expand the possibilities for businesses to print onto traditional signage materials, as well as a wider variety of substrates such as canvas, textiles, and film. With the newly developed eight colours, on top of white and varnish inks, businesses can now ensure colour-consistent and vivid prints with the SureColor™ SC-V7000.



Other brands

Epson SC-V7000 with Variable Droplet

Eco-conscious Sustainable Inks

In line with Epson's focus on sustainability, the water-based UV inks conform to industrial standards, with international safety accreditation such as the Greenguard Gold certification, the AgBB, as well as the A+ grading for the French-VOV.

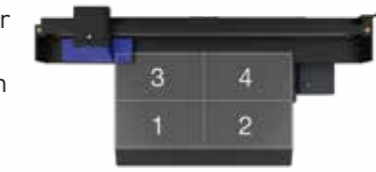


Enhanced Productivity

Epson's SC-V7000 gives businesses a competitive edge thanks to its high-speed printing with a maximum print area of 2.5 metres by 1.25 metres. Without losing productivity, the printhead layout enables simultaneous high-speed printing, providing enhanced efficiency for every print job.

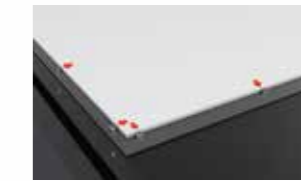
Vacuum Zones

With four vacuum zones, the flatbed printer enables businesses to print on a variety of media including lightweight materials such as styrofoam boards.



Unique Layout Pin

With layout pin positions on the printer, businesses can easily ensure media position is set accurately, reducing any human errors in production.



Integrated Ioniser

The inbuilt integrated ioniser helps reduce static electricity, which, in turn, minimises dust from adhering to the surface of the print media. This ensures stable image quality and ink-jetting characteristics in end products.



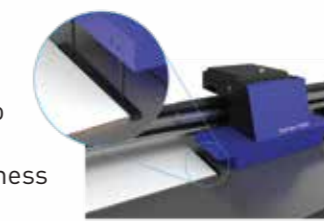
Top class reliability

Media Thickness Detection

Businesses can now rely on the automatic measurement of media thickness function to accurately pinpoint media height, reducing time spent on operation, and focus on other important tasks such as the pre-press and file preparation processes.

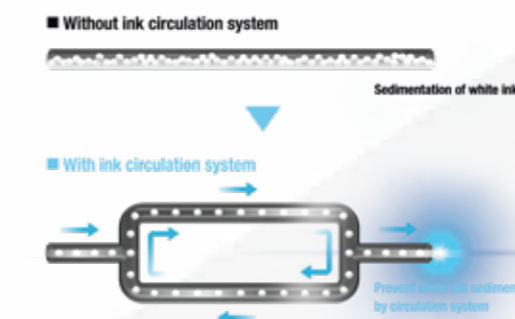
Jam Detection

The inbuilt jam-detection sensor helps businesses to prevent a head crash, even when a wrong media thickness is set.



White Ink Circulation

The white ink circulation system reduces ink waste by circulating and stirring white ink, preventing ink sedimentation, and bringing extra savings for businesses.



Extensive EMX Library

The SC-V7000 comes with Epson's extensive EMX library, providing operators with optimised colour profiles and mechanical settings on a wide range of sign and display materials from leading brands.

Epson Cloud Solution PORT

Designed with simplicity and security in mind, the Epson Cloud Solution PORT provides a live view of your printer fleet production*, equipment utilisation, and service information, enabling better management and optimisation of your Epson printing workflow.



Remote Monitoring*



Production Efficiency Tracking & Reporting



Expedited Service Response and Printhead Ordering

* All features of this system require an active internet connection and use of a supported browser.