

Contents

Support for Windows 11	3
Business Ink Jet Printers	3
Ink Tank System Printers	4
Laser Printer	4
Large Format Printers	5
SIDM	6
Scanner	6
FAQ	7
A Windows 11 driver is not available for my printer or all-in-one on my product's support page. How do I use my product with Windows 11?	7
Windows 11 did not automatically install a simple driver for my printer or all-in-one. How do I install the simple driver?	8
Epson Scan is not available for my product for Windows 11. What should I do?	10
Windows 11 24H2 / Windows Server 2025	11
Features of Windows 11 24H2 / Server 2025	11
FAQ	12
What is Windows Protected Print (WPP)?	12
What happens when Windows Protected Print (WPP) is turned ON?	12
Can I still print with Windows Protected Print (WPP) mode turned ON?	12
How to disable Windows Protected Print (WPP) mode?	12
Support for Windows 10 Oct 2018 Update	13
Ink Jet Printers	13
Business Printers	13
Home & SOHO Document Printers	13
Ink Tank System Printers	14
Large Format Printers	14
TM-Printers and Colorworks	15
Laser Printers	15
Scanners	16
Software Compatibility	17
Epson and Windows 10 ARM64	19
Ink Jet Printers	19
SIDM Printers	21
Laser Printers	21
Large Format Printers	21

TM-Printers and Colorworks	22
Support Software List ARM64 for Windows10	23
FAQ	26
What is ARM?	26
So why the change to ARM processors?	26
What is Windows 10 ARM?	26
Support for Older Hardware Devices May Be a Problem	26
When can you expect to buy an ARM powered Device?	26

Support for Windows 11

It has been established that your Epson product CD-ROM installation disc may not contain the most up-to-date drivers for your operating system. If Epson has a Windows 11 driver for your product, it will be available on your product's support page. To check if the driver is available, do the following:

- Go to the Epson Support page and search for your product.
- Select Windows 11 in the Operating System drop-down box, if necessary.

You can also obtain the latest drivers for your product from the following sites:

- <http://download.ebz.epson.net/dsc/search/01/search/searchModule>
- <http://epson.sn>

If a Windows 11 driver is not available from Epson, you can install the simple drivers that come with Windows 11. They will automatically install when your product is connected to the same network as your Windows 11 computer or connected to your Windows 11 computer with a USB cable.

Business Ink Jet Printers

Model	Windows 11 Support
L15150 Series	Yes
L15160 Series	Yes
L15180 Series	Yes
L6550 Series	Yes
L6580 Series	Yes
M15140 Series	Yes
M15180 Series	Yes

Model	Windows 11 Support
WF-C17590 Series	Yes
WF-C20590 Series	Yes
WF-M20590 Series	Yes
WF-C20600 Series	Yes
WF-C20750 Series	Yes
WF-C21000 Series	Yes
WF-M21000 Series	Yes

Model	Windows 11 Support
WF-C5290 Series	Yes
WF-C5790 Series	Yes
WF-C579R Series	Yes
WF-C869R Series	Yes
WF-C878R Series	Yes
WF-C879R Series	Yes



Ink Tank System Printers

Model	Windows 11 Support
L110 Series	Yes
L14150 Series	Yes
L1455 Series	Yes
L15150 Series	Yes
L210 Series	Yes
L220 Series	Yes
L300 Series	Yes
L3110 Series	Yes
L3150 Series	Yes
L3210 Series	Yes
L3250 Series	Yes
L350 Series	Yes
L355 series	Yes
L360 Series	Yes
L365 Series	Yes
L380 Series	Yes
L385 Series	Yes
L405 Series	Yes
L4150 Series	Yes
L4160 Series	Yes

Model	Windows 11 Support
L4260 Series	Yes
L455 Series	Yes
L485 Series	Yes
L5190 Series	Yes
L5290 Series	Yes
L550 Series	Yes
L565 Series	Yes
L605 Series	Yes
L6160 Series	Yes
L6170 Series	Yes
L6190 Series	Yes
L6270 Series	Yes
L655 Series	Yes
L850 Series	Yes
M100 Series	Yes
M15140 Series	Yes
M200 Series	Yes
M2140 Series	Yes
M3170 Series	Yes

Model	Windows 11 Support
PictureMate PM245	Yes
WF-2630 Series	Yes
WF-2650 Series	Yes
WF-2660 Series	Yes
WF-2850 Series	Yes
WF-2860 Series	Yes
WF-3520 Series	Yes
WF-3620 Series	Yes
WF-3720 Series	Yes
WF-5110 Series	Yes
WF-5620 Series	Yes
WF-7610 Series	Yes
WF-7620 Series	Yes
WF-7710 Series	Yes
XP-200 Series	Yes
XP-2100 Series	Yes
XP-225 Series	Yes
XP-235 Series	Yes
XP-400 Series	Yes

Laser Printer

Model	Windows 11 Support
AcuLaser M2300/M2310	Yes
AcuLaser M2400/M2410	Yes
AcuLaser M4000	Yes
AcuLaser M7000N	Yes
AcuLaser M300D/DN	Yes
AcuLaser M310DN	Yes
AcuLaser M320DNN	Yes

Model	Windows 11 Support
AcuLaser M400DN	Yes
AcuLaser C2800	Yes
AcuLaser C9200	Yes
AcuLaser C9300N	Yes
AcuLaser C9500DN	Yes
AcuLaser C300	Yes
AcuLaser C500DN	Yes

Model	Windows 11 Support
AcuLaser M220D	Yes



Large Format Printers

Model	Windows 11 Support
SC-B7070	Yes
SC-B9070	Yes
SC-F10030	Yes
SC-F10030H	Yes
SC-F130	Yes
SC-F2000	Yes
SC-F2130	Yes
SC-F530/F531	Yes
SC-F6270	Yes
SC-F7070	Yes
SC-F7170	Yes
SC-F7270	Yes
SC-F9270	Yes
SC-F9330	Yes
SC-F9430	Yes
SC-F9430H	Yes
SC-P10070	Yes
SC-P20070	Yes
SC-P407	Yes

Model	Windows 11 Support
SC-P5000	Yes
SC-P6000/P8000 Series	Yes
SC-P607	Yes
SC-P7000/P9000 Series	Yes
SC-P703	Yes
SC-P7530/P9530	Yes
SC-P807	Yes
SC-P903	Yes
SC-R5030	Yes
SC-R5030L	Yes
SC-S30670	Yes
SC-S40670	Yes
SC-S50670	Yes
SC-S60670	Yes
SC-S70670	Yes
SC-S80670	Yes
SC-T2100 Series	Yes
SC-T3000/T5000/T7000 Series	Yes
SC-T3100/T5100 Series	Yes

Model	Windows 11 Support
SC-T3100D Series	Yes
SC-T3100X Series	Yes
SC-T3200/T5200/T7200 Series	Yes
SC-T3400/T5400 Series	Yes
SC-T3400M/T5400M Series	Yes
SC-T3405/T5405 Series	Yes
SC-T5200D/T7200D Series	Yes
SC-T5400M Series	Yes
SC-T5405D Series	Yes
SC-T5405DM Series	Yes
SL-D3000	Yes
SL-D700	Yes
Stylus Pro 3885	Yes
Stylus Pro 4900	Yes
Stylus Pro 7890/9890	Yes
Stylus Pro 7900/9900	Yes
Stylus Pro WT7900	Yes
SureColor S60670L Printer	Yes
SureColor S80670L Printer	Yes

SIDM

Model	Windows 11 Support
DFX-9000	Yes
DLQ-3500	Yes
DLQ-3500II	Yes
DLQ-3500IIN	Yes
FX-2190II	Yes
FX-2190IIN	Yes
LQ-2090	Yes
LQ-2190	Yes

Model	Windows 11 Support
LQ-310/350	Yes
LQ-590II/2090II	Yes
LQ-590IIN/2090IIN	Yes
LQ-680Pro	Yes
LX-310/350	Yes
PLQ-20	Yes
PLQ-20D	Yes
PLQ-22CS	Yes

Model	Windows 11 Support
PLQ-22CSM	Yes
PLQ-30	Yes
PLQ-30M	Yes
PLQ-35	Yes
PLQ-50	Yes
PLQ-50CS	Yes
PLQ-50CSK	Yes
PLQ-50CSM	Yes
PLQ-50M	Yes

Scanner

Model	Windows 11 Support
DS-1630	Yes
DS-30	Yes
DS-30000	Yes
DS-310	Yes
DS-32000	Yes
DS-360W	Yes
DS-410	Yes
DS-50000/60000/70000	Yes
DS-510	Yes
DS-520	Yes
DS-530	Yes
DS-530II	Yes
DS-5500/6500/7500	Yes
DS-570W	Yes

Model	Windows 11 Support
DS-570WII	Yes
DS-730N	Yes
DS-770	Yes
DS-770II	Yes
DS-780N	Yes
DS-870	Yes
DS-970	Yes
ES-50	Yes
ES-580W	Yes
ES-60W	Yes
Expression 10000XL	Yes
Expression 11000XL	Yes
Expression 12000XL	Yes
GT-15000	Yes

Model	Windows 11 Support
GT-20000	Yes
GT-30000	Yes
GT-S50	Yes
GT-S55	Yes
GT-S80	Yes
GT-S85	Yes
Perfection V30/V300	Yes
Perfection V33/V330	Yes
Perfection V37/V370	Yes
Perfection V39	Yes
Perfection V600	Yes
Perfection V700/V750	Yes
Perfection V800 Photo	Yes
Perfection V850 Pro	Yes



FAQ

A Windows 11 driver is not available for my printer or all-in-one on my product's support page. How do I use my product with Windows 11?

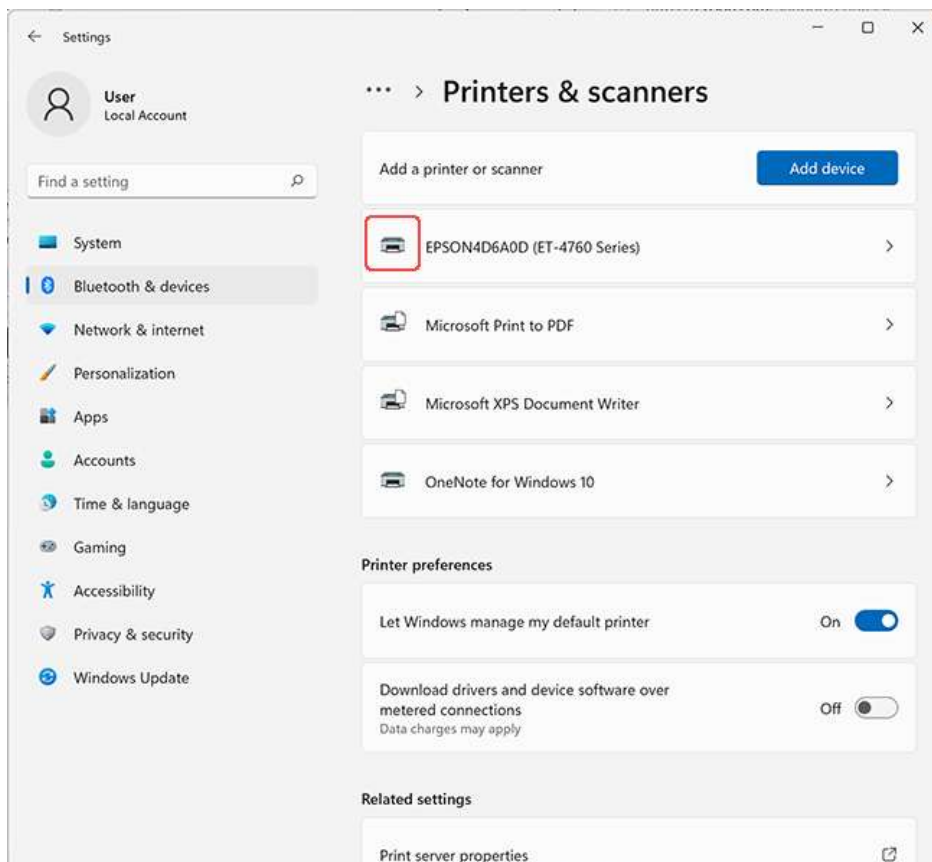
You can install the simple drivers that come with Windows 11. They will automatically install when your product is connected to the same network as your Windows 11 computer or connected to your Windows 11 computer with a USB cable. To install the drivers, do the following:

1. Turn on your Windows 11 computer and make sure it's connected to the Internet.
2. Connect your product to the same network your computer is connected to or connect your product to your computer with a USB cable. Windows 11 will automatically install the simple drivers for your product.
3. Select Bluetooth & devices > Printers & scanners.



To verify that the drivers are installed correctly, do the following:

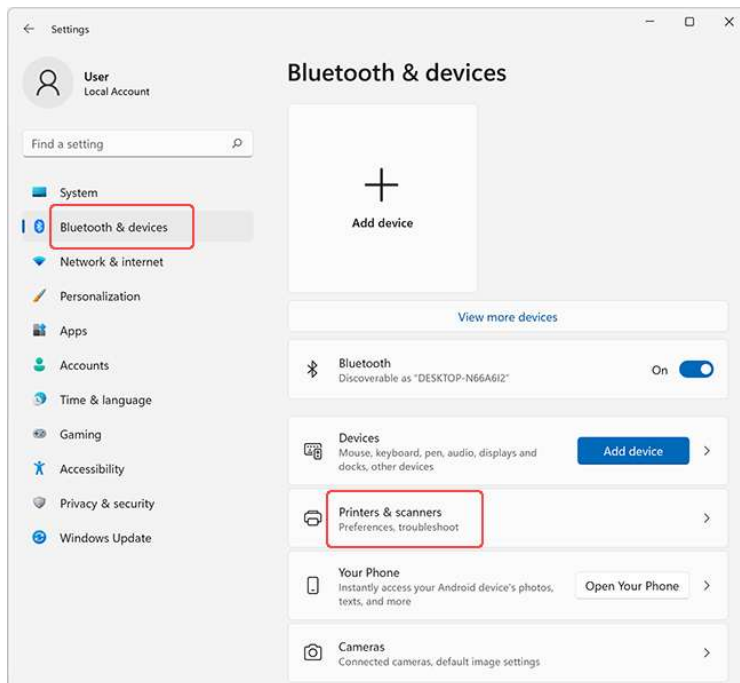
- a. Select  >  Settings.
- b. Select Bluetooth & devices > Printers & scanners.

An icon for your printer or all-in-one should appear.

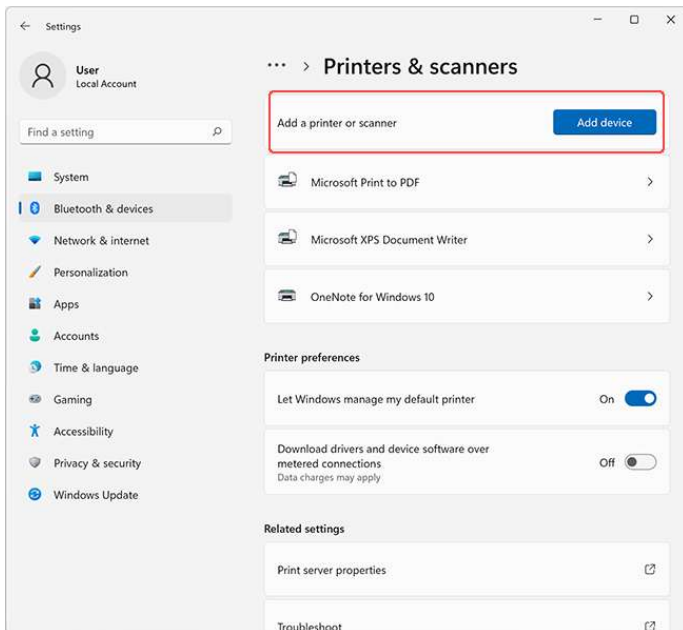


Windows 11 did not automatically install a simple driver for my printer or all-in-one. How do I install the simple driver?

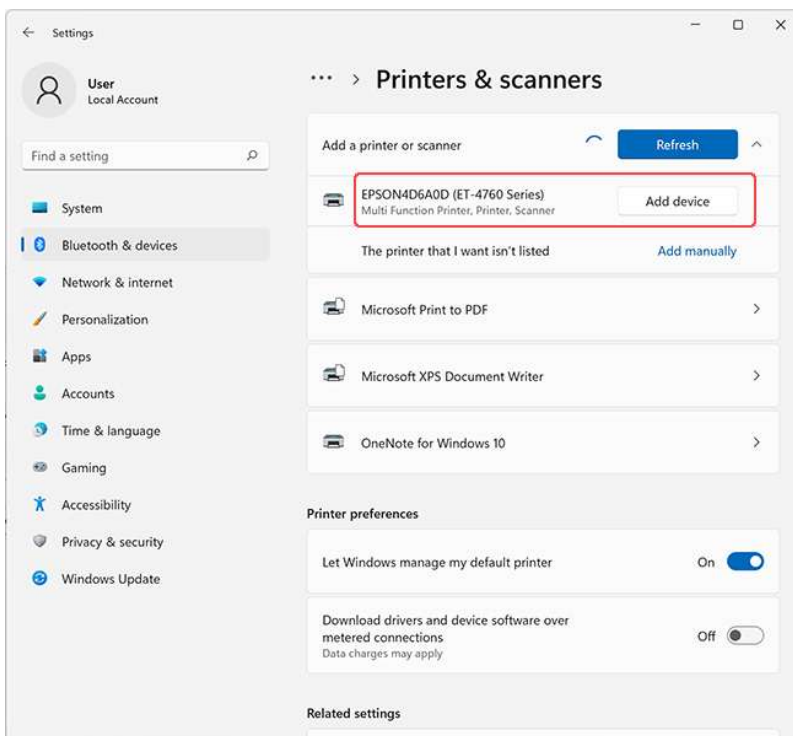
1. Do one of the following:
 - a. Wi-Fi or Ethernet: Connect your printer and computer to the same network, then go to the next step.
 - b. USB: When you connect your printer to your computer, the simple driver should automatically install. If it installs, you are done and do not need to go to the next step. If it does not install, go to the next step.
2. Select  >  Settings.
3. Select Bluetooth & devices > Printers & scanners.



4. Select **Add Device** next to the Add a printer or scanner prompt.



5. Select the Add Device button next to your printer's name.



After the installation is complete, your printer is ready to print.

Epson Scan is not available for my product for Windows 11. What should I do?

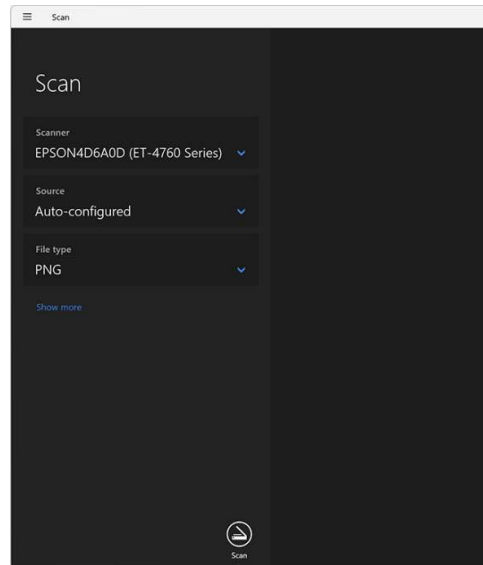
Use the Windows Scan app to scan. To install the app, do the following:

Note: Scanning requires an Internet connection.

1. Download the **Windows Scan** app from the Microsoft Store.
2. Open Windows Scan.

Note: Windows Scan is listed as **Scan** in the Windows Start Menu.

Select your scanner and options as necessary, and then select the **Scan** button.



Windows 11 24H2 / Windows Server 2025

Here you can find out how to get drivers and other Epson software for your Epson product that work with Windows 11 24H2 updates and Windows Server 2025.

- Please refer to the Drivers and Downloads section of the Support site to obtain new drivers as they become available.
- To obtain the latest drivers for your product, please visit the following sites:
<http://download.ebz.epson.net/dsc/search/01/search/searchModule>
<http://epson.sn>

Features of Windows 11 24H2 / Server 2025

Excerpts of new features

- Enhanced security
 - Added Windows Protected Print (WPP) function.

FAQ

What is Windows Protected Print (WPP)?

Windows Protected Print (WPP) mode provides additional print security benefits on PCs. Only OS standard Internet Printing Protocol (IPP) Class drivers can be used.

What happens when Windows Protected Print (WPP) is turned ON?

Pre-installed Epson drivers and software will be deleted. If you try to install the drivers, an error will occur, and installation cannot be completed.

Can I still print with Windows Protected Print (WPP) mode turned ON?

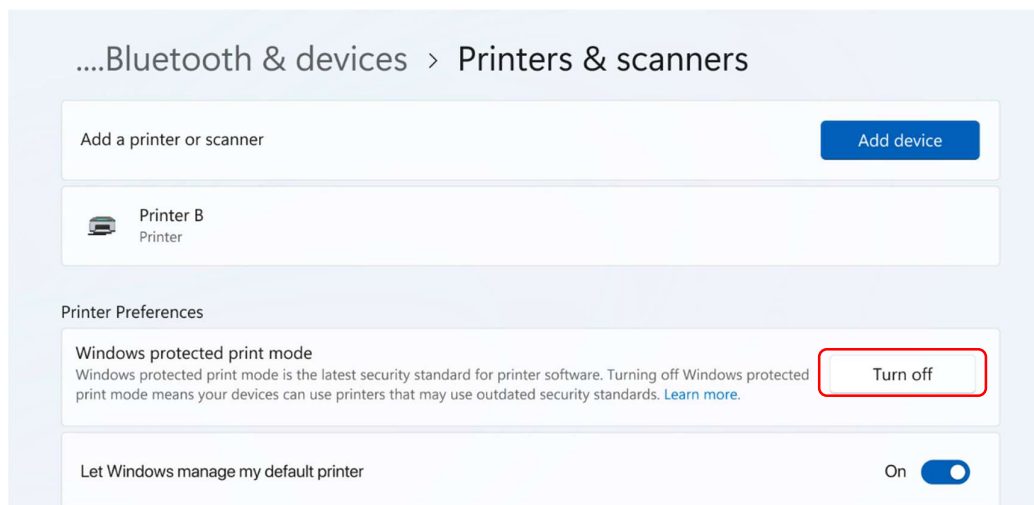
Yes, however only Internet Printing Protocol (IPP) Class drivers can be used.

- Less functional than EPSON drivers.
- Usable printer models are limited.

How to disable Windows Protected Print (WPP) mode?

By default, Windows Protected Print (WPP) mode is turned OFF.

1. Select **Start**.
2. Navigate to **Settings > Bluetooth & Devices > Printers & scanners**.
3. Scroll down to **Printer Preferences** and under **Windows protected print mode**, select **Turn OFF**.



Support for Windows 10 Oct 2018 Update

Here you can find out how to get drivers and other Epson software for your Epson product that work with Windows 10 April 2018 Update (v1809).

- Check your Epson product CD to see if it already contains drivers for Windows 10. If the CD indicates support for Windows 10, follow the instructions that came with your Epson product to install the drivers and other software.
- If your Epson CD does not indicate support for Windows 10, please refer to the Drivers and Downloads section of the Support site to obtain new drivers as they become available. Do not insert your Epson product software CD into your computer at this time.
- To obtain the latest drivers for your product, please visit the following sites:
<http://download.ebz.epson.net/dsc/search/01/search/searchModule>
<http://epson.sn>

Ink Jet Printers

Business Printers

Epson B-300	Epson B-310N	Epson B-500DN
Epson B-510DN	Epson K100	Epson K200
Epson K300	Epson Workforce Pro WP-4011	Epson Workforce Pro WP-4091
Epson Workforce Pro WP-4511	Epson Workforce Pro WP-4521	Epson Workforce WF-100
Epson Workforce WF-2528	Epson Workforce WF-2538	Epson Workforce WF-2548
Epson Workforce WF-2631	Epson Workforce WF-2651	Epson Workforce WF-2661
Epson Workforce WF-2861	Epson Workforce WF-3011	Epson Workforce WF-3521
Epson Workforce Pro WF-3721	Epson Workforce Pro WF-5111	Epson Workforce Pro WF-5621
Epson Workforce Pro WF-C5290	Epson Workforce Pro WF-C5790	Epson Workforce Pro WF-6091
Epson Workforce WF-7011	Epson Workforce WF-7111	Epson Workforce WF-7211
Epson Workforce WF-7511	Epson Workforce WF-7611	Epson Workforce WF-7711
Epson Workforce Pro WF-R8591	Epson Workforce Pro WF-C869R	Epson Workforce Enterprise WF-C17590
Epson Workforce Enterprise WF-C20590		

Home & SOHO Document Printers

Epson Expression Home XP-30	Epson Expression Home XP-102	Epson Expression Home XP-202
Epson Expression Home XP-225	Epson Expression Home XP-245	Epson Expression Home XP-402
Epson Expression Home XP-422	Epson Expression Home XP-442	Epson Expression ME-10
Epson Expression ME-101	Epson Expression ME-301	Epson ME 200
Epson ME 30	Epson ME 300	Epson ME 32
Epson ME 320	Epson ME 340	Epson ME 35
Epson ME OFFICE 535	Epson ME Office 600F	Epson ME OFFICE 620F
Epson ME OFFICE 82WD	Epson ME OFFICE 900WD	Epson ME OFFICE 960FWD
Epson PictureMate 100	Epson PictureMate PM 210	Epson PictureMate PM 235
Epson PictureMate PM 245	Epson PictureMate PM 250	Epson PictureMate PM 270
Epson PictureMate PM 310	Epson Stylus C110	Epson Stylus C43



Epson Stylus C60
Epson Stylus C65
Epson Stylus C80
Epson Stylus C90
Epson Stylus CX3500
Epson Stylus CX4500
Epson Stylus CX5500
Epson Stylus CX6900F
Epson Stylus CX9300F
Epson Stylus Office T40W
Epson Stylus Office TX510FN
Epson Stylus Office TX620FWD
Epson Stylus Photo 2100
Epson Stylus Photo 830U
Epson Stylus Photo 935
Epson Stylus Photo R230
Epson Stylus Photo R270
Epson Stylus Photo R350
Epson Stylus Photo RX610
Epson Stylus Photo T60
Epson Stylus Photo TX720WD
Epson Stylus SX200
Epson Stylus T10
Epson Stylus T20
Epson Stylus TX110
Epson Stylus TX200

Epson Stylus C61
Epson Stylus C67
Epson Stylus C82
Epson Stylus CX2800
Epson Stylus CX3900
Epson Stylus CX4700
Epson Stylus CX5900
Epson Stylus CX7300
Epson Stylus Office T1110
Epson Stylus Office TX300F
Epson Stylus Office TX525FW
Epson Stylus Photo 1270
Epson Stylus Photo 810
Epson Stylus Photo 890
Epson Stylus Photo R1800
Epson Stylus Photo R2400
Epson Stylus Photo R290
Epson Stylus Photo R390
Epson Stylus Photo RX650
Epson Stylus Photo TX650
Epson Stylus S20
Epson Stylus SX400
Epson Stylus T11
Epson Stylus T20E
Epson Stylus TX111
Epson Stylus TX220

Epson Stylus C63
Epson Stylus C79
Epson Stylus C83
Epson Stylus CX3100
Epson Stylus CX4100
Epson Stylus CX5300
Epson Stylus CX6500
Epson Stylus CX8300
Epson Stylus Office T30
Epson Stylus Office TX320F
Epson Stylus Office TX600FW
Epson Stylus Photo 1390
Epson Stylus Photo 830
Epson Stylus Photo 900
Epson Stylus Photo R210
Epson Stylus Photo R250
Epson Stylus Photo R310
Epson Stylus Photo R800
Epson Stylus Photo T50
Epson Stylus Photo TX700W
Epson Stylus SX100
Epson Stylus SX600FW
Epson Stylus T13
Epson Stylus TX100
Epson Stylus TX121
Epson Stylus TX550W

Ink Tank System Printers

Epson L100
Epson L200
Epson L350
Epson L365
Epson L405
Epson L550
Epson L605
Epson L850
Epson L6160
Epson L1300
Epson L3110

Epson L110
Epson L210
Epson L355
Epson L380
Epson L455
Epson L555
Epson L655
Epson L4150
Epson L6170
Epson L1455
Epson L3150

Epson L120
Epson L220
Epson L360
Epson L385
Epson L485
Epson L565
Epson L800
Epson L4160
Epson L6190
Epson L1800

Large Format Printers

Epson Stylus Photo R1900
Epson Stylus Pro 10600

Epson Stylus Photo R2000
Epson Stylus Pro 11880

Epson Stylus Photo R3000
Epson Stylus Pro 3850

Epson Stylus Pro 3885	Epson Stylus Pro 4000	Epson Stylus Pro 4400
Epson Stylus Pro 4450	Epson Stylus Pro 4800	Epson Stylus Pro 4880
Epson Stylus Pro 4900	Epson Stylus Pro 7400	Epson Stylus Pro 7450
Epson Stylus Pro 7600	Epson Stylus Pro 7700	Epson Stylus Pro 7800
Epson Stylus Pro 7880	Epson Stylus Pro 7890	Epson Stylus Pro 7900
Epson Stylus Pro 9400	Epson Stylus Pro 9450	Epson Stylus Pro 9600
Epson Stylus Pro 9700	Epson Stylus Pro 9800	Epson Stylus Pro 9880
Epson Stylus Pro 9890	Epson Stylus Pro 9900	Epson SureColor SC-P407
Epson SureColor SC-P607	Epson SureColor SC-P807	Epson SureColor SC-T3070 Series
Epson SureColor SC-T3270 Series	Epson SureColor SC-T5070 Series	Epson SureColor SC-T5270 Series
Epson SureColor SC-T7070 Series	Epson SureColor SC-T7270 Series	Epson SureColor SC-P6000
Epson SureColor SC-P7000	Epson SureColor SC-P8000	Epson SureColor SC-P9000
Epson SureColor SC-P10070	Epson SureColor SC-P20070	

TM-Printers and Colorworks

TM-T81II	TM-H6000V	TM-T82
TM-T81III	TM-L500A	TM-T82II
TM-U220A	TM-L90	TM-T82III
CW-C6050A	TM-L90-LFC	TM-T82X
CW-C6050P	TM-L90-Peeler	TM-T88V
CW-C6550A	TM-m10	TM-T88VI
CW-C6550P	TM-m30	TM-T88VI-ihub
GP-C830	TM-m30II	TM-U220A
pp-100II	TM-m30II-H	TM-U220B
pp-100III	TM-m30II-NT	TM-U220D
pp-100N	TM-P20	TM-U295
TM-C3400	TM-P80	TM-U330
TM-C3510	TM-S2000MJ	TM-U590
TM-C7510	TM-S2000MJ (UV)	TM-U675
TM-C7510G	TM-T70II	TM-U950

Laser Printers

Epson AcuLaser AL-M1400	Epson AcuLaser AL-MX14	Epson AcuLaser AL-MX14NF
Epson AcuLaser AL-M200DN	Epson AcuLaser AL-MX200DNF	Epson AcuLaser AL-M2010
Epson AcuLaser AL-M2310	Epson AcuLaser AL-M2410	Epson AcuLaser AL-M4000
Epson AcuLaser AL-M7000	Epson EPL-6200L	Epson EPL-N3000
Epson Workforce AL-M300D	Epson Workforce AL-M300DN	Epson Workforce AL-M310DN
Epson Workforce AL-M320DN	Epson Workforce AL-M400DN	Epson Workforce AL-M8100DN
Epson AcuLaser AL-C1700	Epson AcuLaser AL-CX17NF	Epson AcuLaser AL-C500DN
Epson AcuLaser AL-C2600	Epson AcuLaser AL-C2800N	Epson AcuLaser AL-C2900N
Epson AcuLaser AL-C3800DN	Epson AcuLaser AL-C3900DN	Epson AcuLaser AL-CX37DN
Epson AcuLaser AL-C4200DN	Epson AcuLaser AL-C8600	Epson AcuLaser AL-C9100N
Epson AcuLaser AL-C9200N	Epson AcuLaser AL-C9300N	Epson Workforce AL-C300DN

* TBD. Not fully supported at the moment

Scanners

Epson Workforce DS-30	Epson Workforce DS-310	Epson Workforce DS-360W
Epson Workforce DS-410	Epson Workforce DS-510	Epson Workforce DS-520
Epson Workforce DS-530	Epson Workforce DS-570W	Epson Workforce DS-770
Epson Workforce DS-780N	Epson Workforce DS-860	Epson Workforce DS-1630
Epson Workforce DS-6500	Epson Workforce DS-7500	Epson Workforce DS-50000
Epson Workforce DS-60000	Epson Workforce DS-70000	Epson Expression 10000XL
Epson Expression 11000XL	Epson Expression 12000XL	Epson Expression 1600
Epson Expression 1680	Epson GT-10000+	Epson GT-1500
Epson GT-15000	Epson GT-20000	Epson GT-2500
Epson GT-S50	Epson GT-S55	Epson GT-S80
Epson GT-S85	Epson Perfection 1200	Epson Perfection 1240
Epson Perfection 1250	Epson Perfection 1260	Epson Perfection 1640
Epson Perfection 1650	Epson Perfection 1660	Epson Perfection 1670
Epson Perfection 2400	Epson Perfection 2450	Epson Perfection 2480/2580
Epson Perfection 3170	Epson Perfection 3200	Epson Perfection 3490/3590
Epson Perfection 4180	Epson Perfection 4490	Epson Perfection 4870
Epson Perfection 4990	Epson Perfection 610	Epson Perfection 640
Epson Perfection V10	Epson Perfection V100	Epson Perfection V200
Epson Perfection V30	Epson Perfection V300	Epson Perfection V33
Epson Perfection V330	Epson Perfection V350	Epson Perfection V37
Epson Perfection V370	Epson Perfection V39	Epson Perfection V500
Epson Perfection V600	Epson Perfection V700	Epson Perfection V800

Software Compatibility

<u>Drivers</u>	Inkjet	Business Inkjet	Laser Printer	LFP	TM Printers	CW	Scanner	Version
ESC/P Printer Driver	Y	Y	-	Y	-	-	-	-
ESC/Page Printer Driver	-	-	Y	-	-	-	-	-
WF-100 inbox driver	-	Y	-	-	-	-	-	1.01
Universal Printer Driver	Y	Y	Y	-	-	-	-	2.70.00
PS Printer Driver (BIJ)	-	Y	-	-	-	-	-	-
PS Printer Driver (LP)	-	-	Y	-	-	-	-	-
PS Printer Driver (Adobe BIJ/LP)	-	Y	Y	-	-	-	-	-
PS Printer Driver (LFP)	-	-	-	Y	-	-	-	6.77 (Fusion) 7.10 (Opera-ADMR) 6.70(Lafin2)
Remote Print Driver	Y	Y	-	-	-	-	-	1.66
Epson Print Admin Driver	-	Y	-	-	-	-	-	2.65
Epson Scan	Y	Y	Y	-	-	-	Y	-
Epson Scan2	Y	Y	Y	-	-	-	Y	-
EMC ISIS Driver	-	-	-	-	-	-	Y	-
Scan OCR Component	Y	Y	Y	-	-	-	Y	-
Scan PDF Extensions	-	Y	Y	-	-	-	Y	-

<u>Utilities</u>	Inkjet	Business Inkjet	Laser Printer	LFP	TM Printers	CW	Scanner	Version
Installer Package	Y	Y	Y	Y	-	-	Y	-
Epson Install Navi	Y	Y	Y	Y	-	Y	Y	-
Software Updater	Y	Y	-	Y	-	-	Y	4.5.1
Firmware Updater	Y	Y	Y	Y	-	Y	Y	-
EpsonNet Print	Y	Y	Y	-	-	-	-	3.1.4
EpsonNet Setup	Y	Y	Y	Y	-	-	Y	-
EpsonNet Config	Y	Y	Y	Y	Y	Y	Y	-
EpsonNet SetupManager	-	Y	Y	-	-	Y	Y	-
Epson Device Admin	Y	Y	Y	Y	-	Y	Y	-
eRegister	-	-	Y	-	-	-	-	-

Epson Connect Printer Setup	Y	Y	Y	-	-	-	-	1.4.1
Epson Printer Finder	Y	Y	-	-	-	-	-	-
MyEpson Portal / Connect	Y	Y	-	-	-	-	-	1.1.2.8
Customer Participation	Y	Y	-	Y	-	-	-	1.8.4.1
Manual Launcher	Y	Y	-	Y	-	-	Y	1.54.1
Epson Printer Connection Checker	Y	-	-	-	-	-	-	3.1.0

<u>Applications</u>	Inkjet	Business Inkjet	Laser Printer	LFP	TM Printers	CW	Scanner	Version
Easy Photo Print	Y	Y	-	-	-	-	-	"WW:2.83.00
EAI:2.83.00"				-	-	-	-	
Epson Photo+	Y	Y	-	-	-	-	-	1.1.0.0
Print CD	Y	-	-	-	-	-	-	2.44.00
E-Web Print	Y	Y	Y	-	-	-	-	1.23.00
Copy Utility	-	-	-	-	-	-	Y	4.01.01
Event Manager	Y	Y	-	-	-	-	Y	3.10.42
Easy Photo Scan	Y	-	-	-	-	-	Y	1.00.10
Document Capture Pro	-	Y	Y	-	-	-	Y	1.07.12
Document Capture Pro V2	-	Y	Y	-	-	-	Y	2.00.00
FastFoto	-	-	-	-	-	-	Y	2.1.3
FAX Utility / EpsonNet PC-FAX	Y	Y	Y	-	-	-	-	"1.62.00
Epson Print and Scan	Y	Y	-	-	-	-	-	-
Power Off Timer	Y	-	-	-	-	-	-	1.0
EPSON Status Monitor	-	-	Y	-	-	-	-	-
EPSON Status Monitor	-	-		Y	-	-	-	-
Epson Connect	Y	Y		Y	-	-	Y	V456
Epson Print Admin Server	-	Y		-	-	-	-	2.2.0
Epson Print Admin Notifier	-	Y		-	-	-	-	2.2.0
Device Status System	Y	Y		Y	-	-	-	2.7.0001
EPSON Barcode Font	-	-		Y	-	-	-	1.1.11



Epson and Windows 10 ARM64

Windows 10 ARM64 will support some Epson printers right out of the box, at the moment all Epson scanners are not supported by Windows 10 ARM64.

You can check the compatibility from the below table.

Ink Jet Printers

Model Name	Windows10(ARM64) Supported by		
	Epson Driver	Windows update driver	Windows Inbox driver
L1110 Series	-	Y	-
L1210 Series	-	Y	-
L1250 Series	-	Y	-
L14150 Series	-	Y	-
L1455 Series	-	Y	-
L15150 Series	-	Y	-
L15160 Series	-	Y	-
L15180 Series	-	Y	-
L3110 Series	-	Y	-
L3150 Series	-	Y	-
L3210 Series	-	Y	-
L3250 Series	-	Y	-
L380 Series	-	Y	-
L385 Series	-	Y	-
L405 Series	-	Y	-
L4150 Series	-	Y	-
L4160 Series	-	Y	-
L4260 Series	-	Y	-
L485 Series	-	Y	-
L5190 Series	-	Y	-
L5290 Series	-	Y	-
L605 Series	-	Y	-
L6160 Series	-	Y	-
L6170 Series	-	Y	-
L6190 Series	-	Y	-
L6260 Series	-	Y	-
L6270 Series	-	Y	-
L6290 Series	-	Y	-
L6460 Series	-	Y	-
L6490 Series	-	Y	-
L655 Series	-	Y	-
L6550 Series	-	Y	-
L6580 Series	-	Y	-
L805 Series	-	Y	-
M1100 Series	-	Y	-
M1120 Series	-	Y	-

Model Name	Windows10(ARM64) Supported by		
	Epson Driver	Windows update driver	Windows Inbox driver
M15140 Series	-	Y	-
M15180 Series	-	Y	-
M2140 Series	-	Y	-
M3170 Series	-	Y	-
PM-520 Series	-	Y	-
PM-520 Series	-	Y	-
WF-100 Series	-	Y	-
WF-2850 Series	-	Y	-
WF-2860 Series	-	Y	-
WF-3720 Series	-	Y	-
WF-7210 Series	-	Y	-
WF-7710 Series	-	Y	-
WF-C17590 Series	-	Y	-
WF-C20590 Series	-	Y	-
WF-C20600 Series	-	Y	-
WF-C20750 Series	-	Y	-
WF-C21000 Series	-	Y	-
WF-C5210 Series	-	Y	-
WF-C5290 Series	-	Y	-
WF-C529R Series	-	Y	-
WF-C529R Series	-	Y	-
WF-C5710 Series	-	Y	-
WF-C5790 Series	-	Y	-
WF-C579R Series	-	Y	-
WF-C869R Series	-	Y	-
WF-C878R Series	-	Y	-
WF-C879R Series	-	Y	-
WF-M20590 Series	-	Y	-
WF-M21000 Series	-	Y	-
WF-R8590 Series	-	-	-
XP-2100 Series	-	Y	-
XP-220 Series	-	Y	-
XP-243 245 247 Series	-	Y	-
XP-4100 Series	-	Y	-
XP-440 Series	-	Y	-
XP-442 445 Series	-	Y	-

EPSON

M1140 Series	-	Y	-
--------------	---	---	---

--	--	--	--

SIDM Printers

Model Name	Windows10(ARM64) Supported by		
	Epson Driver	Windows update driver	Windows Inbox driver
LX-310/350	-	-	Y
DFX-9000	-	-	-
FX-2190II	-	-	Y
FX-2190IIN	-	-	Y
FX-2175II	-	-	Y
FX-2175IIN	-	-	Y
LQ-310/350	-	-	Y
LQ-2090	-	-	Y
LQ-630	-	-	-
LQ-680Pro	-	-	-
LQ-2190	-	-	Y

Model Name	Windows10(ARM64) Supported by		
	Epson Driver	Windows update driver	Windows Inbox driver
DLQ-3500II	-	-	Y
DLQ-3500IIN	-	-	Y
PLQ-20	-	-	-
PLQ-20D	-	-	-
PLQ-22CS	-	-	-
PLQ-22CSM	-	-	-
PLQ-30	-	-	Y
PLQ-30M	-	-	Y
LQ-590II/2090II	-	-	Y
LQ-590IIN/2090IIN	-	-	Y

Laser Printers

Model Name	Windows10(ARM64) Supported by		
	Epson Driver	Windows update driver	Windows Inbox driver
AcuLaser C1600	-	-	-
AcuLaser C1700	-	-	-
AcuLaser C1750	-	-	-
AcuLaser C2800	-	-	-
AcuLaser C2900	-	-	-
AcuLaser C300	-	-	-
AcuLaser C3900	-	-	-
AcuLaser C9200	-	-	Y
AcuLaser C9300	-	-	Y
AcuLaser CX37	-	-	-

Model Name	Windows10(ARM64) Supported by		
	Epson Driver	Windows update driver	Windows Inbox driver
AcuLaser M1400	-	-	-
AcuLaser M2010	-	-	-
AcuLaser M2310	-	-	Y
AcuLaser M2410	-	-	Y
AcuLaser M310	-	-	Y
AcuLaser M320	-	-	Y
AcuLaser M400	-	-	Y
AcuLaser M4000	-	-	Y
AcuLaser M8100	-	-	Y

Large Format Printers

Model Name	Windows10(ARM64) Supported by		
	Epson Driver	Windows update driver	Windows Inbox driver
Stylus Photo R1800	-	-	-
Stylus Photo R2400	-	-	-
Stylus Photo R1900	-	-	-
Stylus Photo R2880	-	-	-
Stylus Photo R3000	-	-	-
Stylus Photo R2000	-	-	-
SC-P600 Series	-	-	Y
SC-P400 Series	-	-	Y
SC-P700 Series	-	-	Y

Model Name	Windows10(ARM64) Supported by		
	Epson Driver	Windows update driver	Windows Inbox driver
SC-P9000/P7000 Series	-	-	-
SC-P8000/P6000 Series	-	-	-
SC-P9500/P7500 Series	-	-	-
SC-T3000/T5000/T7000 Series	-	-	-
SC-T3200/T5200/T7200 Series	-	-	-
SC-T5200D/T7200D Series	-	-	-
SC-T5400M Series	-	-	-
SC-T5405D Series	-	-	-
SC-T5405DM Series	-	-	-



Stylus Pro 3800	-	-	-
Stylus Pro 3880	-	-	-
SC-P800 Series	-	-	Y
SC-P900 Series	-	-	Y
Stylus Pro 4800/4400	-	-	-
Stylus Pro 4880	-	-	-
Stylus Pro 4450	-	-	-
Stylus Pro 4900	-	-	-
SC-P5000 Series	-	-	-
Stylus Pro WT7900	-	-	-
SC-F500 Series	-	-	-
SC-T3100X Series	-	-	-
SC-T3100D Series	-	-	-
SC-T2100 Series	-	-	-
SC-T5100/T3100 Series	-	-	-
SC-T5400/T3400 Series	-	-	-
SC-T5405/T3405 Series	-	-	-
Stylus Pro 9800/7800	-	-	-
Stylus Pro 9400/7400	-	-	-
Stylus Pro 9880/7880	-	-	-
Stylus Pro 9450/7450	-	-	-
Stylus Pro 9900/7900	-	-	-
Stylus Pro 9700/7700	-	-	-
Stylus Pro 9890/7890	-	-	-

Stylus Pro 9860/9906D	-	-	-
SC-F6000 Series	-	-	-
SC-B6000 Series	-	-	-
SC-F6200 Series	-	-	-
SC-P10000 Series	-	-	-
SC-P10000D Series	-	-	-
Stylus Pro 11880	-	-	-
Stylus Pro GS6000	-	-	-
SC-S30600 Series	-	-	-
SC-S50600 Series	-	-	-
SC-S70600 Series	-	-	-
SC-F7000 Series	-	-	-
SC-B7000 Series	-	-	-
SC-F7100 Series	-	-	-
SC-F7200 Series	-	-	-
SC-F9200 Series	-	-	-
SC-S40600 Series	-	-	-
SC-S60600 Series	-	-	-
SC-S80600 Series	-	-	-
SC-P20000 Series	-	-	Y
SC-B9000 Series	-	-	-
SC-F9300 Series	-	-	-
SC-F2000 Series	-	-	-
SC-F2100 Series	-	-	-

TM-Printers and Colorworks

Model Name	Windows10(ARM64) Supported by		
	Epson Driver	Windows update driver	Windows Inbox driver
TM-T81II	-	-	-
TM-T81III	-	-	-
TM-U220A	-	-	-
CW-C6050A	-	-	-
CW-C6050P	-	-	-
CW-C6550A	-	-	-
CW-C6550P	-	-	-
GP-C830	-	-	-
pp-100II	-	-	-
pp-100III	-	-	-
pp-100N	-	-	-
TM-C3400	-	-	-
TM-C3510	-	-	-

Model Name	Windows10(ARM64) Supported by		
	Epson Driver	Windows update driver	Windows Inbox driver
TM-m30II-NT	-	-	-
TM-P20	-	-	-
TM-P80	-	-	-
TM-S2000MJ	-	-	-
TM-S2000MJ (UV)	-	-	-
TM-T70II	-	-	-
TM-T82	-	-	-
TM-T82II	-	-	-
TM-T82III	-	-	-
TM-T82X	-	-	-
TM-T88V	-	-	-
TM-T88VI	-	-	-
TM-T88VI-ihub	-	-	-

TM-C7510	-	-	-
TM-C7510G	-	-	-
TM-H6000V	-	-	-
TM-L500A	-	-	-
TM-L90-LFC	-	-	-
TM-L90-Peeler	-	-	-
TM-m10	-	-	-
TM-m30	-	-	-
TM-m30II	-	-	-
TM-m30II-H	-	-	-

TM-U220A	-	-	-
TM-U220B	-	-	-
TM-U220D	-	-	-
TM-L90	-	-	-
TM-U295	-	-	-
TM-U330	-	-	-
TM-U590	-	-	-
TM-U675	-	-	-
TM-U950	-	-	-

Support Software List ARM64 for Windows10

Software		support (ARM64)	Note
Windows (Client)			
Drivers	Printer Driver(IJ)	Yes	Supported by Windows inbox driver (features are limited).
	Printer Driver(LP)	Yes	Supported by Windows inbox driver (features are limited).
	Printer Driver(LFP)	A2A3: Yes Others: No	A2/A3 models supported by Windows inbox driver (features are limited). Other Large Formats are realistically unusable with inbox drivers, so Not Supported.
	Printer Driver(SIDM)	Yes	Supported by Windows inbox driver (features are limited).
	WF-100 in-box driver	No	Not supported
	Universal Printer Driver	No	
	PCL Printer Driver (BIJ/LP)	No	
	PS Printer Driver (BIJ)	No	Not supported
	PS Printer Driver (LP)	No	Not supported
	PS Printer Driver (Adobe BIJ/LP)	No	Not supported
	PS Printer Driver (LFP)	No	Not supported
	Remote Print Driver	No	Not supported
	Epson Print Admin Driver	No	
	Epson Scan	No	Not supported
	Epson Scan2	No	Not supported
	EMC ISIS Driver	No	Requires EPSON Scan or Epson Scan 2, which are currently not supported.
	Scan OCR Component	No	Requires EPSON Scan or Epson Scan 2, which are currently not supported.
Scan PDF Extensions	No	Requires EPSON Scan or Epson Scan 2, which are currently not supported.	
Utilities	Installer Package	No	Requires Model-Specific Printer Driver, which is not currently supported.
	Epson Install Navi	No	Requires Model-Specific Printer Driver, which is not currently supported.

	Software Updater	No	Requires Model-Specific Printer Driver, which is not currently supported.
	Firmware Updater	No	Requires Model-Specific Printer Driver, which is not currently supported.
	EpsonNet Print	No	Requires Model-Specific Printer Driver, which is not currently supported.
	EpsonNet Setup	No	Requires Model-Specific Printer Driver, which is not currently supported.
	EpsonNet Config	Yes	
	EpsonNet SetupManager	No	Requires Model-Specific Printer Driver, which is not currently supported.
	Epson Device Admin	Yes	Restriction: Information collection for USB-connected devices is not supported. (Because ED USB Agent does not support ARM64.)
	eRegister	No	Requires Model-Specific Printer Driver, which is not currently supported.
	Epson Connect Printer Setup	No	Alternative method using Printer itself is supported.
	Epson Printer Finder	No	Requires Model-Specific Printer Driver, which is not currently supported.
	MyEpson Portal / Connect	No	Requires Model-Specific Printer Driver, which is not currently supported.
	Customer Participation	No	Requires Model-Specific Printer Driver, which is not currently supported.
	Manual Launcher	Yes	Installation requires Model-Specific Printer Driver, which is not currently supported.
	Epson Printer Connection Checker	No	Requires Model-Specific Printer Driver, which is not currently supported.
Applications	Easy Photo Print	No	Requires Model-Specific Printer Driver, which is not currently supported.
	Epson Photo+	N	Requires Model-Specific Printer Driver, which is not currently supported.
	Print CD	No	Requires Model-Specific Printer Driver, which is not currently supported.
	E-Web Print	No	Due to Microsoft Edge non-support.
	Copy Utility	No	Requires Model-Specific Printer Driver, which is not currently supported.
	Event Manager	No	Requires Epson Scan 2, which is currently not supported.
	Easy Photo Scan	No	Requires EPSON Scan or Epson Scan 2, which are currently not supported.
	Document Capture Pro	No	Requires EPSON Scan or Epson Scan 2, which are currently not supported.
	Document Capture Pro V2	No	Requires EPSON Scan or Epson Scan 2, which are currently not supported.
	FastFoto	No	Requires EPSON Scan or Epson Scan 2, which are currently not supported.
	FAX Utility / EpsonNet PC-FAX	No	Requires Model-Specific Printer Driver, which is not currently supported.
	Epson Print and Scan	No	
	Power Off Timer	No	Requires Model-Specific Printer Driver, which is not currently supported.
	EPSON Status Monitor	No	Requires Model-Specific Printer Driver, which is not currently supported.
	Epson Connect	Yes	
	Email Print for Enterprise	No	Requires Document Converter Pro, which is not currently supported.
	Epson Print Admin server	No	
Epson Print Admin Notifier	No		

Device Status System	Yes	Restriction: Information collection for USB-connected devices is not supported. (Because ED USB Agent does not support ARM64.)
EPSON Barcode Font	No	Requires Model-Specific Printer Driver, which is not currently supported.
Printer Monitoring Agent	No	Requires Model-Specific Printer Driver, which is not currently supported.
Epson Data Collection Agent	No	Requires Installer Package, which is not currently supported.
Epson DC Agent	Yes	Not support an USB connected device when is connected to Windows10 ARM64 PC and acquired its information.
Epson ScanSmart	No	Requires EPSON Scan or Epson Scan 2, which are currently not supported.

FAQ

What is ARM?

ARM is a different type of processor architecture from the standard Intel x86 and 64-bit Intel architecture used on PCs today. (Even AMD produces chips that are compatible with Intel's architecture.) Mobile devices such as iPhone, iPad, and Android phones—along with many other smaller devices—have ARM chips instead of Intel chips inside them.

So why the change to ARM processors?

Low-powered ARM PCs have some advantages over traditional x86 ones (which are most of the desktops and laptops we use today). ARM PCs have built-in LTE cellular connectivity, often offer better battery life than Intel and AMD CPUs, and the hardware is less expensive for manufacturers

What is Windows 10 ARM?

Microsoft would like Windows 10 to run on ARM hardware so it can reap those benefits. Sure, you probably won't use an ARM desktop any time soon, but ARM could be a great choice for tablets, 2-in-1 convertibles, and even smaller laptops.

Rather than creating a more limited version of Windows for this platform, like they did with the failed Windows RT, Microsoft has decided to release a full version of Windows 10 for ARM hardware, one that can even run traditional Windows desktop applications.

The resulting devices are designed to be "Always Connected" and promise up to 20 hours of active use and 700 hours of "Connected Modern Standby". And they can even run traditional Windows desktop software.

Support for Older Hardware Devices May Be a Problem

While Windows 10 on ARM can emulate traditional desktop applications, it won't be able to install hardware drivers written for traditional x86 or x64 Windows operating systems.

It will need ARM versions of those hardware drivers to support different hardware devices.

Microsoft promises that Windows 10 on ARM "will have great device support for USB peripherals using the in-box class drivers". That's great for modern USB peripherals. But read between the lines: Devices that aren't supported by the built-in drivers won't work. Printer utilities and other hardware driver utilities may not work, either. This could be an issue for older or more obscure hardware peripherals.

When can you expect to buy an ARM powered Device?

Believe it or not, the first Windows 10 on ARM device was the Asus NovoGo, which shipped before the end of 2017. Most ARM-based devices, such as the HP Envy x2 with a Qualcomm Snapdragon 835 processor, were available in 2018, but it is only now where demand is growing, and people are switching to this new system.