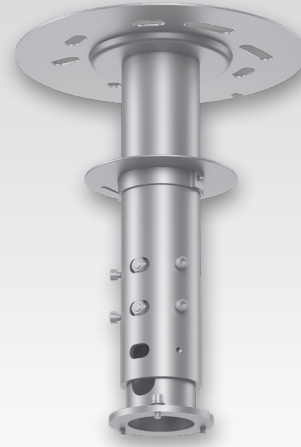


# ELPFP15 Suspension Adapter for Epson<sup>®</sup> Ceiling Mount



Projectors

Accessories

Pair with the ELPMB67 mount for high-ceiling installations.

**Ideal for high-ceiling applications** — pair with the ELPMB67 mount to support high-ceiling projector installations

**Flexible installation** — adjustable pole length of 8.7" (220 mm) to accommodate a variety of applications; mounting plate included

**Full length of mount** — 18.1" (460 mm) up to 26.8" (680 mm)

**Full unit weight** — 9.7 lb/4.4 kg

**Specifications**

**Weight** 9.7 lb/4.4 kg  
**Adjustment range** 18.1" (460 mm) ~ 26.8" (680 mm)  
**Adjustment pitch** 0.79" (20 mm) ~ 0.47" (12 mm)

**Accessories**

**Safety**  
Wire: 2pcs, Clip: 2pcs  
**Screw Set**  
Screw: M6×16, 3pcs

**Eco Features**

**RoHS compliant**  
Epson America, Inc. is a SmartWay® Transport Partner¹  
Recyclable product²

**Support**

**Epson Connection™**  
Pre-sales support: U.S. and Canada (800) 463-7766  
Internet website: [www.epson.com](http://www.epson.com)

**What's in the Box**

ELPFP15, instruction manual, decoration board

**Ordering Information**

ELPFP15 V12HA55010

¹ For convenient and reasonable recycling options, visit [www.epson.com/recycle](http://www.epson.com/recycle) | ² SmartWay is an innovative partnership of the U.S. Environmental Protection Agency that reduces greenhouse gases and other air pollutants and improves fuel efficiency.

See the latest innovations from Epson Business Solutions at [www.epson.com/forbusiness](http://www.epson.com/forbusiness)

**Better Products for a Better Future™**  
[eco.epson.com](http://eco.epson.com)



**Epson America, Inc.**  
3131 Katella Ave., Los Alamitos, CA 90720

**Epson Canada Limited**  
185 Renfrew Drive, Markham, Ontario L3R 6G3

[www.epson.com](http://www.epson.com)  
[www.epson.ca](http://www.epson.ca)

**Contact:**

EPSON is a registered trademark, EPSON Exceed Your Vision is a registered logomark and Better Products for a Better Future is a trademark of Seiko Epson Corporation. All other product and brand names are trademarks and/or registered trademarks of their respective companies. Epson disclaims any and all rights in these marks. Copyright 2021 Epson America, Inc. CPD-61187 5/21