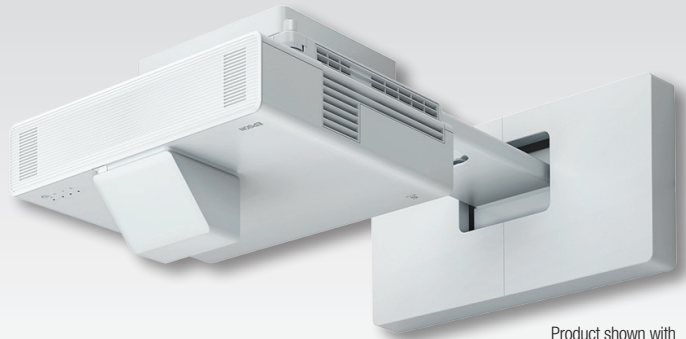


# BrightLink® 1480Fi 1080p 3LCD Interactive Laser Display



Product shown with  
mount, sold separately.

Interactive Laser Displays

Education

## Create dynamic learning environments with this 3LCD 1080p<sup>1</sup> interactive laser display.

**Super bright** — 5,000 lumens color/white brightness<sup>2</sup>; up to 1080p Full HD laser display<sup>1</sup>

**Enhance learning environments** — large, 100" display provides 75 percent larger interactive area than 75" panels

**Laser light source life** — virtually maintenance-free 20,000-hour laser light source with no lamps<sup>3</sup>

**Pen-based interactivity** — turn almost any wall or existing whiteboard interactive; allows up to two users to write and draw at once

**Touch ready** — optional touch module available for touch-based interactivity with up to six points of touch

**Time-saving installation** — automatic image alignment

**Digital whiteboard** — draw, save, print and email without a PC; share whiteboard content to other network-connected BrightLink projectors<sup>4</sup>

**Built-in wireless** — use free Epson iProjection™ software to connect, display and share content simultaneously to/from up to 50 connected devices<sup>5</sup>

**BrightLink GoBoard™ Collaborative Whiteboarding Software** — 1-year free trial offer<sup>6</sup>



**Specifications**

**Native Resolution**<sup>1</sup> 1080p (1366 x 768 x 2)  
**Resolution On Screen** 1080p (2.1 million pixels)  
**Pixel Number** 1,049,000 pixels (1366 x 720); 3 chips  
**Display System** Epson<sup>®</sup> 3-chip 3LCD technology  
**Display Method** Ceiling/wall mount/table mount  
**Driving Method** Epson Poly-Silicon TFT Active Matrix  
**Color Brightness**<sup>2</sup> Color Light Output: 5,000 lumens  
**White Brightness**<sup>2</sup> White Light Output: 5,000 lumens  
**Aspect Ratio** Supports 4:3, 16:10, 16:9\*, 16:6\*, 21:9\*  
 \*With vertical image shift control within letterbox area  
**Size (Projected Distance) Area** (16:9) 65" – 100"  
**Keystone Correction (Manual)**  
 Horizontal: ± 3 degrees  
 Vertical: ± 3 degrees  
**USB Plug 'n Play** Mac<sup>®</sup> 10.4 or later; Windows<sup>®</sup> 7 or later  
**Contrast Ratio** Up to 2,500,000:1  
**Color Reproduction** Up to 1.07 billion colors  
**Illumination Technology** Laser Diode  
**Light Source Life**<sup>3</sup> 20,000 hours (Normal), 30,000 hours (Extended)

**Wireless Specifications**

**Supported Security Mode**  
 Access Point (WiFi Direct<sup>®</sup>): WPA2-PSK (AES)  
 Advanced Mode: OPEN, WPA2/WPA3 PSK  
 Supported EAP Type: PEAP, PEAP-TLS, EAP-TLS, EAP-Fast  
**Supported Speeds**  
 IEEE 802.11b: 11 Mbps\* (2.4 GHz)  
 IEEE 802.11g: 54 Mbps\* (2.4 GHz)  
 IEEE 802.11n: 72.2 Mbps\* (2.4 GHz)  
 IEEE 802.11a: 54 Mbps\* (5 GHz)  
 IEEE 802.11n: 150 Mbps\* (5 GHz)  
 IEEE 802.11ac: 325 Mbps\* (5 GHz)  
 \*Maximum speed and range are achievable when used with the same Enhanced Mode technology. Actual data rates, features and performance may vary depending on your computer system, the environment and other factors.

**Projection Lens**

**Type** Manual focus  
**F-Number** 1.50  
**Focal Length** 3.9 mm  
**Throw Ratio Range** (16:9) 0.27 – 0.37, (4:3) 0.37 – 0.50, (16:10) 0.30 – 0.42  
**Zoom Ratio** Digital zoom 1.0 – 1.35x

**Other**

**Speaker** 2x 8 W  
**Operating Temperature** 32° to 104 °F (0° to 40 °C)  
**Power Supply Voltage** 100 – 240 V ± 10%, 50/60 Hz  
**Auto Power On** Signal Detection on HDMI / Plug-in Detection (HDMI, USB, VGA 15-pin, BNC)  
**Sleep Mode** Yes (with timer)  
**Power Consumption**  
 ECO Mode: 270 W  
 Normal Mode: 381 W  
 Standby (Communication On): 2.0 W  
 Standby (Communication Off): 0.5 W  
**Fan Noise**  
 Quiet Mode: 27 dB, Normal Mode: 36 dB  
**Security** Kensington lock provision, security anchor bar, password-protect function

**Interfaces**

HDMI<sup>®</sup>: 3x (with CEC Control)  
 HDMI Out: 1x  
 Computer/Component Video: 2x D-sub 15 pin  
 Composite Video: 1x RCA (yellow)  
 Audio In: 3x Mini stereo  
 Audio Out: 1x Mini stereo  
 Microphone In: 1x  
 USB Connector: 2x Type-B (USB display, audio and mouse, k/b control interactivity)  
 USB Connector: 2x Type-A (USB memory/document camera)  
 RJ-45: 1x  
 Serial: 1x RS-232c  
 Monitor Out: 1x D-sub 15 pin (shared with computer 2)  
 Integrated Wireless LAN: 802.11 b/g/n/ac  
 Interactive Synchronization: Mini Stereo In  
 Interactive Synchronization: Mini Stereo Out  
 Touch Unit Connection Port: 1x



**Interactivity**

**Interactive Technology** Infrared, 850 nm  
**Interactive Area (Image Size)** 65" – 100" diagonal (16:9, 1080p)  
**Input Device** Digital pen or finger  
**Number of Pens** 2  
**Number of Pen Tips** 6 (4x felt/soft tip, 2x Teflon<sup>™</sup>/hard tip)  
**Pen Functions** Mouse functions (left and right click), electronic pen, LED battery status indicator  
**Pen Specifications** Size: 6.3" (L) x 0.95" (W); Weight: 1.1 oz (without battery)  
**Power AA** battery  
**Compatible Battery Types** 1x AA, Manganese dry cell, Alkaline dry cell, Panasonic eneloop<sup>™</sup> BK-3MCCX  
**Calibration Method** Automatic or Manual  
**Interactive Modes**  
 Whiteboard Mode: 2x pens and 6x fingers  
 PC-Free Annotation Mode: 2x pens and 6x fingers  
 Computer Interactivity Mode, Easy Interactive Tools: 2x pens and 6x fingers

**Requirements for Computer Interactivity**  
 Connection to the Computer: Via USB cable or wired/wireless LAN  
 Software System Compatibility: Epson Easy Interactive Driver for Mac only; Windows driver for Multi Projection; Windows (single projector) and Linux<sup>®</sup>: No driver required  
 Mac: Mac OS X<sup>®</sup> 10.7.x or later  
**Interactive Software Requirements** Epson Easy Interactive Driver (Mac and PC — required for DuoLink); Windows and Linux: driver not required; Mac: Mac OS X 10.7/10.8/10.9/10.10/10.11/macOS<sup>®</sup> 10.12.x Epson Easy Interactive Tools for Windows and Mac  
**System Compatibility** Microsoft<sup>®</sup> Windows 8/8.1, Windows 10, Windows 7 SP1 (all editions except for Starter), macOS 10.11/macOS 10.12.x, UBUNTU, 16.04 LTS, 19.04, 18.04 LTS  
**GoBoard Software Requirements**  
 Windows 10 version 1803 or later  
 CPU quad-core 2GHz  
 RAM DDR3 8 GB  
 Camera and microphone (for AV conferences, voice commands)

**Dimensions (W x D x H)**

**Measurements** 18.1" x 18.2" x 14.8"  
**Weight** 21.4 lb with cable cover (9.7 kg)

**Remote Control**

**Features** Source Search, HDMI, USB, Computer, LAN, Power, Aspect, Color Mode, Volume, E-Zoom, A/V Mute, Freeze, Menu, Home, Auto, Enter, Esc, Default  
**Operating Angle**  
 Rear: Right/Left: -55 to +55 degrees, Upper/Lower: +75 to +15 degrees; Front: Right/Left: -30 to +30 degrees, Upper/Lower: 0 to +60 degrees  
**Operating Distance** 19.7 ft (6 m)

**Eco Features**

Energy-efficient 3LCD light engine  
 RoHS compliant  
 Recyclable product<sup>9</sup>  
 Epson America, Inc. is a SmartWay<sup>®</sup> Transport Partner<sup>®</sup>

**Support**

**Service Programs** 3-year projector limited warranty, Epson Road Service program, dedicated toll-free support

**What's in the Box**

BrightLink 1480Fi, lens cover, rear cable cover, Quick Setup Guide, 6' power cable, 3x USB A/B cables, projector remote control with two AA batteries, pen holder, markers for auto screen adjustment, IR reflectors, 2x interactive pens, extra pen tips, battery charger and 2x AA rechargeable batteries (for interactive pens), warranty statement, 1-year license key for BrightLink GoBoard Software

**Ordering Information**

BrightLink 1480Fi	V11H921520
Ultra Short-Throw Wall Mount (ELPMB62)	V12HA06A05
Air Filter	V13H134A56
Finger Touch Module	V12H007A23
PowerLite <sup>®</sup> Pilot <sup>™</sup> 3 (ELPCB03)	V12H927020
Pixie Plus ELPSP10	ELPSP10
Document Camera DC-21	V12H758020
External Speakers (ELPSP02)	V12H467020
Wireless 802.11b/g/n LAN Unit (ELPAP11)	V12H005A02
100" Whiteboard 16:9 Aspect Ratio	V12H006A02
Interactive Pen A (orange)	V12H773010
Interactive Pen B (blue)	V12H774010
Replacement Pen Tips (hard/Teflon)	V12H775010
Replacement Pen Tips (soft/felt)	V12H776010
Touch Module Bracket	V12HA05A09

1 Pixel shifting technology achieves Full HD resolution on screen. | 2 Color brightness (color light output) and white brightness (white light output) will vary depending on usage conditions. Color light output measured in accordance with IDMS 15.4; white light output measured in accordance with ISO 21118. | 3 No required maintenance for the light source for up to 20,000 hours. Approximate time until brightness decreases 50% from first usage. Measured by acceleration test assuming use of 0.04 - 0.20 mg/m<sup>3</sup> of particulate matter. Time varies depending on usage conditions and environment. Replacement of parts other than the light source may be required in a shorter period. | 4 BrightLink 1485Fi and 1480Fi projectors only. Cannot share to earlier models. | 5 For wireless functionality, including via the Epson iProjection App, the projector must be configured on a network, either through the Ethernet port on the projector (check model specifications for availability) or via a wireless connection. Check your owner's manual to determine if a wireless LAN module must be purchased separately to enable a wireless connection. Not all Epson projectors are able to be networked. The Epson iProjection App does not support all files and formats. See www.epson.com for details. | 6 GoBoard Collaborative Whiteboarding Software requires a Windows 10-based PC. Not included. | 7 Wi-Fi CERTIFIED<sup>™</sup>; level of performance subject to the range of the router being used. | 8 For convenient and reasonable recycling options, visit www.epson.com/recycle | 9 SmartWay is an innovative partnership of the U.S. Environmental Protection Agency that reduces greenhouse gases and other air pollutants and improves fuel efficiency.

Learn more about how our products can empower your institution. Visit us at [www.epson.com/foreducation](http://www.epson.com/foreducation)

Better Products for a Better Future<sup>™</sup>  
[eco.epson.com](http://eco.epson.com)



Epson America, Inc.  
 3131 Katella Ave., Los Alamitos, CA 90720

Epson Canada Limited  
 185 Renfrew Drive, Markham, Ontario L3R 6G3

[www.epson.com](http://www.epson.com)  
[www.epson.ca](http://www.epson.ca)

Specifications and terms are subject to change without notice. EPSON and PowerLite are registered trademarks, EPSON Exceed Your Vision is a registered logomark and Epson iProjection and Better Products for a Better Future are trademarks of Seiko Epson Corporation. BrightLink and PrivateLine are registered trademarks and GoBoard and Pilot are trademarks of Epson America, Inc. Mac, macOS and OS X are trademarks of Apple Inc., registered in the U.S. and other countries. Microsoft and Windows are either registered trademarks or trademarks of Microsoft Corporation in the United States and other countries. Wi-Fi Direct<sup>®</sup> is a registered trademark of Wi-Fi Alliance<sup>®</sup>. SmartWay is a registered trademark of the U.S. Environmental Protection Agency. All other product and brand names are trademarks and/or registered trademarks of their respective companies. Epson disclaims any and all rights in these marks. Copyright 2022 Epson America, Inc. Com-SS-Oct-13 CPD-58163R3 10/22