

Professional
Imaging

Introducing The New

SureColor P-series and SureColor T-Series

Production Class Lines

P-Series: Production Photo & Graphic Art

T-Series: Engineering | Scientific | Graphics & Posters



20+ Years- A Chance to Reflect

Professional
Imaging



Started with a blank sheet of paper to create a design for a product class that is 20 years in the making

SureColor P-Series: Production Class

Professional
Imaging

NEW



Consumer Photo / Poster 24" – 44"

- Consumer "Everyday" Photo
- Photo Lab, Print Service Provider
- High Volume Photo Production

6 Color with Gray



Production Fine Art 24" – 44"

- Color Critical Photo & Fine Art
- Professional Photography
- Proofing

12 Color with K3



Production Photo / Fine Art 64"

- Color Critical Photo / BW
- Large Format Production
- Fine Art Production

10 Color with K4

SureColor T-Series: Production Class

Professional
Imaging

NEW



Entry Level CAD

- Desktop / Home / Small Office
- Quick Access to D-sized Plots
- Simple Setup and Easy to Use

SOHO



Mid-Range CAD Printing

- Workgroup Technical Plotting
- Fastest Printer for D-sized Plots
- Print Indoor Matte Borderless Posters

Small-Mid Office



Production CAD & Graphics

- Fast Throughput / Low TCO
- Versatile Media Options and Dual Roll
- Adobe Embedded Print Engine

Enterprise – Prod Graphics

T-Series: Key Customer Applications

Professional
Imaging



Architects / Engineers and Construction

Drawings and renderings at fast
speeds with accuracy and detail



Reprographics

Print for pay - high-speed
output with sellable quality



Point of Purchase

Signs, Renderings, Graphics
and Retail/Hospitality POP



Edu / Corp Graphics

Print posters, signage, process
maps, large spread sheets

Most versatile wide format printer in Epson line

P-Series: Key Customer Applications

Professional
Imaging



Volume Photo Fulfillment

Fleet “Multi Unit” Operations
National Fulfillment – Photo / Poster
B2B / B2C Photo / Poster



Production Poster

Décor Art / Specialty
Limited Run Large Format
Rigid Posterboard



Photo Lab / Retail

“Every Day” Photography
Specialized Photo Print Products
Canvas and Enlargements



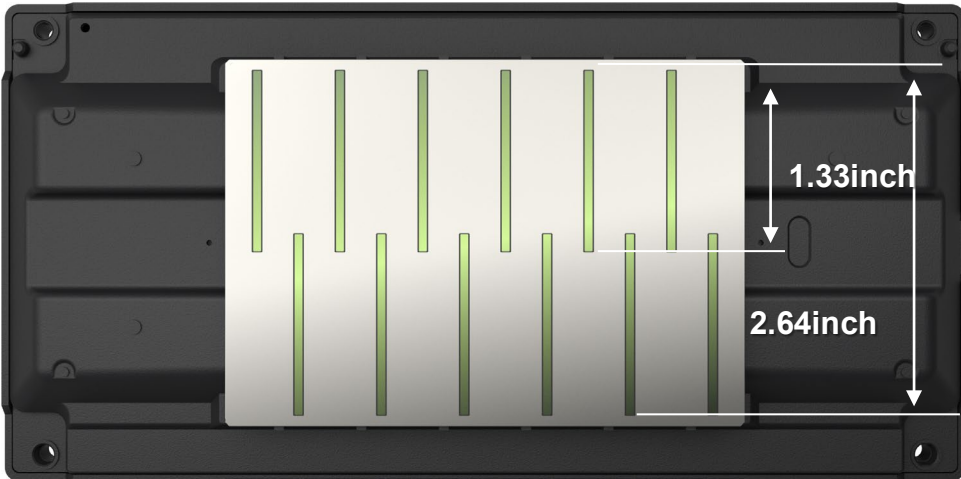
Service Providers

Photo and Graphic Art Prints / Posters
Point of Purchase Graphics
Indoor Graphics

High Speed for production photo environments

PrecisionCore Printhead Technology

Professional
Imaging



PrecisionCore 2.6" MicroTFP printhead
is 2x size of previous generation printhead

Extreme Print Quality, Precision, and Speed

- Capable of high-resolution printing - up to 2400 dpi¹
- Precision ink drop control for outstanding clarity and sharpness
- Extreme accuracy - variable size droplets as small as 3.5 picoliters

Commercial Grade Reliability

- Heat Free and Designed to last the life of the printer – print head is not a consumable
- Nozzle Verification Technology (NVT) – automatically detects nozzle condition and instigates cleaning procedure
- Ink repelling coating reduces the chance of a nozzle clog

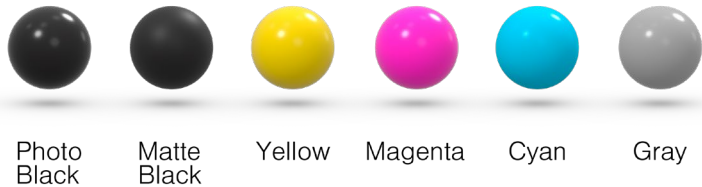
Precise, accurate, and consistent - engineered to last the life of the printer

P-Series: UltraChrome PRO6 Ink Technology

Professional
Imaging



ULTRACHROME
PRO6 INK

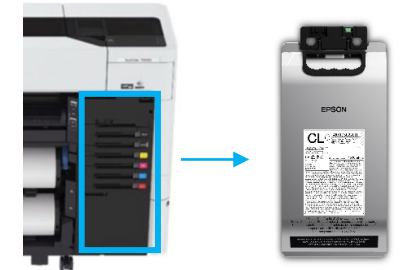


Epson UltraChrome® PRO6 Ink

- Aqueous based pigment
- 6-color inkset with **GRAY**
for smooth gradations and less graininess
- 110, 350, or 700 mL cartridges

1.6L Ink Pack (L Printer Models)

- Cost effective for production
- Less environmental waste
- Large capacity for efficiency



Rich colors and smooth gradations with less graininess

T-Series: Epson UltraChrome XD3 Ink Technology

Professional
Imaging



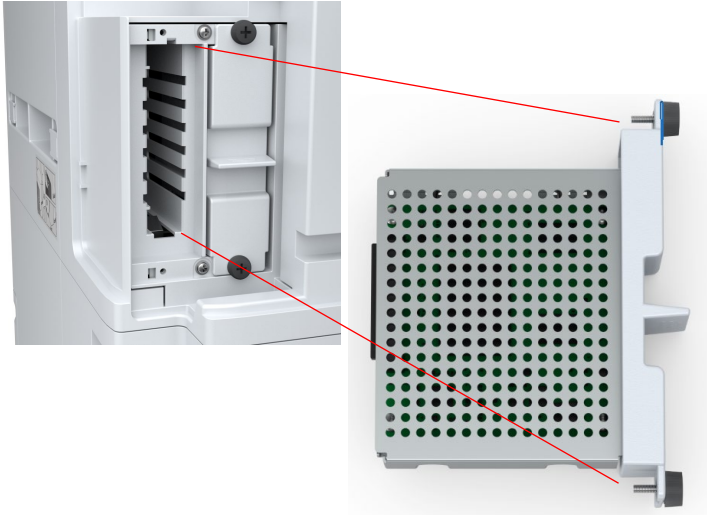
ULTRACHROME
XD3 INK

Latest Generation All-Pigment Inks Purpose-Built

- 6-color ink set with new RED ink for rich branding and POP colors
- Durable ink - Water, smudge, and fade resistant
- 110, 350, or 700 mL cartridges
- 1.6 L Ink bag printer version available (T7770DL)

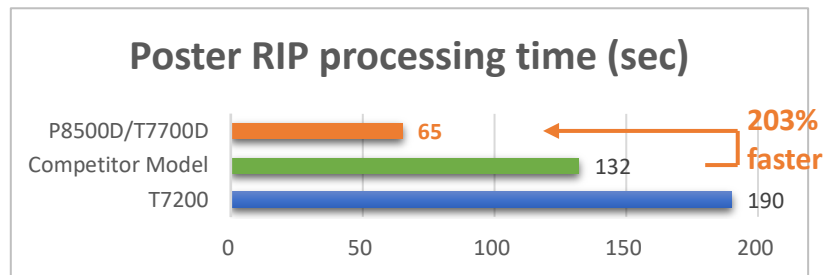


Rich colors and durable lines that resist water, smudges and fading



Impressive processing time and convenience for printing PDFs

- Up to 3x faster processing of complicated data than previous generation
- Print PDF files from USB flash drive, phones and tablets – No PC required
- Extreme processing power with four Intel CPUs on board and ACE
- Live transparency blending and smoother shades
- Print PDFs from phones, tablets, and USB drives



Previous workflow (without PDF)

4 steps



1 step!

New workflow (with PDF)



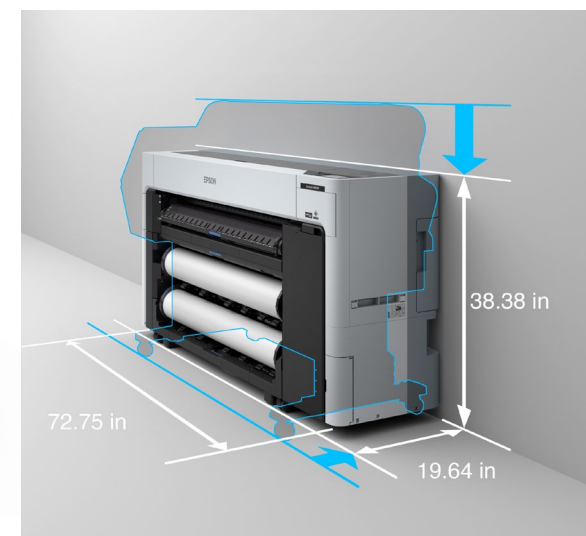
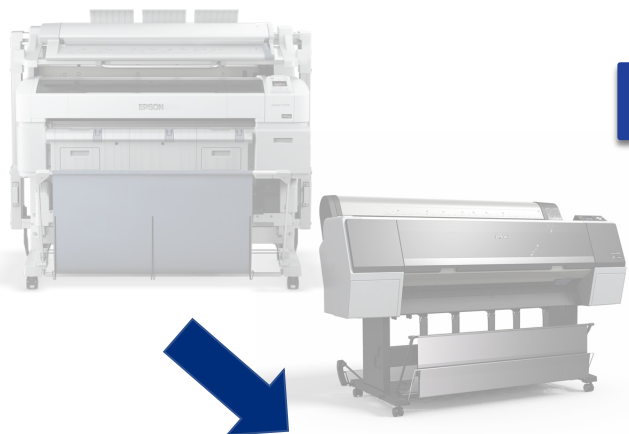
Easy, one-step workflow minimizes processing and enhances print accuracy

A New Innovative Approach to Printer Design

Professional
Imaging

Production class printing that's more compact than ever before

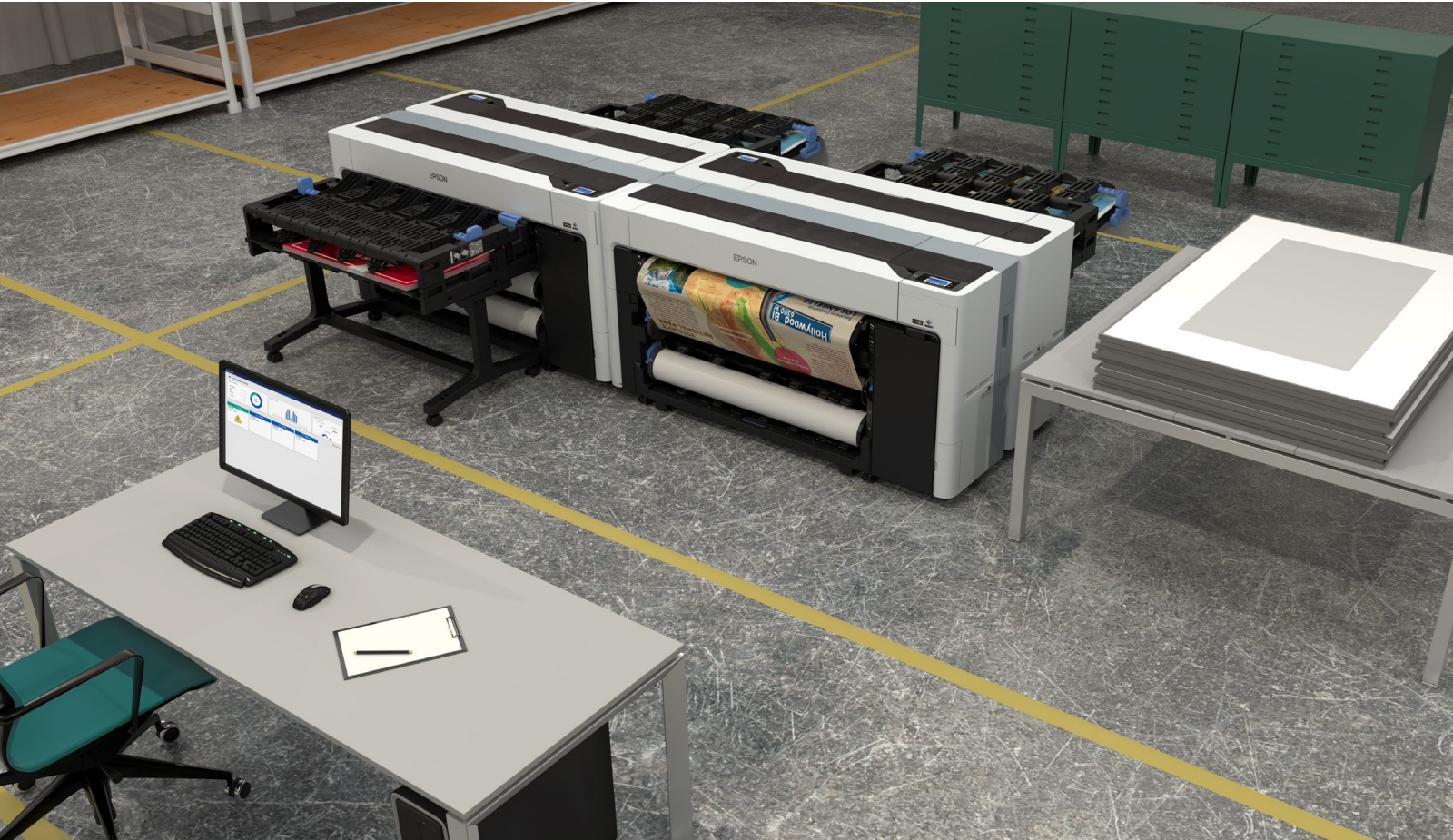
- Compact and functional one-piece design with no assembly needed
- Unpacked, set up, and printing in less than 30 minutes
- Complete front operation and flat back – can be pushed up against a wall



Compact and powerful printing in front, back office

Compact Design and Full Front Operation

Professional
Imaging

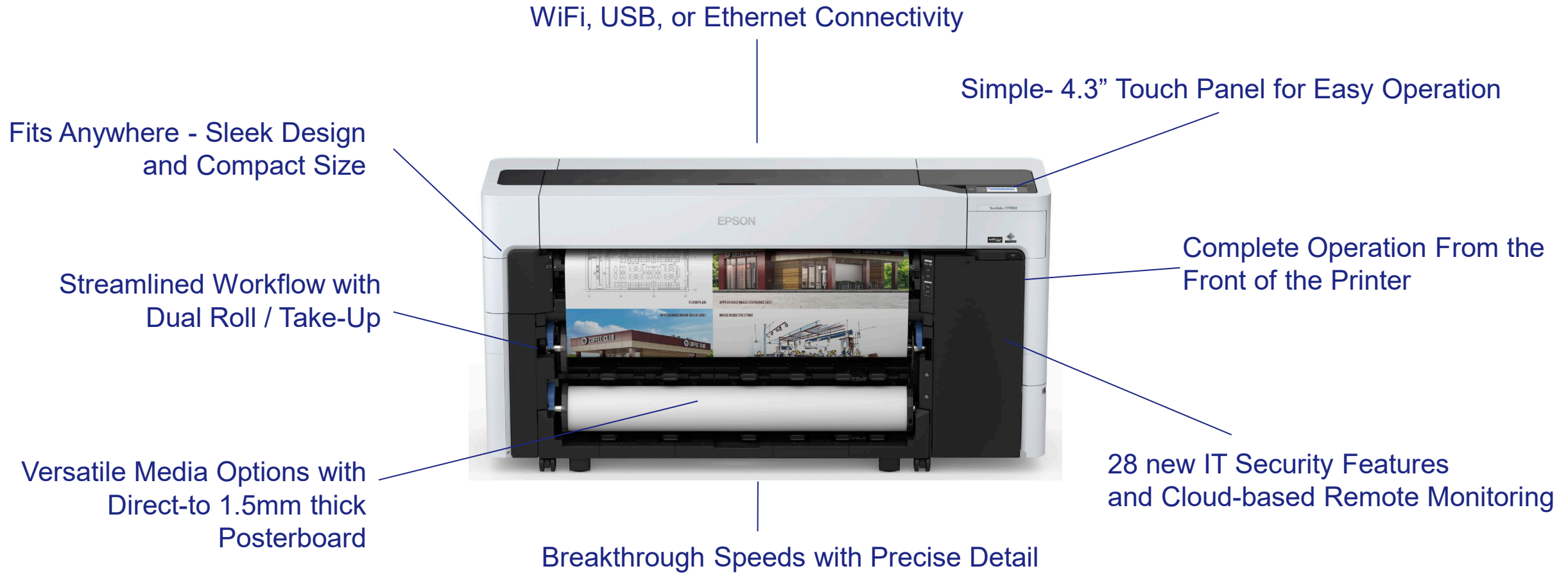


Thin, Flat Back Design

- Ergonomic slim profile
- Place printer against wall or each other
- Depth is only 19.6 in.
- **SureColor P8570D:** up to 25% smaller than competitor models³
- **SureColor T7770D:** up to 25% smaller than competitor models⁴

Quick Product Overview

Professional
Imaging



Significant new innovations based on customer feedback

Printer Version Options: T-Series

Professional
Imaging

Available Models

24" Wide Class



- **SC-T3770E** Single Roll
- **SC-T3770D** Dual Roll
- **SC-T3770DE** Dual Roll

36" Wide Class



- **SC-T5770D** Dual Roll

44" Wide Class



- **SC-T7770D** Dual Roll
- **SC-T7770DL** Dual Roll
w/Ink Pack System

Six new models from 24" to 44" to meet a variety of customer needs

Printer Version Options: P-Series

Professional
Imaging

Available Models



24" Class

- **P6570** Single Roll
- **P6570D** Dual Roll
- **P6570DE** Dual Roll



44" Class

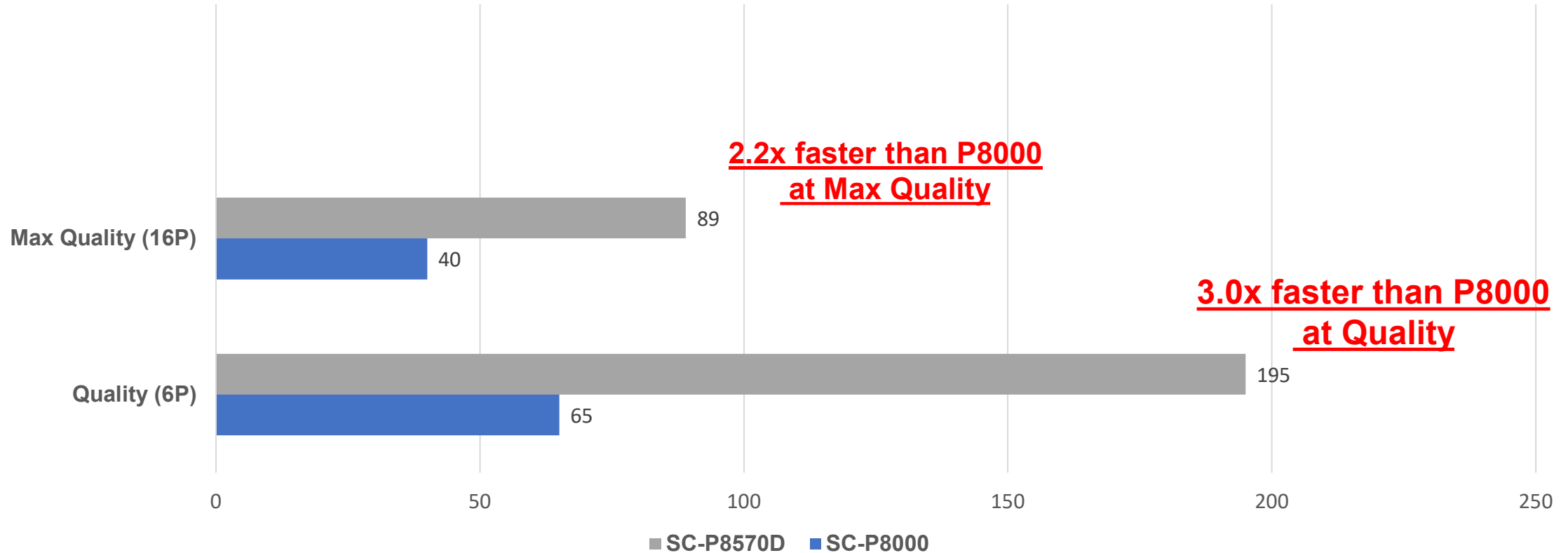
- **P8570D** Dual Roll
- **P8570DL** Dual Roll
with 1.6L Ink Pack System

Four new models to meet a variety of customer needs

P8570D vs P8000 Print Speeds

Professional
Imaging

Productivity Throughput sq ft/hr

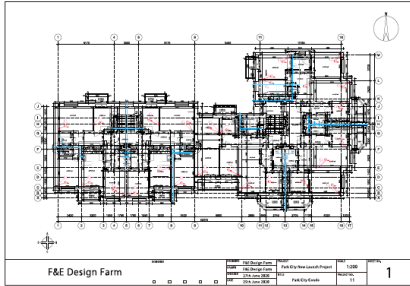


Specification to change without notice

*Values calculated based on B0+ Media, print data: bike image. Photo Paper. Time: from first pass to end of last pass (not including cutting).

T-Series: Breakthrough Production Print Speeds

Professional
Imaging



Breakthrough production-class speeds over 1400 sqft /hr¹

- Up to 3.7 A1/D Size prints per minute
- Up to 2.2 times faster than previous generation

Deliver Poster/POP Speeds over 300 sqft / hr¹

- Up to 2.5x faster than previous generation

CAD Drawing		Graphics / POP	
Mode	A1 / D-size (Seconds)	Mode	39" x 55" Posters
Draft	16	Speed	Up to 18 per hour
Speed	23	Quality	11 per hour

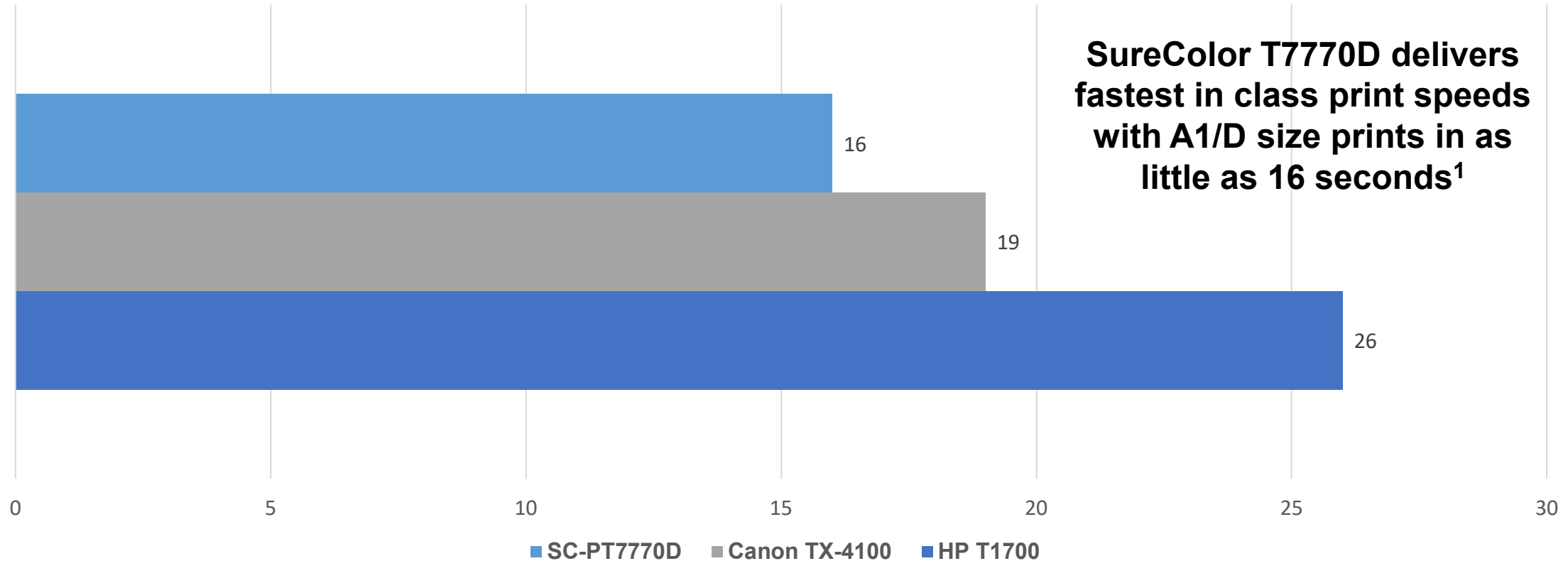
SureColor T7770D 44"-wide printer delivers fastest in class print speeds.²

SureColor T7770D vs Competitor Print Speeds

Professional
Imaging

A1 / D-Size Print Speed (Seconds)

**SureColor T7770D delivers
fastest in class print speeds
with A1/D size prints in as
little as 16 seconds¹**



Compared to similarly featured CAD/Technical printers, A1/D sized prints, in fastest printing mode, priced at \$10,000 MSRP (USD) or less based on manufactures' published specifications and industry available as of May 2021. Actual print times with vary. Print speeds are based on the print engine speed only. Total throughput time for any print depends on various factors including workstation configuration, file size, print resolution, ink coverage and networking.

State of the Art Media Handling

Professional
Imaging



Fully Automatic Roll-Media Loading

- Rolls load automatically – **no feeding paper necessary**
- Automatically switch between rolls
- Roll Selection based on driver & job settings

Print Direct to Rigid Matte Posterboard

- No finishing required- Reduced labor cost for rigid signs
- Instantly Dry, ready for use and Durable
- Print up to 1.5mm thick (Thick media, coated aluminum, etc)

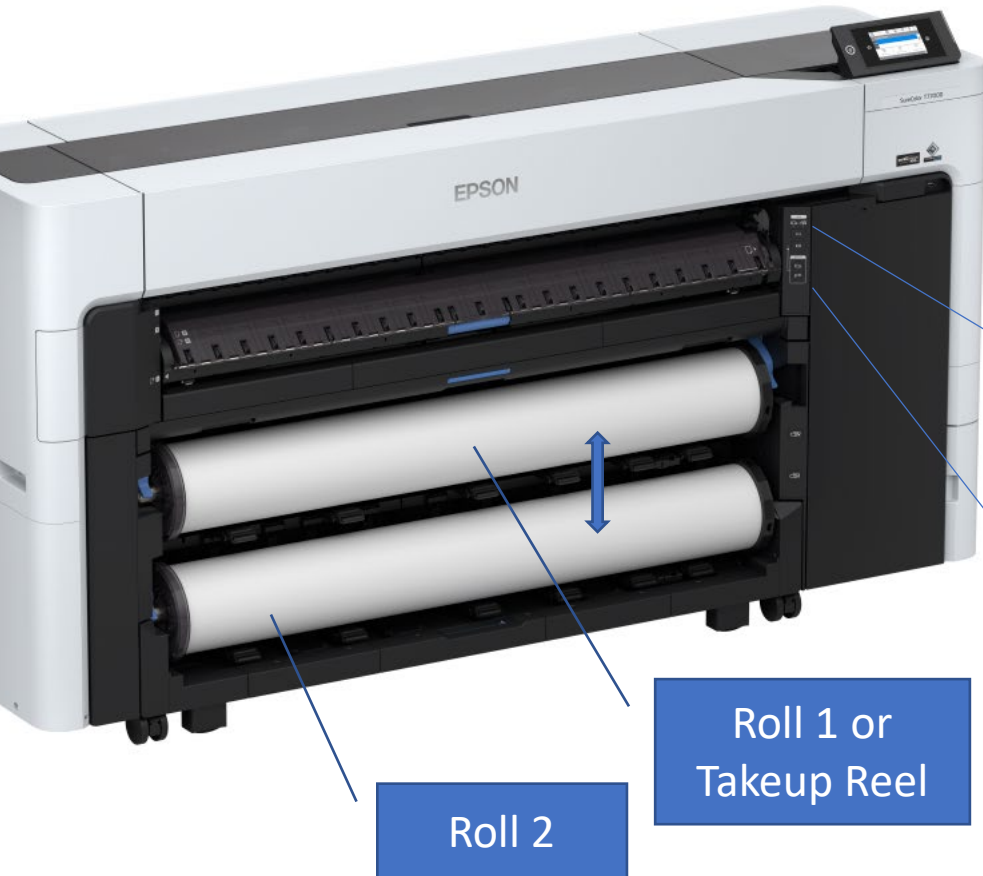
BorderFree Printing Capability

- Built in cutter trims top and bottom for 4 sided Borderfree prints
- Print edge to edge no trimming needed
- Eliminates finishing time needed to trim

Convenient media handling options to help reduce finishing time

Innovative Dual Roll / Integrated Take-up Reel

Professional
Imaging



Dual Input Rolls with Fast Automatic Switching

- Load two paper types or sizes simultaneously
- Load the same size/ type for double the input capacity
- Automatically switch between rolls as needed for each job based on driver/ job settings



Included Take-up Reel Mode

- Roll 1 can be used as a take-up
- High productivity roll-to-roll printing
- Roll print side in or print side out
- Adjustable winding tension (L / M / H)

Less intervention and no additional accessory needed for take-up

Works with a Wide Variety of Media

Professional
Imaging



P-Series: Fine Art / Photo Media and Canvas

- Epson Professional & Signature Worthy
- Epson Legacy

T-Series: CAD, Technical, Specialty Media:

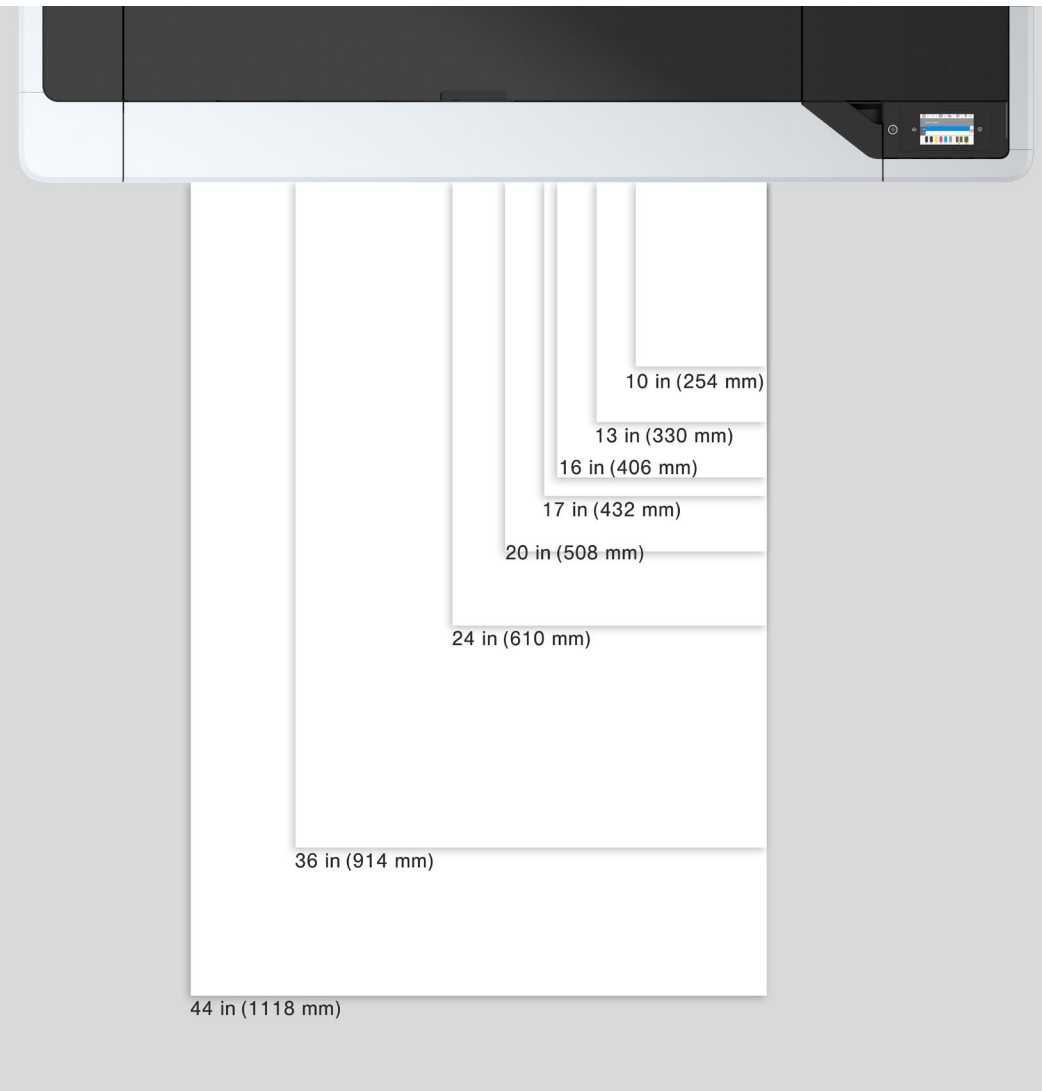
- Standard Plain Paper / Bond
- Presentation, Singleweight, Doubleweight Matte Media
- Mylar and Vellum/ Tracing Paper
- Poster Paper, Luster, and Matte Photo Media
- Matte, Satin, and Glossy Canvas

Prints directly to 1.5mm thick Rigid Matte Posterboard

Versatile media handling for a wide variety of jobs and projects

Advanced Media Handling Capabilities

Professional
Imaging



Roll Media

- Roll Media ID and Length Tracking
- BorderFree® Printing (10", 13", 16", 17", **New** 20", 24", 36", 44")
- Built-in Automatic Rotary Cutter (Replaceable)
- 6.7" Roll Max Diameter. 10" Wide Minimum width
- 2" & 3" Cores

Retractable Print Basket

Professional
Imaging

- Closes into printer when not in use
- Allows printer to have a slim profile
- Works with a variety of finished media



Conveniently catch wide printouts when needed / stow when not in use

Expandable Options: Production Stacker

Professional
Imaging



Optional Production Sheet Stacker

- Available in 24", 36" and 44" Versions
- Adjustable for multiple print lengths
- Continuous unattended printing for up to:
 - 2 rolls or stacks up to 2.3" thick (whichever comes first)
 - or 72 sheets of Glossy Poster Paper 250
- Supports sizes 8-1/2 x 11" up to 33.1" x 46.8"
- Casters built in - can be detached and stored when not in use
- Folds up to reduce space

Estimated starting MSRP - \$749 (24" wide stacker)

Convenient media handling options to help reduce finishing time

Expandable Options: 960 Self-Encrypting SSD

Professional
Imaging



Solid State Memory Drive (960 GB)

- Enables a print job to immediately transfer from the computer
- Frees up bandwidth on your network and computer
- Allows a computer to be turned off while printing
- Stores jobs later for easy reprinting
- EAS-256 Encryption
- SSD data cannot be read from another computer or printer (key is protected by TPM security chip)

SSD storage space breakdown



Largest capacity in its class⁵. Secure and convenient storage for job reprinting and transfers

IT Security Features

Professional
Imaging



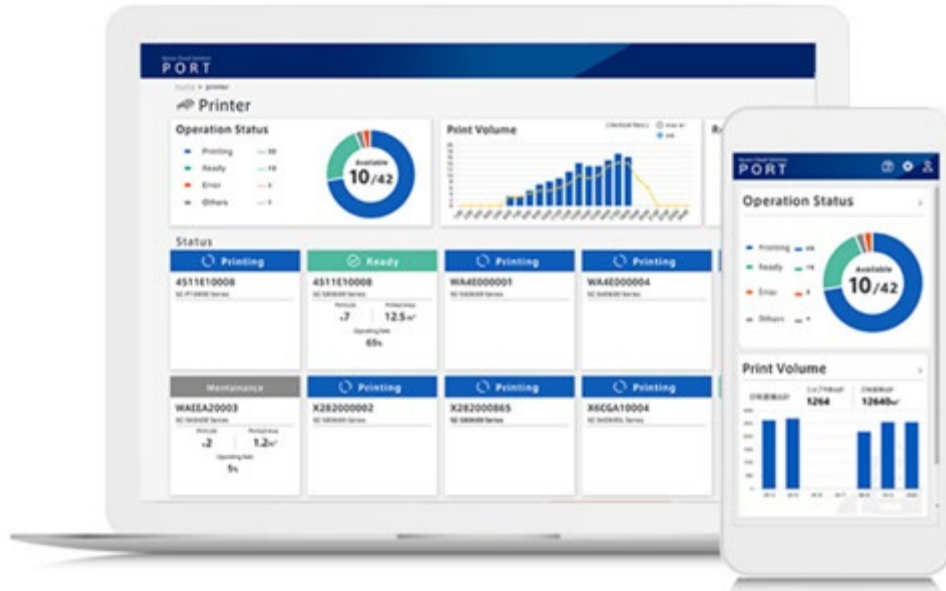
Supports many popular security requirements

- Over 28 security features, including security standards, data protection, secure communication, and access control
- Encrypted SSD cannot be read from other devices
- Allows setup of multiple password protected data folders
- Easy device management and tracking with Epson management software

Robust features to adapt printer to many secure IT environments

Cloud Based Fleet Management

Professional
Imaging



Epson Cloud Solution PORT

Monitor and Optimize with Epson Cloud Solution PORT

- Online dashboard provides updates on printer fleet status, errors and consumables levels from virtually anywhere
- Track usage data, individual printer information, and page/square foot counters
- Create reports on usage and optimize fleet for maximum productivity
- No subscription or monthly fee

Monitor and optimize printer fleet cost-effectively

Flexible Workflow and Office Management

Professional
Imaging



Permissions management with Epson Print Admin

- Low cost management solution
- Manage with PIN access or optional NFC card readers
- Easy setup through LDAP service for authentication printing
- Central management and print history tracking

Epson Open Platform and 3rd Party Software Support

- Works with several popular RIP and fleet management providers:



Easy to integrate into existing fleet environments and workflows

Convenient and Easy Operation

Professional
Imaging



User-friendly Operation Features

- Customizable 4.3” articulating touch panel
- Web browser accessible IT security and user settings

Simplified Maintenance

- Nozzle verification technology and scheduled head cleaning intervals
- User accessible print head maintenance covers

High Speed File Transfer and Mobile Connectivity

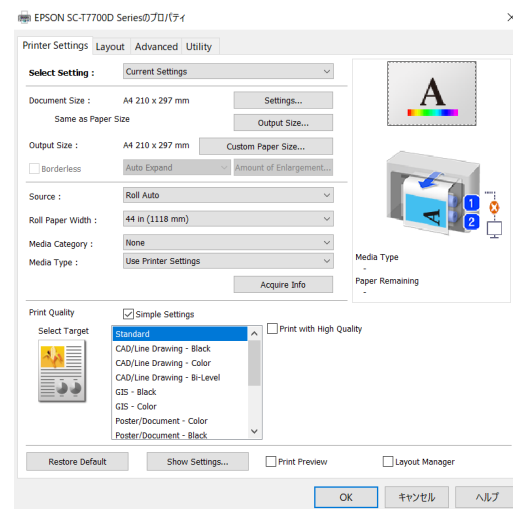
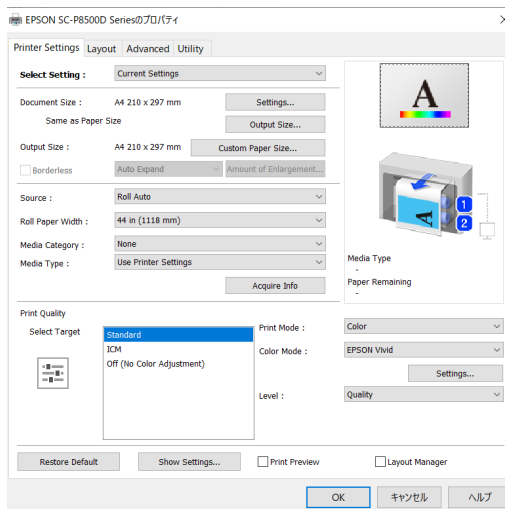
- 2.4 GHz and 5 GHz Wireless
- Connect directly to Tablets, iPads, and Smart Phones via Wifi Direct
- High-Speed Gigabit Ethernet for large file transfers

Print Files Directly From USB Thumb Drives

Self-user maintenance and ease of operation for a variety of users

Device Management Software

Professional
Imaging



Fleet Management

- Epson Device Admin
- Epson Print Admin
- EpsonNet Config and Setup Manager

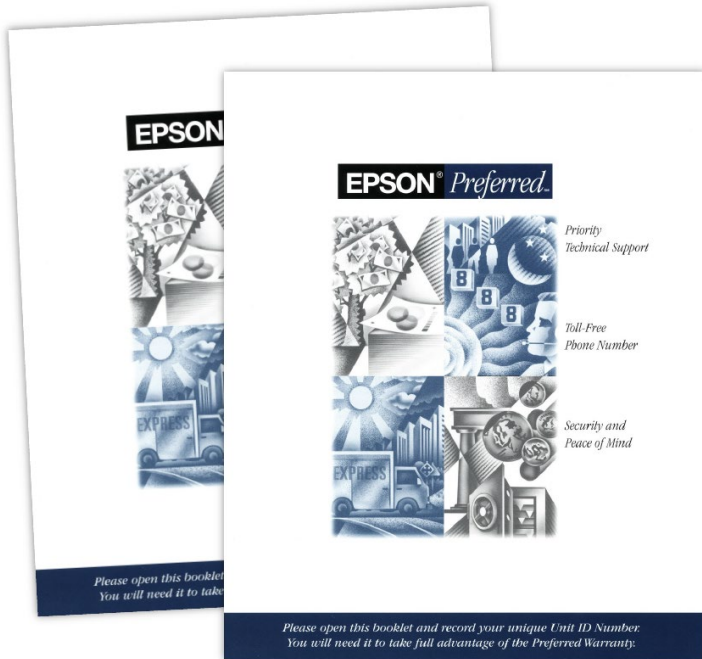
Printer Management

- Epson Cloud Solution PORT
- Epson Edge Dashboard
- Epson Media Installer
- LFP Accounting Tool

Printer Settings

- Software and Firmware Updaters
- EpsonNet Print and Setup
- Windows and Mac Print Drivers

Easy to integrate into existing fleet environments and workflows



Standard 1-Year Epson PreferredSM Limited Warranty

- On-site, usually next business day service
- Included technical support by phone Monday thru Friday
- Covers the printer and genuine Epson optional accessories

Optional Epson Preferred Plus Premium Service and Support Plans Up to 5 Years*

- Extended service plan coverage when the standard limited in-box warranty ends
- Can be purchased at any time while still under an Epson Preferred Limited Warranty, or while covered under an Extended Service Plan
- Provides up to 5-years of complete coverage from Epson*

* Limitations apply. Availability of coverage length availability depends on model. See www.Epson.com/support for details.

Key Feature Summary

Professional
Imaging



Breakthrough Production-Class Speeds

New UltraChrome 6-ink set with Gray (P) or Red (T)

– Matte and Photo black / no switching on P-Series

New space-saving, compact one-piece design

Advanced media handling

–Dual Roll, Automatic Roll Switching, Built-in take-up reel

Adobe Embedded Print Engine

Easy Operation and Simplified Maintenance

Over 28 IT Security Features

Epson Cloud Solution PORT / 3rd Party Software

Key Launch Dates

Professional
Imaging



	SureColor P8570D 44" Wide Production Photo Printer	SureColor T7770D 44" Wide CAD/Graphics Printer
MSRP	\$6445	\$6945
Shipping Date	Q4 2021	Q4 2021

24", 36", and L model MSRP / Detail will be available July 2021



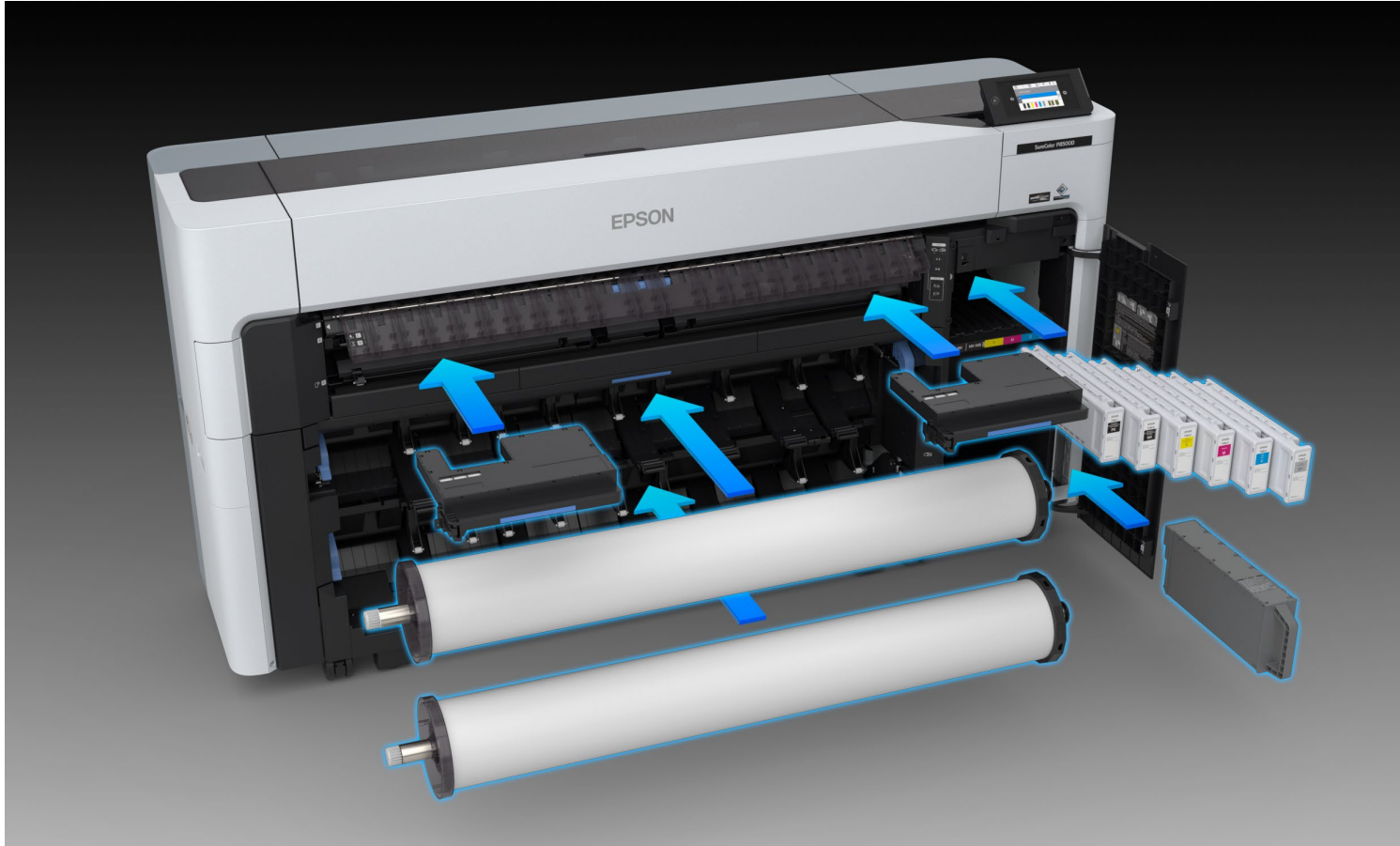
Thank you



Appendix

Consumables and Accessories

Professional
Imaging



- Consumables
 - Inks
 - Borderless Maintenance Tanks
 - Maintenance Tank
 - Rotary Cutter Assembly
 - Cleaning Swabs
- Accessories
 - Print Stacker
 - 960 GB SSD
 - Adobe Embedded Print Engine
 - Standard in P8570D, T7770D
 - Additional Spindle

SureColor P8570D Product Codes

Professional
Imaging

Model Name	SSD Unit	Production Stacker (44")	Roll Feed Spindle (44")
SC-P8570D	C12C936671	C12C937131	C12C936171

Replacement Cutter Blade	Maintenance Box	Borderless Maintenance Box	Cleaning Stick
C13S210117	C13S210115	C13S210116	C13S090013

Ink Size (ml)	Color	Product Code
700	PK	T48L120
	C	T48L220
	M	T48L320
	Y	T48L420
	MK	T48L820
	GY	T48LE20
350	PK	T48S120
	C	T48S220
	M	T48S320
	Y	T48S420
	MK	T48S820
	GY	T48SE20
110	PK	T49A120
	C	T49A220
	M	T49A320
	Y	T49A420
	MK	T49A820
	GY	T49AE20



SureColor T7770D Product Codes

Professional
Imaging

Model Name	SSD Unit	Production Stacker (44")	Roll Feed Spindle (44")
SC-T7770D	C12C936671	C12C937131	C12C936171

Replacement Cutter Blade	Maintenance Box	Borderless Maintenance Box	Cleaning Stick
C13S210117	C13S210115	C13S210116	C13S090013

Ink Size (ml)	Color	Product Code
700	PK	T50L120
	C	T50L220
	M	T50L320
	Y	T50L420
	MK	T50L820
	GY	T50LF20
350	PK	T50S120
	C	T50S220
	M	T50S320
	Y	T50S420
	MK	T50S820
	GY	T50SF20
110	PK	T51A120
	C	T51A220
	M	T51A320
	Y	T51A420
	MK	T51A820
	GY	T51AF20



IT Security Features

Professional
Imaging

Category		P8500D T7700D	Description
Security Standard	ISO 15408		*WF-C21000/LX-10050 series support and this is the only difference
	FIPS 140		
	Firmware update Enable/Disable option		Setting to allow firmware update
	TPM (Trusted Platform Module)	Y	
	BIOS security validation (when power on)	Y	When power on, printer checks BIOS falsification
	Secured BIOS	Y	Use secured BIOS when program falsification is detected
	Firmware/Software code validation (when power on)	Y	When power on, printer checks firmware/software falsification
	Run-time memory validation (during power on/working)		Printer checks all codes during power on/working to avoid a malicious program falsification.
	Re-start / Self-recovery		When printer detects malicious program falsification, printer re-start automatically to recover.
	Security Event Log	Y	Logged security events (only administrator can access)
	SIEM (Security Information and Event Management)		Central management of security log for devices and servers using Syslog.
	Firmware Digital Signature	Y	During firmware update, printer verifies the firmware using a digital signature
Data Protection	Protect system files and directories	Y	
	Encrypted SSD	Y	Saved data in SSD is secured using encrypted SSD.
	Secure file deletion		Secure file deletion in HDD after Scan to Folder etc.
	Secure storage deletion	Y	The device completely erases all data in it at the delete operation by user.
	Encrypted email (=S/MIME email)		The email generated by "Scan to Email" is encrypted.
	SMTP server	Y	Encrypted communication channel for email by SMTP

IT Security Features Continued

Professional
Imaging

Category		P8500D T7700D	Description
Secure Communication	Network anomaly behavior detection		Printer is monitoring anomalous communication at the packet level.
	"802.1x network authentication (IEEE 802.1x)"	Y	Authentication when device is connected
	SNMPv3	Y	Encrypted device communication (use for printer status, ink level etc.) by SNMPv3
	TLS 1.1/1.2	Y	Encrypted device communication (use for printer settings) by TLS 1.1/1.2
	IPP printing	Y	Encrypted communication channel by supporting IPP standard
	IPSec	Y	Encrypted communication channel by supporting IPsec standard
	Encrypted print job/data		IPP is one of idea if customer using LAN connection.
	CA certificate	Y	CA certification for secure features for SSL/TLS, IPsec, 802.1x. etc.
	Device identity certificate	Y	Device identity certification for secure features for SSL/TLS, IPsec, 802.1x. etc.
	Enable/Disable Network port	Y	
	Enable/Disable USB port	Y	
Device Access Control	Single PIN/Password	Y	Device unlocked by PIN/Password (=simple device lock/unlock)
	Multiple PINs/Passwords	Y	Device unlocked by PIN/Password and menu access level is able to configure by PIN/Password
	Access Control by administrator password	Y	Only administrator is able to access to specific menu.
	Encrypted PINS/Passwords	Y	
	ACL (Access Control Lists)	Y	Only registered user can use device(s)
	Active Directory	Y	User information is managed using Active Directory
	LDAP	Y	User information is managed using LDAP
	Wi-Fi Direct	Y	Able to print using Wi-Fi Direct.
	NFC support		NFC(Near Field Communication) to communicate with mobile.
	iBeacon (Bluetooth Low Energy)	Y	

Specifications are Subject to Change Without Notice

1. Print speeds are based on the print engine speed only. Total throughput time for any print depends on workstation configuration, file size, print resolution, ink coverage, networking, etc. Actual print speeds will vary.
2. Compared to similarly featured CAD/Technical printers, A1/D sized prints, in fastest printing mode, priced at \$10,000 MSRP (USD) or less based on manufactures' published specifications and industry available as of May 2021. Actual print times with vary. Print speeds are based on the print engine speed only. Total throughput time for any print depends on various factors including workstation configuration, file size, print resolution, ink coverage and networking.
3. Compared to similarly featured Aqueous Photo printers priced at \$10,000 MSRP (USD) or less based on manufacturers' published specifications and industry data available as of May 2021.
4. Compared to similarly featured Aqueous CAD/Technical printers priced at \$10,000 MSRP (USD) or less based on manufacturers' published specifications and industry data available as of May 2021.

Epson, MicroPiezo, PrecisionCore, PrecisionDot, UltraChrome, SureColor and are trademarks or registered trademarks, Epson Preferred is a service mark, and EPSON Exceed Your Vision is a registered logo mark of Seiko Epson Corp.

All other product brand names are trademarks and/or registered trademarks of their respective companies.
Epson disclaims any and all rights to these trademarks.

© Epson America, Inc. 2021 JH MA June 2021/ v1.1