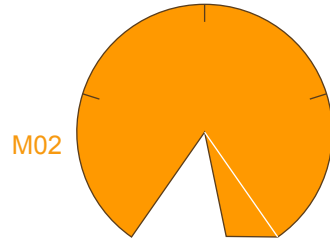
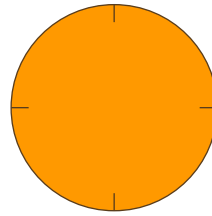


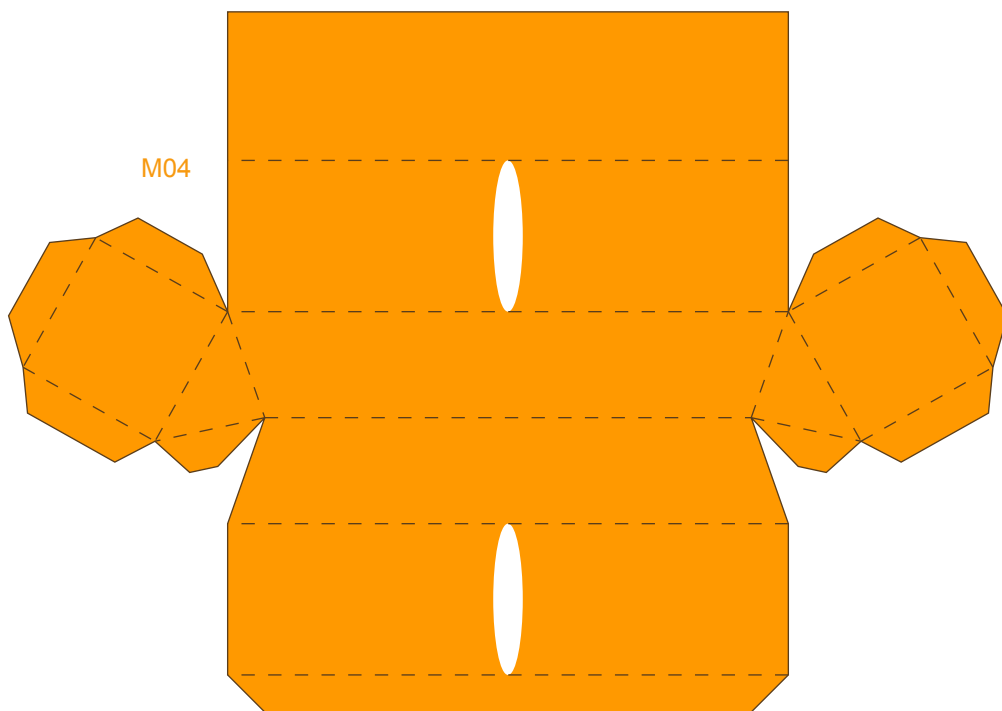
M01



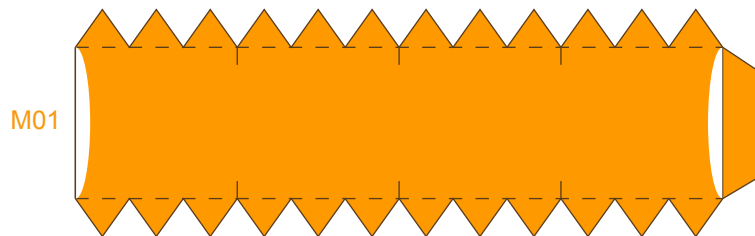
M02



M03



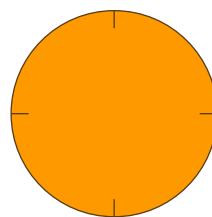
M04



M01

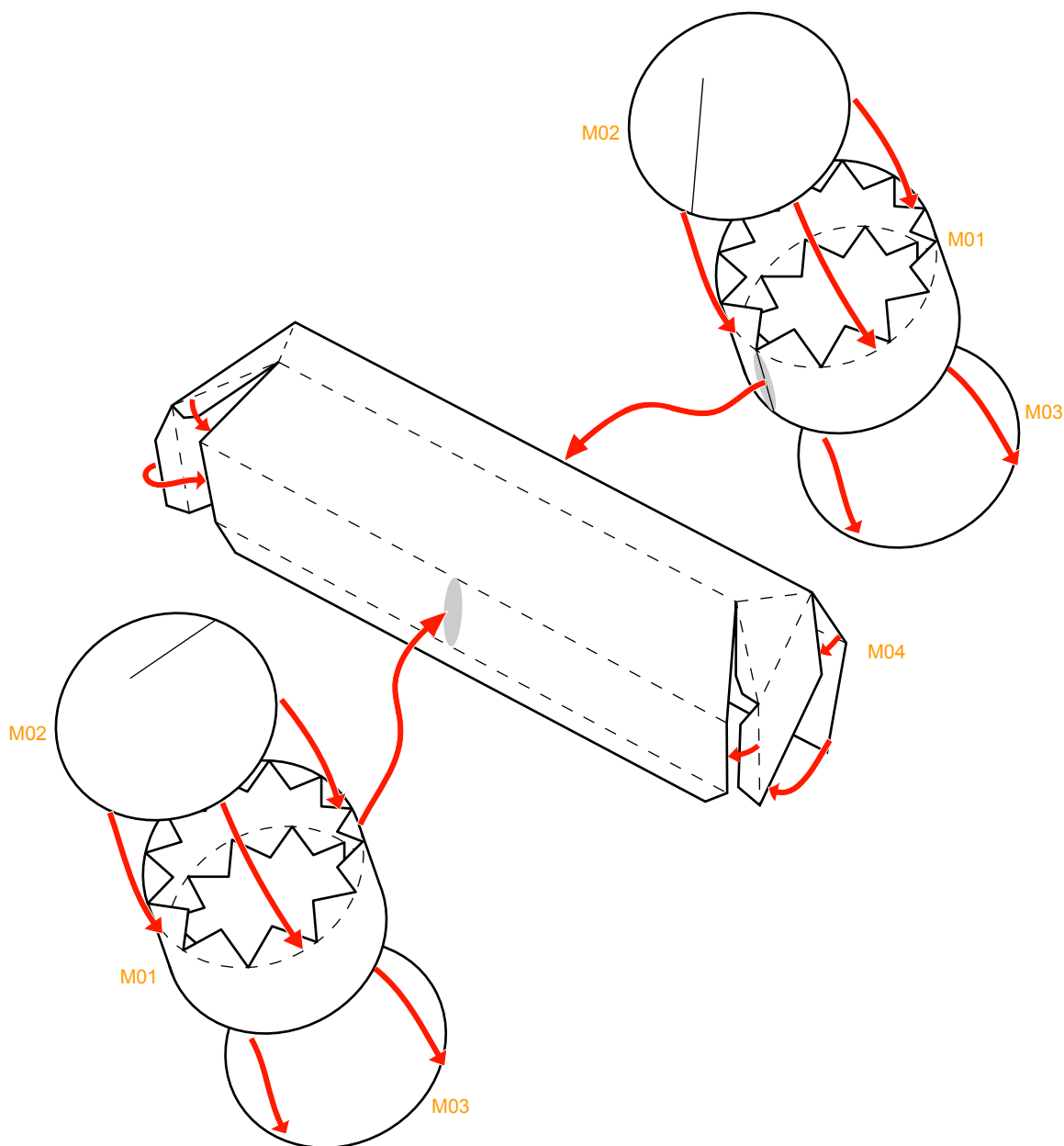
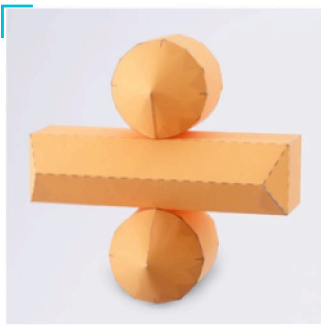
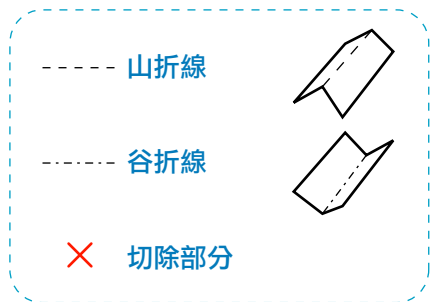


M02



M03

組合說明



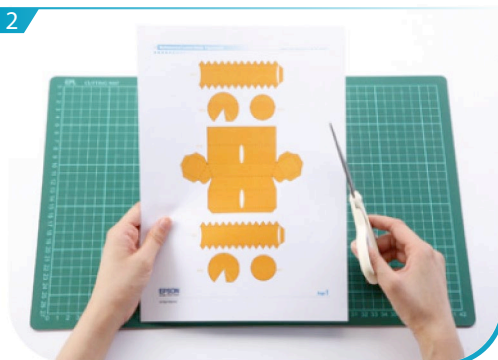
製作步驟

1



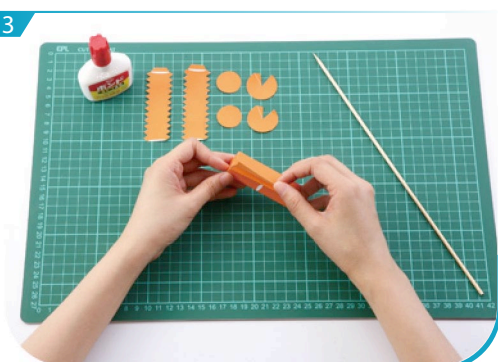
用沒有墨水的原子筆或鐵筆劃一下摺線。

2



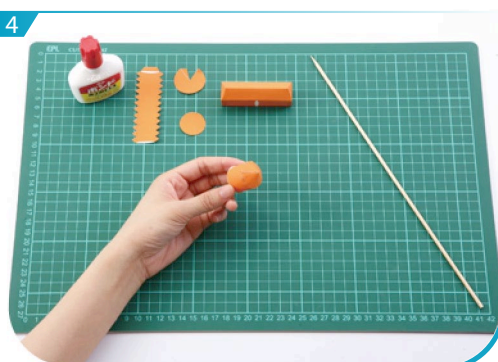
沿線剪出所有組件。為免混淆，可先在組件背面劃上記號。

3



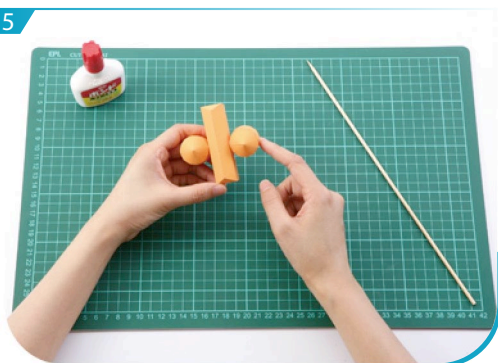
將M04摺疊貼好。

4



將M01, M02及M03貼好，形成圓柱體。

5



將M01、M02、M03及M04按組合說明貼好，即成立體除號。