

Product specification

MODEL NUMBER	EI-P6501	EI-P7501	EI-P8601
SKU Number	V12HC40056	V12HC41056	V12HC42056
<b>Display</b>			
Screen size	165 cm (65")	190.5 cm (75")	218.44 cm (86")
Panel type	IPS	IPS	IPS
Aspect ratio	16:09	16:09	16:09
Resolution	UHD 3840 × 2160 pixels (4K)	UHD 3840 × 2160 pixels (4K)	UHD 3840 × 2160 pixels (4K)
Response time	8 ms	8 ms	8 ms
Color depth	10-bit	10-bit	10-bit
Orientation	Landscape	Landscape	Landscape
Operation hours	16 hours / 7 days	16 hours / 7 days	16 hours / 7 days
Panel brightness (typical)	typ 400nits	typ 400nits	typ 400nits
Contrast ratio (typical)	1200:1	1200:1	1200:1
Dynamic contrast ratio	5000:1	5000:1	5000:1
Color gamut	72% NTSC	72% NTSC	72% NTSC
Backlight life (typical)	50,000 hrs	50,000 hrs	50,000 hrs
<b>System</b>			
Memory   Storage	8 GB   128 GB	8 GB   128 GB	8 GB   128 GB
OS	Android 14.0 (EDLA Certified)	Android 14.0 (EDLA Certified)	Android 14.0 (EDLA Certified)
CPU	Octa-Core, A72*4+A53*4	Octa-Core, A72*4+A53*4	Octa-Core, A72*4+A53*4
<b>Glass</b>			
Anti-glare	Yes	Yes	Yes
Hardness	9H tempered	9H tempered	9H tempered
IP Rating	IFP5X	IFP5X	IFP5X
<b>Touch screen</b>			
Touch technology	High Precision IR	High Precision IR	High Precision IR
Touch points	Up to 40	Up to 40	Up to 40
Touch response time	≤ 10 ms	≤ 10 ms	≤ 10 ms
<b>Connectivity</b>			
VGA	1	1	1
HDMI (in   out)	3 × HDMI 2.0 (Front 1 & Rear 2)   1 × HDMI 2.0	3 × HDMI 2.0 (Front 1 & Rear 2)   1 × HDMI 2.0	3 × HDMI 2.0 (Front 1 & Rear 2)   1 × HDMI 2.0
DisplayPort	1 × 1.2a	1 × 1.2a	1 × 1.2a
USB-A (3.0) x 3	Front 2 & Left side 1	Front 2 & Left side 1	Front 2 & Left side 1
USB-A (2.0) x 2	Left side 1 & Left bottom 1	Left side 1 & Left bottom 1	Left side 1 & Left bottom 1
USB-C	Front USB 3.1, PD 65 W w/o OPS, PD 15 W with OPS	Front USB 3.1, PD 65 W w/o OPS, PD 15 W with OPS	Front USB 3.1, PD 65 W w/o OPS, PD 15 W with OPS
USB-B (for touch)	2 × 3.0 (Front 1 & Rear 1)	2 × 3.0 (Front 1 & Rear 1)	2 × 3.0 (Front 1 & Rear 1)
VGA 3.5 mm Line in	Audio Input x 1	Audio Input x 1	Audio Input x 1
VGA 3.5 mm Line out	Earphone x 1	Earphone x 1	Earphone x 1
OPS slot (for slot-in PC)	1	1	1
Wi-Fi	Wi-Fi 6E, Wi-Fi slot	Wi-Fi 6E, Wi-Fi slot	Wi-Fi 6E, Wi-Fi slot
Bluetooth®	Bluetooth 5.3	Bluetooth 5.3	Bluetooth 5.3
Ethernet	2 (10 M/100 M/1000 Mbps)	2 (10 M/100 M/1000 Mbps)	2 (10 M/100 M/1000 Mbps)
3.5 mm Line in (2)	Shared with Audio input	Shared with Audio input	Shared with Audio input
RS-232	1	1	1
<b>Built-in Features</b>			
NFC sensor	Yes (Optional)	Yes (Optional)	Yes (Optional)
Ambient light sensor	Yes	Yes	Yes
IR sensor	Yes	Yes	Yes
Speaker	2 × 20 W (Minimum)	2 × 20 W (Minimum)	2 × 20 W (Minimum)
<b>Power</b>			
ENERGY STAR®	Yes	Yes	Yes
Power	AC 100-240 V 50/60 Hz	AC 100-240 V 50/60 Hz	AC 100-240 V 50/60 Hz
Standby power consumption	<0.5 W	<0.5 W	<0.5 W
Typical power cons	165.5 W	154.1 W	228.4 W
<b>Physical</b>			
Dimensions (W x H x D)	1491 × 898.5 × 98.8 mm	1712 × 1022 × 99 mm	1957 × 1159.9 × 97.1 mm
Shipping dimensions (W x H x D)	1628 × 1014 × 185 mm	1863 × 1148 × 225 mm	2110 × 1283 × 225 mm
Weight (product   shipping)	30.35 kg / 37.67 kg	42.07 kg / 51.38 kg	50.73 kg / 66.62 kg
Wall Mount Bracket & screws	WIB6540B	WIB9060H	WIB9060H
<b>Environment</b>			
Operating temperature	0°C ~ 40°C   32°F ~ 104°F	0°C ~ 40°C   32°F ~ 104°F	0°C ~ 40°C   32°F ~ 104°F
Storage temperature	-10°C ~ 60°C   14°F ~ 140°F	-10°C ~ 60°C   14°F ~ 140°F	-10°C ~ 60°C   14°F ~ 140°F
Operating humidity	20% ~ 80% RH non-condensing	20% ~ 80% RH non-condensing	20% ~ 80% RH non-condensing
<b>Software</b>			
Interactive Tools Software	Yes	Yes	Yes
Wireless screen sharing	Yes	Yes	Yes
Device management	Yes	Yes	Yes
Account management	Yes	Yes	Yes
Quick access tool	Yes	Yes	Yes
Broadcast system	Yes	Yes	Yes
Flicker Free	DC dimming, no flicker	DC dimming, no flicker	DC dimming, no flicker
Low Blue Light	Yes	Yes	Yes
<b>Built-in Accessories (Box)</b>			
Cables	3 Mtr HDMI x 1 + USB A to B x 1	3 Mtr HDMI x 1 + USB A to B x 1	3 Mtr HDMI x 1 + USB A to B x 1
Wall mount	1 Set with mounting screws	1 Set with mounting screws	1 Set with mounting screws
Pen	2	2	2
Remote control	1	1	1
Remote control batteries	2	2	2
User Manual	Yes	Yes	Yes
<b>Optional Accessories</b>			
Additional Pen	1	1	1
<b>Warranty Terms</b>			
Interactive Flat Panel	3 years warranty	3 years warranty	3 years warranty

<sup>†</sup>Futuresource Quarterly Market Insight Report, FY2024.

<sup>‡</sup>Diagonal screen size.

<sup>\*</sup>Google, Google EDLA badge and other mentioned logos are trademarks of Google LLC or the respective brands. Use of the Google EDLA certification logo is for informational purposes only and indicates compatibility with Google's EDLA requirements and device is preloaded with the software.

Product screen content and technology visuals are for illustrative purposes only. Actual product features and appearances may vary.

PRODUCT DISCLAIMER:

While efforts have been made to provide accurate information, there could be errors which may have crept in. In the event of any discrepancy, the Product Operating Instructions supplied with products shall be the authentic reference point. Features, specifications, dimensions, weight and prices mentioned are subject to change without prior notice. Actual products may differ slightly in appearance to illustrations/pictures provided.



EPSON INDIA PVT. LTD., 11<sup>th</sup> Floor, Godrej Centre, Hebbal, Survey No. 26, Bellary Road, Sahakar Nagar, Byatarayanapura, Bangalore 560 092, Karnataka. Tel: 080 6939 5000 Fax: 080 6939 5005



Epson PowerBoardPRO  
Interactive Flat Panels



The Power to  
Open Minds



Google EDLA  
certified



Powered by  
Android OS



Resolution



Compatible

40

Touch points





## Leading with Innovation



## About Epson

Epson is a global technology leader which focusses on efficient, compact and precise innovation to enrich lives and help create a better world. The company is focused on solving societal issues through innovations in home and office printing, commercial and industrial printing, manufacturing, visual communication and lifestyle products. Led by the Japan-based Seiko Epson Corporation, the worldwide Epson Group generates annual sales of approximately USD 9.1 billion. Epson India Pvt. Ltd. was established in 2000 and has since grown into a trusted name for millions of Indian consumers. Epson products address the needs of homes, businesses, and commercial enterprises as well as those of consumers with specialised needs in India.

From creating the world's first compact, lightweight digital printer and the iconic TV watch, to launching the first full-colour liquid crystal video projector and an Android-based wearable display, Epson has a remarkable record of pioneering innovation that has added genuine value to everyday life. Epson is also a global leader in projection technology, backed by its industry-leading 3LCD technology. Epson has been the world's No. 1 projector brand for 23 consecutive years and India's No. 1 brand for the past decade. In 2025 Epson celebrates 50 years since the brand came into existence, a milestone that reflects the trust of millions of consumers worldwide.



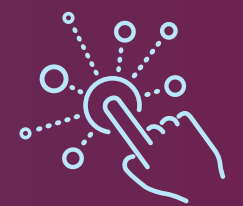
# The Power to Open Minds



## Epson PowerBoardPRO Interactive Flat Panels

### Made for Enhanced Learning

From early learning to higher education, the Epson PowerBoardPRO transforms teaching and inspires learning. It empowers teachers to create interactive lessons, spark collaboration, and share content effortlessly—all on one intuitive platform designed to make every classroom more engaging and connected.



Up to 40 touch points



20 writing points





# Google EDLA Certified<sup>^</sup>

Google EDLA (Education Device Licensing Agreement) certification ensures secure, seamless access to essential Google apps and services, optimised for education and learning.



Google Play

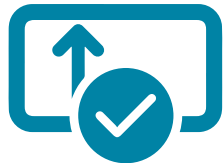
## Google Play

Access your favourite education apps directly on the Epson PowerBoardPRO Interactive Flat Panel. No extra setup required.



## Work Without Limits

All the essential Google services you need - Search, Chrome, YouTube, Play Store, Drive, Gmail, Meet, and Maps, come built-in on the Epson PowerBoardPRO, so you can start teaching and collaborating without any extra setup.



## Regular Updates & Core Google Services

The Epson PowerBoardPRO stays up to date with regular Google Play Services updates, ensuring your apps have the latest features and security enhancements. It also supports essential Google services such as authentication, synced contacts, and location-based functionality, so your classroom experience is always seamless and reliable.



# Robust Hardware, Engineered to Perform

Featuring a 4K display, anti-glare toughened glass, and high-precision touch, the Epson PowerBoardPRO is built to withstand daily classroom use while delivering a smooth, immersive interactive experience.

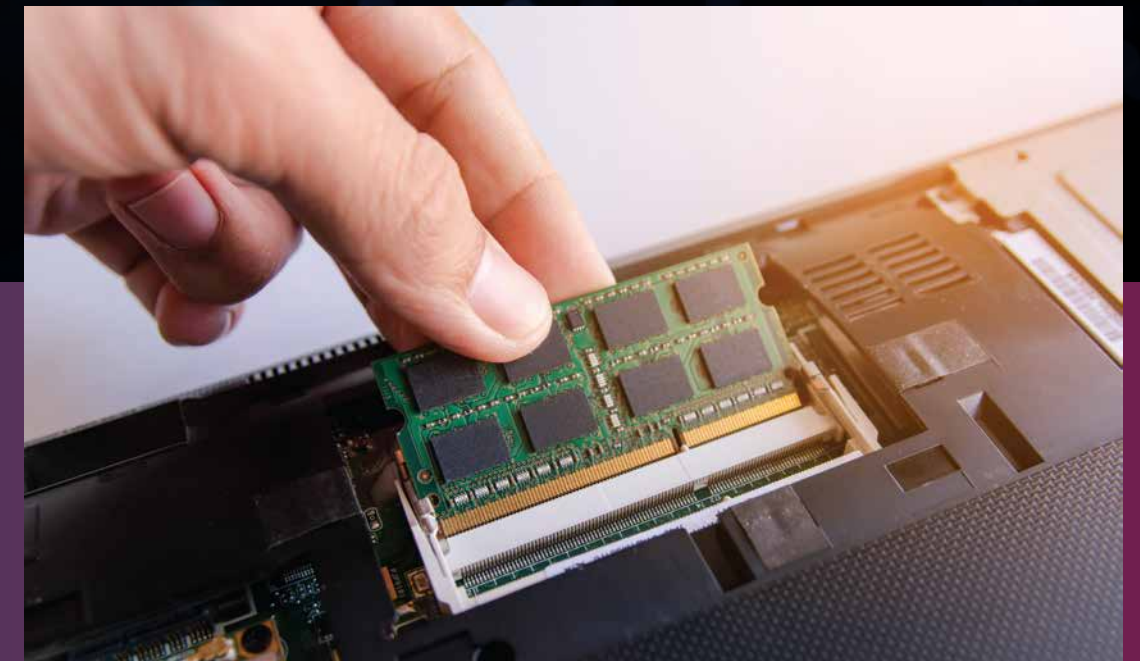
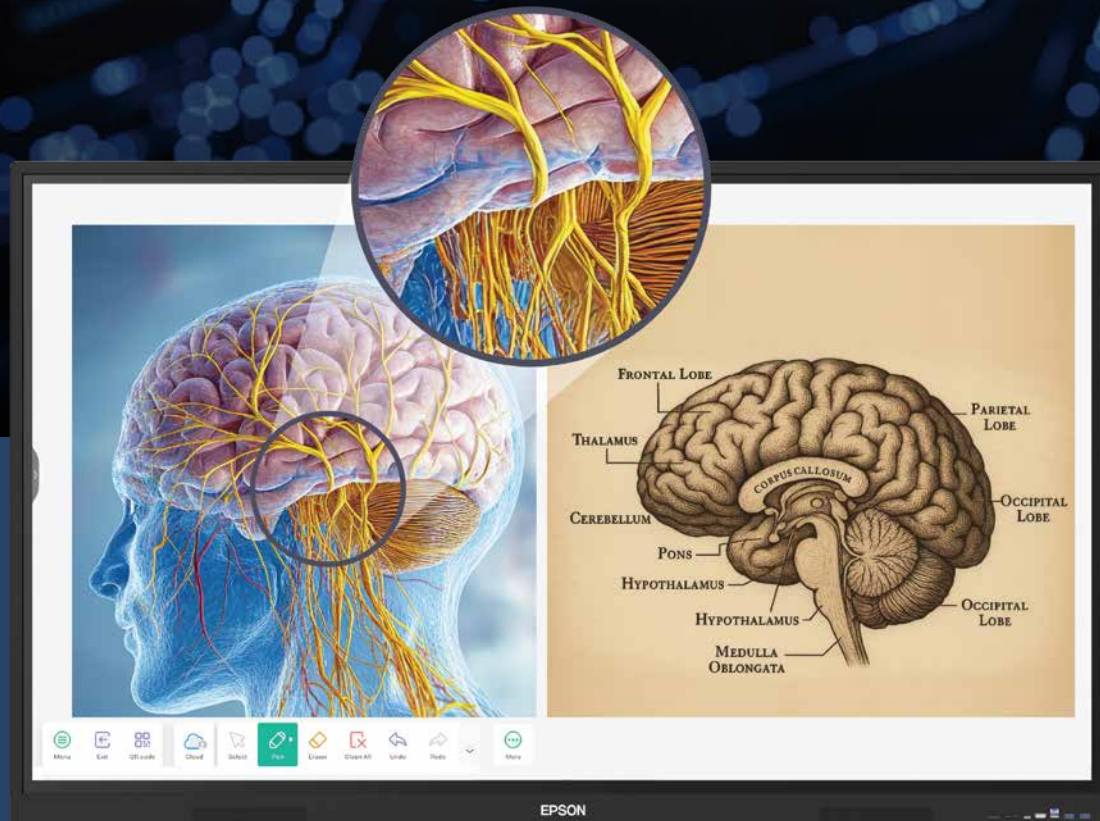
## ► High-Performance Processing

Equipped with an Octa-Core processor (A72x4 + A53x4) and Mali-G52 MC3 GPU, the Epson PowerBoardPRO delivers smooth, responsive performance and vibrant graphics, making every lesson fast, fluid, and visually engaging.



## ► 4K Ultra HD Display

Stunning clarity with 3840x2160 resolution, complete with 4K UI and annotation support. The 60 Hz flicker-free display delivers sharp, smooth visuals for presentations, lessons, and multimedia content.



## ► Expandable Memory

Equipped with 8 GB RAM and 128 GB storage, the Epson PowerBoardPRO handles apps, lessons, and media seamlessly, with the option to expand storage via a TF card for added flexibility.





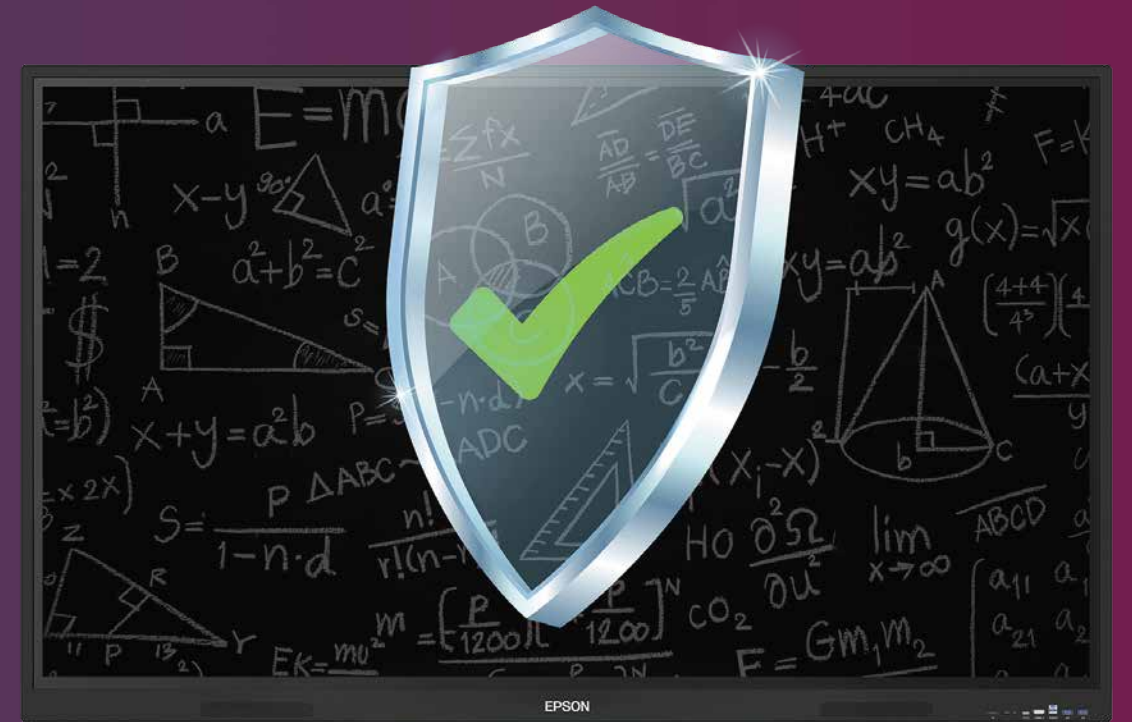
### ► Built-in Audio

Dual 20 W speakers deliver clear, immersive sound, ensuring every lesson, video, or presentation is heard with precision and impact, without the need for external speakers.



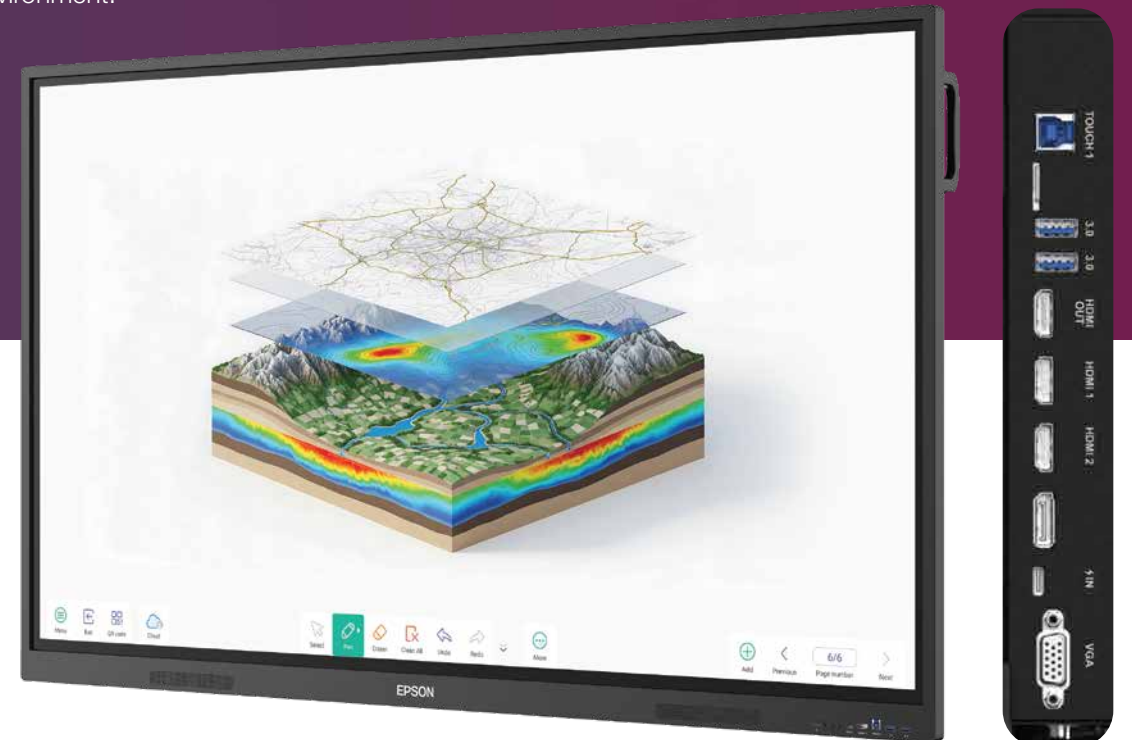
### ► Wide Viewing Angle

Ensures consistent clarity from every seat, keeping all students engaged and making lessons easier to follow across the classroom.



### ► Toughened Protection

9H tempered, anti-glare glass provides durable, everyday protection while keeping the display safe and easy to view in any classroom environment.



### ► Front and Rear Connectivity Ports

Quick access to front ports makes everyday connections effortless, while a full range of rear I/O ports supports more complex setups, offering flexible connectivity for devices, peripherals, and accessories.





Isaac Newton

Mathematics

- Calculus
- Generalisation of the binomial theorem

Physics

- Newton's laws of motion
- Universal gravitation

Astronomy

- Research
- On the motion of the

# Built-in Software, Designed to Inspire

With PowerNotePro, intuitive classroom apps, and Bytello AI, the Epson PowerBoardPRO empowers educators to create dynamic lessons, personalise learning, and make every session engaging.



# Epson PowerNotePro

Easy-to-use writing and annotation tools make everyday classroom lessons and meetings more interactive and impactful.



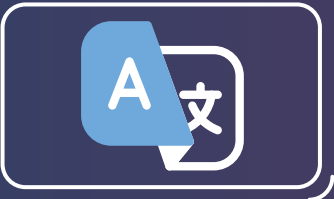
## Regional language compatibility

Supports 10 Indian languages + 2 foreign languages to make learning more inclusive and accessible.



## Real-time translation

Break the language barriers with instant, real-time translation during lessons.



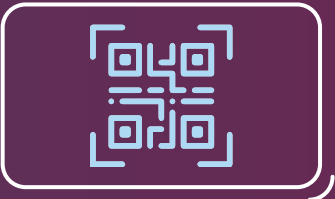
## Advanced search

Quickly find notes, lessons, or references with powerful search.



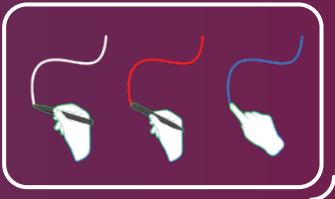
## QR code notes sharing

Share class notes instantly via QR code for quick student access.



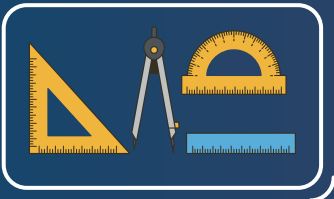
## Smooth writing, easy note-taking

Write naturally and take notes effortlessly, just like on paper.



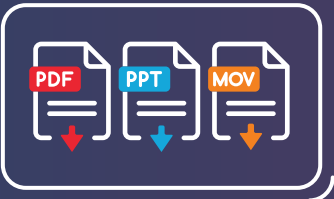
## Geometric & subject-specific tools

Teach complex concepts easily with built-in subject-specific tools.



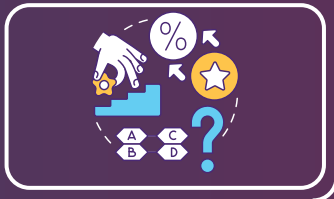
## Multiple format import (PPT, PDF, video, etc.)

Bring lessons alive by importing content from multiple file formats with ease.



## Interactive simulations & gamified quizzes

Make learning fun and engaging with interactive simulations and quizzes.



## Cloud storage options

Save and access lessons anytime with secure cloud storage.





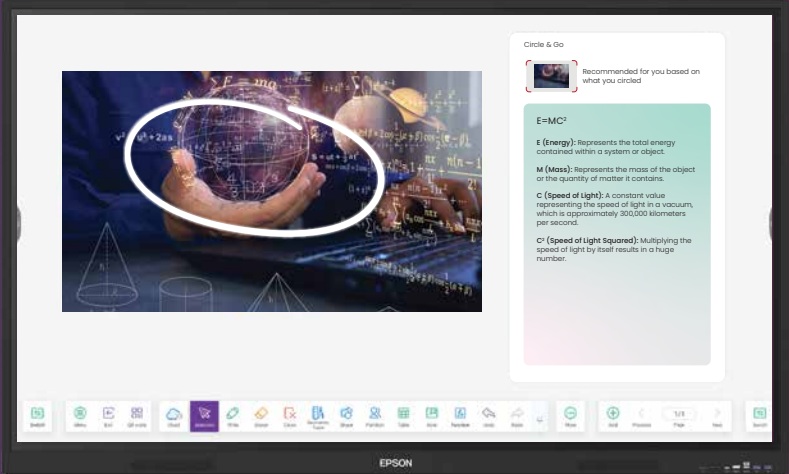
# AI-Powered Learning with Bytello\*

Seamlessly enhanced with Bytello and Bytello AI software.



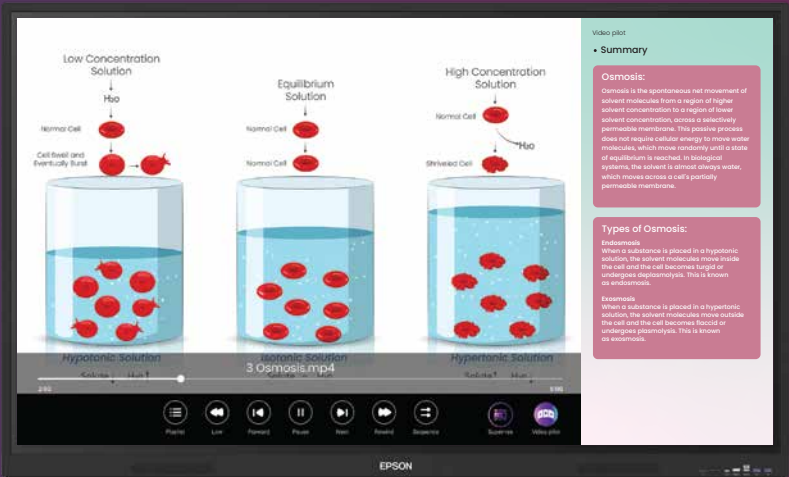
## Live Subtitles

Converts audio into real-time subtitles—perfect for language learning and clearer classroom communication.



## Circle & Learn

Simply circle what you want to know, and AI instantly brings the answers to the screen.



## Video Pilot

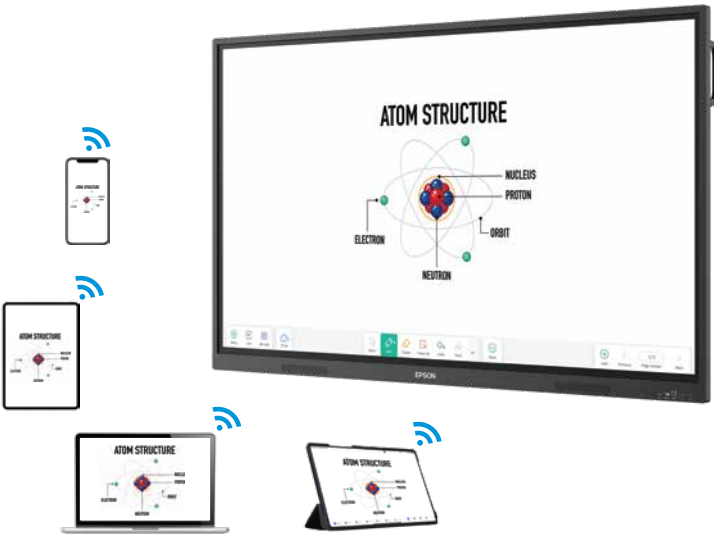
Creates subtitles and summaries so you can jump straight to key moments. Also supports live translation in regional languages for greater accessibility.

And many more AI-powered features to make classroom learning smarter and more interactive.

\*Bytello AI subscription sold separately. Some features may require internet connectivity.

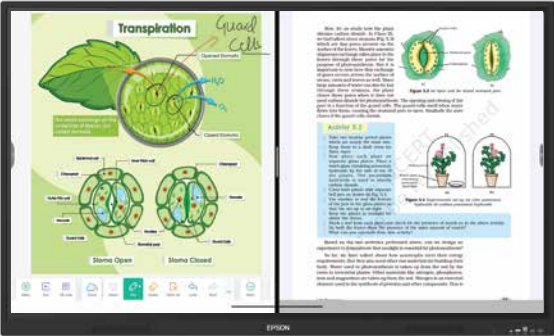
## Wireless Sharing

Easily share lessons with up to 9 screens simultaneously for multi-display classrooms.



## Split Screen and Picture-in-Picture Mode

Work with content and whiteboard side by side or run Android and Windows together with Picture-in-Picture mode.



## Advanced Operating System

Powered by Android 14.0 (EDLA Certified) for a secure, seamless, and intuitive experience.



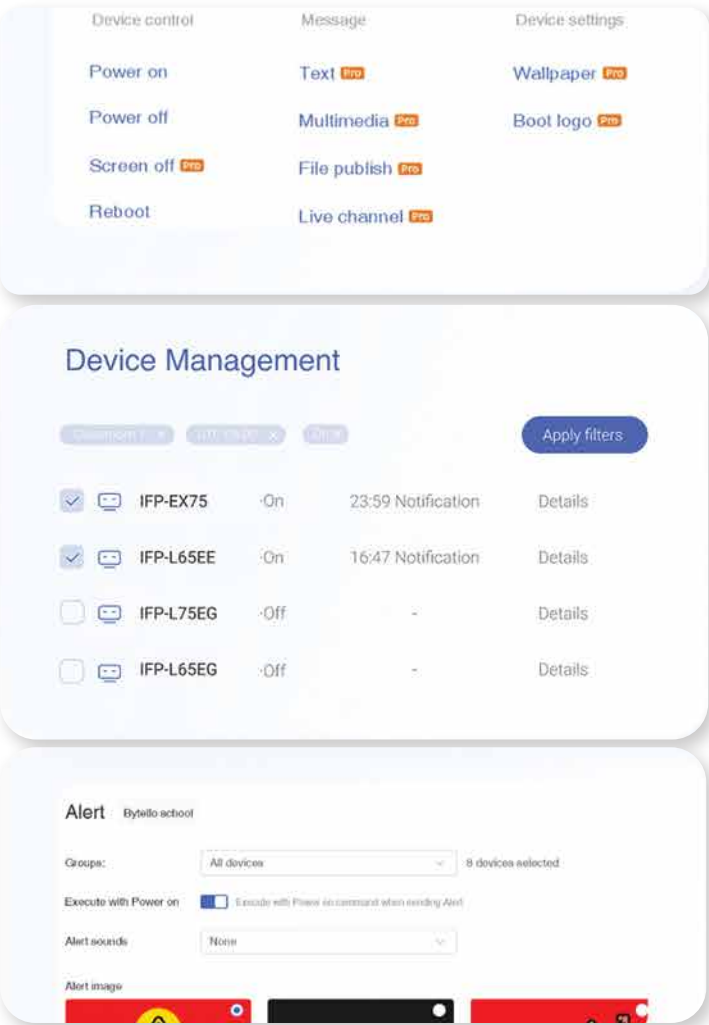


# Device Management System

An efficient, real-time, and unified solution to manage your Epson Interactive Flat Panel Displays devices. Manage devices in real time via the web: control groups, adjust brightness and volume, and receive instant notifications.

## ▶ Insights & Analytics

Get detailed device and application usage reports to comprehensively understand usage and optimise resources effectively.



## ▶ Convenient Management

Offers flexible commands for daily IT needs, including remote power on/off, screen off, reboot, and sending messages or setting wallpapers/boot logos.



## ▶ Unified Control

Provides control over Interactive Flat Panels. Compatible with Android and Windows OS.



## ▶ Scheduling

Schedule tasks for specific times using immediate, recurring, and timed modes for minimal disruption.

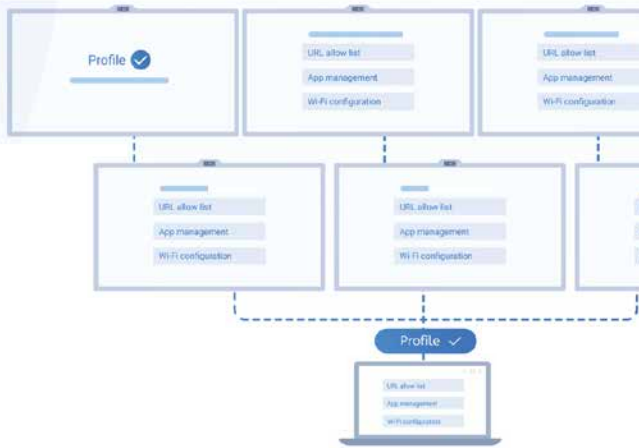


## ▶ Batch Deployment

Quickly set up and deploy a large number of devices remotely in batches, configuring settings like time, network, firewall, and device lock to save significant time.

## ▶ Remote Maintenance

Remotely install, uninstall, enable, and disable applications on multiple devices. Easily update IFP firmware to keep devices secure and stable and use features like remote screen control for troubleshooting.



## All-round Service. All-round Performance.

Meeting expectations is a tough job, but with Epson after-sales service you can be sure that we're more than happy to help you, whatever be your need. Epson's network of independent service specialists offers authorised repair services. From troubleshooting to diagnosis and repair, you'll find everything you need to keep your product in peak condition, including:

Free advice | On-the-spot repair and WhatsApp service support | Highly trained engineers

In India, Epson has 400+ service centres across the country.

