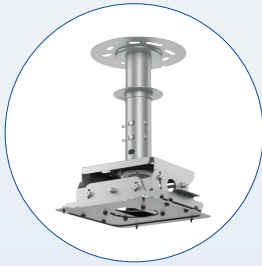




# Mounts & Frames for Pro Series Projectors

Accessories to Simplify Even  
the Most Complex Installations



### Ceiling Mount with Precision Adjustment

The highly adjustable ELPMB68 provides precise image alignment. It can be paired with an extensive number of accessories, providing the flexibility needed to support the most challenging installations.

- **Precise projector image alignment** — with dual fine adjustment knobs
- **Tilt angle support** — 360-degree swivel and up to 30-degree tilt angle
- **Flexible installation** — works with a broad range of accessories for convenient installation in a wide variety of environments
- **Quick connect** — an integrated quick-connect mechanism makes projector attachment or removal easy
- **Handles heavy loads** — capacity to hold up to 99 lb (45 kg); a hexagonal wrench can be used on the adjustment knobs for positioning alignment of heavy loads



### Configurations (Projectors Sold Separately)

---



ELPMB68 and PowerLite® L770U



ELPMB68 and EB-PJ1008B



ELPMB68 and ELPMB69 Portrait Adapter  
with ELPMB71 Truss Adapter  
(truss clamp not included)

## Ceiling Mounts and Accessories



### ELPMB70 - Extension Column

The adjustable extension column is designed to handle a wide range of high-ceiling applications. Select from 11 increments to accommodate the ideal projector height. Length: 27" to 42.7" (685 mm to 1,085 mm).



### ELPMB71 - Truss Adapter

The truss adapter accommodates the attachment of the ceiling mount to a truss for secure and precise projector positioning.



### ELPMB85 - Rail Adapter

Designed for ultra short throw lens applications and other instances where a projector does not have zoom capability, the ELPMB85 provides precise forward/back adjustment via its ratcheting wrench for hassle-free installation.



### ELPMB69 - Portrait Adapter

This L-shaped column enables a projector to be positioned in portrait orientation. The ceiling mount paired with this adapter supports projectors up to 44 lb (20 kg).

Sliding mounts support a wide range of Epson® projectors

Dual fine adjustment knobs



Supports up to 99 lb (45 kg)

## Configurations



ELPMB68 and ELPMB70  
Extension Column

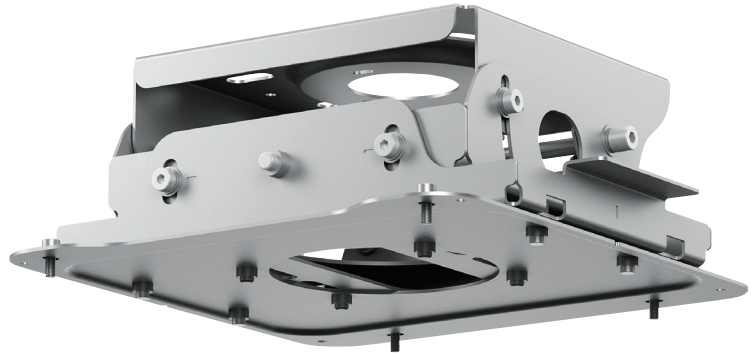


ELPMB68 and ELPMB71 Clamp Adapter  
(truss clamp not included)

### Adjustable Ceiling Mount for Streamlined Installation

The ELPMB67 supports a variety of adjustments—including vertical, horizontal and rotational tilt—to accommodate a wide range of applications.

- **Provides a wide range of adjustment options** — including vertical, horizontal and rotational tilt
- **Forward and backward slide capability** — compensates for lenses that lack zoom, such as ultra short throw lenses; slide up to +/-36 mm
- **Supports 360-degree directional mounting** — for portrait-projection, inclined-ceiling and desktop-mounting applications
- **Tilt angle** — vertical: +5 to -15 degrees; horizontal: +5 to -5 degrees
- **Handles heavy loads** — capacity to hold up to 88 lb (40 kg)



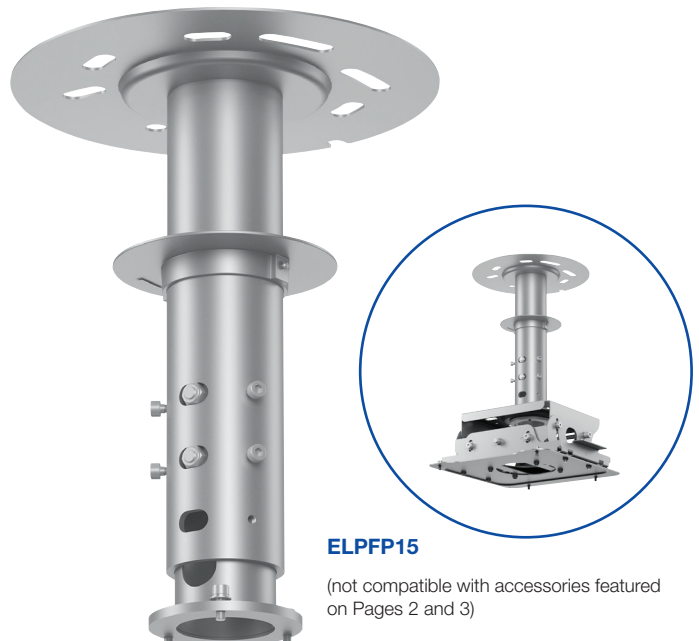
**ELPMB67**

(not compatible with accessories featured on Pages 2 and 3)

### Suspension Adapter for High-Ceiling Installations

Pair the ELPFP15 suspension adapter with the ELPMB67 mount to support high-ceiling projector installations. The adapter features an adjustable pole length up to 8.7" (220 mm) and a durable mounting plate for added ease of use.

- **Flexible installation** — adjustable pole length of 8.7" (220 mm) to accommodate a variety of applications; mounting plate included
- **Full length of mount** — 18.1" (460 mm) up to 26.8" (680 mm)



**ELPFP15**

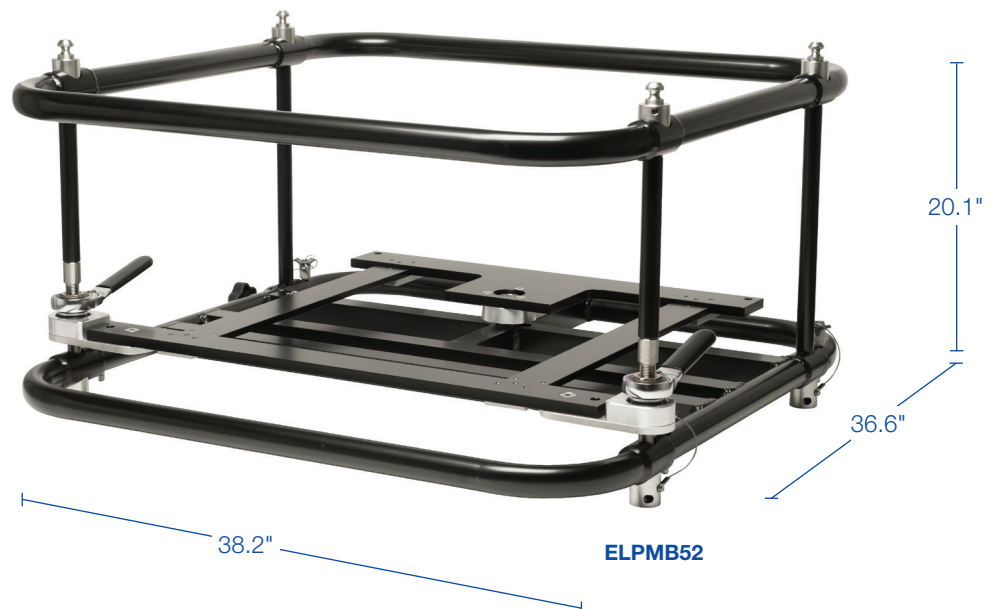
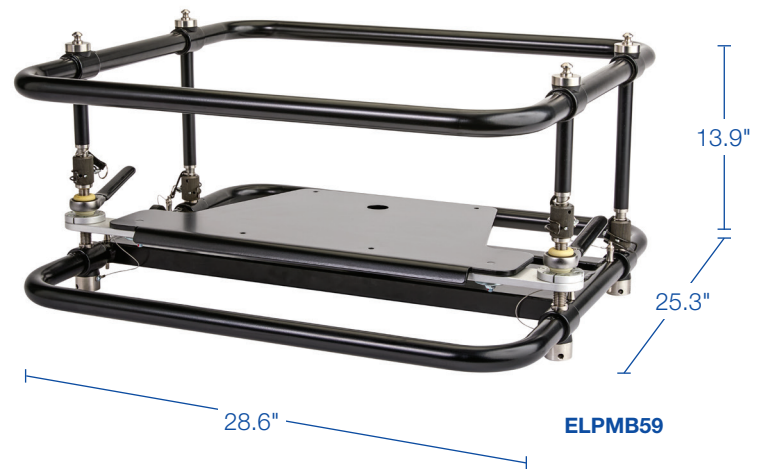
(not compatible with accessories featured on Pages 2 and 3)



# Stacking and Rigging Frames for Flexible Projector Positioning

The ELPMB52 and ELPMB59 provide protection to projectors during transport and allow for easier handling during the installation process. With a convenient design engineered for optimum functionality, the ELPMB52 and ELPMB59 feature tilt, horizontal and vertical adjustments. Each frame allows installers to stack up to three projectors.

- **Compatible** — ELPMB52 works with the Pro L30000U and Pro L25000U projectors; ELPMB59 works with EB-PU Series, EB-PQ Series and Pro L1000 Series projectors
- **Added peace of mind** — protects the projector during transport
- **Cabrio mode** — for easy setup and short throw lens compatibility, lower frame ring can be used on its own
- **Tilt, horizontal and vertical adjustments** — built-in 3-axis adjustments
- **Versatile** — enables installers to stack up to three projectors

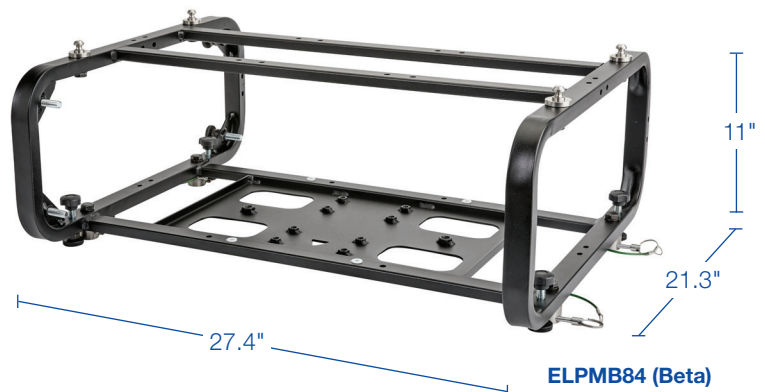
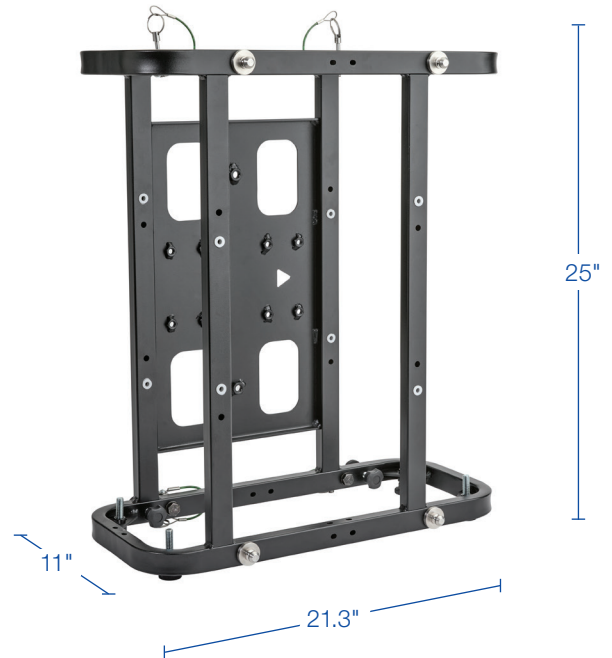


# Projector Stacking Frames with a Modular Design

The ELPMB76 (Alfa) and the larger ELPMB84 (Beta) provide a cost-effective way to horizontally or vertically stack projectors, enabling installers to dramatically increase displayed image brightness and add redundancy. Placement is flexible, with suspended installation and floor installation options. The stacking frames also act as a protective enclosure, providing peace of mind during installation and handling. Their modular design allows for the easy integration of a broad range of accessories for powerful added functionality.

- **Compatible** — the ELPMB76 works with the EB-PQ2000 and EB-PU1000/2010 Series projectors; the ELPMB84 works with the EB-PQ2200, EB-PU2100/2200 and Pro L1000 Series projectors
- **Vertical and horizontal stacking of multiple projectors** — allows for higher displayed image brightness<sup>1</sup> and redundancy
- **Added peace of mind** — stacking frame protects the projector from impact and makes it easy to grasp and move the projector
- **Intuitive modular system of accessories** — allows installers to choose the most appropriate level of fine adjustment and mounting flexibility for each installation
- **Flexible installation** — stack up to two cages for suspended installation and up to three cages for floor installation
- **Accommodates truss clamps** — features two threaded holes for M10 thread truss clamps (not included)

ELPMB76 (Alfa)



## Configurations (Projectors Sold Separately)



ELPMB84 and EB-PU2220B  
Frames and Projectors (stacked)



ELPMB84 and EB-PU2220B  
with ELPLX02S Ultra Short Throw Lens



ELPMB76 with Two Truss Clamps  
(not included)



ELPMB84 and EB-PU2220B  
in Portrait Orientation

## Frames and Accessories



### ELPMB77 - Tilt Adapter Mounting Plate

The versatile tilt adapter mounting plate adds very precise tilt angle adjust and fine calibration capability to Epson EB-PU/EB-PQ Series projectors and stacking frames.



### ELPMB79 - Mounting Arm

The mounting arm accommodates projector ceiling or wall installation. The arm's sliding bracket fastens at the desired location and provides 14.6" (370 mm) of adjustment range. In addition, it enables projection in three different orientations: landscape, portrait and floor.



### ELPMB78 - Portrait Adapter Bar

The portrait adapter bar includes a clamp and allows for portrait projection on stacking frames (Alfa and Beta).



### ELPMB80/ELPMB83 - Truss Adapter Bar

The truss adapter bar allows the stacking frame to be mounted to a vertical or horizontal truss. The ELPMB80 is for the Alfa stacking frame and the ELPMB83 is for the larger Beta frame.



### ELPMB81 - Tilt Adapter

The tilt adapter adds wide orientation and adjustment angles with fine calibration capability. It features 360-degree rotation on three axes for precise adjustment and includes a clamp to enable truss mounting.



### ELPMB85 - Rail Adapter

Designed for ultra short throw lens applications and other instances where a projector does not have zoom capability, the ELPMB85 provides precise forward/back adjustment via its ratcheting wrench for hassle-free installation.

## Configurations



ELPMB84 with  
ELPMB81 Tilt Adapter



ELPMB76 with ELPMB78  
Portrait Adapter Bar



ELPMB84 with ELPMB85  
Rail Adapter and ELPMB81 Tilt Adapter



ELPMB84 with ELPMB83  
Truss Adapter Bar



**Epson America, Inc.** 3131 Katella Ave., Los Alamitos, CA 90720

**Epson Canada Limited** 185 Renfrew Drive, Markham, Ontario L3R 6G3

Please visit us at [www.epson.com/largevenue](http://www.epson.com/largevenue)

<sup>1</sup> Requires stacked projectors and image alignment to increase displayed image brightness.

EPSON and PowerLite are registered trademarks of Seiko Epson Corporation. All other product and brand names are trademarks and/or registered trademarks of their respective companies. Epson disclaims any and all rights in these marks. Copyright 2024 Epson America, Inc. CPD-64229 6/24