



Epson SureColor P8570D

Production Photo & Graphic Art

Sales Resource Guide v1.4

 POWERED BY
Adobe Embedded Print Engine

Power Up Productivity

Now you can get the industry-leading reliability and exceptional image quality that Epson is known for in a wide-format printer purpose-designed for high-volume photo production.

With the new Epson SureColor P8570D, you get incredible print speeds, dual roll capability, and 8-color photo quality using 6 inks. One powerhouse printer. Multiple innovations that will power up the productivity of your business.



Introducing the SureColor P8570D

Printer Overview

**Professional
Imaging**



Epson SureColor P8570D 44"
with Adobe Embedded Print Engine

MSRP - \$6,445.00

SureColor P-Series: Production Class

**Professional
Imaging**



Consumer Photo / Poster 24" – 44"

- Consumer "Everyday" Photo
- Photo Lab, Print Service Provider
- High Volume Photo Production

6 Color with Gray



Production Fine Art 24" – 44"

- Color Critical Photo & Fine Art
- Professional Photography
- Proofing

12 Color with K3



Production Photo / Fine Art 64"

- Color Critical Photo / BW
- Large Format Production
- Fine Art Production

10 Color with K4

Users & Applications

**Professional
Imaging**



Volume Photo Fulfillment

Fleet “Multi Unit” Operations

National Fulfillment – Photo / Poster

B2B / B2C Photo / Poster



Production Poster

Décor Art / Specialty

Limited Run Large Format

Rigid Posterboard



Photo Lab / Retail

“Every Day” Photography

Specialized Photo Print Products

Canvas and Enlargements

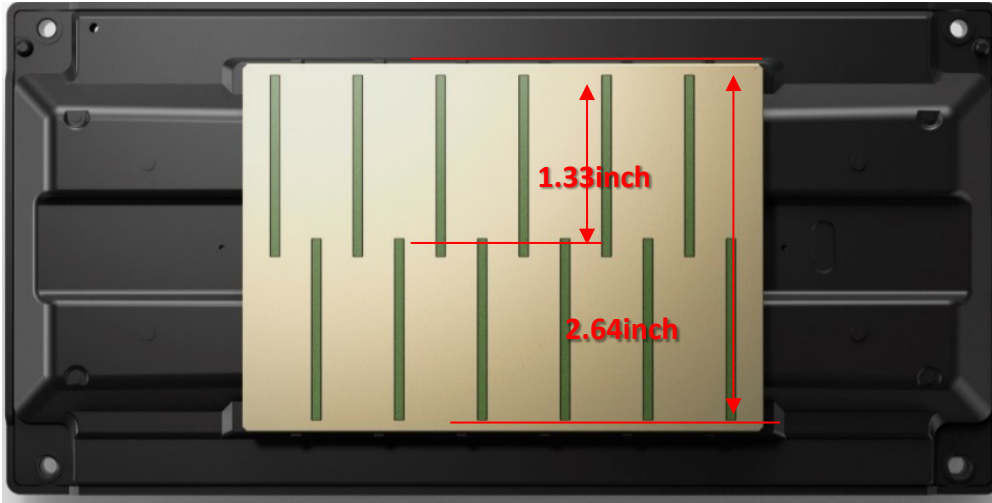


Service Providers

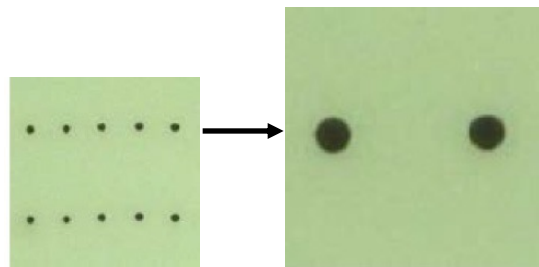
Photo and Graphic Art Prints

Point of Purchase Graphics

Indoor Graphics



PrecisionCore 2.6" MicroTFP printhead



Actual Ink Droplet on Paper
Magnified 150x

Extreme Print Quality, Precision, and Speed

- Latest generation PrecisionCore head
- Precise and accurate ink drop control
- Variable size droplets as small as 3.5 picoliter

Commercial Grade Reliability

- Industrial Reliability designed to last the life of the printer
- Nozzle Verification Technology (NVT)
 - detects nozzle condition and adjusts if clogged
- Ink repelling coating reduces the chance of a nozzle clog

UltraChrome PRO6 Ink Technology

Professional
Imaging



ULTRACHROME
PRO6 INK



Photo Black Matte Black Yellow Magenta Cyan Gray

Epson UltraChrome® Ink

- Aqueous based pigment
- Image Permanence Tested
- 6-color inkset with GRAY
 - for smooth gradations and less graininess
- 110, 350, or 700 mL cartridges

1.6L Ink Pack (L Printer Models)

- Cost effective for production
- Helps reduce waste
- Large capacity for efficiency





Embedded RIP Controller

- Standard in P8570D, P8570DL, P6570D
- Live transparency blending and smoother shades
- Adobe Color Engine (ACE)
- Print from phone, tablet and USB drive
- Built for max speed
- Apple AirPrint Certified

Previous workflow (without PDF)

4 steps



New workflow (with PDF)

1 step!



Printer Version Options

Professional
Imaging

Available Models

24" Class

- P6570E Single Roll without AEPE*
- P6570D Dual Roll with AEPE*
- P6570DE Dual Roll without AEPE

44" Class

- P8570D Dual Roll with AEPE
- P8570DL Dual Roll with 1.7 L Ink Packs and AEPE*



 POWERED BY
Adobe Embedded Print Engine

*Coming Fall 2022

Now Shipping June 2022

Quick Product Overview

**Professional
Imaging**



Full-Line of 24" and 44" Models



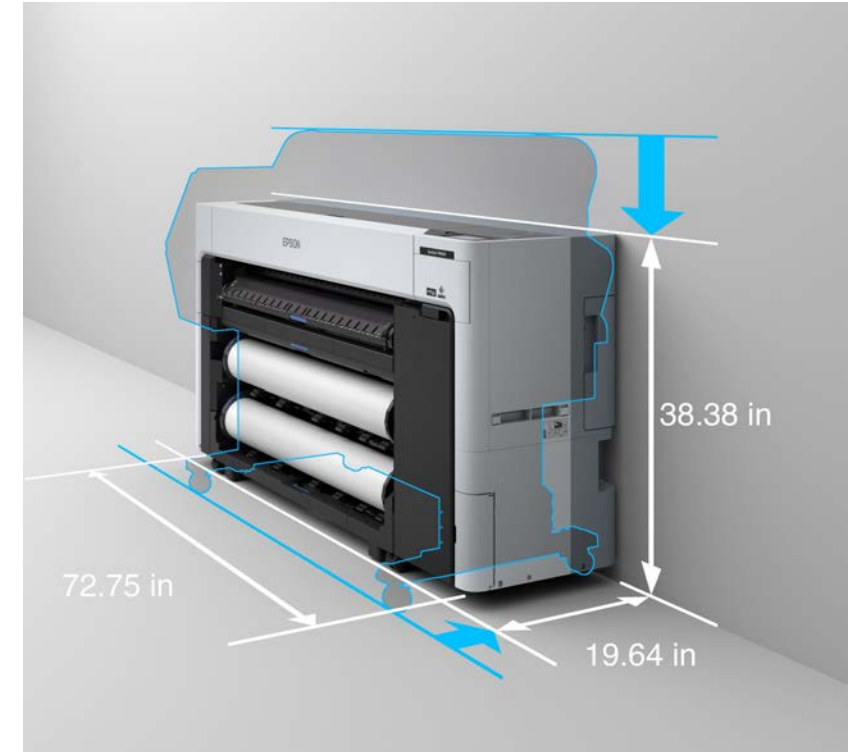
**ULTRACHROME
PRO6^{INK}**

EPSON
EXCEED YOUR VISION

An Innovative Approach

■ Production class printing that's compact

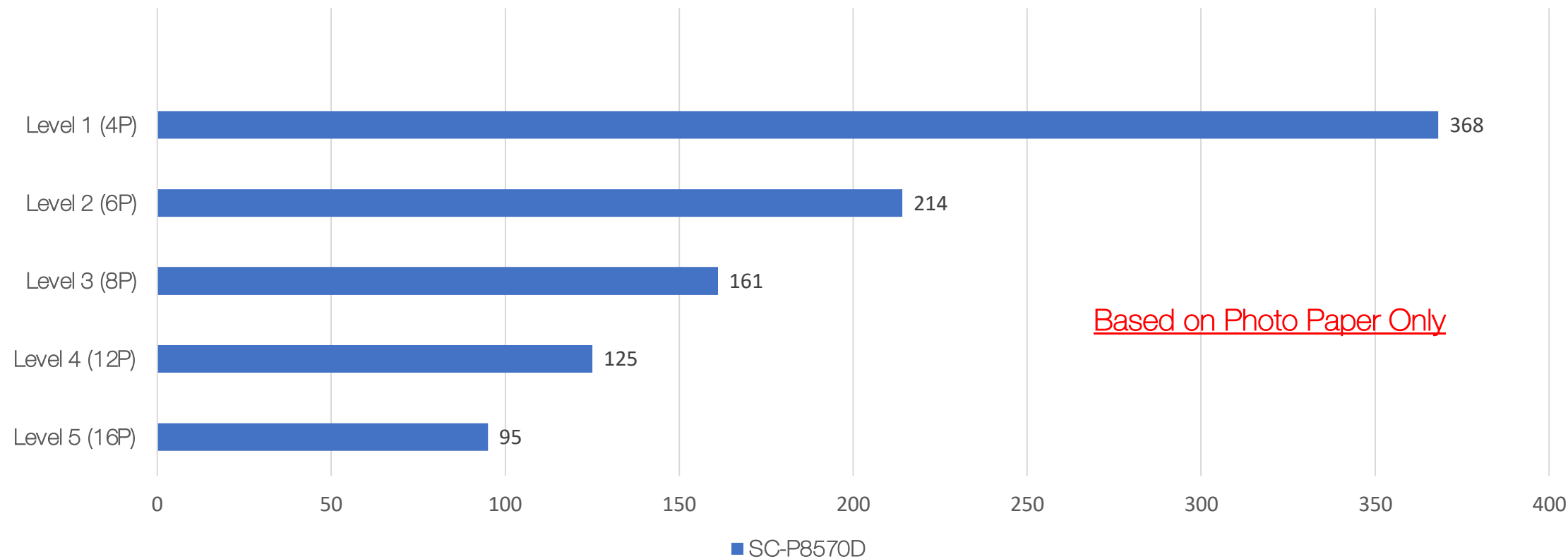
- Robust, functional design with no assembly needed
- Unpack and setup in less than 30 minutes.
- Complete front operation
- flat back can be pushed up against a wall



Compact and versatile printer placement for efficient workflow

P8570D Print Modes

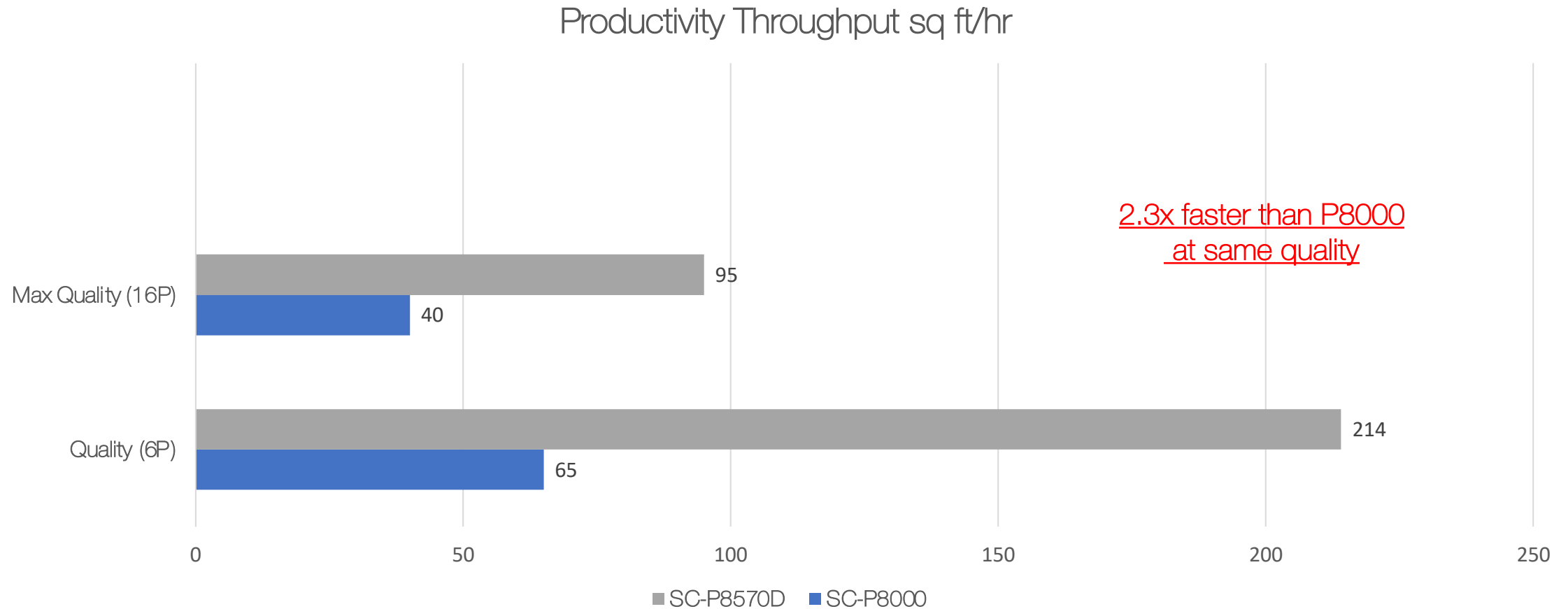
Productivity Throughput sq ft/hr



*Throughput is preliminary and will be updated by release date. Values calculated based on B0+ Media, print data: bike image. Photo Paper. Time: from first pass to end of last pass (not including cutting).

Specifications subject to change

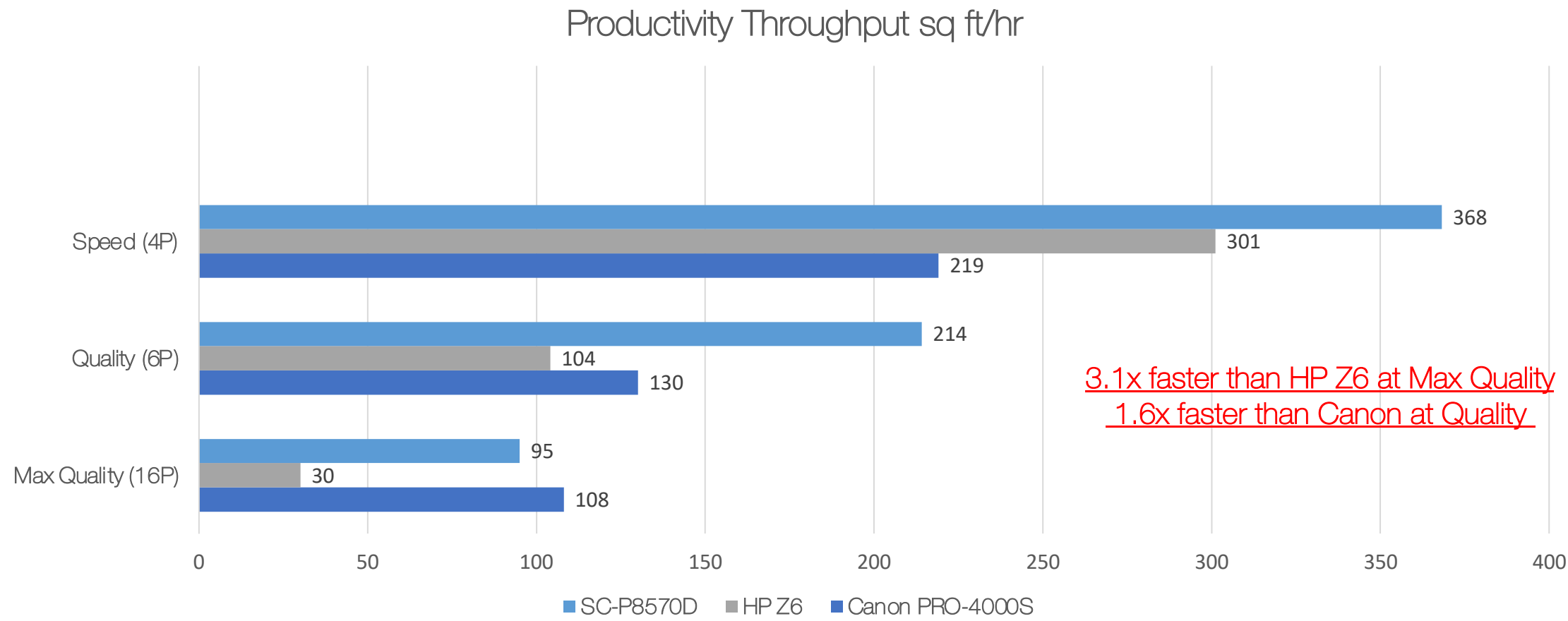
P8570D vs P8000 Print Speeds



*Throughput is preliminary and will be updated by release date. Values calculated based on B0+ Media, print data: bike image. Photo Paper. Time: from first pass to end of last pass (not including cutting).

Specifications subject to change

P8570D vs Competition Print Speeds

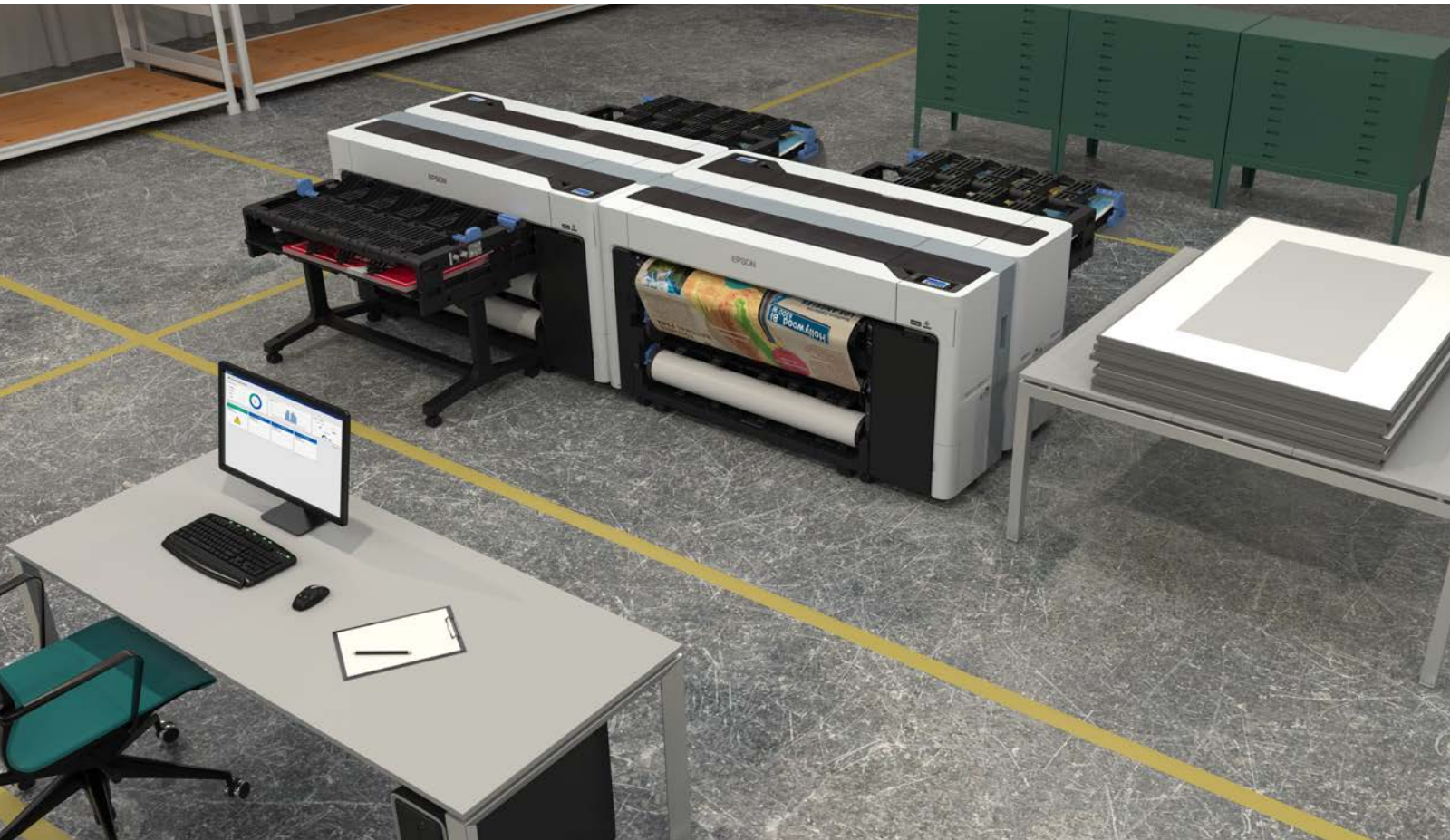


*Throughput is preliminary and will be updated by release date. Values calculated based on B0+ Media, print data: bike image. Photo Paper. Time: from first pass to end of last pass (not including cutting).

Specifications subject to change

Compact Design and Full Front Operation

**Professional
Imaging**



Thin, Flat Back Design

- Ergonomic slim profile
- Place printer against wall or each other
- Depth is only 19.6 in.
- Flat Top can be used as small workspace
- Key operations from front of printer
- 25% Smaller than P8000
- 26% Smaller than HP Z6
- 24% smaller than Canon PRO-4100s
- Smallest footprint in its class¹

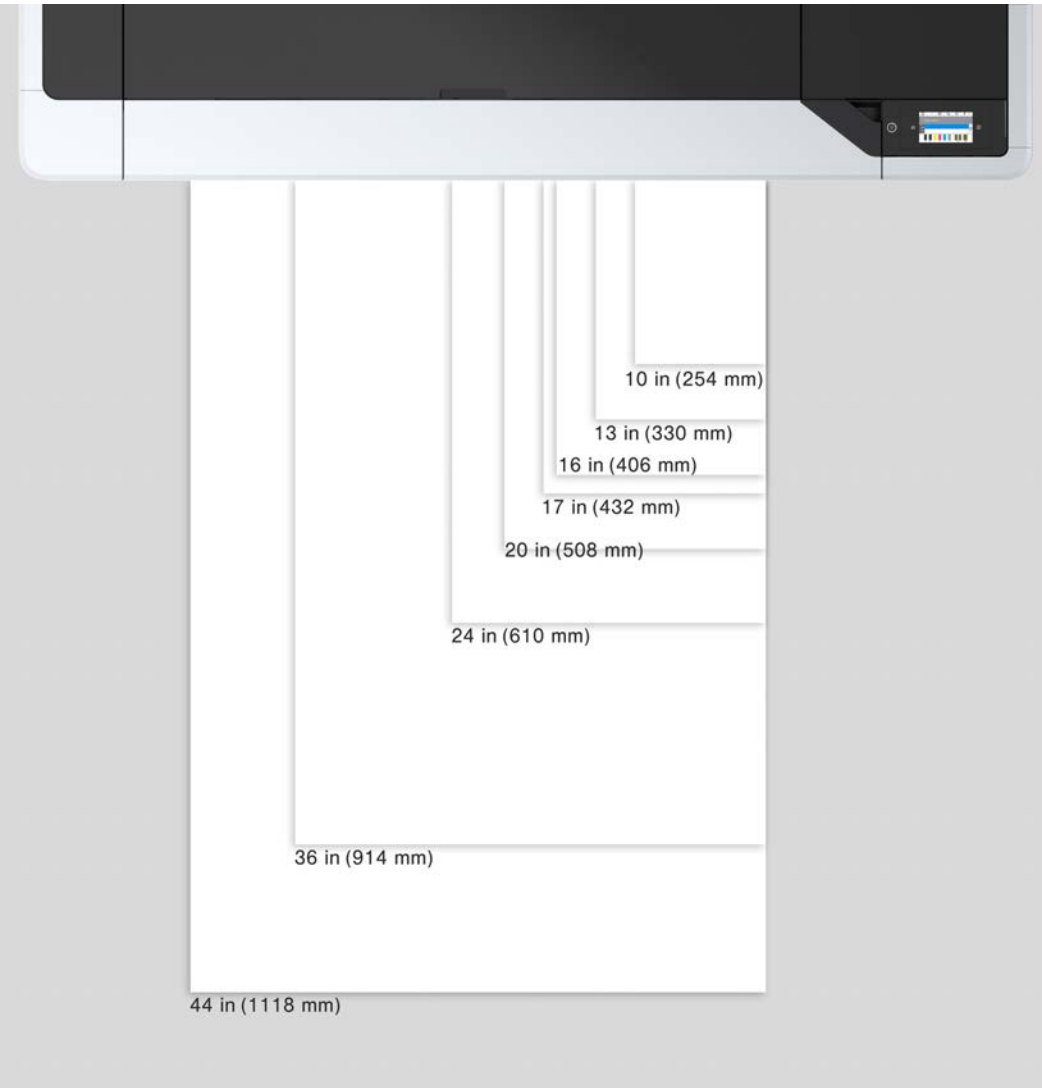
New Dual Roll with Simple Automatic Roll Loading

- Auto Load and Auto Switch
- Roll 1 can be used as Take Up Roll
- Load two media types, sizes, or backup rolls
- Load Sheet and Rigid Posterboard up to 1.5 mm



Advanced Media Handling

Professional
Imaging



Roll Media

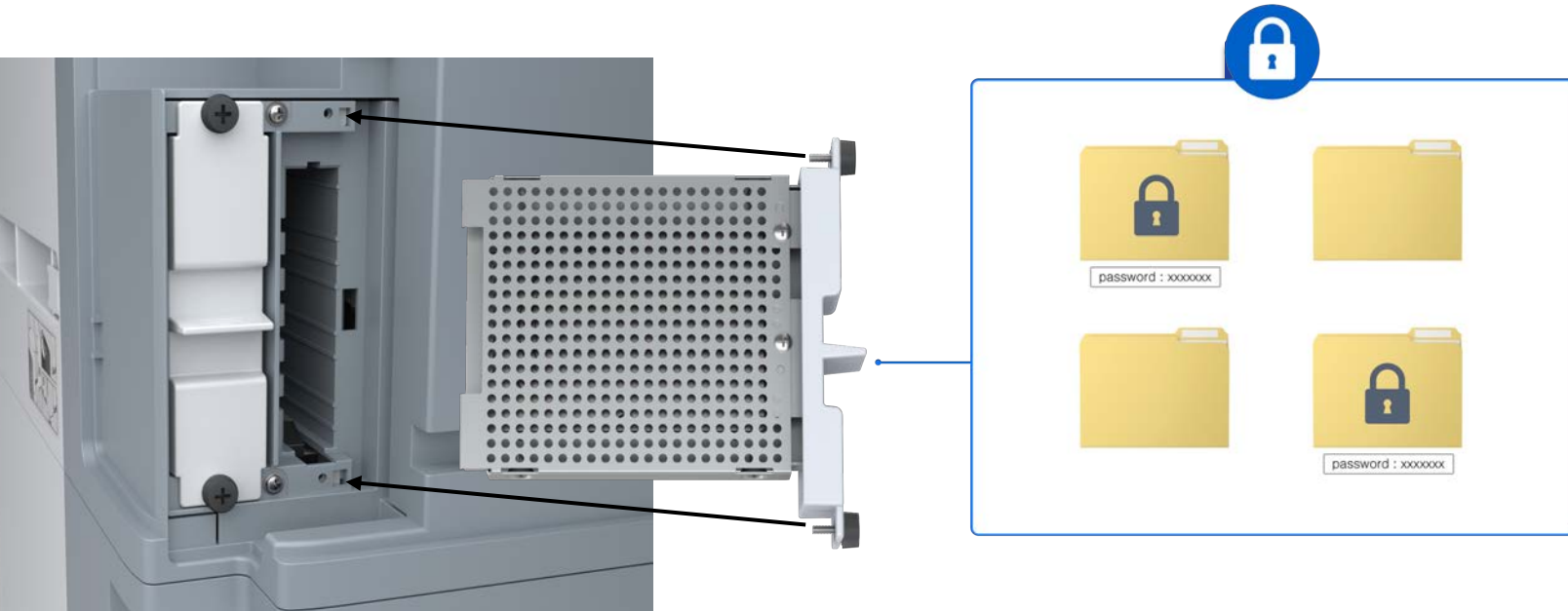
- Roll Media ID and Length Tracking
- BorderFree® Printing (10", 13", 16", 17", ^{New} 20", 24", 36", 44")
- Built-in Automatic Rotary Cutter (Replaceable)
- 6.7" Roll Max Diameter. 10" Wide Minimum width
- 2" & 3" Cores
- Selectable Inner Winding <-> Outer Winding
- Selectable Wind Tension (Low / Mid / High)

Fine Art / Photo Media, Canvas, and Rigid Posterboard

- Epson Professional & Signature Worthy
- Epson Legacy
- Rigid posterboard up to 1.5mm thick

Expandable Options

**Professional
Imaging**



- **Internal Print Server**
 - enables stored jobs to print from SSD freeing up network
- **Computer Free**
 - enables reprints of jobs directly from the printer control panel or web
- **Security**
 - Encrypted AES-256 SSD data cannot be read from another computer or printer (key is protected by TPM security chip)
- **Folder and File Management**
 - Create and password protect folders and files
- **126 GB Virtual Memory**

Self Encrypting Solid State Drive (960 GB)



Expandable Options

Professional
Imaging



Production Print Stacker*

- Available in 24" and 44" Versions
- Adjustable for multiple print lengths
- See through design to monitor progress
- Supports sizes 8.5 x 11" up to 33.1" x 46.8"
- Easily detached and foldable for storage

*Prototype version shown, actual shipping version will vary

Operation and Connectivity Features

Professional
Imaging



User Friendly Operation

- Customizable 4.3" front panel touchscreen LCD
- Web browser accessible with IT security

Simplified Maintenance

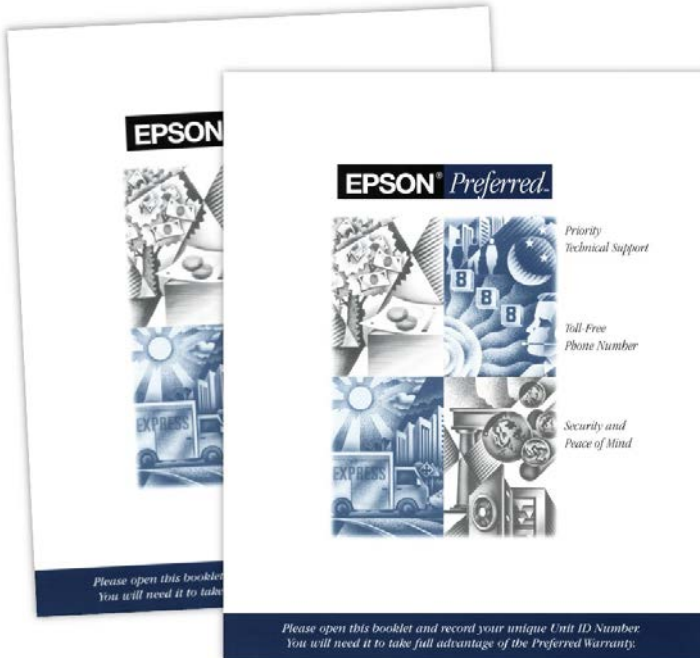
- NVT (Nozzle Verification Technology)
- User accessible print head maintenance

Connectivity and File Management

- 2.4 GHz and 5 GHz Wireless, HighSpeed USB 3.0, Gigabit Ethernet
- Print from mobile devices and USB thumb drive

Limited Warranty and Extended Service Programs

**Professional
Imaging**



Standard 1-Year Epson PreferredSM Limited Warranty

- On-site, usually next business day service, or, whole unit exchange coverage
- Included technical support by phone, business hours Monday thru Friday
- Covers the printer and genuine Epson optional accessories

Optional Epson Preferred Plus Premium Service and Support Plans for Coverage up to a maximum 5 Years²

- Extended service plan coverage after the standard limited in-box warranty ends
- Can be purchased at any time while still under an Epson Preferred Limited Warranty, or while covered under an Extended Service Plan.
- Provides up to total of 5-years of continuous coverage from Epson

1-Year “Stackable” Extended Service Plan: EPPP8570DS1

Consumables and Accessories

**Professional
Imaging**



- Consumables
 - Inks
 - Borderless Maintenance Tanks
 - Maintenance Tank
 - Rotary Cutter Assembly
 - Cleaning Swabs
- Accessories
 - 24" or 44" Print Stacker
 - 960 Gb SSD
 - Adobe Embedded Print Engine
 - Standard in P8570D, P8570DL, P6570D
 - Optional in P6570E, P6570DE
 - Additional Spindle

Specifications are Subject to Change Without Notice

1. 44" Aqueous Pigment Ink Large Format Printers under \$10,000 USD as of end of Oct 2021
2. Limitations apply. Availability of coverage length availability depends on model. See www.Epson.com/support for details.

Epson, MicroPiezo, PrecisionCore, PrecisionDot, UltraChrome, SpectroProofer, SureColor and MicroTFP are trademarks or registered trademarks, Epson Preferred is a service mark, and EPSON Exceed Your Vision is a registered logo mark of Seiko Epson Corp.

All other product brand names are trademarks and/or registered trademarks of their respective companies.
Epson disclaims any and all rights to these trademarks.

© Epson America, Inc. 2021 MA August 2022 / v1.4

Appendix

Security Features

Category		P8500D T7700D	P8000	T7200	Description
Security Standard	ISO 15408				*WF-C21000/LX-10050 series support and this is the only difference
	FIPS 140				
	Firmware update Enable/Disable option				Setting to allow firmware update
	TPM (Trusted Platform Module)	Y			
	BIOS security validation (when power on)	Y			When power on, printer checks BIOS falsification
	Secured BIOS	Y			Use secured BIOS when program falsification is detected
	Firmware/Software code validation (when power on)	Y			When power on, printer checks firmware/software falsification
	Run-time memory validation (during power on/working)				Printer checks all codes during power on/working to avoid a malicious program falsification.
	Re-start / Self-recovery				When printer detects malicious program falsification, printer re-start automatically to recover.
	Security Event Log	Y			Logged security events (only administrator can access)
	SIEM (Security Information and Event Management)				Central management of security log for devices and servers using Syslog.
	Firmware Digital Signature	Y			During firmware update, printer verifies the firmware using a digital signature
Data Protection	Protect system files and directories	Y	Y	Y	
	Encrypted SSD	Y			Saved data in SSD is secured using encrypted SSD.
	Secure file deletion				Secure file deletion in HDD after Scan to Folder etc.
	Secure storage deletion	Y	Y	Y	The device completely erases all data in it at the delete operation by user.
	Encrypted email (=S/MIME email)				The email generated by "Scan to Email" is encrypted.
	SMTP server	Y			Encrypted communication channel for email by SMTP

Security Features

Professional
Imaging

Category		P8500D T7700D	P8000	T7200	Description
Secure Communication	Network anomaly behavior detection				Printer is monitoring anomalous communication at the packet level.
	"802.1x network authentication (IEEE 802.1x)"	Y	Y	Y	Authentication when device is connected
	SNMPv3	Y	Y	Y	Encrypted device communication (use for printer status, ink level etc.) by SNMPv3
	TLS 1.1/1.2	Y	Y	Y	Encrypted device communication (use for printer settings) by TLS 1.1/1.2
	IPP printing	Y			Encrypted communication channel by supporting IPP standard
	IPSec	Y		Y	Encrypted communication channel by supporting IPsec standard
	Encrypted print job/data				IPP is one of idea if customer using LAN connection.
	CA certificate	Y	Y	Y	CA certification for secure features for SSL/TLS, IPsec, 802.1x. etc.
	Device identity certificate	Y	Y	Y	Device identity certification for secure features for SSL/TLS, IPsec, 802.1x. etc.
	Enable/Disable Network port	Y	Y	Y	
	Enable/Disable USB port	Y			
Device Access Control	Single PIN/Password	Y			Device unlocked by PIN/Password (=simple device lock/unlock)
	Multiple PINs/Passwords	Y			Device unlocked by PIN/Password and menu access level is able to configure by PIN/Password
	Access Control by administrator password	Y	Y	Y	Only administrator is able to access to specific menu.
	Encrypted PINS/Passwords	Y			
	ACL (Access Control Lists)	Y			Only registered user can use device(s)
	Active Directory	Y			User information is managed using Active Directory
	LDAP	Y			User information is managed using LDAP
	Wi-Fi Direct	Y			Able to print using Wi-Fi Direct.
	NFC support				NFC(Near Field Communication) to communicate with mobile.
	iBeacon (Bluetooth Low Energy)	Y			

Product Codes

**Professional
Imaging**

SureColor P8570D	SCP8570DR
-------------------------	-----------

SSD Unit	Adobe Embedded Print Engine	Production Stacker (44")	Roll Feed Spindle (44")
C12C936671	C12C936151	C12C937131	C12C936171

Ink Size (ml)	Color	Product Code
700	PK	T48L1
	C	T48L2
	M	T48L3
	Y	T48L4
	MK	T48L8
	GY	T48LE
350	PK	T48S1
	C	T48S2
	M	T48S3
	Y	T48S4
	MK	T48S8
	GY	T48SE
110	PK	T49A1
	C	T49A2
	M	T49A3
	Y	T49A4
	MK	T49A8
	GY	T49AE



*Shown with prototype stacker.
Actual stacker available fall 2022*