



Epson SureColor G6030 DTFilm

- Fast and flexible direct-to-film (DTFilm) printer
- Efficient operation with single and dual layer output
- 1.6 L ink packs for cost-effective production with minimal waste & mess
- Consistent quality with low power consumption & minimum maintenance
- Continuous white ink recirculation, self-cleaning printhead & capping systems
- Epson UltraChrome DF ink for crisp and bright images with a low tack finish, high stretchability and good wash/UV durability
- Output cut sheets or use with a powder applicator/oven for roll-to-roll production
- Supplied with Epson Edge Print PRO RIP software
- Epson Cloud Solution PORT for enhanced costing, management, service & support
- Standard 3-year product warranty

SureColor G6030 DTFilm

Product Specifications

PRINTING TECHNOLOGY

Printhead	Epson 1.33" MicroTFP PrecisionCore
Configuration	8 channels with 2 x 400 nozzles per colour
Maximum resolution	600 x 1200 dpi
Features	Continuous white ink recirculation, ink-less nozzle status monitoring, advanced head cleaning & cap cleaning systems

INK SYSTEM

Ink type	Epson UltraChrome DF
Supply system	Bulk supply with 1.6 L bags
Configuration	CYMK + White + Maintenance Liquid

PERFORMANCE²

Single layer	4.3 ~ 32.6 m ² /hr (White or Colour)
Dual layer	1.9 ~ 17 m ² /hr (White + Colour)

MEDIA SUPPORT

Single film roll	254 ~ 900 mm wide, 150 mm max diameter, 3" core, 10 kg max weight
Thickness	0.08 ~ 0.5 mm
Minimum borders	3 mm left & right, 5 mm top & bottom
Handling	Spindle-less front loading, integrated output cutter with auto hold & manual release

OPERATION

Control panel	4.3" colour touchscreen
Utility software	Epson Setup Navi & Cloud Solution PORT
Application software	Epson Edge Print PRO (Win 64-bit)
Interface	100/1000 Base-T Ethernet (recommended) & USB
Memory	1 GB
Power consumption	65 W Operating, 30 W Ready, 6 W Sleep
Operational space (WxD)	3.9 m ² (2.11 x 1.83 m recommended) ³

ENVIRONMENTAL

Operational temp	10 ~ 35°C (20 ~ 25°C recommended)
Operational humidity	20 ~ 80% (no condensation, 40 ~ 60% recommended)
Power supply	240 V, 1.6 A, 50 Hz - 60 Hz

PHYSICAL

Printer (WxHxD)	1.6 x 0.7 x 1.1 m, 129 kg (no ink)
Printer shipping carton (WxHxD) ⁴	2.0 x 0.8 x 1.2 m, 179 kg

PURCHASE CONFIGURATIONS¹

C11CL77403	Printer with standard 3-year warranty
------------	---------------------------------------

OPTIONAL ACCESSORIES

B41CK17403	SD-10 Spectrophotometer
B42B900311	Auto Table for SD-10

CONSUMABLES

C13T57X190	1.6 L Black Ink Pack
C13T57X290	1.6 L Cyan Ink Pack
C13T57X390	1.6 L Magenta Ink Pack
C13T57X490	1.6 L Yellow Ink Pack
C13T57XA90	1.6 L White Ink Pack
C13T57XB90	1.6 L Maintenance Liquid Pack
C13T57Y100	1.6 L Cleaning Liquid Pack
C13T736200	Maintenance kit
C13S400262	Head cleaning set
C13S902006	Replacement auto cutter blade
C13T724000	Replacement reusable waste tank

WHAT'S IN THE BOX⁴

Printer, stand, roll adapter set, power cord, 1 x set ink/maintenance liquid bags, waste tank, maintenance kit, set up guide, user manual and software (web download).

¹ 3-year standard warranty for non-consumable components, including printheads, using the genuine Epson UltraChrome DF ink. CoverPlus is conditional on activation of Epson Cloud Solution PORT.

² Figures are print speeds achievable with 900 mm film. Speeds will vary depending on the film width and print mode setting. Production times will depend on additional factors including image processing, powder application, melting and pressing.

³ Additional space will be required if operated with a powder applicator/oven.

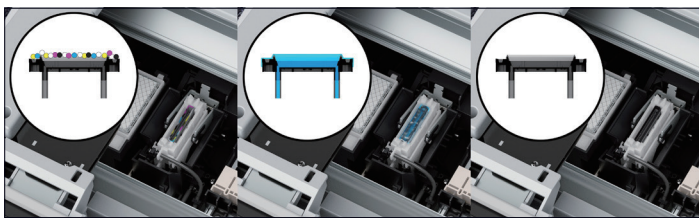
⁴ Ink is shipped separately to the printer. The DTF process requires powder to be subsequently applied and melted in an oven. A heat press will be required for subsequent transfer onto garments and merchandise.



Touch panel control



Fabric-based head wiper



Advanced cap cleaning

ULTRACHROME
DF INK



ECO
PASSPORT
NEP 1603
Nissenken
www.oeko-tex.com



Epson Cloud Solution PORT

EPSON INDIA PVT. LTD.

11th Floor, Godrej Centre - Hebbal, Sy. No. 26, Bellary Road, Sahakar Nagar, Byatarayanapura, Bangalore - 560 008. Tel: 080-4566 5000 Fax: 080-4566 5005

Scan the QR code to contact an Epson representative close to you.



CONTACT EPSON TODAY! EMAIL: vasu@eid.epson.co.in



Epson Helpline: For product info or service - 1800 425 0011
For service: 1800 123 001 600 or 1860 3000 1600 (9 am - 6 pm) (Mon - Sat)
Email: lf@epson-india.in
www.epson.co.in