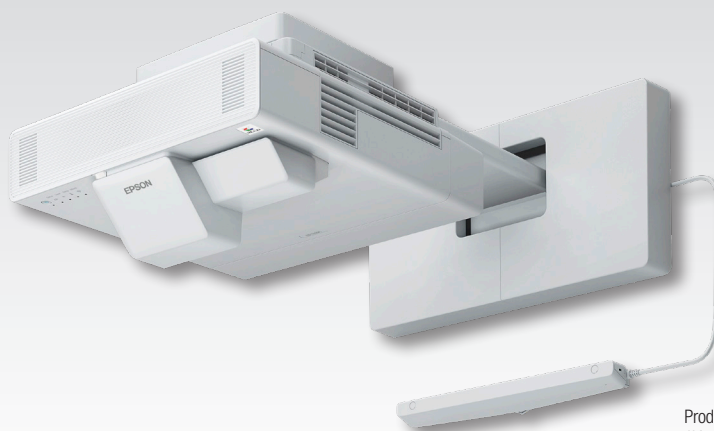


# BrightLink® 1485Fi 1080p 3LCD Interactive Laser Display



Product shown with mount, sold separately.

Bring collaboration to classrooms and meeting spaces with this interactive HD 1080p laser display<sup>1</sup>.

**Super bright** — 5,000 lumens color/white brightness<sup>2</sup>; 1080p Full HD laser display<sup>1</sup>

**Flexible image sizes** — projects large, 100", 16:9 or super-wide 120", 16:6 images — up to 95 percent more interactive space vs. a 75" flat panel

**Solid-state laser light source** — virtually maintenance-free 20,000-hour laser light source with no lamps<sup>3</sup>

**Easy installation** — automatic image adjustment and simplified calibration makes installation easier than ever before

**Digital whiteboard** — draw, save, print and email without a PC; share whiteboard content to other network-connected BrightLink projectors<sup>4</sup>

**Easy operation** — touch and pen-enabled interactivity<sup>5</sup> allows up to eight users to collaborate at once

**Improved cable management** — HDBaseT control pad supports, video, audio and interactive functions, reducing the number of cables and making installation a snap<sup>6</sup>

**Built-in wireless** — use free Epson® iProjection™ software to connect, display and share content simultaneously to/from up to 50 connected devices<sup>7</sup>

**Connect with Miracast®** — supports software-free, peer-to-peer wireless connectivity

**SMART Learning Suite** — includes 1-year subscription and support for SMART Notebook®, SMART amp™, SMART lab™, SMART Learning Suite Online and more



## Specifications

**Display System** Epson 3LCD, 3-chip technology  
**Display Method** Ceiling/wall mount/table mount  
**Driving Method** Epson Poly-silicon TFT Active Matrix  
**Pixel Number** 1,049,088 (1366 x 720) x 3  
**Color Brightness<sup>2</sup>** Color Light Output: 5,000 lumens  
**White Brightness<sup>2</sup>** White Light Output: 5,000 lumens  
**Aspect Ratio** 16:9 (native), supports 4:3, 16:10, 16:6, 21:9  
**Native Resolution** 1080p<sup>1</sup> (1366 x 720 x 2)  
**Size (Projected Distance) Area** (16:9) 65" – 100"  
**Keystone Correction (Manual)**  
 Horizontal: ± 3 degrees  
 Vertical: ± 3 degrees  
**USB Plug 'n Play<sup>®</sup>** Mac® 10.7 or later; Windows Vista® or later  
**Contrast Ratio** Up to 2,500,000:1  
**Color Reproduction** Up to 1.07 billion colors  
**Illumination Technology** Laser Diode  
**Light Source Life<sup>3</sup>** 20,000 hours (Normal)  
 30,000 hours (Extended)

## Wireless Specifications

**Supported Security Mode**  
 OPEN, WPA2/WPA3-PSK, WPA2/WPA3-EAP  
**Supported EAP Type:** PEAP, PEAP-TLS, EAP-TLS, EAP-Fast  
**Supported Speeds**  
 IEEE 802.11b: 11 Mbps\* (2.4 GHz)  
 IEEE 802.11g: 54 Mbps\* (2.4 GHz)  
 IEEE 802.11n: 72.2 Mbps\* (2.4 GHz)  
 IEEE 802.11a: 54 Mbps\* (5 GHz)  
 IEEE 802.11n: 150 Mbps\* (5 GHz)  
 IEEE 802.11ac: 325 Mbps\* (5 GHz)  
 \*Maximum speed and range is achievable when used with the same Enhanced Mode technology. Actual data rates, features and performance may vary depending on your computer system, the environment and other factors.

## Projection Lens

**Type** Manual focus  
**F-number** 1.50  
**Focal Length** 3.9 mm  
**Throw Ratio Range** (16:9) 0.27 – 0.37, (4:3) 0.37 – 0.50, (16:10) 0.30 – 0.42  
**Zoom Ratio** Digital zoom 1.0 – 1.35x

## Other

**Speaker** 8 W x 2 stereo  
**Operating Temperature** 41° to 104 °F (0° to 40 °C)  
**Power Supply Voltage** 100 – 240 V ± 10%, 50/60 Hz  
**Power Consumption**  
 ECO Mode: 270 W  
 Normal Mode: 381 W  
 Standby (Communication On): 2.0 W  
 Standby (Communication Off): 0.5 W  
**Fan Noise**  
 Quiet Mode: 27 dB, Normal Mode: 36 dB  
**Security** Kensington lock provision, security anchor bar, password-protect function

## Interfaces

HDMI®: 3  
 HDBaseT HDMI out: DS 1  
 Computer/Component Video: 2x D-sub 15 pin  
 Composite Video: 1x RCA (Yellow)  
 Audio In: 3x Mini stereo  
 Audio Out: 1x Mini stereo  
 Microphone in: 1  
 USB Connector: 2x Type B (USB display, audio and mouse, k/b control interactivity)  
 USB Connector: 2x Type A (USB memory/document camera)

## Interactivity

**Interactive Technology** Infrared, 850 nm  
**Interactive Area (Image Size)** 65" – 100" diagonal (16:9, 1080p)  
**Input Device** Digital pen or finger  
**Number of Pens** Two  
**Number of Pen Tips** Six (4x Felt/Soft Tip, 2x Teflon™ Hard Tip)  
**Pen Functions** Mouse functions (left and right click), Electronic pen, LED battery status indicator  
**Pen Specifications** Size: 6.3" (L) x 0.95" (W); Weight: 1.1 oz (without battery), Power: AA battery, Compatible Battery Types: AA x 1, Manganese dry cell, Alkaline dry cell, Panasonic eneloop® BK-3MCCx (The suffix "x" can be blank or A-Z), Calibration Method: Automatic or Manual  
**Interactive Modes**  
 Whiteboard Mode: 2x pens and 6x fingers, PC-free Annotation Mode: 2x pens and 6x fingers, Computer Interactivity Mode, Easy Interactive Tools: 2x pens and 6x fingers  
**Requirements for Computer Interactivity**  
 Connection to the Computer: Via USB cable or wired/wireless LAN  
 Software System Compatibility: Epson Easy Interactive Driver for Mac® only; Windows® driver for Multi Projection; Windows (single projector) and Linux: No driver required  
 Mac: Mac OS X® 10.7.x or later  
**Interactive Software Requirements** Epson Easy Interactive Driver (Mac and PC — required for DuoLink); Windows and Linux: driver not required Mac: Mac OS X 10.7/10.8/10.9/10.10/10.11/macOS 10.12.x Epson Easy Interactive Tools for Windows and Mac  
**System Compatibility** Microsoft® Windows Vista® SP2 (All editions except for Starter), Windows 8/8.1, Windows 10, Windows 7 SP1 (All editions except for Starter) macOS 10.7/10.8/10.9/10.10/10.11/macOS 10.12.x, UBUNTU 15.10, 16.04 LTS, 16.04, 18.04, 19.04

## Dimensions (W x D x H)

**Including Feet** 18.1" x 14.3" x 8.3"  
**Weight** 21.4 lbs with cable cover (9.7 kg)

## Remote Control

**Features** Source search, HDMI, Computer, LAN, USB, Power, Aspect, Color mode, Volume, E-zoom, A/V Mute, Freeze, Menu, Home, Auto, Enter, Esc, Pointer, User, Pen Mode, Split, Home, ID  
**Operating Angle**  
 Rear: Right/left: -55 to +55 degrees, Upper/lower: +75 to +15 degrees Front: Right/left: -30 to +30 degrees, Upper/lower: 0 to +60 degrees  
**Operating Distance** 19.7 ft (6 m)

1x RJ-45  
 Serial: 1x RS-232c  
 Monitor Out/Computer: 1x D-sub 15 pin  
 Integrated Wireless LAN:  
 802.11 b/g/n/ac  
 Interactive Synchronization Mini stereo In  
 Interactive Synchronization Mini stereo Out  
 Touch Unit Connection Port

## HDBaseT Control Box

**Functions** Projector On/Off, HDMI source switching, audio/video/interactivity via CAT6, USB for PC-free saving  
**Dimensions** 7.75" H x 6.9" W x 1.5" D  
**Power** DC 12 V power supply  
**Supported Distance** 40m (4k 30fps) or 70m (1080p 60fps) via CAT6 cable

## Eco Features

Energy-efficient 3LCD light engine  
 RoHS compliant  
 Recyclable product<sup>4</sup>  
 Epson America, Inc. is a SmartWay® Transport Partner<sup>5</sup>

## Support

**Service Programs** Two-year projector limited warranty, Epson Road Service program, PrivateLine® dedicated toll-free support

## What's in the Box

BrightLink Pro 1485Fi, lens cover, rear cable cover, interactive touch module and cable, Quick Setup Guide, 6' power cable, USB A/B cable (x1), projector remote control with two AA batteries, HDBaseT control pad with power supply, pen holder, four (4) markers for auto screen adjustment, IR reflectors, two (2) interactive pens, battery charger and two (2) AA rechargeable batteries (for interactive pens), Warranty statement, SMART SLS redemption code

## Ordering Information

BrightLink 1485Fi	V11H919520
Air Filter	V13H134A56
PowerLite® Pilot™ 3 (ELPCB03)	V12H927020
Pixie Plus (ELPSP10)	
Document Camera (DC21)	V12H758020
External Speakers (ELPSP02)	V12H467020
Wireless 802.11b/g/n LAN Unit (ELPAP11)	V12H005A02
100" Whiteboard 16:9 Aspect Ratio	V12H006A02
DaLite 100" IDEA Screen	V12H006A01
Interactive Pen A (Orange)	V12H773010
Interactive Pen B (Blue)	V12H774010
Replacement Pen Tips (Hard/Teflon)	V12H775010
Replacement Pen Tips (Soft/Felt)	V12H776020
Ultra Short-throw Wall Mount (ELPMB62)	V12HA06A05
Finger Touch Module	V12H007A23
Touch Module Bracket	V12HA05A09
USB Extension Cable (ELPKC31)	V12H525001

<sup>1</sup> Pixel shifting technology achieves Full HD resolution on screen. | <sup>2</sup> Color brightness (color light output) and white brightness (white light output) will vary depending on usage conditions. Color light output measured in accordance with IDMS 15.4; white light output measured in accordance with ISO 21118. | <sup>3</sup> No required maintenance for the light source for up to 20,000 hours. Approximate time until brightness decreases 50% from first usage. Measured by acceleration test assuming use of 0.04 - 0.20 mg/m³ of particulate matter. Time varies depending on usage conditions and environment. Replacement of parts other than the light source may be required in a shorter period. | <sup>4</sup> BL1485Fi and 1480Fi projectors only. Cannot share to earlier models. | <sup>5</sup> Requires Windows 7, Windows 8 or Mac OS X or later to recognize finger gestures. | <sup>6</sup> Supports maximum distance up to 229 feet (Cat6A/7; 1080p) and up to 131 feet (Cat6A/7; 4K content) | <sup>7</sup> For wireless functionality, including via the Epson iProjection App, the projector must be configured on a network, either through the Ethernet port on the projector (check model specifications for availability) or via a wireless connection. Check your owner's manual to determine if a wireless LAN module must be purchased separately to enable a wireless connection. Not all Epson projectors are able to be networked. The Epson iProjection App does not support all files and formats. See [www.epson.com](http://www.epson.com) for details. | <sup>8</sup> For convenient and reasonable recycling options, visit [www.epson.com/recycle](http://www.epson.com/recycle) | <sup>9</sup> SmartWay is an innovative partnership of the U.S. Environmental Protection Agency that reduces greenhouse gases and other air pollutants and improves fuel efficiency.

Learn more about how our products can empower your institution. Visit us at [www.epson.com/foreducation](http://www.epson.com/foreducation)

**Better Products for a Better Future™**  
[eco.epson.com](http://eco.epson.com)



**Epson America, Inc.**  
 3840 Kilroy Airport Way, Long Beach, CA 90806

**Epson Canada Limited**  
 185 Renfrew Drive, Markham, Ontario L3R 6G3

**www.epson.com**  
**www.epson.ca**

EPSON and PowerLite are registered trademarks, EPSON Exceed Your Vision is a registered logomark and Better Products for a Better Future and Epson iProjection are trademarks of Seiko Epson Corporation. BrightLink and PrivateLine are registered trademarks and Pilot is a trademark of Epson America, Inc. Miracast® is a registered trademark of Wi-Fi Alliance®. Mac, macOS and OS X are trademarks of Apple Inc., registered in the U.S. and other countries. Windows, Windows Vista and Microsoft are registered trademarks or trademarks of Microsoft Corporation in the United States and/or other countries. All other product and brand names are trademarks and/or registered trademarks of their respective companies. Epson disclaims any and all rights in these marks. Copyright 2019 Epson America, Inc. CPD-58164 10/19