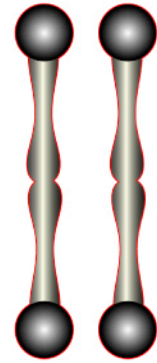
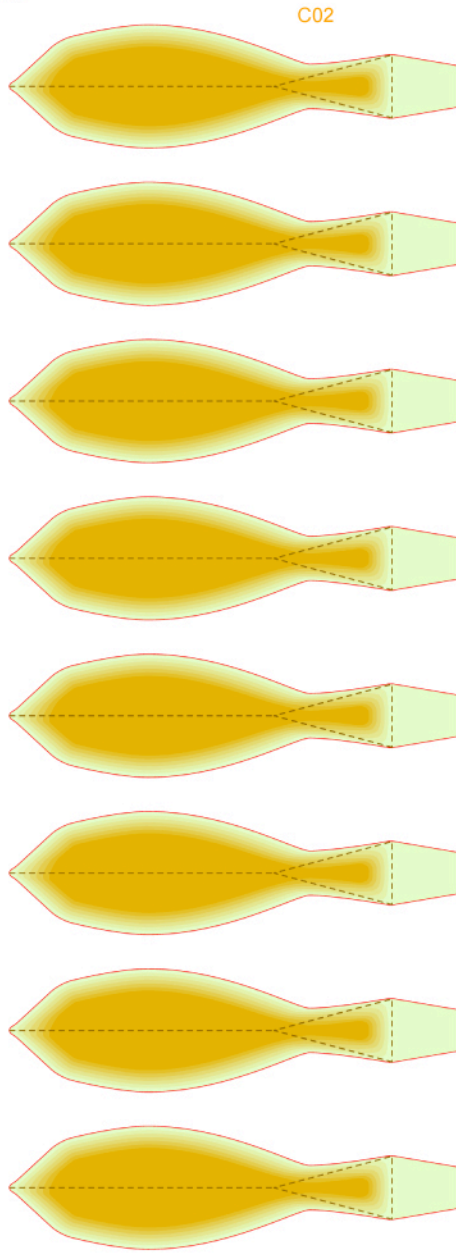
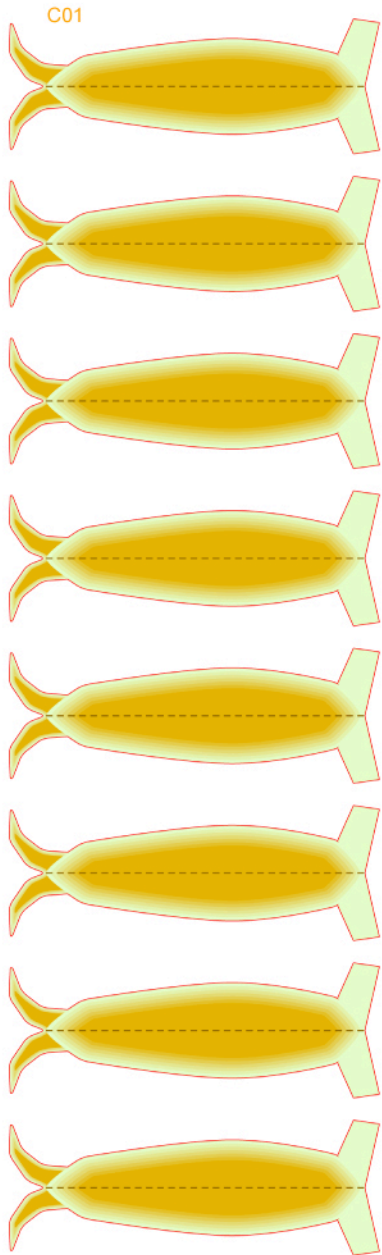


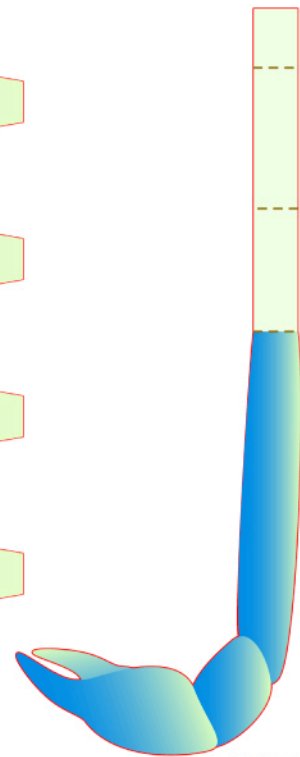


腳

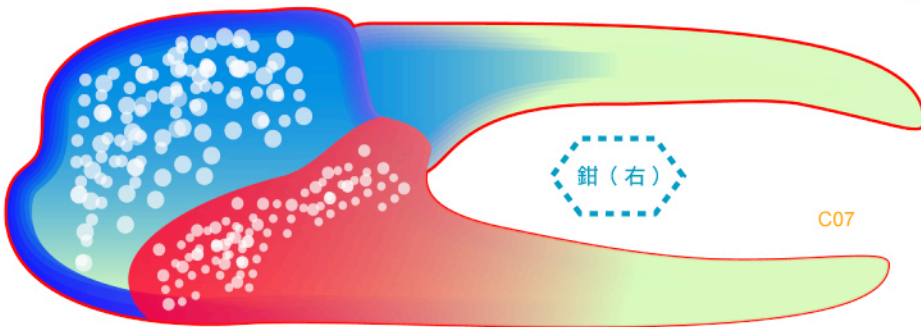


C03

眼



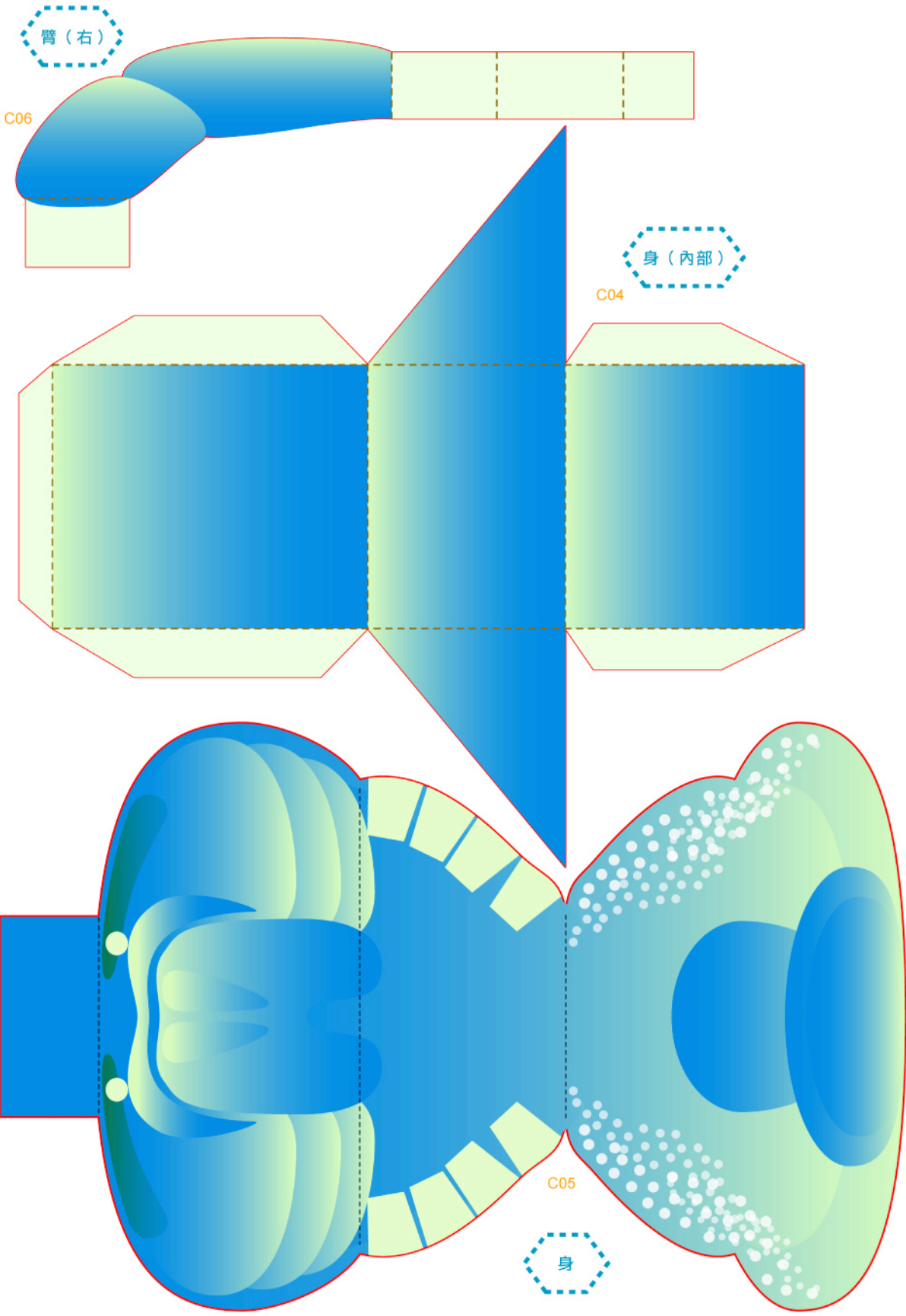
C08



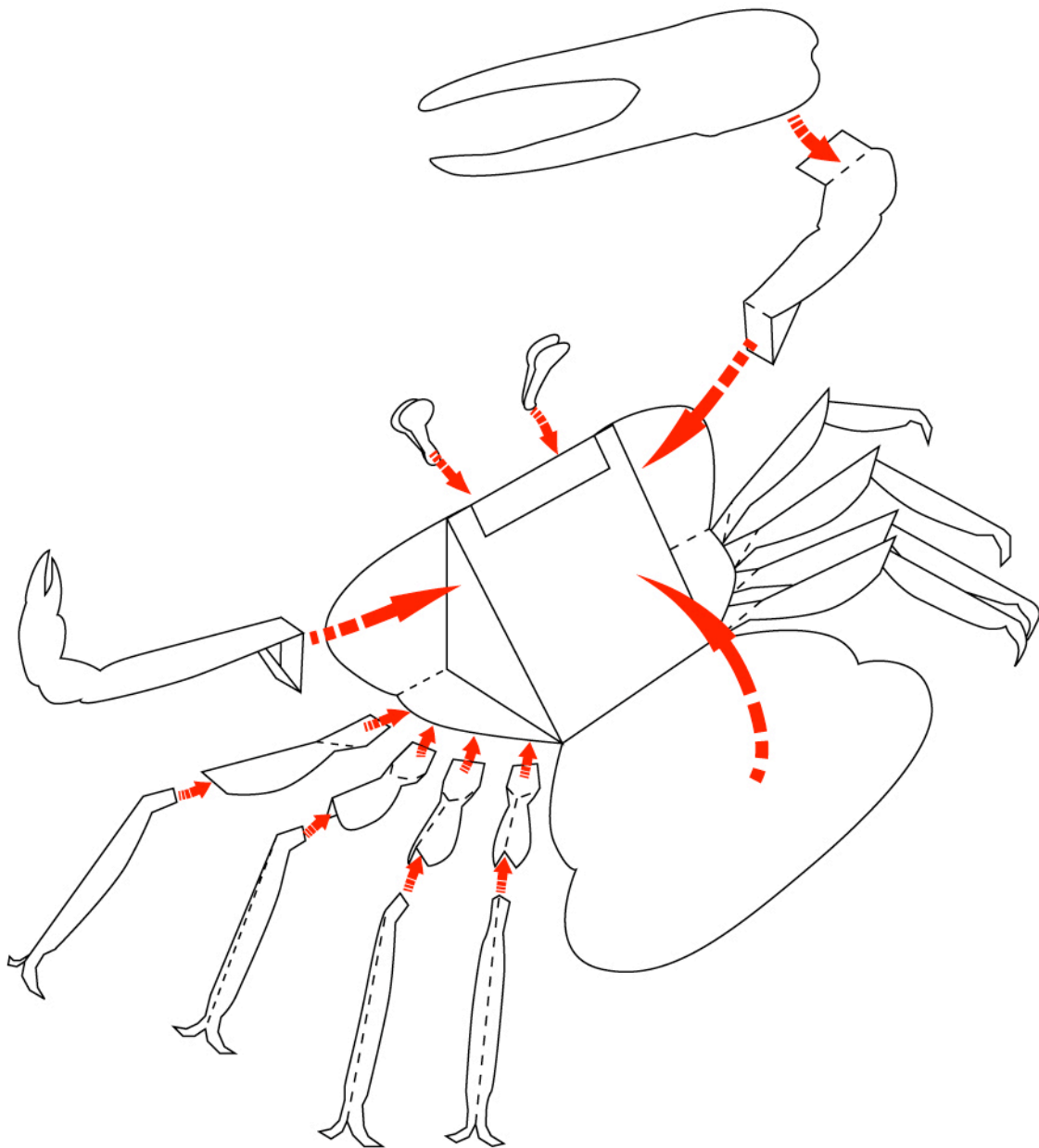
鉗 (右)

C07

臂 (左)



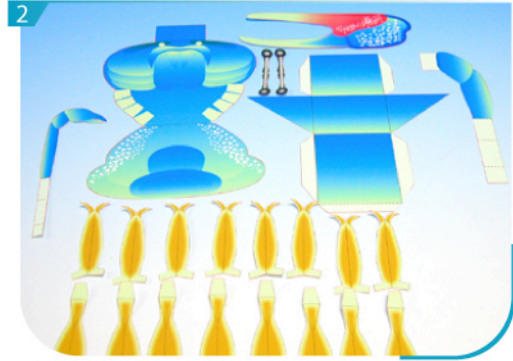
組合說明



基本步驟

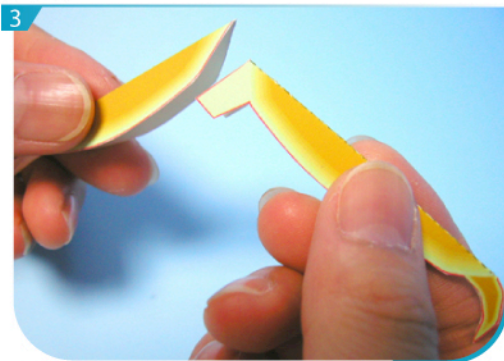


1 用沒有墨水的原子筆或鐵筆劃一下摺線。

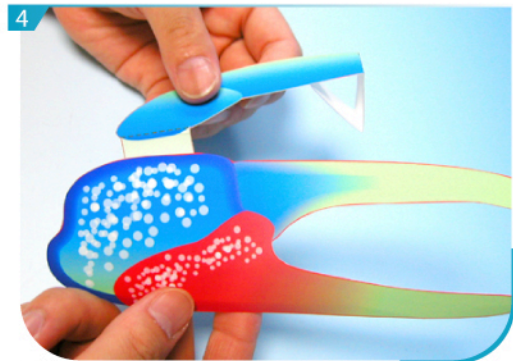


2 沿線剪出所有組件。為免混淆，可先在組件背面劃上記號。

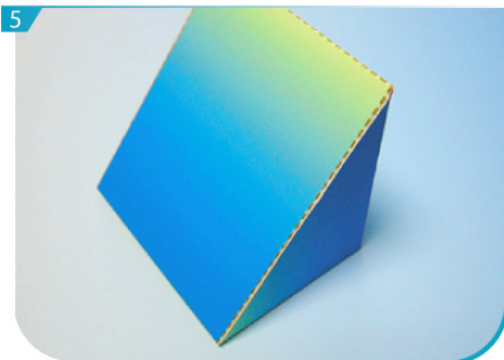
製作步驟



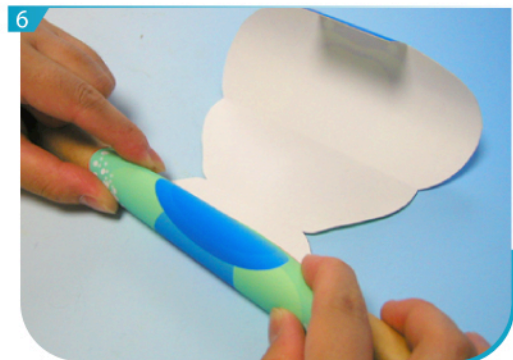
3 將所有C01及C02各自摺疊貼好，做成蟹腳。



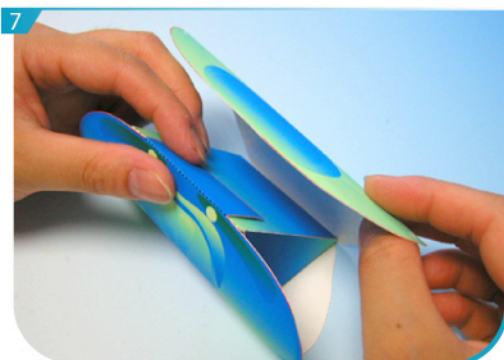
4 將C06及C07按組合說明貼好，做成蟹鉗。



5 將C04摺疊貼好，做成蟹身內部。



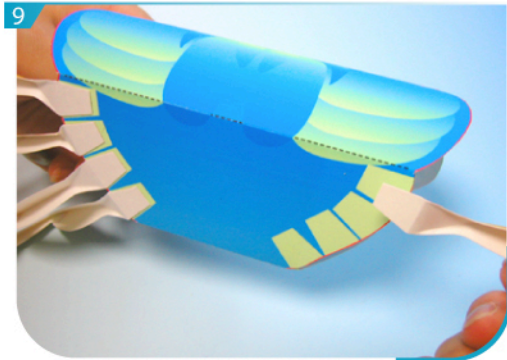
6 用圓柱型的筆把C05先捲一下。



7 將C04及C05按組合說明貼好，做成蟹身。



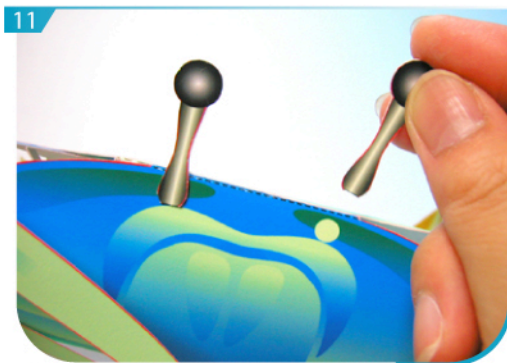
8 將C03的眼部對摺後黏好。



將蟹腳逐一貼於蟹身。



將蟹鉗及C07臂貼於蟹身，可參考組合說明。



最後於預定位置將眼C03貼上，一隻蟹製作完成。