

BUILT TO SUIT YOUR EVOLVING BUSINESS NEEDS.



Enjoy low-cost, durable and reliable printing in high volume with the Epson WorkForce WF-C579R business printer. Deliver fast print speeds at 24 ipm plus a first colour-page-out time of just 5.3 secs. Reduce the need for replacing consumables with high capacity ink packs that help reduce running costs. With a range of printing and connectivity features, this printer is the ideal solution for workgroups that require hassle-free, low-maintenance and high-volume printing.



ISO Print
Speed



Duplex
Printing



Ethernet



Epson
Connect



WiFi
Direct



Open
Platform
Enabled



With option of standard ink packs
or large ink packs.



WorkForce Pro WF-C579R
Print/Scan/Copy/Fax

IT'S IN THE DETAILS.

With PrecisionCore Heat-Free Technology,
Epson WorkForce Pro WF-C579R
excels with speed, quality and reliability.



PrecisionCore Heat-Free Technology

Experience reliability, durability and quality prints that meet the standards of business printing with PrecisionCore Heat-Free Technology.

Innovative Replaceable Ink Pack System

Lower maintenance with high-capacity ink packs from Epson's Replaceable Ink Pack System (RIPS) that yield up to 50,000 pages in black or up to 20,000 pages in colour at low running costs.

Built for the Environment

Extremely low power consumption and less replacement parts compared to laser printers mean a greater positive impact on the environment.

Fast, reliable and cost-efficient, Epson's WorkForce Pro WF-C579R printer delivers outstanding print performance to edge out laser competitors. With an innovative print system and a wide range of connectivity features that allow you to print in high volume, the WF-C579R is the printer for superior productivity, meeting your ever-evolving business needs.

PrecisionCore Heat-Free Printhead Technology



PrecisionCore Heat-Free Technology builds on Epson's longstanding reputation for output quality, at the speeds and reliability required for commercial and industrial printing.

This revolutionary technology enables the WF-C579R to print at blazing print speeds of up to 24 ipm and a first-page-out time of just 5.3 seconds in colour. What's more, each print chip is capable of generating up to 40 million precise dots per second to deliver fast printing speeds and excellent output quality.

With advanced built-in Nozzle Verification Technology, the monitoring of nozzle health and print quality adjustments are done automatically without interruption - even during printing. Productivity is further enhanced with a reliable maximum monthly duty cycle of 50,000 pages.



PrecisionCore Heat-Free Technology Print Chip



Simple, cool, contactless technology



Complex technology using heat and pressure

Innovative Replaceable Ink Pack System

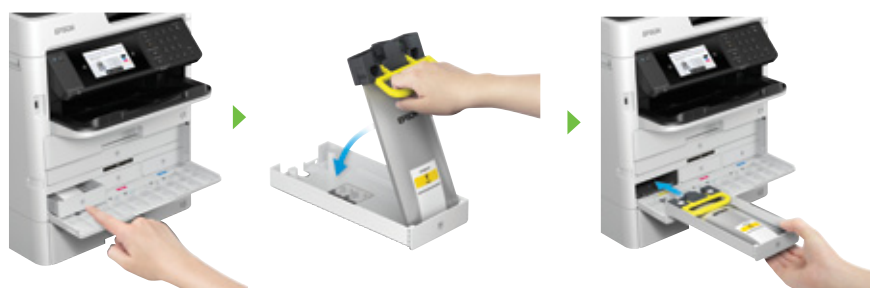
Convenience is of top priority. That's why Epson's Replaceable Ink Pack System (RIPS) is designed for easy, hassle-free ink replacements. With the standard ink packs giving you up to 10,000 pages in black and 5,000 pages in colour, users have the option to purchase high-capacity ink packs that print up to 50,000 pages in black and 20,000 pages in colour. This minimises the downtime needed to replace the inks and enable greater cost savings.

In addition, Epson's DURABrite™ Ultra ink delivers laser-like quality prints that are water, fade and smudge-resistant.



Up to 20,000 pages in colour
Up to 50,000 pages in black

Enjoy greater cost-savings with these high-volume ink packs



Designed for easy replacement of ink packs

Built for the Environment

No Heating, Less Power Consumption and Simple to Use

Unlike laser printers, which require heat to fix toner on paper, inkjet printers do not need heat to operate. They are also fast and simple to use, which substantially reduces power consumption from minimal maintenance and fewer consumables.

Superior Productivity



Automatic Duplex Printing and Scanning

The printer supports automatic duplex printing of up to 15ipm for A4, reducing paper wastage. The one pass duplex ADF unit allows for quick, convenient scanning and copying of double-sided documents.



Versatile Paper Handling

Input paper capacity can be upgraded with an additional paper cassette to support up to 1,330 sheets. Papers of different sizes can be placed in the different cassettes for automatic selection. The rear tray enables the use of special media such as photo media.



USB Host Function

The WF-C579R comes with a USB port for direct printing, scanning and saving faxes using USB flash memory devices.



LCD Screen

Experience easy setup and PC-less operation with the 4.3" colour touch screen.

Versatile Connectivity

Network Connectivity and Standalone Capability

Equipped with Ethernet, WiFi, RJ-11 fax, WiFi Direct and USB 2.0, the printer is perfect for office environments. What's more, WiFi Direct acts as an access point, allowing up to four devices to connect directly to the printer at a time.



Epson Connect Enabled

Wirelessly print your documents from anywhere in the world with Epson Connect's wide range of features:

- **Epson iPrint** – Print from and scan directly to your smart device or online cloud storage services.
- **Epson Email Print** – Print to any Email Print-enabled Epson printer from any device or PC with email access.
- **Remote Print Driver** – Print to a compatible Epson printer anywhere in the world via the internet using a PC with Remote Print driver or from mobile devices via the Epson iPrint app.
- **Scan to Cloud** – Share your scans through email or store them online in cloud storage services.

Other mobile solutions:

- **Apple® AirPrint™**
- **Google Cloud Print™**
- **Mopria™ Print Service**

Advanced Workflow Solutions

Get the most out of your printers with an extensive range of software solutions.

Fleet Management



Epson Device Admin

A free software that allows you to control, analyse and manage your printer fleet centrally from one intuitive interface, designed to increase productivity and reduce costs.

Print Management



Epson Print Admin

A server-based solution that creates a secured centralised printing, scanning and copying environment through user-authentication. Advanced reporting functions can help organisations reduce printing costs and run Managed Print Programmes.

Document Management



Document Capture Pro*

Easily scan, view, edit, save and transfer scanned documents. The software optically recognises barcodes, characters and blank pages in scanned documents to separate them into different folders. It allows you to create up to 30 customised job settings, making multiple scan jobs a breeze.

*Document Capture Pro (Windows), Document Capture (Mac OS X)



Document Capture Pro Server

The WF-C579R is compatible with Document Capture Pro Server, making it easy to seamlessly and locally manage documents. Document Capture Pro integrates into document management and cloud storage systems, enabling you to capture, enhance, edit and distribute scanned documents effectively throughout your business.

Integration with Third-party Solutions

Epson Open Platform

Gain complete control of your printing operations via a range of third-party solutions that enable you to adapt the WorkForce Pro printers to meet specific and changing business requirements with solutions for print and document management.

Robust Security Features

Secured Printing with PIN Release

Print confidential documents by setting a PIN to a print job for release on the printer panel.

IP Address Filter

Secure your documents by preventing unauthorised devices from connecting to the printer.

Panel Admin Mode

Set a password to access and change administrator settings for the printer. This prevents unauthorised users from changing the printer settings.

Limited Access Function

Reduce risk of information leaks by limiting the access to functions for up to 10 user accounts.

LDAP Address Book

Prevent information leaks by using the address book registered in the LDAP server to accurately select recipient E-mail addresses.

SPECIFICATIONS

WORKFORCE PRO WF-C579R

EPSON
EXCEED YOUR VISION

| | | |
|---|--|--|
| Model Number | WF-C579R | |
| Printer Type | Print, Scan, Copy, Fax with ADF | |
| Printing | | |
| Printing Technology | PrecisionCore Heat-Free Technology | |
| Nozzle Configuration | 400 x 2 nozzles each colour (Black, Cyan, Magenta, Yellow) | |
| Print Direction | Bi-directional printing, Uni-directional printing | |
| Maximum Resolution | 4800 x 1200 dpi (with Variable-Sized Droplet Technology) | |
| Minimum Ink Droplet Volume | 3.8 pl | |
| Print Speed ^{*1} | | |
| Draft Text - Memo, A4 (Black ^{*1} / Colour ^{*2}) | Up to 34 ppm / 34 ppm | |
| ISO 24734, A4 Simplex (Black / Colour) | Up to 24 ipm / 24 ipm | |
| ISO 24734, A4 Duplex (Black / Colour) | Up to 15 ipm / 15 ipm | |
| Printer Language | ESC/P-R | |
| Emulation | PCL5c, PCL6, Compatible with PostScript Level 3, PDF (ver1.7) | |
| Maximum Monthly Duty Cycle ^{*2} | Up to 50,000 pages | |
| Automatic 2-sided Printing | Yes (up to A4) | |
| Copying | | |
| Copy Speed | | |
| ISO 29183, A4 (Black / Colour, Simplex) | Up to 22 ipm / 22 ipm | |
| ISO 24735, A4 (Black / Colour, 1:1) | Up to 22 ipm / 22 ipm | |
| ISO 24735, A4 (Black / Colour, 1:2, 2:2) | Up to 14 ipm / 14 ipm | |
| Copy Quality | Text, Text & Image, Text & Image (Best), Photo | |
| Maximum Copies from Standalone | 999 copies | |
| Reduction / Enlargement | 25 - 400%, Auto Fit Function | |
| Maximum Copy Resolution | 600 x 1200 dpi | |
| Maximum Copy Size | A4, Letter | |
| Copy Paper Size (Flatbed) | Letter, A4, B5, A5, B6, A6, 16K, 13 x 18 cm, 16:9, 10 x 15 cm, #10, DL, C4, C6 | |
| Scanning | | |
| Scanner Type | Flatbed colour image scanner | |
| Sensor Type | CIS | |
| Optical Resolution | 1200 x 2400 dpi | |
| Maximum Scan Area | 216 x 297 mm (8.5" x 11.7") | |
| Scanner Bit Depth | | |
| Colour | 48-bit input, 24-bit output | |
| Greyscale | 16-bit input, 8-bit output | |
| Black & white | 16-bit input, 1-bit output | |
| Scan Speed (Flatbed / ADF (Simplex) / ADF (Duplex)) | | |
| Monochrome | 5.0 sec / 30 ppm / 60 ipm | |
| Colour | 5.0 sec / 30 ppm / 60 ipm | |
| Fax Function | | |
| Type of Fax | Walk-up Black-and-white and Colour Fax Capability | |
| Receive Memory / Page Memory | 6MB, Up to 550 pages (ITU-T No.1 chart) | |
| Error Correction Mode | ITU Group3 Fax with Error Correction Mode | |
| Fax Speed (Data Transfer Rate) | Up to 33.6 kbps, Approx. 3sec/page | |
| Fax Resolution | Up to 200 x 200 dpi | |
| Transmission Paper Size | | |
| Flatbed | A5, B5 (JIS), Letter, A4 | |
| ADF | Letter, A4, Legal, A5, B5, 8.5" x 13" | |
| Receiving Paper Size | A5, B5 (JIS), Letter, A4, Legal, 8.5" x 13" | |
| Speed Dial / Group Dial | Up to 200 numbers, 199 groups | |
| Fax Features | PC Fax (Transmission / Receive), Address Book, Delay Send, Transmit Reservation (50 case), Broadcast Fax (Mono Only) | |
| ADF Function | | |
| Support Paper Thickness | 64 - 95 g/m ² | |
| Paper Capacity | 50 pages (80 g/m ²) | |
| Card Slot/ USB Host Function | | |
| USB Host | USB Host (Scan to memory device / Storage function) | |
| Type of Direct Printing | USB Memory | |
| Paper Handling | | |
| Paper Feed Method | | |
| Number of Paper Trays | 3 (Front 2, Rear 1) | |
| Paper Hold Capacity | | |
| Input Capacity | Cassette 1: 250 sheets (80 g/m ²), 50 sheets Premium Glossy Photo Paper | |
| Output Capacity | Cassette 2: 500 sheets (80 g/m ²) | |
| Paper Size | Rear Slot: 80 sheets (80 g/m ²) | |
| Maximum Paper Size (Rear Tray) | 150 sheets (80 g/m ²), 20 sheets Premium Glossy Photo Paper | |
| Print Margin | 8.5 x 13", Legal, Letter, A4, Executive, B5, A5, A6, B6, 5 x 7", 16:9 wide, 4 x 6", Envelopes: #10, DL, C6, C4 | |
| Interface | | |
| USB | 215.9 x 6,000 mm (8.5 x 236.2") | |
| Network | 3 mm top, left, right, bottom | |
| Network Protocol | USB 2.0 | |
| Network Management Protocols | Ethernet, WiFi IEEE 802.11b/g/n, WiFi Direct | |
| Security Functions | TCP/IPv4, TCP/IPv6, LPD, IPP, PORT9100, WSD | |
| Mobile and Cloud Printing | | |
| Epson Connect | SNMP, HTTP, DHCP, BOOTP, APIPA, PING, DDNS, mDNS, SNT, SLP, WSD, LLTD | |
| Other Mobile Solutions | Limit Access Function, PIN No. Certification, LDAP Address Book, IP Address Filtering, Panel Admin Mode | |
| Control Panel | | |
| LCD Screen | Epson iPrint, Epson Email Print, Remote Print Driver, Scan to Cloud | |
| Printer Software | | |
| Operating System Compatibility | Apple® AirPrint®, Google Cloud Print™, Mopria Print Service | |
| Electrical Specifications | | |
| Rated Voltage | 4.3" TFT Colour Touch LCD | |
| Rated Frequency | Windows XP / Vista / 7 / 8 / 8.1 / 10, Windows Server 2003 / 2008 / 2012 / 2016, Mac OS X 10.6.8 or later | |
| Power Consumption | | |
| Operating | AC 220 - 240V | |
| Standby | 50 - 60 Hz | |
| Sleep | 29 W | |
| Power Off | 14 W | |
| Noise Level | | |
| PC Printing/ Plain Paper Default ^{*3} | 1.3 W | |
| Consumables | | |
| High Capacity Black | 0.2 W | |
| High Capacity Cyan | 6.6 B(A), 54 dB(A) | |
| High Capacity Magenta | Page Yield* | |
| High Capacity Yellow | 50,000 pages | |
| Maintenance Box | 20,000 pages (Composite Yield) | |
| Options | | |
| 500 Sheets Optional Cassette Unit | | |

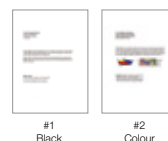
Dimensions & Weight

WF-C579R

Weight: 25.8 kg (56.9 lb)



*1 Print speed (Pages Per Minute) is calculated when printed on A4 plain paper in the fastest mode. Print speed may vary depending on system configuration, print mode, document complexity, software, type of paper used and connectivity. Print speed does not include processing time on host computer.



*2 The maximum number of printed pages per month based on the performance capabilities of the printer, including ISO rated print speeds and paper handling capabilities.

*3 Default mode in accordance with ISO7779 for MFPs.

*4 In accordance with ISO 24711/24712. Actual yields will vary considerably for reasons including images printed, print settings, temperature and humidity. Yields may be lower when printing infrequently or predominantly with one ink colour. A variable amount of ink remains in the cartridges after the "replace cartridge" signal. Part of the ink from the first cartridges is used for priming the printer. Ink is used for both printing and print head maintenance. All inks are used for both black and colour printing.

© 2019 Epson India Pvt. Ltd. All Rights Reserved. Reproduction in part or in whole, without the written permission from Epson, is strictly prohibited. EPSON and EXCEED YOUR VISION are registered trademarks of Seiko Epson Corporation. All other products names and other company names used herein are for identification purposes only and are the trademarks or registered trademarks of their respective owners. Epson disclaims any and all rights in those marks. Print samples shown are simulations only. Specifications and product availability are subject to change without notice and may vary between countries. Please check with local Epson offices for more information.

Apple, iPad and iPhone are trademarks of Apple Inc., registered in the U.S. and other countries. App Store is a service mark of Apple Inc.

Android is a trademark of Google Inc.

Dealer's Stamp

Information correct at time of printing
Printed September 2019

EPSON INDIA PVT. LTD.
12th Floor, The Millenia, Tower A, No.1,
Murphy Road, Ulsoor, Bangalore - 560 008.
Tel: 080-4566 5000 Fax: 080-4566 5005

Regional Offices:
Ahmedabad - 3314 8500/01, **Chennai** - 3967 7500, **Cochin** - 4012 315, **Coimbatore** - 98942 19200,
Kolkata - 4603 4714/15/29/30, **Mumbai** - 3079 8200, **New Delhi** - 3312 0300, **Pune** - 3028 6000/05,
Hyderabad - 4857 0032, **Jaipur** - 78699 11699



Epson Helpline: For product info or service- 1800 425 0011
For service - 1800 123 001 600 (9AM - 6PM) (Mon - Sat)

www.epson.co.in

