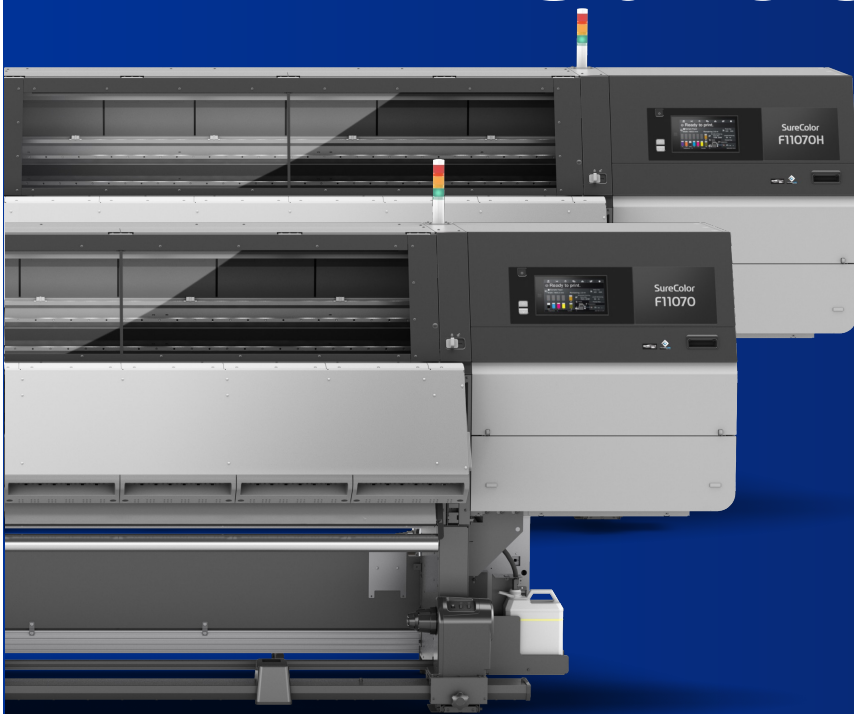


EPSON®

SureColor F11070 Series

Sales Reference Guide

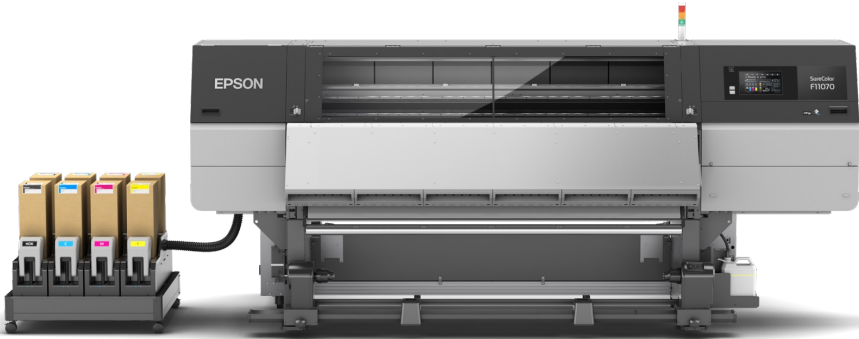


EPSON®

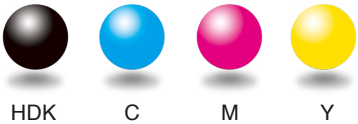
**Achieve breakthrough productivity
with this industrial-level dye-
sublimation solution.**



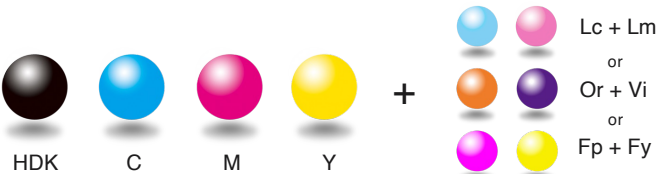
SureColor F-11070 Series



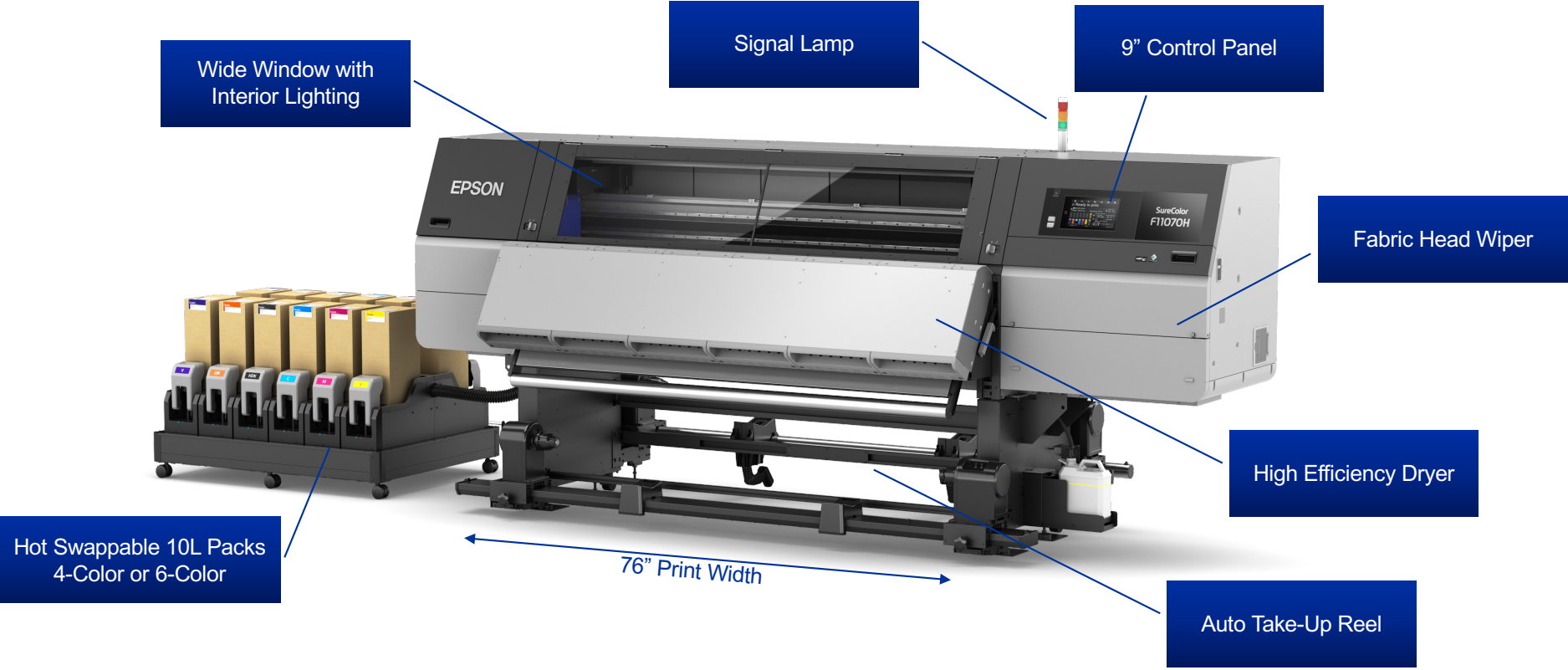
SureColor F11070
4-Color



SureColor F11070H
6-Color



Printer Overview



New Features & Innovations



New Color Option for F11070H:

- Orange and Violet inks for vivid colors
- Extends color palette than standard 4-color configuration
- Ideal for printing color critical corporate logos

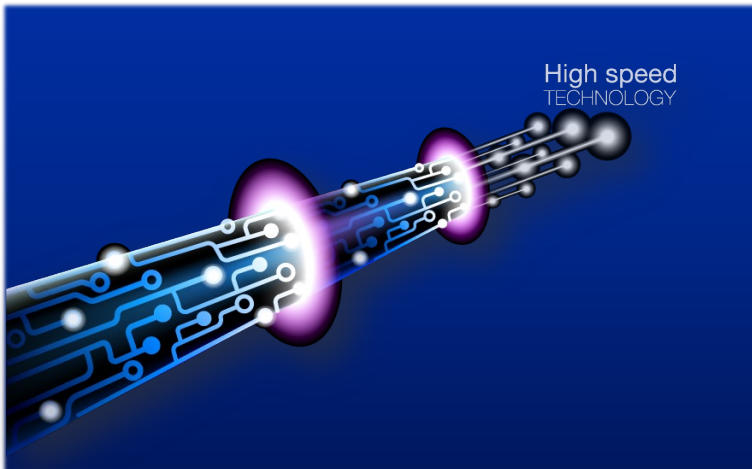
Optional Large Roll Unwinder
(Max. OD: 19.7" / Max. Roll Weight: 661 lbs.)

Built for High Performance

Designed for Maximum Production of Sellable Goods

Print Mode	SC-F11070 Print Speed 4-Color	SC-F11070H Print Speed 6-Color
Fashion / Signage	Up to 2,700 ft ² /hr	Up to 2,635 ft ² /hr
Sports Apparel	Up to 1,600 ft ² /hr	Up to 1,550 ft ² /hr

- **Advanced Multi-Core Processor** handles large data volume at high speed
 - Step and Repeat pattern printing handled by printer, freeing PC to work on next job
 - Speed-of-Light communication between processor and printhead via Optic Fiber
- **High Performance, Band-Free Low Pass Printing**
 - Advanced Auto-Media Tension Control System for accurate media feed control
 - Partial Overlap Printing and Epson Precision Dot virtually eliminates any banding
- **Job Connection** feature improves throughput by eliminating activities between jobs



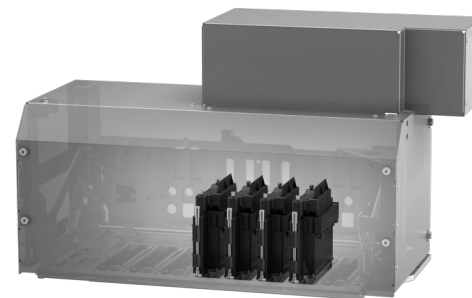
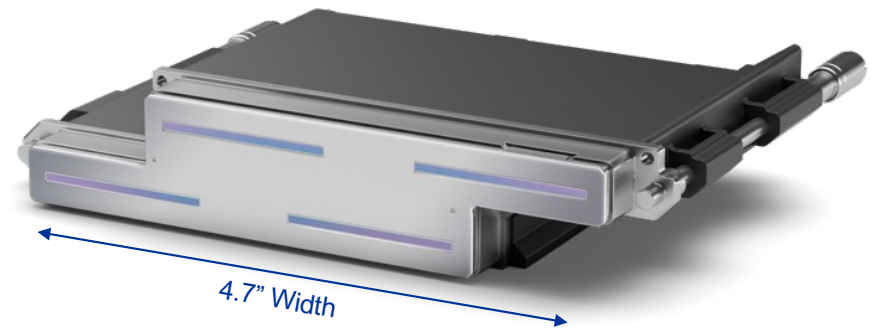
PrecisionCore Print Head Technology



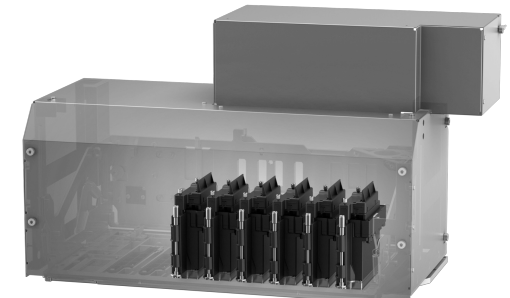
PRECISIONCORE
PRINTHEAD

Advanced High-Performance Printhead Technology

- **3,200 nozzles** per printhead
 - SureColor F11070 features **4 heads** = 12,800 nozzles
 - SureColor F11070H features **6 heads** = 19,200 nozzles
- Printhead width of **4.7 inches** delivers high productivity with extreme drop placement accuracy for outstanding print quality
- **Variable-Sized Ink Droplet Technology** with resolution up to 1,200 x 1,200 dpi for outstanding, sellable printed products
- **Nozzle Verification Technology (NVT)** monitors nozzle health by automatically compensating for irregular nozzles and automatically verifies and cleans nozzles without using media
- **Built-in redundancy** to continue production should an issue occur
- **User replaceable printhead** design requires no tools and can be completed in minutes.



F11070



F11070H

UltraChrome DS Ink Technology



High-Performance Ink Technology



- Bold color Ink set with **High Density Black ink** for rich color and high contrast
 - **Light Cyan and Light Magenta** available¹ for smooth tone gradations and reduced grain
 - **Fluorescent Pink and Fluorescent Yellow** available¹ for attention-grabbing, bright, and high-visibility applications
 - **Orange and Violet** available¹ for vivid colors and extended range of printable colors
- **Hot-Swappable Ink System** automatically switches from empty ink pack to new ink pack for uninterrupted printing
- **High volume 10 Liter ink packs** x 2 per color for cost-effective printing
- Inks conforms to Oeko-Tex ECO PASSPORT standard - When applied to fabric and appropriately fixed, garments have been determined safe for use by adults, children, and babies.²

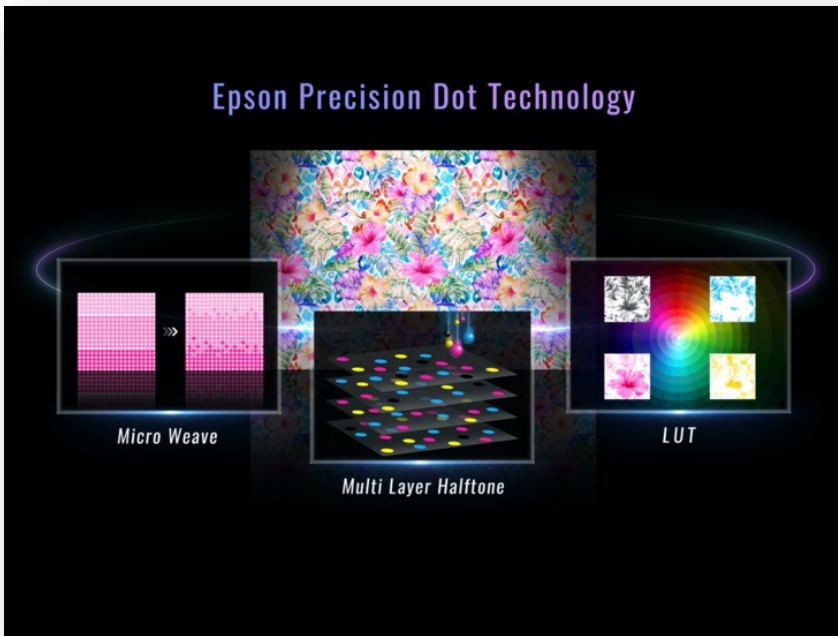
¹ The SureColor F11070H printer can be configured with Light Cyan/Light Magenta, Fluorescent Pink/Fluorescent Yellow, OR Orange/Violet. The ink type is not user changeable once set.

² When applied to fabric and appropriately fixed Epson UltraChrome DS ink has passed the standards set by OEKO-TEX® ECO PASSPORT. For further details on these standards please visit www.oeko-tex.com/ecopass.



Textile chemicals. Tested and verified.
www.oeko-tex.com/ecopassport

Precision Dot Technology



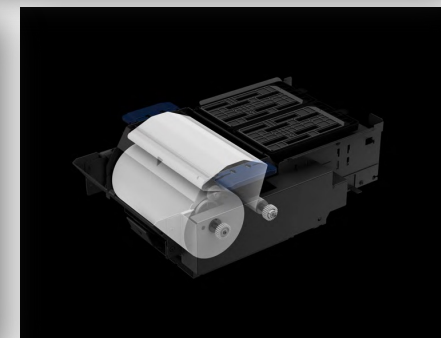
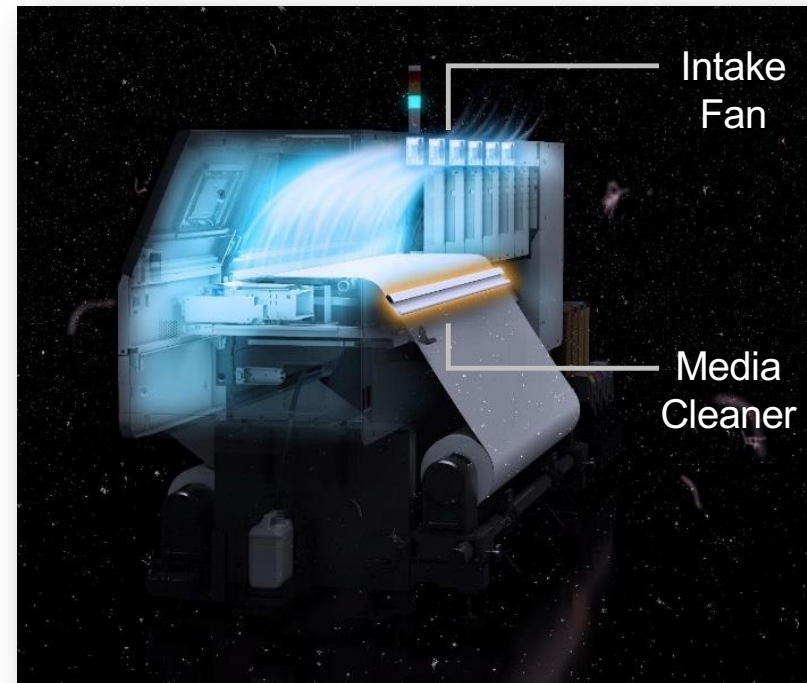
High Quality Image with Little Grain and Reduced Banding

- **Multi-Layer Halftone** technology produces consistent print quality even in the harshest factory environments
- **Optimized LUT** for maximum color gamut, smooth gradations, and color consistency under different lighting conditions
- **Optimized Micro weaving** with color separated partial overlap between print chips and passes results in uniform print quality and minimizes banding in low-pass print modes

Purposefully Designed

Features for Harsh Environments

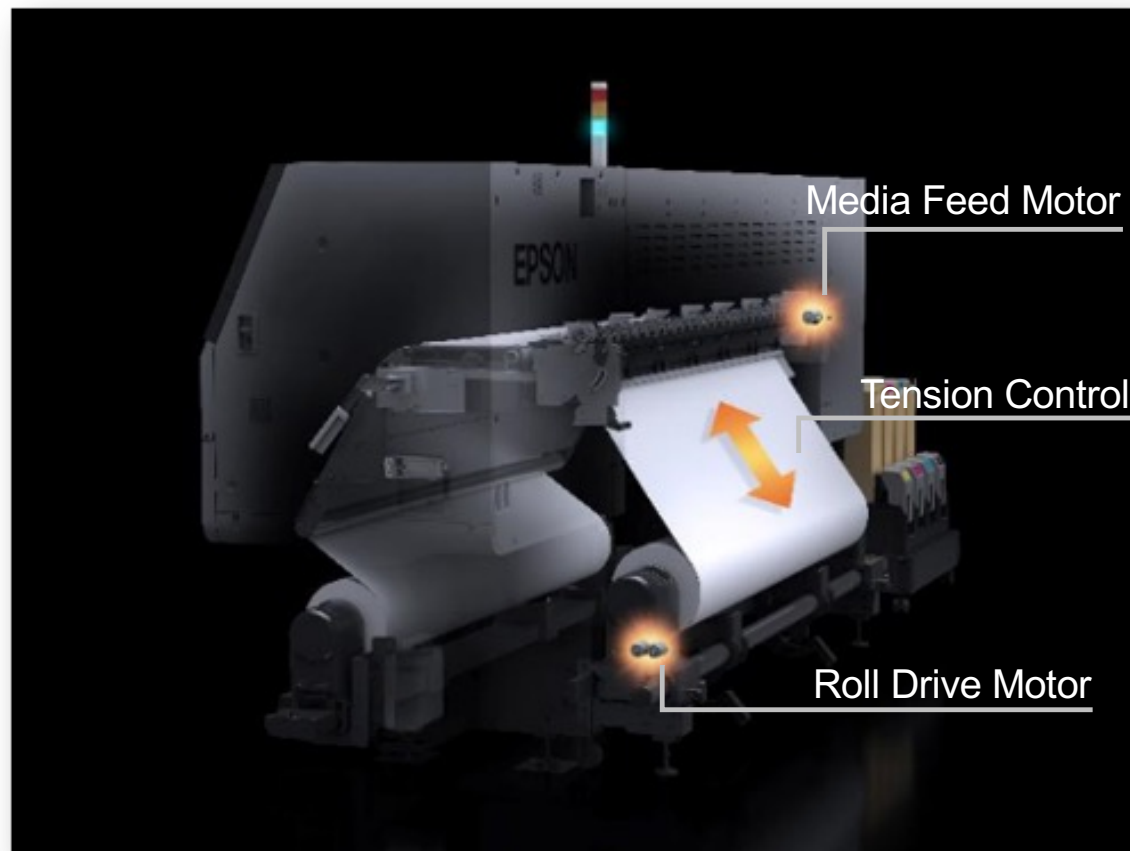
- **Active Air Filtration System**
 - Positive air pressure inside of printer helps prevent dust and fibers from contaminating paper and printheads.
- **Transfer Paper Cleaning System**
 - Fabric pads clean the media surface and remove dust prior to entering the printer
- **Printhead Fabric Wiper Cleaning System**
 - Cleaning fabric removes contaminants from printheads to ensure longer uptime



Purposefully Designed

Features for Media Tension Control

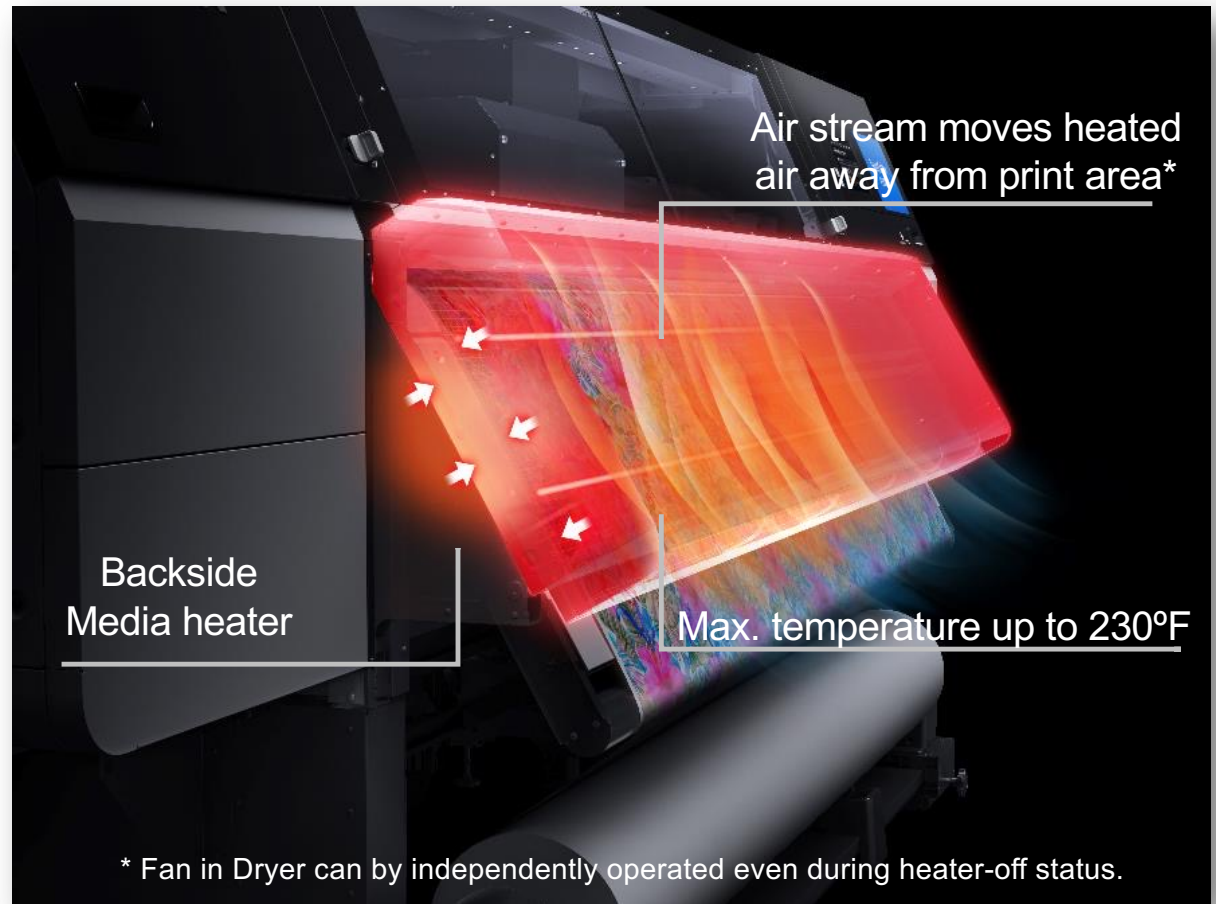
- **Advanced Auto-Tension Control**
 - **Accurate** and **stable** media feeding from beginning to end of the roll and onto the take-up reel, whether using the standard roll feeder or optional large roll feeder.



Purposefully Designed

Features for Efficient Media Drying

- **Compact Media Dryer**
 - High efficiency dryer rapidly dries and reduces wrinkles for full speed printing
 - Media surface temperature controlled during the printing process from the front and the back
 - Dryer prevents ink transfer to the backside of the media



Purposefully Designed

Intuitive Control Panel

The diagram illustrates the printer's control panel with several callouts:

- Header (frequently used icons):** A row of icons at the top including Menu, a pair of scissors, a lightbulb, a document, a printer, and an information icon.
- Messages (printer's status etc.):** A large checkmark icon followed by the text "Ready to print."
- Information on Consumables:** A section titled "Sample Paper" showing "Width: 1905.0 mm" and "Remaining: 2.0 m". To the right, "Platen Gap" is shown as "2.0 mm".
- Dryer Preheat "Start" button:** A button labeled "Preheat Stop" is located under the "Heater" section.
- Footer (Temp., Humidity, Date/Time):** The bottom of the panel displays "Temperature 20 °C", "Humidity 40 %", and the date/time "02-06-2020 11:40 am".

Other visible information includes ink levels for HDK, C, M, and Y, and a "Scheduled Cleaning" section with "Starts After 15H 30M" and "Length Remaining 30 m".

Epson Edge Print Software

Intuitive Print Software

Epson Edge Print is included

- Complete layout and printer management is standard
- Powerful color management technology in an easy-to-use and intuitive workflow
- Features an **Adobe® PostScript® 3™ Engine** for graphic file compatibility
- Equipped with tools specifically for digital textile printing, including step and repeat, spot color matching, and custom color library support

Compatible with Industry-Leading RIPs

- Partners include (listed alphabetically):
 - Caldera
 - ErgoSoft
 - Inedit
 - Onyx
 - Wasatch



Epson Cloud Solution PORT



Remote monitoring of your printing

- **Cloud-based, secure and encrypted** print fleet activity reporting
- View **dashboards** of your production rates, printer utilization, up-time, and more from any connected device
- **Live information** to optimize your production efficiency
- **Job Accounting** to provide greater insight to manage your business
- **Epson support** with fast, remote troubleshooting
- <https://www.epson.com/PORT>



Use of Epson Cloud Solution PORT requires an internet connection and supported web browser

Accurate Color Selection



Save Time with a Streamlined Color Workflow

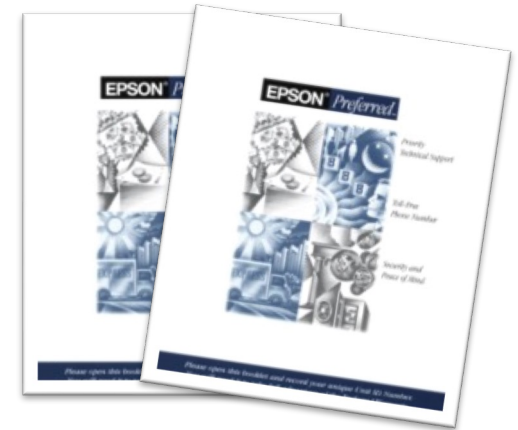
- Eliminate guess work with the **optional Epson SD-10 Spectrophotometer***
- Measure physical color samples with the push of a button
- Measured colors can be saved to **Epson Cloud Solution PORT** and imported into **Adobe Illustrator** with a plug-in
- **Create Custom Color Palette libraries** with ease
- **Verify print accuracy** for even the most demanding users

* Epson SD-10 Spectrophotometer sold separately

Epson Preferred Plus™ Extended Service Plans

Epson Preferred Plus Service plans include:

- Technical phone support Monday thru Friday from 6:00am until 6:00pm PST
- If required, usually next-business day onsite service
- Covers the printer, genuine Epson optional accessories, and Epson software
- Can be renewed for up to a total of 5 years of continuous coverage
- Select a plan that best fits your business needs:



	Epson Preferred Plus Plan	Epson Preferred Plus with Print Head Self-Service Plan ¹
Service (excluding print head) performed by:	Epson America	Epson America
Print head Replacement performed by:	Epson America	User
Print heads included in plan	Yes, Up to 1 print head per year	No, Print head available at discounted price
Service Coverage Period	1 Year, renewable up to 5 years	1 Year, 3 Year, or 5 Year plans available. Plans can be mixed to provide coverage up to 5 years

¹Epson Preferred Plus with Print Head Self-Service plans require enrollment in Epson Cloud Solution PORT. The printer must have internet connectivity when it is set up and when the customer replaces a print head. Epson recommends that the Printer have a full-time internet connection to allow customer to access advanced Printer-management features.

Complete Epson Genuine Solution



SureColor F11070 Summary

- **Industrial-level Production Speeds**
 - Up to 2,700 ft²/hr production print speed
 - Virtually no speed difference between 4-color or 6-color printer
 - Optional large roll unwinder provide longer continuous production
 - Efficient job processing for less idle time
 - Very little user maintenance needed to limit print production interruptions
- **Designed for High Reliability**
 - Rugged build quality designed for the harshest factory environments
 - Self-Aware print heads ensure quality output
 - Multiple levels of redundancy to minimize downtime
- **High Image Quality**
 - Epson UltraChrome DS inks produce amazing color with rich blacks
 - Epson Precision Dot Technology results in consistent, repeatable print quality
 - Choose from 4-color and 6-color options to meet your specific needs
- **Low Cost-of-Ownership**
 - High Capacity 10-Liter ink packs deliver low ink costs



Specifications are subject to change without notice

Print speeds for the SureColor F11070 series printer are based on print engine speed only, in bi-directional mode.
Total throughput times depend upon front-end RIP, file size, printer resolution, ink coverage, networking, etc.

The SureColor F11070 series is designed to use only Epson ink cartridges and refill packs and no other brands of new or refilled cartridges, or other brands of ink or bulk ink systems. Using Epson ink is important for reliable performance and high image quality.

*Oeko-Tex Standard specifies testing criteria for the presence of harmful substances within a textile product.
The standard belongs to the International Association for Research and Testing in the field of Textile Ecology (Oeko-Tex).

Epson, Epson UltraChrome, PrecisionCore, TFP, SureColor are trademarks or registered trademarks and
EPSON Exceed Your Vision is a registered logo mark of Seiko Epson Corp.

All other product brand names are trademarks and/or registered trademarks of their respective companies.
Epson disclaims any and all rights to these trademarks.

© Epson America, Inc. 2024 LH 03.19.24

EPSON®

**Create Customer Value.
Strive for Excellence.
Serve Others.**