

SPECIFICATIONS

MODEL NUMBER	TM-P20II		TM-P80II	
	Bluetooth	Wi-Fi	Bluetooth	Wi-Fi
Print Technology	Thermal Line Printing			
Printing Method				
Print Font				
Font	ANK: 12 x 24 / 9 x 24 (default) / 9 x 17 / 10 x 24 / 8 x 16; Kanji Font: 24 x 24 / 20 x 24 / 16 x 16; Special Font: 12 x 24 / 9 x 24; India Font: Width x 32 / Width x 24		ANK(48 cl): 12 x 24 / 9 x 17 (default) / 8 x 16; Jap Font: 12 x 24 / 10 x 24; Kanji Font: 24 x 24 / 20 x 24 / 16 x 16; Special Font: 12 x 24 / 9 x 24; India Font: Width x 32 / Width x 24 ANK(42 cl): 13 x 24 / 9 x 17 / 8 x 16; Jap Font: 13 x 24 / 10 x 17 / 8 x 16; Kanji Font: 26 x 24 / 20 x 24 / 16 x 16; Special Font: 12 x 24 / 9 x 24; India Font: Width x 32 / Width x 24	
Character Set	95 Alphanumeric, 18 set International, 128 x 43 graphics			
Barcode Standards	Bar code: UPC-A, UPC-E, JAN8, EAN8, JAN13, EAN13, ITF, Codabar(NW-7), Code39, Code93, Code128, GS1-128, GS1 DataBar 2D Symbol: PDF417, QR code, Maxi Code, Data Matrix, Aztec, Two-dimensional GS1 DataBar, Composite Symbology			
Interface				
Bluetooth Model	USB-C x1, Bluetooth 5.0			
Wi-Fi Model	USB-C x1, Wi-Fi 5.0			
Receive Data Buffer	64 KB	4 KB	64 KB	4 KB
Print Speed	100 mm/s			
Dot / Line	384 dots		576 dots (48 column), 546 dots (42 column)	
Dot / Inch	203 x 203 dpi			
Paper				
Roll Paper	58 mm (57.5 ± 0.5 mm) × Dia. 18 - 40 mm		79.5 ± 0.5 mm (W) × Dia. 18 - 51 mm	
Media Thickness	Max 75µm, Min 50µm			
Power				
Battery Type	Lithium Ion Battery			
Charging Port	USB-C			
Charging Rating				
	5V - 3A	3 Hrs (10 - 30°C), 6 Hrs (0 - 10°C)	2.5 Hrs (10 - 30°C), 5 Hrs (0 - 10°C)	
	5V - 1.5A	4 Hrs (10 - 30°C), 8 Hrs (0 - 10°C)	3 Hrs (10 - 30°C), 6 Hrs (0 - 10°C)	
	5V - 900/500mA	7 Hrs (10 - 30°C), 14 Hrs (0 - 10°C)	14 Hrs (10 - 30°C), 28 Hrs (0 - 10°C)	
Battery Life ^{*2}	27 Hrs	15 Hrs	47 Hrs	25 Hrs
Operating Temperature	-15 - 50°C (Normal), 0 - 40°C (While Charging)			
Humidity	10 - 90% RH			
Reliability				
Printer Mechanism Life	10 million lines			
Thermal Printhead Life	50 Km			
MTBF	120,000 hours			
MCBF	16 million lines			
IP Protection Rating	IP54			
Drop Rating	2.1m		1.9m	
Colour	Epson Black (EBCK)			
Overall Dimensions (W x D x H)	79 x 120 x 46 mm		105 x 138 x 57.6 mm	
Weight	Approx. 216g		Approx. 379g	
General Information				
LED Indicators	Blue LED - Power, Battery Level, Interfaces (Bluetooth, Wi-Fi) Orange LED - Error, Battery Charging			
Built-in Features	Paper Reduction, Status Notification, Server Direct Print			
Printer Driver	Windows Driver (APD), OPOS, OPOS.NET, JavaPOS(Windows, Linux), TM Virtual Port Driver, ePOS SDK (iOS, Android, Javascript)			
Utility Tools	TM Utility (Android, iOS), TM-P20II/TM-P80II Utility (Windows PC), TM-Print Assistant (Android, iOS), Deployment Tool, Monitoring Tool, Epson WebConfig, TM Bluetooth Connector, Firmware Updater, BmpToRaster, ePOS-Print ^{*3}			
Easy Setting	NFC			
What's in the Box	Belt Clip, Battery, USB Cable (Type-C to Type-C), Roll Paper, Setup Guide			

*1 Unicode Support applicable for languages listed above.

*2 Battery life result may differ from usage. Testing Conditions:

1) Battery: New 2) Start of Charging state: Full Charge 3) Print Patter: ANK 42 digits, 20 lines + paper feed for 6 lines
4) Interval of print: Each 5 minutes 5) Environment: normal temperature (25 degree) 6) Print density: 100%
7) Access point : CISCO AIR-LAP1142N-P-K9 8) Wi-Fi condition: beacon interval: 200ms, DTIM: interval 1, disable Broadcast
9) Battery state: from full charge to until 0% (E level)

*3 ePOS-Print applicable for Wi-Fi version only

EPSON INDIA PVT. LTD.
11th Floor, Godrej Centre, Sy No-26, Bellary Road, Hebbal, Sahakar Nagar, Byatarayanapura, Bengaluru - 560092 Tel: 080-4566 5000
Fax: 080-4566 5005

Regional Offices:
Ahmedabad 4037 0075, Chennai 3967 7500, Ernakulam 4012 315, Coimbatore 99620 00969
Hyderabad 4857 0032, Jaipur 0141 4923119,Kolkata 4603 4714/15/29/30, Mumbai 3079 8200
New Delhi 4107 3101, 4752 2414, 4226 3483, 4215 1033, Pune 3028 6000.

Epson Helpline: For product info or service - 1800 425 0011
For service: 1800 123 001 600 or 1860 300 016 00 (9AM - 6pm) (Mon - Sat)
Email: pos@eid.epson.co.in

www.epson.co.in

MOBILE POINT-OF-SALE PRINTER
TM-P20II/P80II

EPSON

DURABILITY
AND VERSATILITY
FOR ON THE FIELD
OPERATIONS.

DIMENSIONS & WEIGHT

TM-P20II
Weight: Approx. 216g



TM-P80II
Weight: Approx. 379g



©2023 Epson India Pvt. Ltd. All Rights Reserved.
Reproduction in part or in whole, without the written permission from Epson, is strictly prohibited.
EPSON is registered trademark of Seiko Epson Corporation.

All other product names and other company names used herein are for identification purposes only and are the trademarks or registered trademarks of their respective owners.

Epson disclaims any and all rights in those marks. Projected images shown herein are simulations. The actual product design and contents may vary. Specifications are subject to change without notice and may vary between countries. Please check with local Epson offices for more information.

Apple, iPad and iPhone are trademarks of Apple Inc., registered in the U.S. and other countries. App Store is a service mark of Apple Inc.

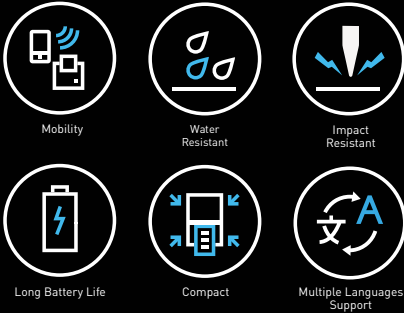
Android is a trademark of Google Inc.

Dealer's Stamp

Information correct at time of printing.
Printed November 2023

Durable and reliable POS printers for outdoor printing with user-friendly functions.

Designed with wearability in mind, the compact Epson TM-P20II/P80II portable receipt printer is the ideal solution for on-the-go printing with its long battery life and multiple connectivity options. With high impact protection, conforming to Ingress Protection 54 (IP54) standard for dust and liquid resistance, the portable printer is built to withstand harsh environments, ideal for outdoor work in adverse conditions.



Built For Outdoors

With high impact protection, conforming to IP54 standard for dust and liquid resistance, the TM-P20II/P80II is built to withstand outdoor use.

Outstanding Performance

Enjoy peace of mind during business operation with its long battery life of up to 47 hours*.

Compact Ergonomic Design

Designed for convenience and wearability in mind, the portable printer is compact and lightweight, with handy optional accessories.

*Battery life result may differ from usage.
Note: for battery life testing condition, please refer to disclaimer (superscript *2) under specifications page.

ERGONOMICALLY DESIGNED FOR RELIABILITY



ROBUST & DURABLE DESIGN

✓

High Impact Resistance*

With a drop rating of 2.1m for TM-P20II and 1.9m for TM-P80II, the portable receipt printer is a trusty component for businesses that require mobility and outdoor use.

✓

Dust Particles Resistance

Conforming to the IP54 dust resistance standard, you can conveniently use this portable printer for outdoor work or in adverse conditions.

✓

Liquid Resistance

Enjoy peace of mind when using your reliable TM-P20II/P80II printer with its certified IP54 splash resistance standard quality.

*Unit drop test JIS C60068-2-31:2013 (IEC 60068-2-31: 2008).



CATERED FOR OUTDOOR WORK

Long-lasting Battery Life

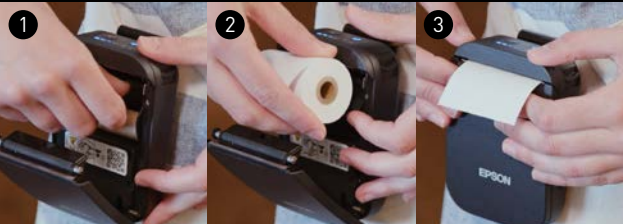
The all-new TM-P20II/P80II receipt printer comes with a long-lasting battery life that enables continuous use on both Wi-Fi and Bluetooth. Using the bundled USB Type C cable, the TM-P20II can be fully charged within 3 hours and P80II in 2.5 hours.

TM-P20II	TM-P80II
Wi-Fi model: up to 15 hours**	Wi-Fi model: up to 25 hours**
Bluetooth model: up to 27 hours	Bluetooth model: up to 47 hours

**Enabled Power Saving Mode.
Note: for battery life testing condition, please refer to disclaimer (superscript *2) under specifications page.

Convenient Paper Roll Replacement

The paper roll compartment is easily accessible even when you are wearing the TM-P20II/P80II receipt printer, allowing convenient and quick paper roll replacement in between use.



Handy Optional Accessories



The optional shoulder and belt strap allows users to access the printer easily. An optional carrying case further protect your printer against adverse conditions.



INTUITIVE FEATURES FOR EASY OPERATION

The TM-P20II/P80II is designed for seamless operation.

Clear Indicator

An easy-to-see indicator that shows the printer status at a glance.

Safety Design

With a hidden cutter design, users can operate the printer without worrying about getting injured.

Easy-to-clean Surface

A smooth printer surface allows quick and easy cleaning while on the go.



Compact & Wearable

Compact and lightweight, the TM-P20II/P80II receipt printer is suitable for direct-to-door, proof of delivery, marketplace receipt, and on-the-go receipt printing.

Multiple Language Support

The versatile TM-P20II/P80II is compatible with multiple languages including Chinese, Japanese, and Korean, with UTF-8 font support*.

*Unicode support is only for languages listed in the specifications sheet.



VERSATILE CONNECTIVITY

Multiple Interface Options

