

LARGE FORMAT INKJET PRINTER

Epson Stylus® Pro WT7900

EPSON
EXCEED YOUR VISION



THE TRUTH IS NOW IN THE PROOF.
Exceedingly accurate package proofing, with the
World's First Water-Based Printer with White Ink.

The Epson Stylus® Pro WT7900 is Epson's latest professional and high-performance package proofing printer. Powered by the finest of print technologies – the Micro Piezo™ printhead, and fuelled by the UltraChrome® HDR ink set, the Epson Stylus® Pro WT7900 delivers image quality that is sure to meet satisfaction. With superior prints, excellent colour stability, low maintenance and affordability, the Epson Stylus® Pro WT7900, is the revolutionary and smarter alternative to conventional DDCP systems.



1 Year
Warranty



Up to
61 cm (24")



Epson
Genuine Inks



Environment
Friendly



Ethernet



USB 2.0



Print
1440 dpi

ENGINEERED FOR BUSINESS

Precise, high-quality film proofs

The new Epson UltraChrome® HDR ink with White provides an extensive colour gamut that delivers high colour density and varying tints of white

Exceptionally sharp prints

The Epson Micro Piezo TFP™ Print Head optimises the new Epson UltraChrome® HDR ink with White to produce well-defined dots instantly

Professional print quality package proofs

Print directly on Epson's ClearProof™ Film for high-quality in-house proofs

Achieve high-quality proofing with razor sharp technologies that cut processing time and cost

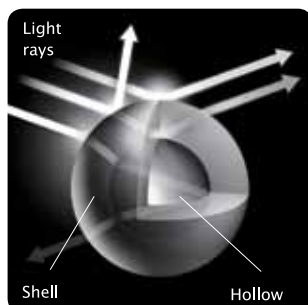
World's first water-based inkjet printer with white ink, the Epson Stylus® Pro WT7900 equipped with Micro Piezo TFP™ print head, is the ideal printer for professionals seeking a highly accurate and cost-effective alternative to costly, time-consuming conventional proofing systems with white ink.



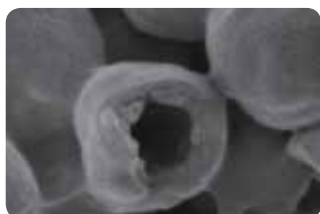
PRECISE, HIGH-QUALITY FILM PROOFS

High-density Epson UltraChrome® High Dynamic Range ink with White

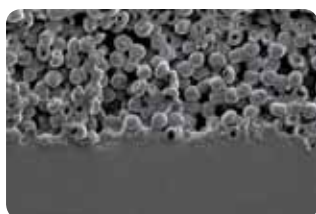
Specially developed for the Epson Stylus® Pro WT7900, the water-based white ink is perfect for printing soft packaging proof. This innovative white ink exhibits excellent white density and, unlike solvent and ultra-violet inks, it can be used in office environments. It is odourless and can be handled just as easily as conventional water-based inkjet printer inks.



Cross section of ink particle



Cross section of ink particle on media surface



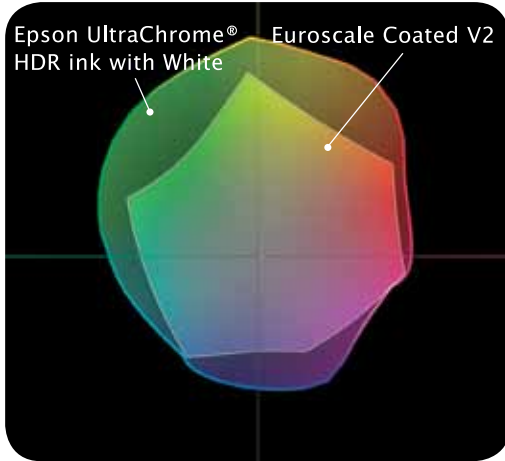
Tinted whites

With the colour control precision of the Epson Stylus® Pro WT7900, you can add subtle colour tints to white in order to simulate white ink used in the actual printing process.



Wide colour gamut

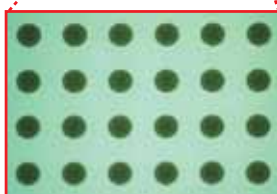
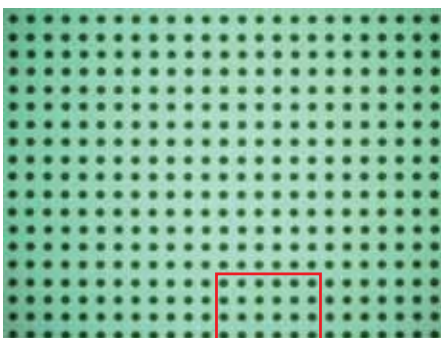
By including green and orange inks in the Epson UltraChrome® HDR ink set, colour gamut has been significantly expanded. This translates into richer, more accurate spot colour simulation and smoother tonal gradations.



EXCEPTIONALLY SHARP PRINTS

Advanced Micro Piezo TFP™ print head

The Epson Stylus® Pro WT7900 is equipped with Micro Piezo TFP™ print head, a cutting-edge technology optimised for Epson UltraChrome® HDR ink with White. It is highly durable and is capable of delivering well-defined dots with virtually no misting or satellites. It utilises Epson's own variable-sized droplet technology to produce ink droplets as small as 3.5 picoliters. Additionally, the print head is designed to markedly decrease print time while optimising image quality.



Consistently round ink droplets

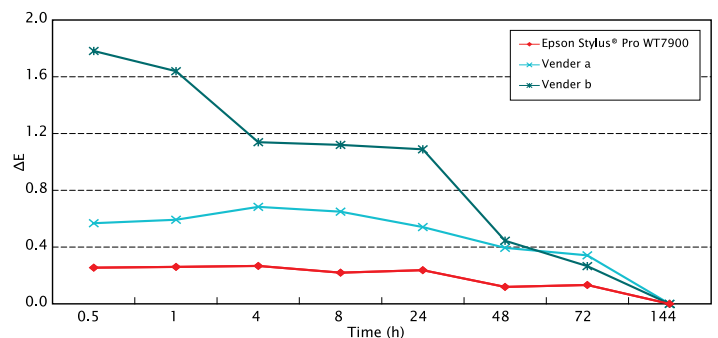
PROFESSIONAL PRINT QUALITY IN-HOUSE PACKAGE PROOFING WITH EPSON'S CLEARPROOF™ FILM

Faster drying time, excellent colour stability

Epson's ClearProof™ Film has high absorbency and ink adherence capabilities resulting in faster colour stability, faster drying time and excellent print quality even when printing vivid or deep colours that require high ink duty.



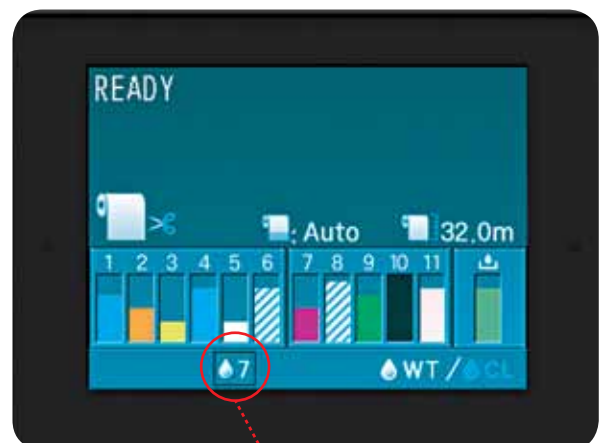
* Print quality comparisons performed under identical conditions.



DESIGNED FOR HIGH QUALITY PROOFING, EASY MAINTENANCE AND AFFORDABILITY

Low maintenance white ink

Unlike other white inks that need frequent agitation, Epson's white ink is virtually low maintenance. The pigment in the ink solution remains suspended longer, which means it requires minimum shaking of only once a week. For your added convenience, a message on the LCD panel will alert you when agitation is required.

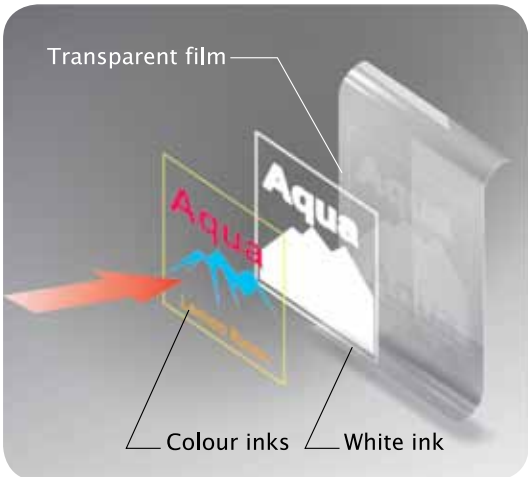


Alert!

Surface and reverse print modes

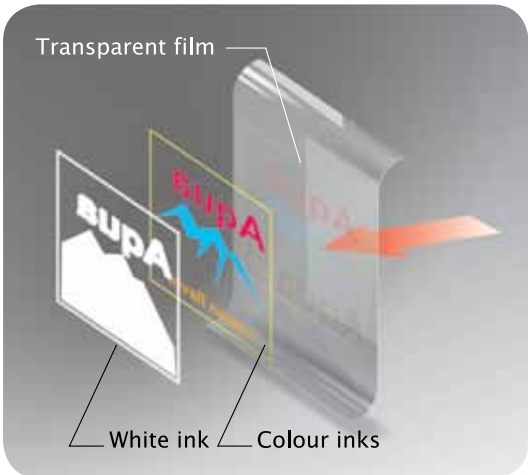
Two print modes fulfill a wide variety of proofing requirements. Surface print mode, which lays down white ink first before overprinting other colours, is ideal for printing on either transparent or opaque media. Reverse print mode does the opposite, producing rich, vivid proofs on transparent media that can be viewed from the non-printed side.

Surface print mode



Viewed from printed surface

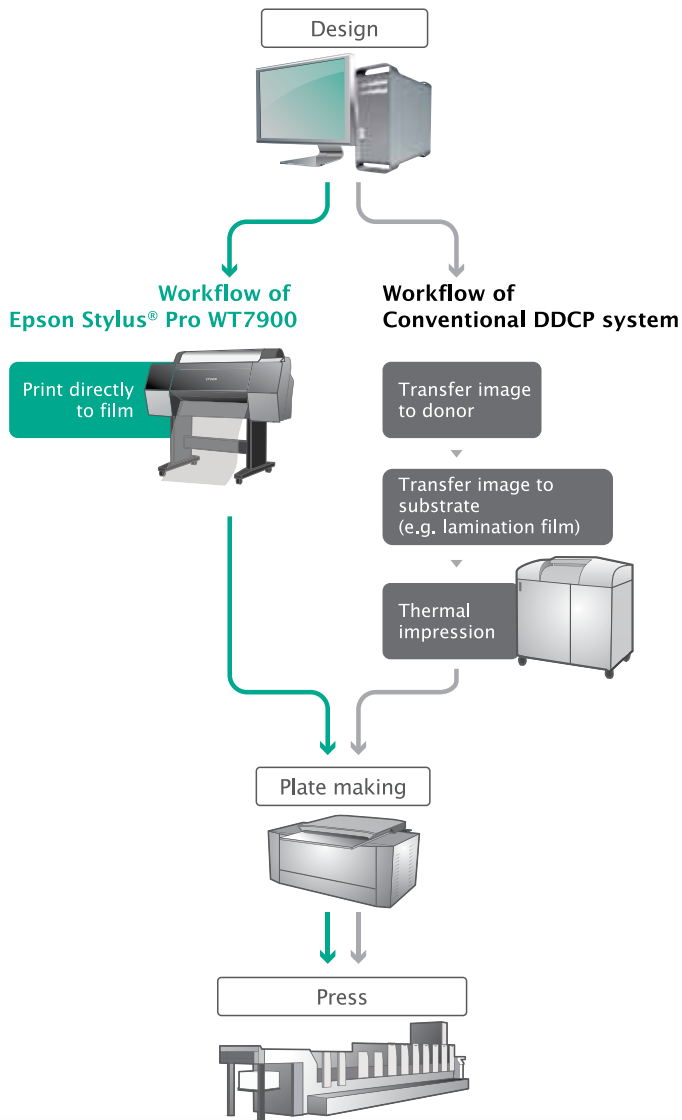
Reverse print mode



Viewed from behind printed surface

THE SMART AND SIMPLE WAY TO BETTER PROOFS

The Epson Stylus® Pro WT7900 is designed to fit current proof-to-print workflows with major Raster Image Processing (RIP) solutions. Because it works like a standard inkjet printer, no special skills are required to print beautiful proofs, unlike in conventional Direct Digital Colour Proofing (DDCP) systems.





Everything you need for superb in-house package proofing

The Epson Stylus® Pro WT7900 is loaded with features specially designed to breathe new life into package proofs.

EYE-CATCHING SPOT COLOURS



Customised spot colours never looked so good, thanks to the wide colour gamut provided by Epson UltraChrome® HDR ink with White and Epson ClearProof™ Film. The addition of orange, green and high-density white ink delivers outstanding spot colour coverage to meet virtually any package proofing requirement.

SMOOTH WHITE GRADATIONS



White ink makes it possible to produce beautiful white gradations on soft packaging films – indispensable when making soft package proofs.

PRECISE OVERLAYS



Epson's Micro Piezo TFP™ print head delivers superb accuracy, resulting in precise white trapping with colour.

FLEXIBLE MEDIA PROOFING CAPABILITY

The Epson Stylus® Pro WT7900, using Epson UltraChrome® HDR ink with White, is all you need to create precision proofs on a wide variety of media to simulate different packaging.



Transparent soft-package proofs



Continuous-tone soft-package proofs



Clear package box proofs

SPECIFICATIONS

Epson Stylus® Pro WT7900

PRODUCT CODE SIZE	C11CA68411 24-inch wide
PRINTING TECHNOLOGY PRINTING METHOD	MICRO PIEZO TFP™ print head 10-channel with Epson variable-sized droplet technology 360 nozzles per colour (x 10) Bi-directional printing, uni-directional printing Surface print mode, reverse print mode Auto head alignment technology
NOZZLE CONFIGURATION PRINT DIRECTION OTHERS	
PRINT QUALITY MAXIMUM RESOLUTION MINIMUM INK DROPLET VOLUME	1440 X 1440 dpi 3.5 pl
INK SYSTEM INK TYPE	Epson UltraChrome® HDR ink with White 9 colours (white, photo black, cyan, light cyan, vivid magenta, vivid light magenta, yellow, green, orange)
INK CAPACITY COLOUR INK WHITE INK CLEANING CARTRIDGE	700/350 ml 350/150 ml 150 ml
PRINT SPEED EPSON CLEARPROOF™ FILM – 1440 X 1440 DPI (A2) (UNI-DIRECTIONAL PRINTING)	Approx 23.7 min
MEMORY	Printer: 256 Mbyte, network: 64 Mbyte
PAPER HANDLING PAPER FEED METHOD ROLL DIMENSIONS	Friction feed 254 mm to 610 mm, 2-inch-core / 3-inch-core 2-inch-core: Maximum outside diameter 103 mm /
3-inch-core: Maximum outside diameter 150 mm CUT SHEET PRINTING AREA (WIDTH) MAX PAPER THICKNESS BORDERLESS PRINTING	210 mm to 610 mm Up to 600 mm 0.08 mm to 1.50 mm Not supported
INTERFACE	Hi-speed USB 2.0, Ethernet 10 base-T, 100 base-TX
SUPPORTED OPERATING SYSTEM	Raster Image Processor dependent
CONTROL PANEL COLOUR SIZE	2.5-inch colour LCD 320 X 200 pixels
CONTROL CODE	ESP/P raster ESC/P2
ENVIRONMENTAL CHARACTERISTICS TEMPERATURE	Operating: 10°C - 35°C Storage: -20°C TO 40°C
HUMIDITY	Operating: 20% to 80% (no condensation) Storage: 5% to 85% (no condensation)
DIMENSION / WEIGHT DIMENSION (WXDXH) WEIGHT	With media basket: 1,356 x 1,442 x 1,218 With media basket: approx 103 kg
ELECTRICAL SPECIFICATIONS VOLTAGE POWER CONSUMPTION	AC 100-240v 50/60Hz Operating: 60W Sleep mode: less than 14W Plug-in off (stand-by): less than 1W
ACOUSTIC NOISE LEVEL	Approx 50DB(A)
UTILITY SOFTWARE*	Communication driver Epson LFP remote panel 2 EpsonNet setup EpsonNet config Epson Network Utility *Windows® 2000/XP (32/64 bit), Windows Vista (32/64 bit)/Windows 7
OPTIONS & CONSUMABLES MAINTENANCE TANK AUTO CUTTER SPARE BLADE ROLL MEDIA ADAPTER SPECTROPROOFER® MOUNTER 24"	C12C890191 C12C815331 C12C811241 C12C890531
WARRANTY	1 year



SUPPLIES

EPSON ULTRACHROME® HDR INK WITH WHITE

CAPACITY	150 ML
CLEANING CARTRIDGE	C13T642000
WHITE INK CARTRIDGE	C13T642C00

CAPACITY	350 ML
PHOTO BLACK INK CARTRIDGE	C13T596100
CYAN INK CARTRIDGE	C13T596200
VIVID MAGENTA INK CARTRIDGE	C13T596300
YELLOW INK CARTRIDGE	C13T596400
LIGHT CYAN INK CARTRIDGE	C13T596500
VIVID LIGHT MAGENTA INK CARTRIDGE	C13T596600
ORANGE INK CARTRIDGE	C13T596A00
GREEN INK CARTRIDGE	C13T596B00
WHITE INK CARTRIDGE	C13T596C00

CAPACITY	700 ML
PHOTO BLACK INK CARTRIDGE	C13T636100
CYAN INK CARTRIDGE	C13T636200
VIVID MAGENTA INK CARTRIDGE	C13T636300
YELLOW INK CARTRIDGE	C13T636400
LIGHT CYAN INK CARTRIDGE	C13T636500
VIVID LIGHT MAGENTA INK CARTRIDGE	C13T636600
ORANGE INK CARTRIDGE	C13T636A00
GREEN INK CARTRIDGE	C13T636B00

© 2016 Epson India Pvt. Ltd. All Rights Reserved. Reproduction in part or in whole, without the written permission from Epson, is strictly prohibited. EPSON and EXCEED YOUR VISION are registered trademarks of Seiko Epson Corporation. All other product names and other company names used herein are for identification purposes only and are the trademarks or registered trademarks of their respective owners. Epson disclaims any and all rights in those marks. Print samples shown are simulations only. Specifications and product availability are subject to change without notice and may vary between countries. Please check with local Epson offices for more information. Apple, iPad and iPhone are trademarks of Apple Inc., registered in the U.S. and other countries. App Store is a service mark of Apple Inc. Android is a trademark of Google Inc.

*1 Figures represent print times only for the Epson test sample image as shown, produced on Plain (draft – fine modes) and Premium Photo paper (super fine & super photo modes). Print speeds are engine only with total throughput time dependant on workflow configuration, paper type, software, file format / size, print resolution, ink coverage, networking, and other factors.
*2 users need to choose to configure the machine with either light light black or violet. Once this choice has been made, it is final and cannot be undone or switched at a later time. 99% pantone coverage requires configuration with violet ink. Configured with light light black provides 98% pantone coverage.

Information correct at time of printing
Printed April 2018

CONTACT EPSON TODAY! EMAIL: vasu@eid.epson.co.in

SOUTH Alok Singh 098405 03210, Harishankar 098802 85075 **NORTH** Akhtar Imam 099101 08780, Ashutosh Kumar 098153 94550, Sudhir Kumar 093898 35156 **EAST** Sourov Kumar 098746 72616 **WEST** Miliind 098209 74733, Devendra 098509 49453.

EPSON INDIA PVT. LTD.

12th Floor, The Millenia, Tower A, No.1, Murphy Road, Ulsoor, Bangalore - 560 008. Tel: 080-30515000 Fax: 080-30515005



Epson Helpline: For product info or service - 1800 425 0011
For service - 1860 3000 1600 (9AM - 6PM) (Mon - Sat)
Email: lfp@epsonindia.in

www.epson.co.in

Dealer's Stamp



Official Partner
of Manchester United