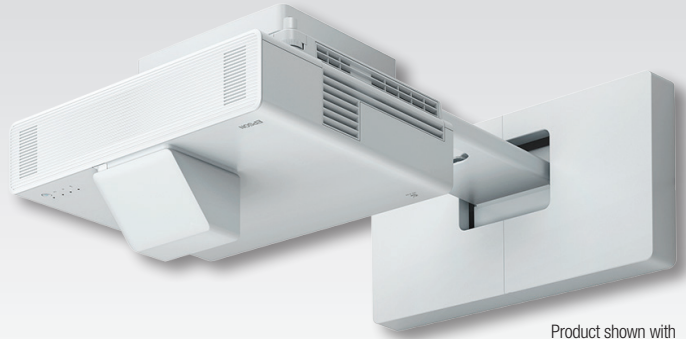


BrightLink[®] 1480Fi 1080p 3LCD Interactive Laser Display



Product shown with
mount, sold separately.

Interactive Laser Displays

Education

Create dynamic learning environments with this 3LCD 1080p¹ interactive laser display.

Super bright — 5,000 lumens color/white brightness²; up to 1080p Full HD laser display¹

Enhance learning environments — large, 100" display provides 75 percent larger interactive area than 75" panels

Laser light source life — virtually maintenance-free 20,000-hour laser light source with no lamps³

Pen-based interactivity — turn almost any wall or existing whiteboard interactive; allows up to two users to write and draw at once

Touch ready — optional touch module available for touch-based interactivity with up to six points of touch

Time-saving installation — automatic image alignment

Digital whiteboard — draw, save, print and email without a PC; share whiteboard content to other network-connected BrightLink projectors⁴

Built-in wireless — use free Epson iProjection[™] software to connect, display and share content simultaneously to/from up to 50 connected devices⁵

BrightLink GoBoard[™] Collaborative Whiteboarding Software — 1-year free trial offer⁶



Specifications

Native Resolution¹ 1080p (1366 x 768 x 2)
Resolution On Screen 1080p (2.1 million pixels)
Pixel Number 1,049,000 pixels (1366 x 720); 3 chips
Display System Epson[®] 3-chip 3LCD technology
Display Method Ceiling/wall mount/table mount
Driving Method Epson Poly-Silicon TFT Active Matrix
Color Brightness² Color Light Output: 5,000 lumens
White Brightness² White Light Output: 5,000 lumens
Aspect Ratio 16:9 (native); supports 4:3, 16:10
Size (Projected Distance) Area (16:9) 65" – 100"
Keystone Correction (Manual)
 Horizontal: ± 3 degrees
 Vertical: ± 3 degrees
USB Plug 'n Play Mac[®] 10.4 or later; Windows[®] 7 or later
Contrast Ratio Up to 2,500,000:1
Color Reproduction Up to 1.07 billion colors
Illumination Technology Laser Diode
Light Source Life³ 20,000 hours (Normal)
 30,000 hours (Extended)

Wireless Specifications

Supported Security Mode
 Access Point (WiFi Direct[®]): WPA2-PSK (AES)
 Advanced Mode: OPEN, WPA2/WPA3 PSK
 Supported EAP Type: PEAP, PEAP-TLS, EAP-TLS, EAP-Fast
Supported Speeds
 IEEE 802.11b: 11 Mbps* (2.4 GHz)
 IEEE 802.11g: 54 Mbps* (2.4 GHz)
 IEEE 802.11n: 72.2 Mbps* (2.4 GHz)
 IEEE 802.11a: 54 Mbps* (5 GHz)
 IEEE 802.11n: 150 Mbps* (5 GHz)
 IEEE 802.11ac: 325 Mbps* (5 GHz)
 *Maximum speed and range are achievable when used with the same Enhanced Mode technology. Actual data rates, features and performance may vary depending on your computer system, the environment and other factors.

Projection Lens

Type Manual focus
F-Number 1.50
Focal Length 3.9 mm
Throw Ratio Range (16:9) 0.27 – 0.37, (4:3) 0.37 – 0.50, (16:10) 0.30 – 0.42
Zoom Ratio Digital zoom 1.0 – 1.35x

Other

Speaker 2x 8 W
Operating Temperature 32° to 104 °F (0° to 40 °C)
Power Supply Voltage 100 – 240 V ± 10%, 50/60 Hz
Power Consumption
 ECO Mode: 270 W
 Normal Mode: 381 W
 Standby (Communication On): 2.0 W
 Standby (Communication Off): 0.5 W
Fan Noise
 Quiet Mode: 27 dB
 Normal Mode: 36 dB
Security Kensington lock provision, security anchor bar, password-protect function

Interfaces

HDMI[®]: 3x
 HDMI Out: 1x
 Computer/Component Video: 2x D-sub 15 pin
 Composite Video: 1x RCA (yellow)
 Audio In: 3x Mini stereo
 Audio Out: 1x Mini stereo
 Microphone In: 1x
 USB Connector: 2x Type-B (USB display, audio and mouse, k/b control interactivity)
 USB Connector: 2x Type-A (USB memory/document camera)
 RJ-45: 1x
 Serial: 1x RS-232c
 Monitor Out: 1x D-sub 15 pin (shared with computer 2)
 Integrated Wireless LAN: 802.11 b/g/n/ac
 Interactive Synchronization: Mini Stereo In
 Interactive Synchronization: Mini Stereo Out
 Touch Unit Connection Port: 1x



Interactivity

Interactive Technology Infrared, 850 nm
Interactive Area (Image Size) 65" – 100" diagonal (16:9, 1080p)
Input Device Digital pen or finger
Number of Pens 2
Number of Pen Tips 6 (4x felt/soft tip, 2x Teflon[™]/hard tip)
Pen Functions Mouse functions (left and right click), electronic pen, LED battery status indicator
Pen Specifications Size: 6.3" (L) x 0.95" (W); Weight: 1.1 oz (without battery)
Power AA battery
Compatible Battery Types 1x AA, Manganese dry cell, Alkaline dry cell, Panasonic eneloop[™] BK-3MCCX
Calibration Method Automatic or Manual
Interactive Modes
 Whiteboard Mode: 2x pens and 6x fingers
 PC-Free Annotation Mode: 2x pens and 6x fingers
 Computer Interactivity Mode, Easy Interactive Tools: 2x pens and 6x fingers

Requirements for Computer Interactivity
 Connection to the Computer: Via USB cable or wired/wireless LAN
 Software System Compatibility: Epson Easy Interactive Driver for Mac only; Windows driver for Multi Projection; Windows (single projector) and Linux[®]: No driver required
 Mac: Mac OS X[®] 10.7.x or later
Interactive Software Requirements Epson Easy Interactive Driver (Mac and PC — required for DuoLink); Windows and Linux: driver not required; Mac: Mac OS X 10.7/10.8/10.9/10.10/10.11/macOS[®] 10.12.x Epson Easy Interactive Tools for Windows and Mac
System Compatibility Microsoft[®] Windows 8/8.1, Windows 10, Windows 7 SP1 (all editions except for Starter), macOS 10.11/macOS 10.12.x, UBUNTU, 16.04 LTS, 19.04, 18.04 LTS
GoBoard Software Requirements
 Windows 10 version 1803 or later
 CPU quad-core 2GHz
 RAM DDR3 8 GB
 Camera and microphone (for AV conferences, voice commands)

Dimensions (W x D x H)

Measurements 18.1" x 18.2" x 14.8"
Weight 21.4 lb with cable cover (9.7 kg)

Remote Control

Features Source Search, HDMI, USB, Computer, LAN, Power, Aspect, Color Mode, Volume, E-Zoom, A/V Mute, Freeze, Menu, Home, Auto, Enter, Esc, Default
Operating Angle
 Rear: Right/Left: -55 to +55 degrees, Upper/Lower: +75 to +15 degrees; Front: Right/Left: -30 to +30 degrees, Upper/Lower: 0 to +60 degrees
Operating Distance 19.7 ft (6 m)

Eco Features

Energy-efficient 3LCD light engine
 RoHS compliant
 Recyclable product⁹
 Epson America, Inc. is a SmartWay[®] Transport Partner⁹

Support

Service Programs 3-year projector limited warranty, Epson Road Service program, dedicated toll-free support

What's in the Box

BrightLink 1480Fi, lens cover, rear cable cover, Quick Setup Guide, 6' power cable, 3x USB A/B cables, projector remote control with two AA batteries, pen holder, markers for auto screen adjustment, IR reflectors, 2x interactive pens, extra pen tips, battery charger and 2x AA rechargeable batteries (for interactive pens), warranty statement, 1-year license key for BrightLink GoBoard Software

Ordering Information

BrightLink 1480Fi	V11H921520
Ultra Short-Throw Wall Mount (ELPMB62)	V12HA06A05
Air Filter	V13H134A56
Finger Touch Module	V12H007A23
PowerLite [®] Pilot [™] 3 (ELPCB03)	V12H927020
Pixie Plus ELPSP10	ELPSP10
Document Camera DC-21	V12H758020
External Speakers (ELPSP02)	V12H467020
Wireless 802.11b/g/n LAN Unit (ELPAP11)	V12H005A02
100" Whiteboard 16:9 Aspect Ratio	V12H006A02
Interactive Pen A (orange)	V12H773010
Interactive Pen B (blue)	V12H774010
Replacement Pen Tips (hard/Teflon)	V12H775010
Replacement Pen Tips (soft/felt)	V12H776010
Touch Module Bracket	V12HA05A09

¹ Pixel shifting technology achieves Full HD resolution on screen. | ² Color brightness (color light output) and white brightness (white light output) will vary depending on usage conditions. Color light output measured in accordance with IDMS 15.4; white light output measured in accordance with ISO 21118. | ³ No required maintenance for the light source for up to 20,000 hours. Approximate time until brightness decreases 50% from first usage. Measured by acceleration test assuming use of 0.04 - 0.20 mg/m³ of particulate matter. Time varies depending on usage conditions and environment. Replacement of parts other than the light source may be required in a shorter period. | ⁴ BrightLink 1485Fi and 1480Fi projectors only. Cannot share to earlier models. | ⁵ For wireless functionality, including via the Epson iProjection App, the projector must be configured on a network, either through the Ethernet port on the projector (check model specifications for availability) or via a wireless connection. Check your owner's manual to determine if a wireless LAN module must be purchased separately to enable a wireless connection. Not all Epson projectors are able to be networked. The Epson iProjection App does not support all files and formats. See www.epson.com for details. | ⁶ GoBoard Collaborative Whiteboarding Software requires a Windows 10-based PC. Not included. | ⁷ Wi-Fi CERTIFIED[™]; level of performance subject to the range of the router being used. | ⁸ For convenient and reasonable recycling options, visit www.epson.com/recycle | ⁹ SmartWay is an innovative partnership of the U.S. Environmental Protection Agency that reduces greenhouse gases and other air pollutants and improves fuel efficiency.

Learn more about how our products can empower your institution. Visit us at www.epson.com/foreducation

Better Products for a Better Future[™]
eco.epson.com



Epson America, Inc.
 3131 Katella Ave., Los Alamitos, CA 90720

Epson Canada Limited
 185 Renfrew Drive, Markham, Ontario L3R 6G3

www.epson.com
www.epson.ca

Specifications and terms are subject to change without notice. EPSON and PowerLite are registered trademarks, EPSON Exceed Your Vision is a registered logomark and Epson iProjection and Better Products for a Better Future are trademarks of Seiko Epson Corporation. BrightLink and PrivateLine are registered trademarks and GoBoard and Pilot are trademarks of Epson America, Inc. Mac, macOS and OS X are trademarks of Apple Inc., registered in the U.S. and other countries. Microsoft and Windows are either registered trademarks or trademarks of Microsoft Corporation in the United States and other countries. Wi-Fi Direct[®] is a registered trademark of Wi-Fi Alliance[®]. SmartWay is a registered trademark of the U.S. Environmental Protection Agency. All other product and brand names are trademarks and/or registered trademarks of their respective companies. Epson disclaims any and all rights in these marks. Copyright 2022 Epson America, Inc. Com-SS-Oct-13 CPD-58163R2 7/22