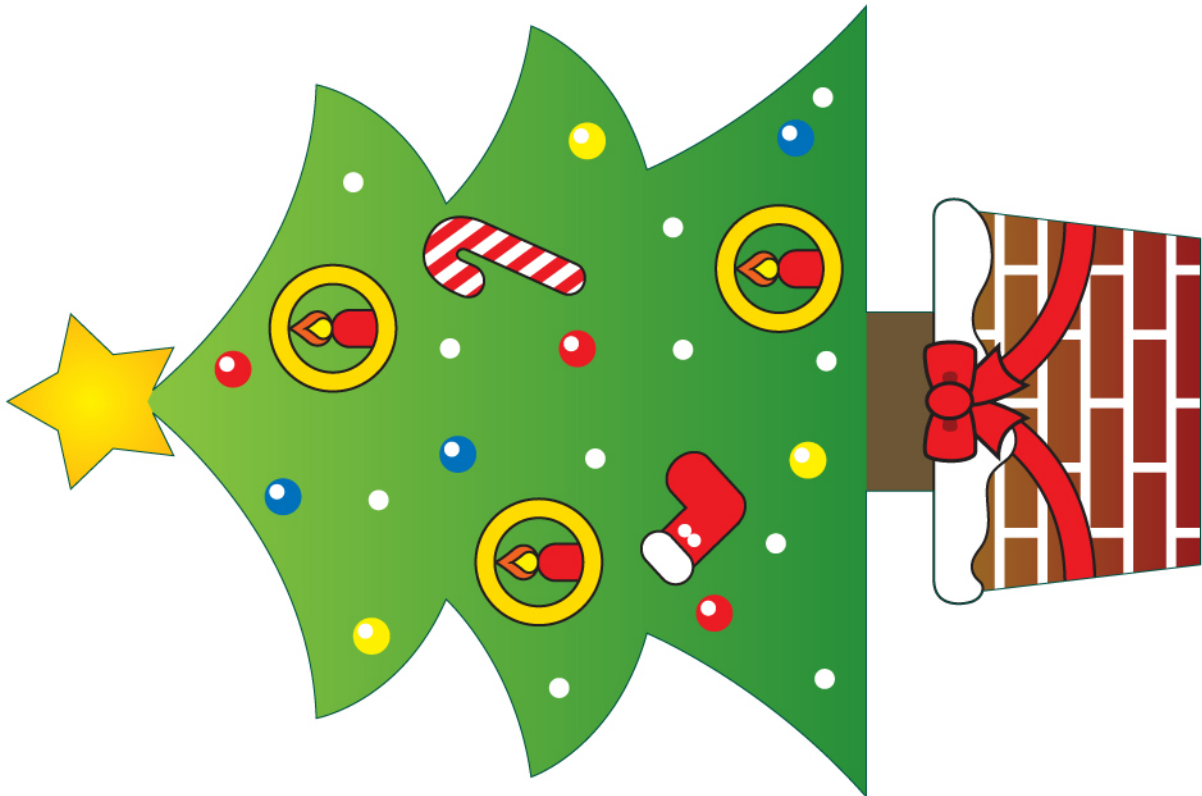
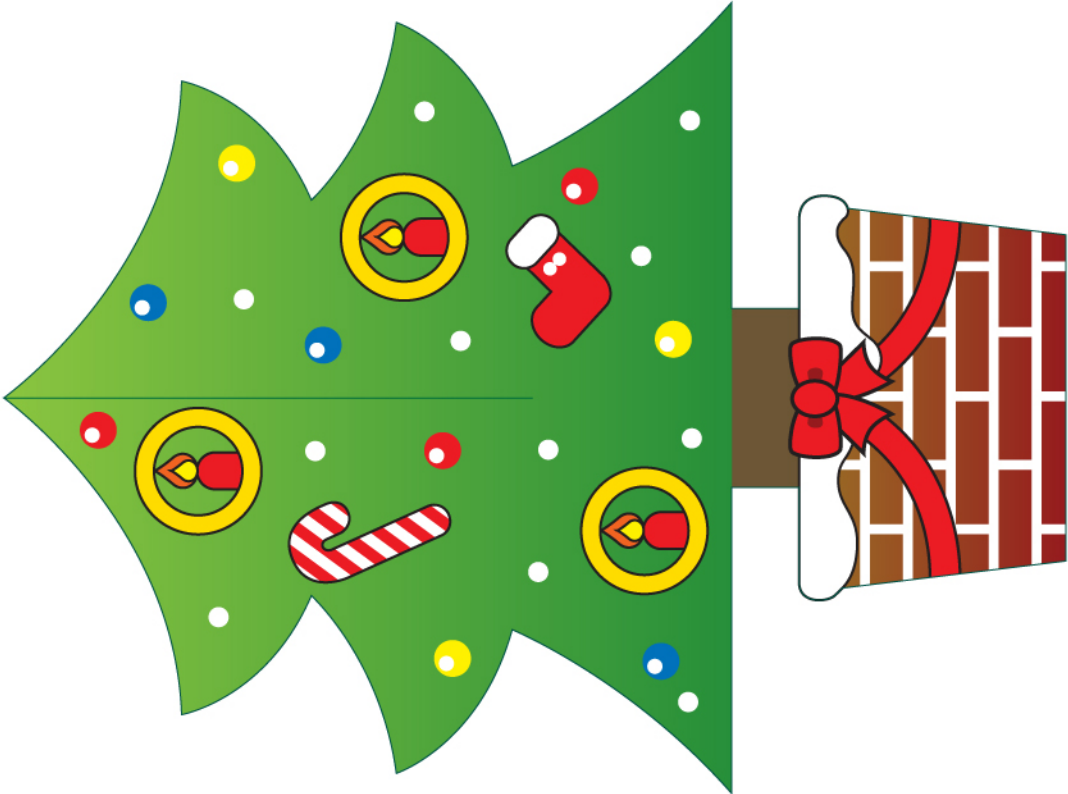


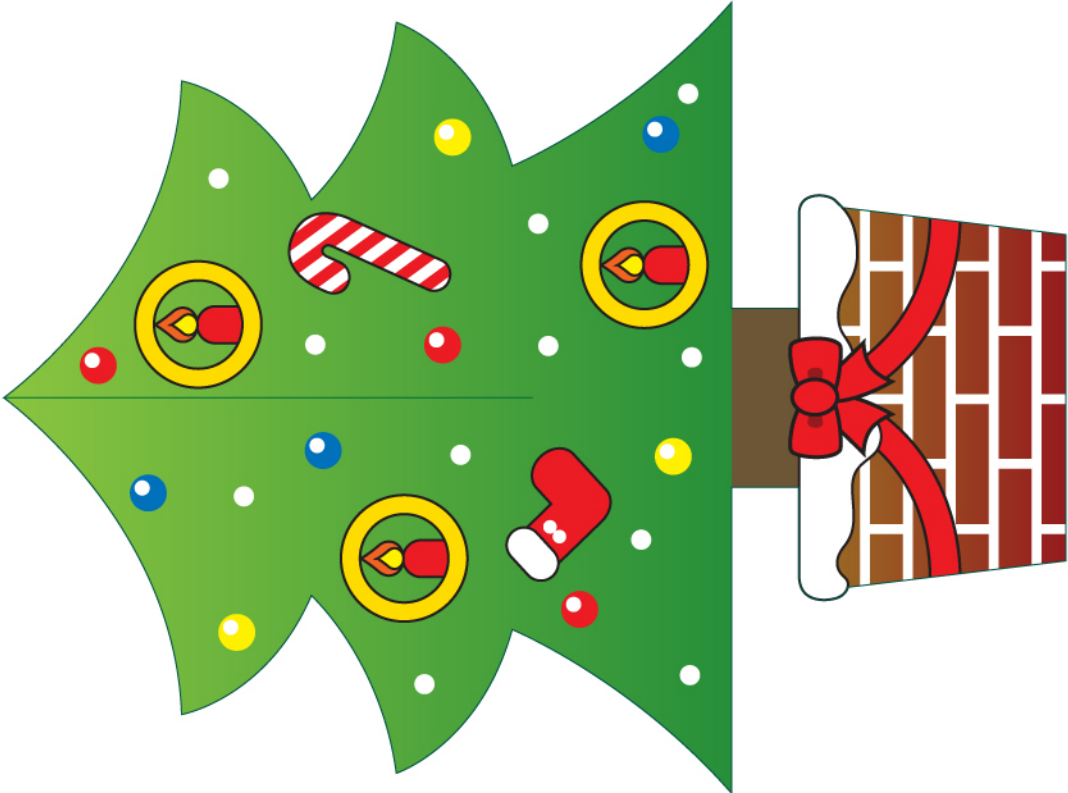
C01



C02



C03



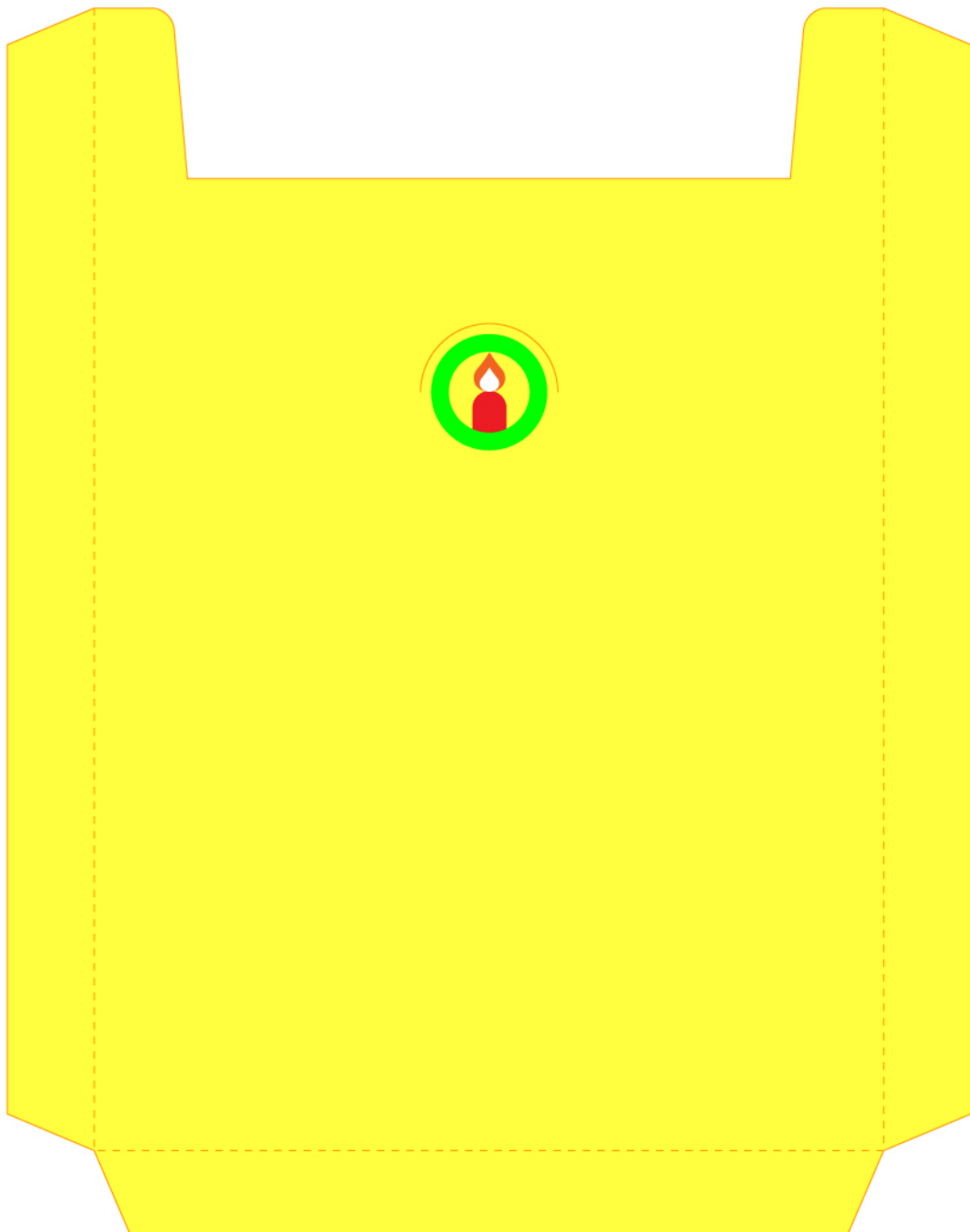
C04



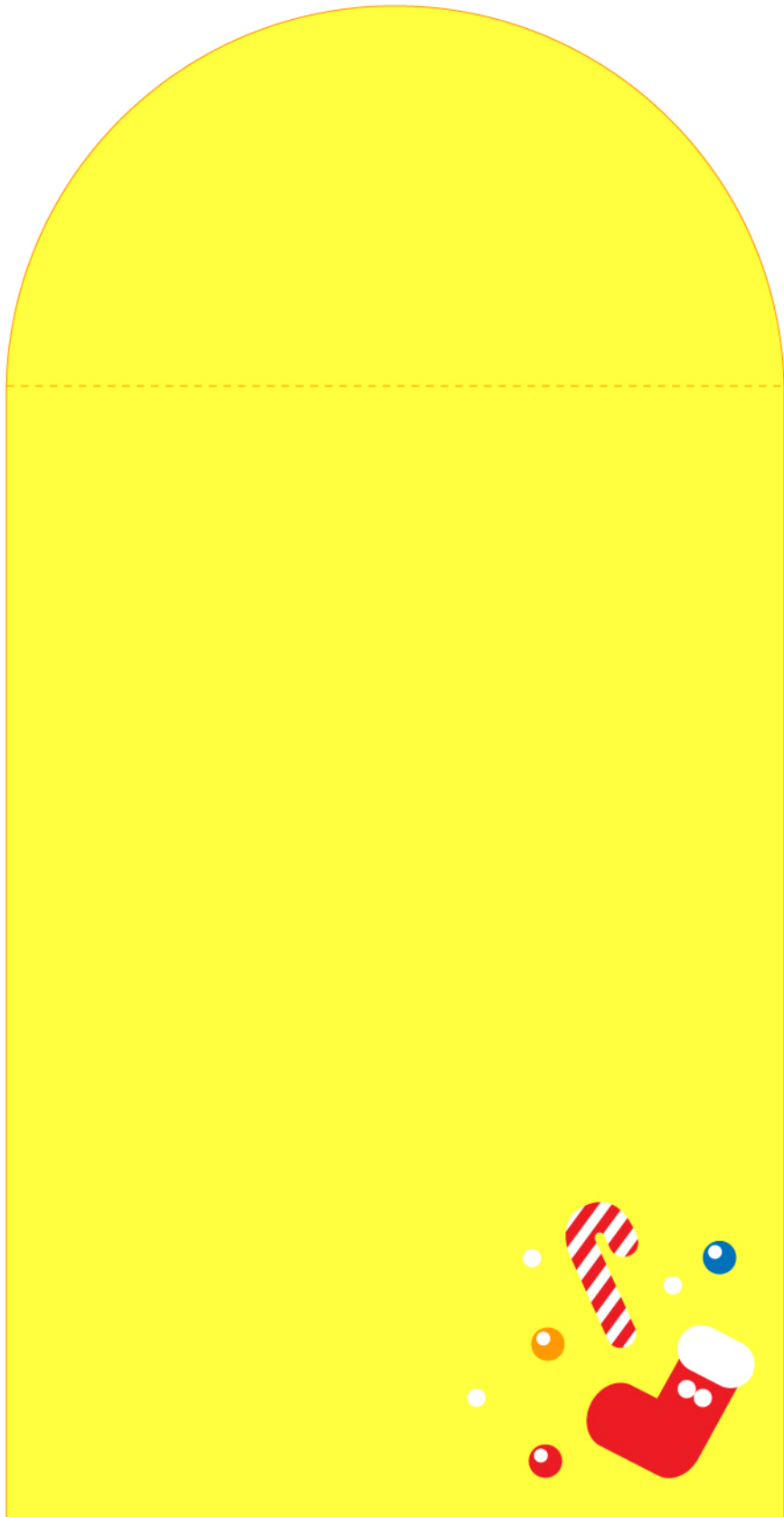
C05



C06





C07



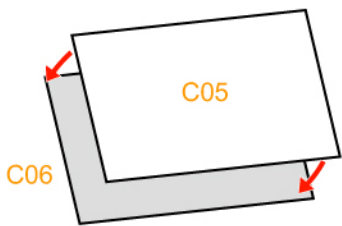
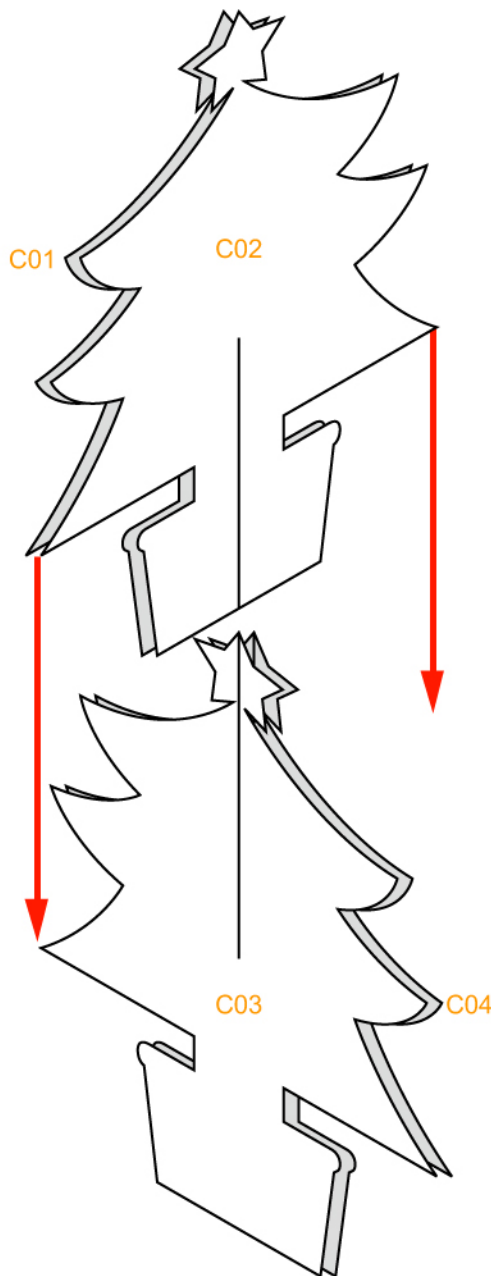
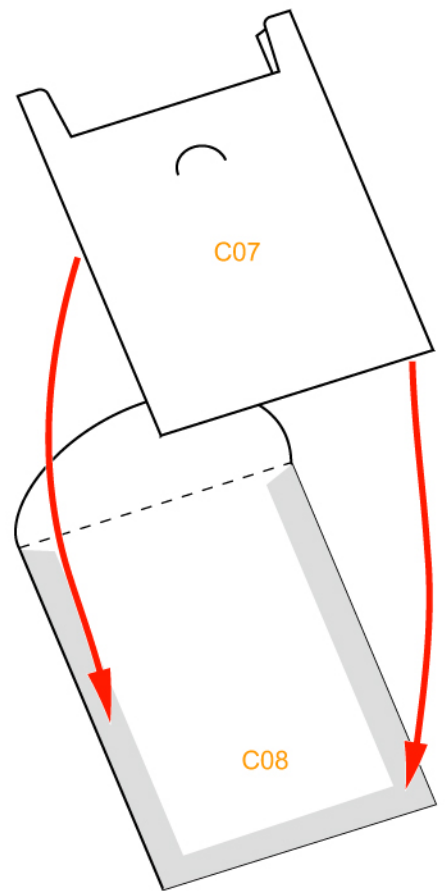
C08

組合說明

--- 山折線 

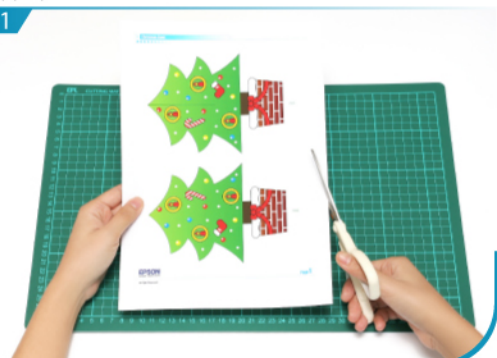
--- 谷折線 

✗ 切除部分



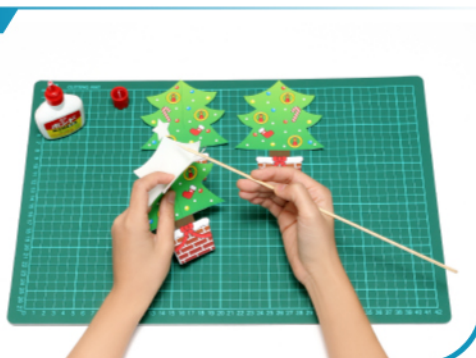
製作步驟

1



沿線剪出其他組件。為免混淆，可先在組件背面劃上記號。

2



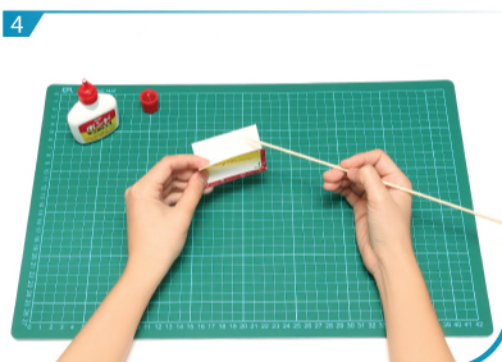
將C01及C02對摺後黏好，再將C03及C04對摺後黏好。

3



將C01及C03的綠色線剝開，再按組合說明拼合。

4



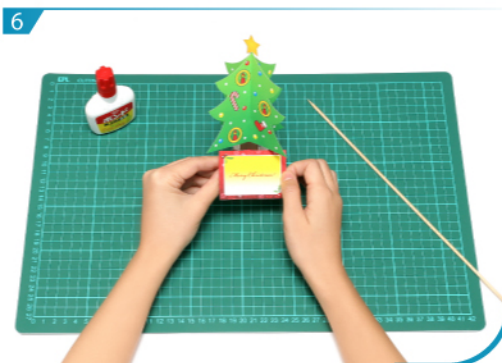
將C05及C06黏好。

5



將C07及C08摺疊貼好，形成封套。

6



一張精緻的聖誕卡完成了。