

SPECIFICATIONS

MODEL NUMBER	EB-810E
SKU Number	VH11HA99056
Projection Technology	RGB liquid crystal shutter projection system (3LCD)
Specifications of Main Parts	
LCD	Size: 0.62" (C2Fine) Resolution: 1080P (4K Enhancement) Aspect Ratio: 16:9
Projection Lens	Type: Focus (Manual) F-Number: 1.80 Focal Length: 2.3mm Zoom Ratio: 1.0 – 1.35 (Digital Zoom) Throw Ratio: 0.16 – 0.22 (Wide – Tele)
Light Source	
Type	Laser Diode
Life (Normal / Quiet / Extended)	20,000 / 20,000 / 30,000 hrs
Screen Size (Projected Distance)	
Zoom: Wide	80" to 160" (27.8 – 57.8 m) @ 16:9 66" to 130" (28.1 – 57.4 m) @ 4:3 74" to 148" (27.8 – 57.8 m) @ 16:10 76" to 151" (27.9 – 57.5 m) @ 21:9 75" to 148" (28.0 – 57.4 m) @ 16:6 60" to 118" (28.2 – 57.5 m) @ 16:9 49" to 96" (28.2 – 57.2 m) @ 4:3 55" to 109" (27.9 – 57.4 m) @ 16:10 57" to 112" (28.2 – 57.6 m) @ 21:9 56" to 110" (28.3 – 57.6 m) @ 16:6
Zoom: Tele	
Brightness¹	
White Light Output (Normal / Eco)	5,000lm / 3,500lm
Colour Light Output (Normal)	5,000lm
Contrast Ratio	Over 2,500,000 : 1
Internal Speaker(s)	
Sound Output	8W x 8W Stereo
Geometry Correction	
Quick Corner	Yes
Connectivity	
Digital Input	HDMI: 2 (HDCP 2.3) HDBaseT: 1 (HDCP 2.3)
USB Input	USB Type A: 2 (Port 1 for PC Free, Firmware Update, Copy OSD Settings, ELPAP11 ; Port 2 for PC Free, Firmware Update, Copy OSD Settings or 5V/2A Power Supply) USB Type B: 1 (For Firmware Update, Copy OSD Settings)
Control I/O	RS-232C: D-Sub 9pin x 1
Digital Output	HDMI: 1 (HDCP 2.3)
Network	Wired LAN: RJ45 x 1 (100Mbps) Wireless LAN: Built-in and Optional (using ELPAP11)
Wireless LAN (In-Built) and Screen Mirroring	
Supported Speed For Each Mode	Infrastructure: IEEE 802.11b (2.4GHz): 11Mbps ² , IEEE 802.11g (2.4GHz): 54Mbps ² , IEEE 802.11n (2.4GHz): 72.2Mbps ² , IEEE 802.11a (5GHz): 54Mbps ² , IEEE 802.11n (5GHz): 150Mbps ² , IEEE 802.11ac (5GHz): 325Mbps ² Access Point (Wi-Fi Direct): IEEE 802.11g (2.4GHz): 54Mbps ² , IEEE 802.11n (2.4GHz): 72.2Mbps ² , IEEE 802.11a (5GHz): 54Mbps ² , IEEE 802.11n (5GHz): 150Mbps ² , IEEE 802.11ac (5GHz): 325Mbps ² Infrastructure, Access Point (Wi-Fi Direct)
Supported Mode	Infrastructure: Open, WPA2/WPA3-PSK, WPA2/WPA3-EAP
Supported Security Type	Supported EAP Type: PEAP, PEAP-TLS, EAP-TLS, EAP-Fast Access Point (Wi-Fi Direct): WPA2-PSK (AES)
Wireless LAN (Using Optional ELPAP11)	
Supported Speed For Each Mode	Infrastructure: IEEE 802.11b (2.4GHz): 11Mbps ² , IEEE 802.11g (2.4GHz): 54Mbps ² , IEEE 802.11n (2.4GHz): 72.2Mbps ² , IEEE 802.11a (5GHz): 54Mbps ² , IEEE 802.11n (5GHz): 150Mbps ² , IEEE 802.11ac (5GHz): 325Mbps ² Access Point (Wi-Fi Direct): IEEE 802.11g (2.4GHz): 54Mbps ² , IEEE 802.11n (2.4GHz): 72.2Mbps ² , IEEE 802.11a (5GHz): 54Mbps ² , IEEE 802.11n (5GHz): 150Mbps ² , IEEE 802.11ac (5GHz): 325Mbps ² Infrastructure, Access Point (Wi-Fi Direct)
Supported Mode	Infrastructure: Open, WPA2/WPA3-PSK, WPA2/WPA3-EAP
Supported Security Type	Supported EAP Type: PEAP, PEAP-TLS, EAP-TLS, EAP-Fast Access Point (Wi-Fi Direct): WPA2-PSK (AES)
Operating Temperature³	
Single Use	Low Altitude: 0 – 2,286 m / 7,500 ft: 0 °C – 40 °C [32 °F – 104 °F] High Altitude: Over 2,286 m / 7,500 ft: 0 °C – 35 °C [32 °F – 95 °F] 20% to 80% Humidity, No Condensation Over 1,500 m / 4,921 ft with High Altitude Mode: 0 – 3,048 m (0 – 10,000 ft) Yes
Operating Altitude	
Direct Power On / Off	
Start-Up Period	
Quick Start-Up	
Cool Down Period	
Air Filter	
Type	Electrostatic Filter
Maintenance Cycle ⁴	20,000 hours (Normal) 100 – 240 V AC ±10%, 50/60 Hz
Power Supply Voltage	
Power Consumption (220 - 240V)	
Laser Diode On (Normal / Extended)	380W / 286W
Standby (Normal / Eco)	2.0W / 0.4W
Dimension Excluding Feet (D x W x H)	
Weight	341 x 695 x 145 mm Approx. 12.5kg
Fan Noise (Normal / Quiet)	35dB / 26dB

¹ Colour brightness (colour light output) and white brightness (white light output) will vary depending on usage conditions. Colour light output measured in accordance with IDMS 15.4; white light output measured in accordance with ISO 21118.
² Maximum speed and range is achievable when used with same enhanced mode technology. Actual data rates, features and performance may vary depending on your computer system, the environment and other factors.
³ When environmental temperature becomes high, the brightness becomes dark automatically.
⁴ When used in the general office environment (the amount of floating dust: 0.04 - 0.2 mg/m³). Based on the Epson's in-house test results.

EPSON INDIA PVT. LTD.
12th Floor, The Millennia, Tower A, No.1, Murphy Road, Ulsoor, Bangalore – 560 008. Tel: 080 4566 5000 Fax: 080 4566 5005

Regional Offices:
Ahmedabad 4037 0075, Chennai 3967 7500, Ernakulam 4012 315, Coimbatore 98942 19200, Hyderabad 4857 0032, Jaipur 4923 119, Kolkata 4603 4714/15/29/30, Mumbai 3079 8200, New Delhi 4107 3101, 4752 2414, Pune 3028 6000

Epson Helpline: For product info or service – 1800 425 0011
For service: 1800 123 001 600 or 1860 3000 1600 (9 am – 6 pm) (Mon – Sat)
Email: projector@eid.epson.co.in **www.epson.co.in**

Supplied Accessories

Power Cable: 4.5m, 3 wires
Remote Control with 2xAAA Battery
User Guide

Optional Accessories

Air Filter: ELPAF64
Document Camera: ELPDC21
Wireless Presentation System: ELPWP10, ELPWP20
Wireless LAN unit: ELPAP11
Setting Plate: ELPMB75
Ambient Light Rejecting (ALR) Screen: ELPSC35, ELPSC36

EB-810E



EXTREME SHORT THROW LASER PROJECTORS EB-810E

EPSON



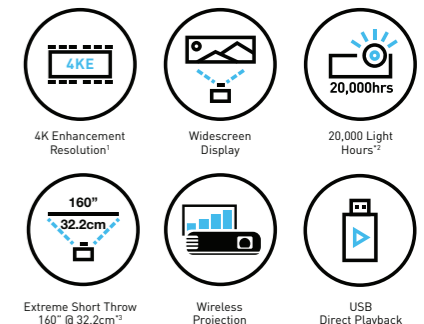
DEFY SPACE CONSTRAINTS WITH EXTREME SHORT THROW PROJECTION.



21:9 aspect ratio screen size. Visual for illustration purposes only.

Setting the new standard with extreme short throw projection in 4KE¹ resolution.

The innovative EB-810E projector from Epson features extreme short throw capabilities. Packed with user-friendly features, these projectors seamlessly enhance classroom learning, foster hybrid workspace collaborations, and elevate retail display presentations. Boasting an immersive 5,000 lumens on a stunning 21:9 widescreen, the EB-810E projector, equipped with 4K Enhancement technology¹, deliver unforgettable presentations. Notably, their extreme short-throw design not only ensures dynamic displays but also maximises space efficiency, making them the perfect choice for impactful big screen projections, even in smaller meeting rooms.



ENGINEERED FOR good

Extreme Short-Throw Projection

Presenting sharp and glare-free projections on a 21:9 widescreen display with minimal shadow interference.

4K Enhancement Technology¹

Delivering smooth and detailed picture quality at 5,000 lumens with 4K enhancement technology.

Ease of Installation

Digital image correction function for ease of installation on any surface for nearly any image size and aspect ratio.

¹ 4K Enhancement Technology shifts each pixel to surpass Full HD resolution on screen. *Source: Futuresource Consulting.
² Approximate time until brightness decreases 50% from first usage. Measured by acceleration test assuming use of 0.04 - 0.20 mg/m³ of particulate matter. Time varies depending on usage conditions and environments.
³ Wall to front of projector. 160-inch diagonal size is only available with 16:9 aspect ratio.



Epson Helpline: For product info or service – 1800 425 0011
For service: 1800 123 001 600 or 1860 3000 1600 (9 am – 6 pm) (Mon – Sat)
Email: projector@eid.epson.co.in

www.epson.co.in



21:9 aspect ratio screen size. Visual for illustration purposes only.



Up Close and Personal

Wide Aspect Ratio Screen with Brightness up to 5,000 Lumens

Compelling and Engaging

Enriching Your Learning Journey on a 160-inch Screen Only for 16:9 Aspect Ratio

Wide 21:9 Aspect Ratio*

Screen sizes are easily interchangeable according to your presentation needs. You can conveniently project up to 160 inches* diagonally without compromising on picture quality.

*The 21:9 aspect ratio is commonly used for video conferencing in hybrid workspaces.
^Up to 160" diagonal size is only for 16:9 aspect ratio.

High-Definition Images

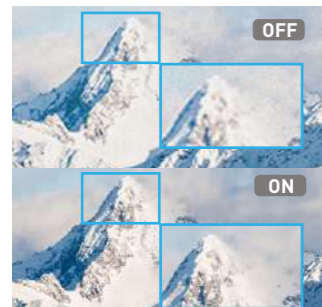
4K enhancement technology shifts each pixel diagonally, surpassing Full HD image quality to give you mesmerising visuals that transcend conventional size constraints for all your presentations.

Extreme Short Throw Lens

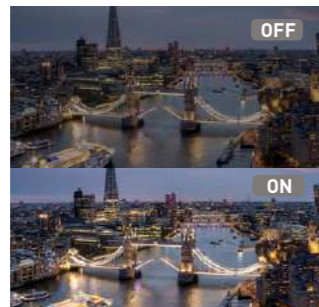
L-shape short throw lens with a spectacular throw ratio of 0.16 allows a 100-inch screen projection effortlessly with only a 9.8cm distance from the wall to the projector.

Obstruction-Free Viewing

Minimal shadows are formed on screen as light is not blocked by the presenter, allowing your audience to see sharp and detailed projections.



Super Resolution
Delivering good visibility, with photos and text both well balanced and sharp.



Scene Adaptive Gamma
Achieve optimal contrast effortlessly with automatic gamma level adjustment.

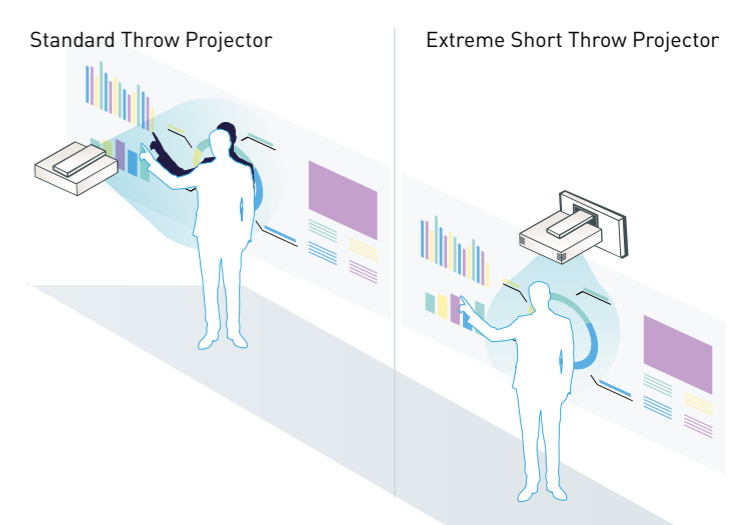


Frame Interpolation
A feature that delivers smoother and sharper motion pictures in every projection.



High Dynamic Range (HDR)*
Precise detailing for light and dark graduation contents.

*HDR+ is not supported.



Wake-Up Signal

Automatically turns on the projector when a video signal is detected.



User-Friendly Colour Mode

Dedicated preset settings for video conferencing.



Quality Sound

Powerful 16W (8W x 2) stereo speakers with clear voice and standard modes.



Digital Zoom

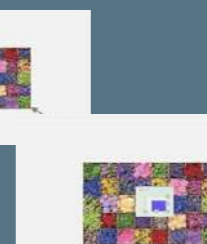


Image Shift



Screen Flexibility

Enjoy the flexibility to adjust the projector screen according to your needs.



Immersive Solution

Amplifying Creativity with Hassle-Free Connectivity

Direct Contents Playback

Conveniently play back images from a USB drive without the need for a computer or player. The multi-functional content manager also allows you to create playlists, convert files*, add effects, and set playlist schedules*, saving them on the USB drive conveniently.



*Only for Epson Projector Content Manager App.

Fuss-Free Connectivity Choices

Compatible with a wide range of external devices, the projector comes with additional ports including HDMI, HDBaseT and USB. Ideal for large venues, HDBaseT can transmit Full HD video, audio and Ethernet at low cost through Cat 5e/6 cables up to 100 metres.



The HDBaseT and the HDBaseT Alliance logos are trademarks of the HDBaseT Alliance.



Convenient Content Management

Epson Creative Projection App

For iOS

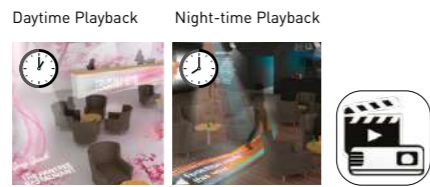
Create impressive custom content on your iPhone or iPad easily using the app's built-in templates and stamps.



Epson Projector Content Manager App

For Windows / Mac

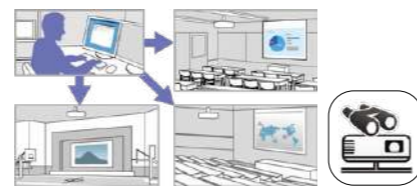
Conveniently add images and videos to playlists and save them onto an external storage device.



Epson Projector Management App

For Windows

Easy-to-use web-based solution for monitoring and controlling your networked projector fleet.



20,000 Maintenance-Free Hours

Epson's unique laser technology allows for 20,000 hours* of maintenance-free laser light source in the projector. Users can enjoy peace of mind and highly reliable performance, thanks to the innovative fixed phosphor unit, providing long-lasting durability to the device.



*No required maintenance for the light source for up to 20,000 hours. Approximate time until brightness decreases 50% from first usage. Measured by acceleration test assuming use of 0.04 - 0.20 mg/m3 of particulate matter. Time varies depending on usage conditions and environment. Replacement of parts other than the light source may be required in a shorter period.

Streamlined Set-Up And Installation

Wall Mount Advantage

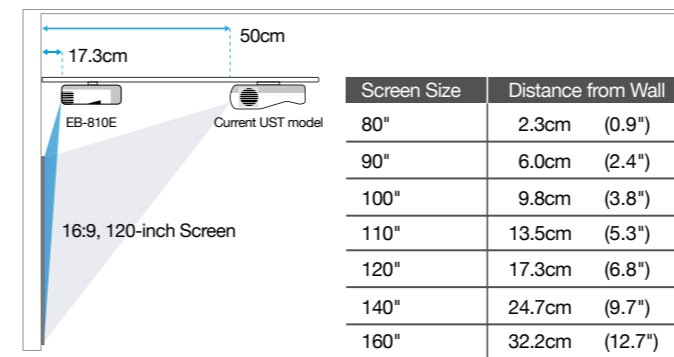
Experience expanded installation options with the EB-810E projector's extreme short-throw lens. Wall mount installation, facilitated by the dedicated wall mount (ELPMB75) and VESA support*, minimises shadows, ensuring an obstruction-free view for your audience.

*Also compatible with ELPMB22 and ELPMB30.

Desktop Installation Advantage

EB-810E stands out with its extreme short-throw capability, making desktop installation a breeze—an ideal solution for limited space, ensuring maximum screen size even in close proximity.

- Significant savings on installation cost against cabling, ceiling, and reinforcement works
- Fast and hassle-free installation



Epson Setting Assistant (ESA)

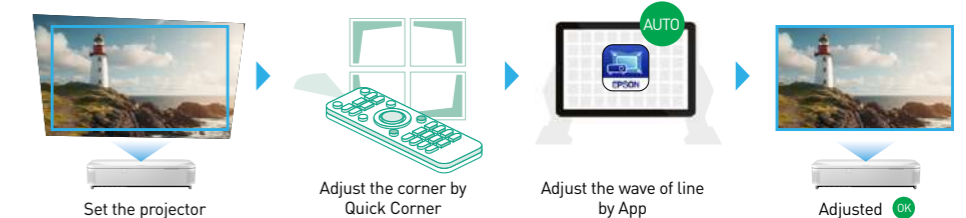
Effortlessly save time and manpower with the user-friendly Epson Setting Assistant (ESA) mobile app. Using your smartphone's camera, ESA automatically corrects the shape of the projected image, eliminating the need for tedious manual adjustments. Enjoy a fuss-free experience as ESA ensures precision without the hassle of continuous re-adjustments.



With "Screen"



Without "Screen"



Note: If you set the projector without screen, you need to adjust the projected display's shape to square manually. APP help to adjust the line to straight.

Wireless Connection

Screen Mirroring

Enjoy the freedom to share content wirelessly from multiple devices with the built-in screen mirroring function.



Epson iProjection App

Easily project images and files from various devices such as Windows, Mac OS, iOS, Android™ or Chromebook.



Unveil The True Colours

EPSON 3LCD PROJECTORS

1-CHIP PROJECTORS

True BRIGHTNESS

True COMFORT

True REALISM

Up to 3x Brighter Colours

No Rainbow Effect

3x Wider Colour Gamut



WHITE 3000 LUMENS
COLOUR 3000 LUMENS



LIGHT SOURCE PRISM



WIDER COLOUR RANGE



WHITE 3000 LUMENS
COLOUR 430 LUMENS**



LIGHT SOURCE ROTATING COLOUR WHEEL



SMALLER COLOUR RANGE

EPSON 3LCD PROJECTORS

1-CHIP PROJECTORS



Efforts to mitigate environmental impacts in manufacturing



Toyoshina plant in Japan

Epson becomes the Manufacturing Industry's First¹ to Switch to 100% Renewable Electricity at all sites² in Japan.

In November 2021, we achieved 100% renewable electricity at all domestic sites², Shinshu Green Electricity, CO₂-free value-added electric power produced locally in Nagano Prefecture using Nagano Prefecture hydroelectric power. This is both reducing Epson's GHG emissions³ and increasing consumption of locally produced energy.

Assembled⁴ using 100% renewable electricity

Epson announced that its worldwide group sites² will all meet their electricity needs from 100% renewable energy sources (renewable electricity) by 2023. We have achieved 100% renewable energy at our projector's manufacturing site in the Philippines by generating power with a rooftop mega-solar power plant and by switching to a mix of geothermal and hydroelectric power in January 2021.



Epson Precision (Philippines), Inc.



Over 80% recycled cardboard packaging

All carton box packaging of Epson's projectors are made by over 80% recycled cardboard.

1 Among Japanese companies that have joined the RE100. Per Epson research as of October 27, 2021.
2 Excludes leased properties of some sales sites, etc.
3 GHG (Greenhouse Gas), GHG scope 1, 2, 3 emission
4 Products assembled in the Philippines.