

ENGAGE

MAKE THE ORDINARY EXTRAORDINARY

Create engaging digital experiences that will make your retail space a more memorable destination. Think big — from larger-than-life video walls that draw in the crowd to smaller effects that make a big impression — like dynamic shelf talkers, product callouts, visual merchandising or elements of spatial design. Implement individualized applications, demonstrations and comparisons that will truly captivate customers and drive sales.

Elevate your brand and create an inviting space with contextual information projected on nearly any surface.

AND EXPERIENCE

ENDLESS POSSIBILITIES



GLASS



FLOOR



DISPLAY



OBJECT

THINK BIG

**BIG
SUMMER
SALE**

ALL YOUR
TRAVEL NEEDS
AWAIT INSIDE



TRANSITOTE
LUGGAGE AND ACCESSORIES

**FEATURED DESTINATIONS:
SPAIN | ITALY | FRANCE**

ROME ITINERARY

- Piazza Navona
- Spanish Steps
- Trevi Fountain
- Colosseum
- Vatican City
- Palatine Hill
- Pantheon

COLORS AVAILABLE



1

2

3

4

CAPTIVATE

1

2

3

4

NEW ARRIVALS

Matching Belts Sizes 32" to 60"

Half Sizes and Wide Widths Available

Additional Sizes and Colors Available

25% OFF
THIS WEEK ONLY

Also available in
Red, Blue and Brown

Belts

DRIVE SALES

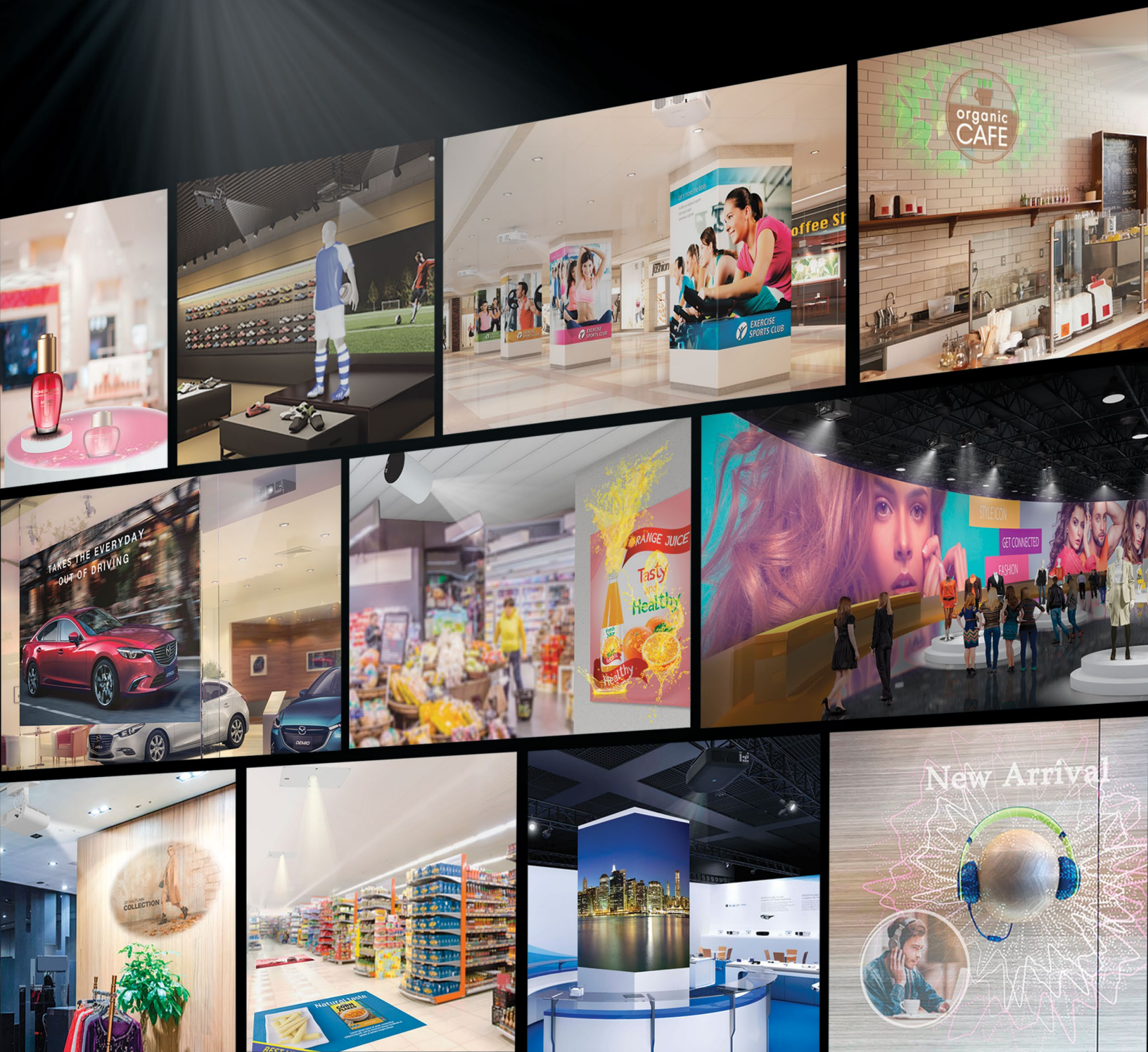


1

2

3

ENDLESS POSSIBILITIES



Why Epson® Projectors?

As a world leader in 3LCD projection technology, Epson continues to drive the future with a full suite of cutting-edge solutions that can be used for experiential digital signage. From large-scale fully immersive digital walls to dynamic shelf displays, we've got the tools to make it happen. With our expansive lineup of products, the possibilities are endless. And, with Epson projectors, you can count on extraordinary image quality, sophisticated software solutions as well as industry-leading service and support.

Contact Us to Learn More

Interchangeable Lens Projectors

Packed with state-of-the-art technology, Epson Pro Series projectors are ideal for bright, larger-than-life, wall-to-wall experiences, even in ambient light. They feature sophisticated software that enables easy pixel and color matching, as well as a collection of lenses and special tools for edge blending, curved-wall projection, projection mapping and more.

Accent Lighting Projectors

Sleek spotlight performers, these accent lighting laser projectors can illuminate virtually any surface or material, while unleashing dynamic, experiential content at the same time. They can affect retail spatial design, yet blend in with premium, upscale environments. Unique software, special filters, and customized templates enable them to display logos, graphics and information in a way that truly captivates.

Fixed Lens Laser Projectors

These portable powerhouse projectors deliver brilliant video, professional-grade reliability, and amazing value — all in a compact chassis. With a fixed lens and a host of innovative features, they're perfect for implementing affordable dynamic digital imaging.



For more information on elevating customer experiences with Epson digital signage projectors, visit www.epson.com/digitalsignage.

ABOUT EPSON

Epson is a global technology leader dedicated to becoming indispensable to society by connecting people, things and information with its original efficient, compact and precision technologies. The company is focused on driving innovations and exceeding customer expectations in inkjet, visual communications, wearables and robotics. Epson is proud of its contributions to realizing a sustainable society and its ongoing efforts to realizing the United Nations' Sustainable Development Goals.

Led by the Japan-based Seiko Epson Corporation, the worldwide Epson Group generates annual sales of more than JPY 1 trillion. global.epson.com

Epson America, Inc., based in Los Alamitos, Calif., is Epson's regional headquarters for the U.S., Canada, and Latin America. To learn more about Epson, please visit: epson.com. You may also connect with Epson America on Facebook (facebook.com/Epson), Twitter (twitter.com/EpsonAmerica), YouTube (youtube.com/epsonamerica), and Instagram (instagram.com/EpsonAmerica).
