

EPSON
EXCEED YOUR VISION

We understand
education

Because we
understand you

EPSON FOR EDUCATION



Technology designed to inspire and support the learning ecosystem.

A collaborative learning environment is easy to create and maintain, and costs less than you might think. It supports different ways to engage every kind of learner. All you need is technology that helps break conventional boundaries and make collaboration between teachers and students seamless.

This is where Epson comes in. We offer a wide range of easy-to-use, cost-effective products that bring learning to life. Powerful, durable, rich with features, and yet affordable, our products enhance the learning experience in a unique way, supporting the administrative backbone of your institution at the same time.

For Collaborative Learning, all you need is Epson.

KINDERGARTEN
SCHOOL
COLLEGE
UNIVERSITY
TRAINING

EPSON FOR EDUCATION

Cost-effective

Not just at the point of purchase, but throughout the product's lifetime.

Reliable

Superb quality results for education across the board.

Productive

Simplify everyday tasks and make work-life easy.

Easy to use

Engineered to be versatile, mobile and efficient.

Innovative

Stimulate imagination, encourage interaction and enhance learning.

We know what Education means to you

ADVANCED INTERACTIVE PROJECTORS

Easy to use and economical, Epson Ultra-Short-Throw Projectors produce vivid and natural images. Annotate and interact with content to transform teaching into a collaborative form of learning.



REVOLUTIONARY LOW-COST PRINTING

Epson InkTank Printers give you the lowest cost of printing at just 7 paise per print. Reliable high-volume printing reduces downtime, and provides high-quality results for both teachers and students.



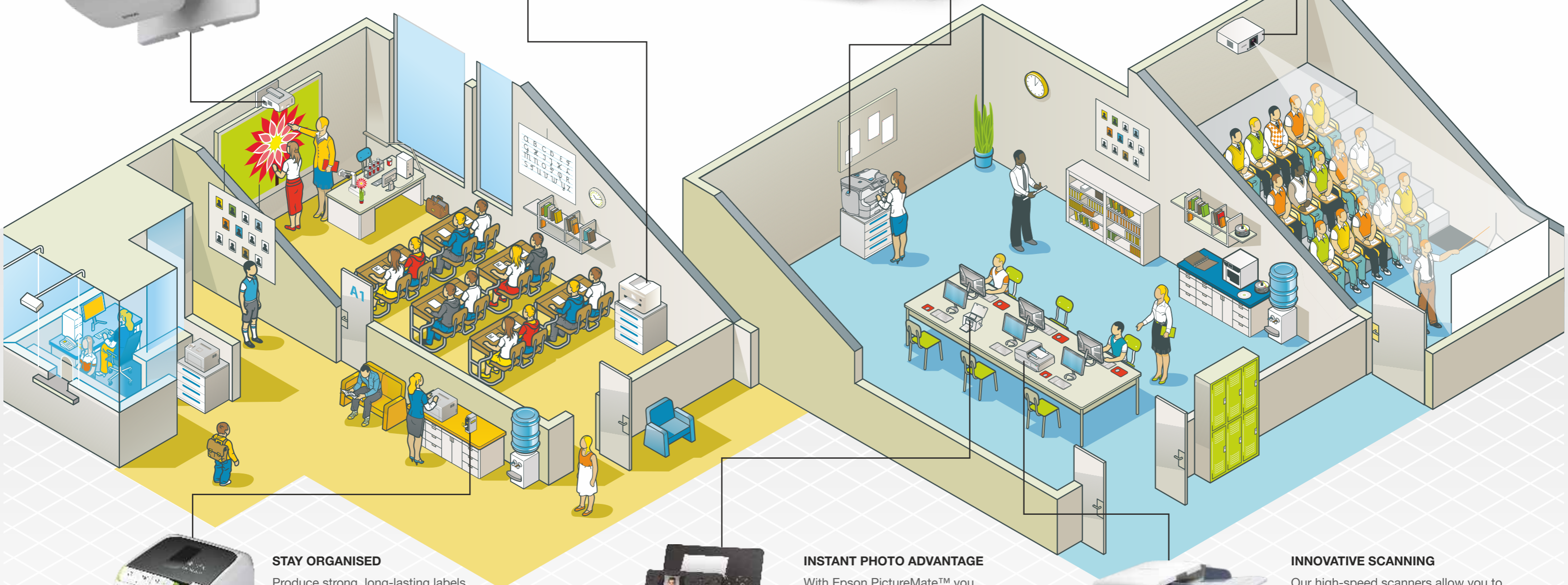
UNINTERRUPTED BACK-OFFICE PRINTING

The Epson WorkForce Pro RIPS printers are reliable and cost-efficient, delivering high-quality prints at just 30 paise (Black) and 75 paise (Colour), for a diverse range of documentation needs.



IMPACTFUL PROJECTION

Maximise the impact of your presentation with the exceptionally bright colours and high-resolution wide-screen format of our installation projectors. These projectors feature high-lumens for bright, colourful, brilliant images and bring into use advanced display technology.



STAY ORGANISED

Produce strong, long-lasting labels in a wide range of tapes and text colours to improve organisation. Ideal for office labelling, including storage, asset-tagging, filing and barcode printing.



INSTANT PHOTO ADVANTAGE

With Epson PictureMate™ you can print 10.2 mm x 15.2 mm (4R) photos in just 36 seconds. You can also preview and edit images with the 6.9 cm LCD screen.



INNOVATIVE SCANNING

Our high-speed scanners allow you to scan documents directly to your preferred storage system. You can also scan to a secure, password-protected PDF. These features boost productivity and help keep confidential data safe.



Your printing needs across the campus are many. The innovative Epson InkTank Printers give you low costs, high-volume reliability, incredible quality – all in one, with the ‘fill & forget’ convenience of affordable high-capacity ink bottles instead of traditional ink cartridges.

The Ultimate Freedom to Create and Share

INKTANK PRINTERS FOR OFFICE . CLASSROOMS
STAFF ROOMS . LABS

Printing without limits

- Invoices, account statements
- Multi-colour classroom projects with images
- Examination papers
- Attractive colour notices
- Letters, other administrative documents



*The total Colour CPP including black ink is 25 paise.



70 mL refill ink bottles starting at ₹299/-[†]



Low Total Cost of Ownership

- Low maintenance costs
- Low power consumption
- Long-lasting consumables
- Lowest printing cost – 7 paise for Black and 18 paise for Colour
- Easy compatibility with popular print management software



Double the print performance and print up to A3+ sizes with the all-in-one L1455

EPSON L SERIES for Colour . EPSON M SERIES for Monochrome

*Total Colour Cost Per Print - 18 Paise (CMY) + 7 Paise (K) = 25 Paise. Cost Per Print (CPP) is calculated based on quoted Page Yield for Black (4,500 pages) and Composite (Cyan/Magenta/Yellow - 7,500 Pages) ink bottles, and MRP of Epson genuine ink bottles. Quoted yields are based on the ISO 24711/24712 patterns of mixed text and colour graphics with Epson methodology. Quoted yields are based on the replacement ink bottles purchased. Part of the ink from the included bottles is used for printer startup so yields could be lower than those of replacement ink bottles. Actual yields vary due to reasons including images printed, print settings, temperature and humidity. Yields may be lower when printing infrequently or predominantly with one ink colour. Ink is used for both printing and printhead maintenance. All inks are used for both black and colour printing. Quoted CPP applicable for L130, L310, L380, L405 and L565.
†Source: IDC Asia Pacific Hardcopy Peripherals Tracker 2018 Q1. Volume and Value Market share of A4 Inkjet Printers and MFPs. †Prices are subject to change without prior notice.

WorkForce Pro RIPS Multi-function Printers are all about the revolutionary Replaceable Ink Pack System (RIPS), giving you years of uninterrupted printing. Filled with extraordinarily long-lasting DURABrite Ink, these printers limit energy costs and help maintain smooth printing operations.

Uninterrupted Back-Office Printing

LOW-COST HEAVY DUTY PRINTING FOR OFFICES, STAFF ROOMS AND LABS

- Low power usage, more productivity
- Rapid first page prints, faster jobs
- Minimum maintenance, conserved resources
- Super high-yield Replaceable Ink Packs
- Robust security features
- Share scans through email or store directly in cloud storage
- Password-enabled administrator settings

Ideal for

- High-volume printing
- Long-lasting documentation
- Printing confidential and critical information
- Full-colour reports and statements
- Printing question papers, OMR sheets, general documents and photo copying

30 PAISE BLACK	75 PAISE COLOUR
LOWEST PRINT COSTS	



Low power usage,
more productivity.



Get 50,000**
A4 size prints
with one ink change

Get A3+ prints and
print up to 86,000 pages[‡]
with the WF-C869R

*Maximum power consumption of up to 1.5 kW †Applicable only for black A4 prints. **Under standard test conditions

Whether in the classroom or the meeting room, using finger-touch or an interactive pen, Epson's Interactive Projectors make it easy to display and edit a wide range of content, annotate presentations in real-time, and to save and share collaborative work.

Enhanced Interactive Learning

INTERACTIVE PROJECTORS FOR CLASSROOMS . LABS . TRAINING



Encouraging active collaboration

- Take student interaction to a new level with real-time annotation and screen 'drawing' using interactive pens
- Use the moderator function to encourage students to share content while you facilitate what appears on screen
- Make the most of features that support collaboration across campuses and between educational partners



Finger-touch technology

- Students can use their fingers to annotate directly on screen, making lessons and lectures more engaging than ever before
- With responsive dual pens, teachers and students can interact together with projected images easily and intuitively



TURN ANY WALL OR TABLE INTO AN INTERACTIVE WHITEBOARD

World & India's **No.1** Projector

THE WORLD NO.1
17 YEARS RUNNING



*Compared against similarly-priced leading 1-chip DLP® business and education projectors based on NPD data from July 2011 through June 2012 (available at www.npd.com). Colour brightness (colour light output) measured in accordance with IDMS 15.4. Actual colour brightness will vary depending on actual usage conditions. 3LCD® is a registered trademark of Seiko Epson Corporation. DLP® is a registered trademark of Texas Instruments, Inc. and its use here does not imply any affiliation with or endorsement by them.

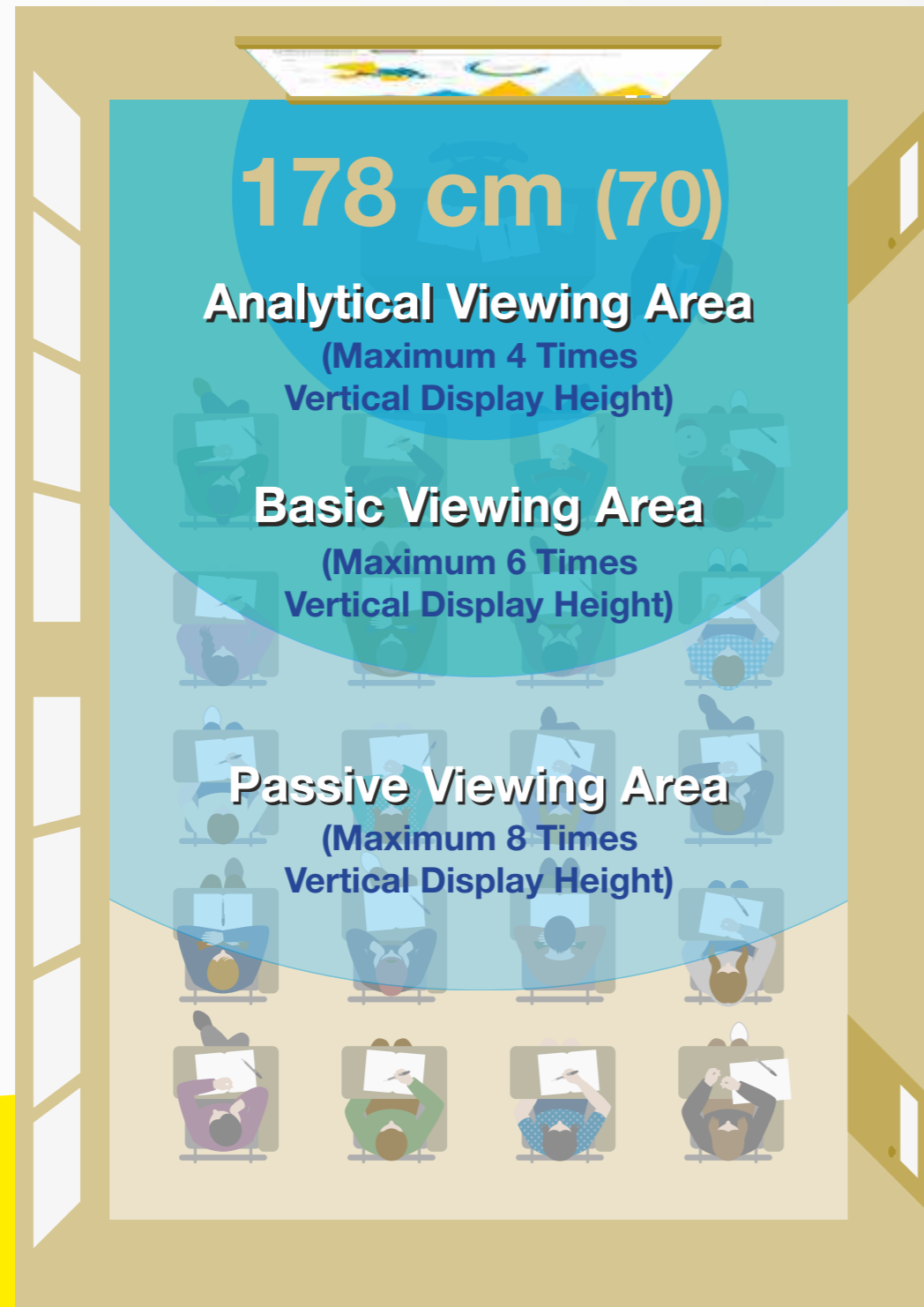
*Source: Futuresource Consulting.

Display Size Matters

2 key factors for selecting the right display size for classrooms

- Potential size of the display
- Distance from which the students are viewing the display

Display size in the classroom matters. The larger the screen size, the better. In any given classroom configuration, choosing a smaller display results in significant reduction in the quality of educational experience. Larger displays have proven to be more impactful for students to learn and retain better.



Display size and viewing distance depend on the physical attributes of the space. The 4/6/8 rule typically talks about 3 types of viewing experience:

Analytical Viewing

Students are fully engaged and can make critical decisions with the ability to analyse details within the displayed image.

Charts and Web Content Browsing

Basic Viewing

Students can make basic decisions from the displayed image. Fonts used are usually larger and intended for a group to view.

Presenting Multimedia Curriculum, Teacher and Student Whiteboarding

Passive Viewing

Students are able to recognize what images are on display and can separate text or the main images from the background.

Movies and Videos





It's never easy to hold the attention of students, parents or seminar participants for long periods. Epson's wide range of Multimedia Projectors are designed for large auditoriums, lecture halls, and even smaller meeting rooms, for high-performance impact.

Impactful Projection

PROJECTORS FOR AUDITORIUMS . MEETING ROOMS



Brilliant, captivating images

- Proprietary 3LCD technology delivers vibrant images, rich colours and smoother tones
- 3X brighter colours, and equal colour and white brightness



For films, events and presentations

- Dazzling HD quality for the best visual experience, in true widescreen format
- Differences in brightness from image to image can result in loss of detail; Epson's Auto Iris feature changes that by offering an incredible contrast ratio, automatically adjusting images for optimal clarity
- Connect to almost any source effortlessly, including live camera feed and cable TV, with multiple connectivity options – USB, HDMI and WiFi



THE WORLD AND INDIA'S NO.1 PROJECTOR FOR 17 YEARS IN A ROW

*Compared against similarly-priced leading 1-chip DLP® business and education projectors based on NPD data from July 2011 through June 2012 (available at www.npd.com). Colour brightness (colour light output) measured in accordance with IDMS 15.4. Actual colour brightness will vary depending on actual usage conditions. 3LCD® is a registered trademark of Seiko Epson Corporation. DLP® is a registered trademark of Texas Instruments, Inc. and its use here does not imply any affiliation with or endorsement by them.

Source: Futuresource Consulting.

Smart design

- Both portable and ceiling mounted projectors can be maintained easily, without the hassle of reinstallation
- Low noise levels
- Split-screen feature allows display of two different sources side-by-side on the same screen simultaneously; great for comparisons

UP TO 3X BRIGHTER COLOURS³



Every academic year brings with it large volumes of critical paperwork to handle and file away. Reliable Epson Document Scanners scan, store and organise documents easily and swiftly.

eDocument Everything.

DOCUMENT SCANNERS FOR OFFICE . STAFF ROOMS



Convenient and easy

- Four one-touch buttons mean that you can scan, copy, share and turn your photos and documents into multi-page searchable PDFs at the push of a button
- Scan directly to cloud storage services such as SugarSync and Evernote or your institution's page on Facebook and Picasa



Fast, high-quality results

- Thanks to Epson's ReadyScan LED Technology, you can start scanning instantly – no warm-up time is required
- Your scanned documents will look great as they come with a range of enhancement features

Ideal for

- Application forms
- Certificates and Reports
- Student Records
- Project Reports
- Course Material
- Office Documents



Ultra-compact and tidy

- A single Micro USB reduces power and connectivity cable clutter, keeping the workspace tidy
- A built-in stand for flexible scanning



Efficiency is being able to find what you want easily, whenever you want it. Our label printers enable you to do much more than that. Be it filing a document, tagging an object in the classroom or more.

Stay Organised.

LABEL PRINTERS FOR OFFICE . STAFF ROOMS



Total control

Easily print full-colour labels, tickets and tags – where and when you need them and in the quantities you actually use.

Enhanced visibility

Make your possessions stand out with high-quality, eye-catching colour labels.

Improved inventory management

Eliminate the stock of pre-printed labels, minimise label waste and production downtime, and prevent loss of records.



360°

SMART DOCUMENTATION MANAGEMENT MADE AFFORDABLE

Make memories from school and college last forever with the Epson PictureMate. It's the easiest way to instantly produce photo albums and passport photos.

Instant Photos

PHOTO PRINTERS FOR SPECIAL EVENTS AND RECORDS

Quick and easy

- Lab-quality borderless photos, up to 12.7 cm x 17.8 cm (5R)
- Print up to 15.2 cm x 20.3 cm size photos
- Print a 4R photo in just 36 seconds**
- Print with WiFi Direct, or print directly from a digital camera or memory card

Convenient features

- 6.9 cm LCD colour photo viewer allows you to preview, remove red eye and enhance photos
- Connect seamlessly with Wifi, Wifi Direct and Epson iPrint™
- Comes with PictBridge, USB direct and built-in memory card slot



**CAPTURING
MOMENTS
FOR EVERYONE**

**Under standard test conditions

Epson is a global leader in digital imaging technology solutions, and is part of the USD 9.6 billion Seiko-Epson Corporation, Japan.

At the heart of the company is a directive – to create easy-to-use, cutting-edge solutions that help people, institutions and businesses 'exceed their vision'.

In India, Epson has over 330 service centres across 252 cities and towns.





EPSON INDIA PVT. LTD.

12th Floor, The Millenia, Tower A, No.1, Murphy Road,
Ulsoor, Bangalore - 560 008. Tel: 080-3051 5000 Fax: 080-3051 5005

Ahmedabad 3314 8500/01

Chennai 3967 7500

Cochin 4012 315

Coimbatore 98942 19200

Hyderabad 6463 9640/41

Jaipur 96808 52132

Kolkata 6500 9370/77

Mumbai 3079 8200

New Delhi 3312 0300/01

Pune 3028 6000/05

www.epson.co.in

Follow us on:  |  | 