

EFFORTLESS SCANNING FOR AN OPTIMAL DIGITAL STORAGE SOLUTION.



Optimise Business Efficiency with Fast and Flexible Document Scanning.

The Epson WorkForce DS-1730 and DS-1760WN document scanners optimise business workflows with fast scanning speeds and efficient digital storage. Their compact design maximises workspace, while versatile media handling offers flexible solutions to meet diverse business needs. Designed with sustainability in mind, these scanners are made with up to 30% recycled plastic*, reducing environmental impact.



Scan up to A4 /
Legal



30 ppm / 60 ipm
Scan Speed



One-pass
Duplex Scanning



Wi-Fi /
Wi-Fi Direct[^]



Ethernet[^]



Environmentally
Friendly

ENGINEERED FOR good

Built for Business

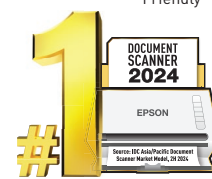
Enjoy fast scan speeds of up to 30 ppm and an ADF paper capacity of up to 60 sheets to enhance business productivity.

Effortless Scanning

Work becomes seamlessly easy with effortless scanning of various media types, including ID cards and even passports.

PC-less Operation with ScanWay[^]

Simplify your workflow by sending data directly to network folder, email, cloud or USB drive from the scanner control panel without using a PC.



* Up to 30% recycled plastic is used in the production of the main unit, with the ratio depending on the availability of raw materials. This percentage refers to the weight of recycled plastic used in the exterior parts, relative to the total plastic weight.

[^] For DS-1760WN only.

The Epson WorkForce DS-1730/DS-1760WN document scanner is a compact, versatile solution that streamlines workflows for both individuals and businesses, offering fuss-free connectivity, efficient digital storage and the ability to scan a variety of media and documents.



Versatile Scanning Solution for Businesses

Fast and Efficient Scanning

The DS-1730/DS-1760WN offers fast scanning speeds of up to 30 ppm / 60 ipm, significantly enhancing office productivity. It also features a 60-sheet ADF, providing convenient and efficient scanning capabilities.



Simple and Intuitive Operation

Designed for effortless operation, the scanner features an intuitive 6 cm (2.4") LCD touch screen (DS-1760WN) and a one-pass duplex scan feature, enabling quick scans and streamlining workflows.



Versatile Media Scanning

The DS-1730/DS-1760WN offers flexible scanning options to suit a variety of business needs. The ADF is ideal for high-volume scanning of mixed-size documents, long paper and originals ranging from 50–120 g/m² in thickness. For more delicate items such as photos, ID cards, booklets or documents that cannot be fed through the ADF, the flatbed provides a reliable alternative.



Document Management

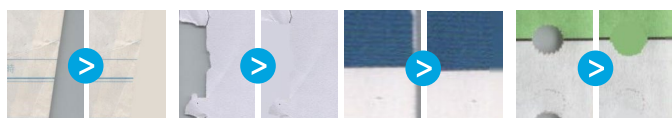
Epson Scan 2

Text Enhancement

Improves text recognition when scanning text documents, whether in colour, greyscale or black-and-white. Removes background for better clarity, making double-sided printed documents clearer.

Document Edge Corrections Only When Using ADF Scan

Correct and patch up missing edges or corners of the documents that are folded or torn with the colour of the original document. Punch holes can also be removed to enhance the overall aesthetics of the scanned image.



Folded edge

Paper tear

Border shadow

Punch hole

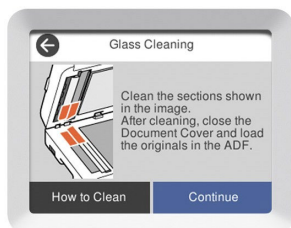
User-friendly Features

PC-less Operation with Scan-to Features DS-1760WN Only

Simplify your scan workflow by operating on the scanner control panel. Send scanned image directly to network folder, email, cloud service or USB drive without the use of a computer. This also improves data security since no data is stored on the computer.

Image Sensor Glass Dirt Detection

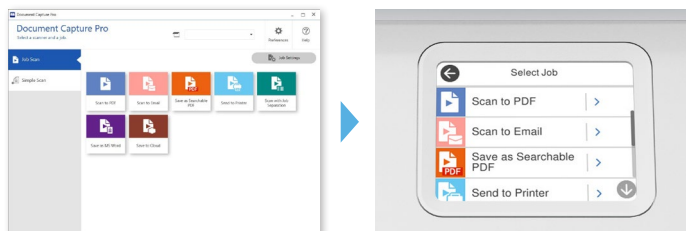
Receive notification on the computer screen or LCD screen (DS-1760WN) upon detection of dirt on the glass surface inside the scanner. This reduces the risk of re-scanning due to poor image quality.



Document Capture Pro



Automate your scanning workflow with up to 30 customisable scan jobs and assign them to the device panel. Convert documents into searchable PDF files or editable Office documents with built-in OCR capability. Documents can be named and sorted into different folders conveniently by various job separation methods. You can also capture text and barcode information from documents including Machine Readable Zone (MRZ) of travel documents and output them as index data. Send your scanned image to a wide variety of destinations including cloud storage services.



Note: Limited functionality for Mac version of Document Capture software.

Free Stop Hinge

The free stop hinge allows the lid to be opened at an angle between 15 to 70 degrees without support, enhancing usability.

Automatic Cropping of Multiple Originals at Once

Effortlessly scan multiple items of different sizes simultaneously. The scanner driver automatically detects, crops and saves each item as separate files or images to a designated folder, reducing the time spent on scanning tasks and enhancing productivity.

Continuous Scanning Using ADF and Scanner Glass

Scan different types of documents from both the ADF and the scanner glass in a single scan, and easily combine them into a single file. This feature enhances efficiency, offers flexibility in document handling and ensures all your scanned images are conveniently stored together.

Lower Environmental Impact

The main body of the WorkForce DS-1730/1760WN is made with **up to 30%* recycled plastic**, while not compromising on the compact size and performance of the scanner. This makes it an environmentally friendly choice for businesses.

*Up to 30% recycled plastic is used in the production of the main unit, with the ratio depending on the availability of raw materials. This percentage refers to the weight of recycled plastic used in the exterior parts, relative to the total plastic weight.



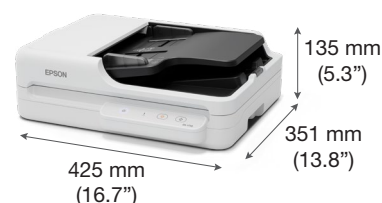
SPECIFICATIONS

MODEL NUMBER	DS-1730	DS-1760WN
SKU Code	B11B273502	B11B274502
Scanner	A4 Flatbed Colour Image Scanner with ADF	
Scanner Type	Contact Image Sensor (CIS) x 2	
Sensor Type	Flatbed: Fixed document and moving carriage	
Scanning Method	ADF: Fixed carriage and moving document	
Light Source	RGB LED x 2	
Optical Resolution ¹	Flatbed: 1,200 x 1,200 dpi	
Output Resolution	ADF: 600 x 600 dpi	
Bit Depth	50 – 1,200 dpi (in 1 dpi increments)	
Colour	30-bit input, 24-bit output	
Grayscale	10-bit input, 8-bit output	
Black & White	10-bit input, 1-bit output	
Document Size	ADF: 105 x 148 mm	
Minimum	Flatbed: 215.9 x 297 mm	
Maximum	ADF: 215.9 x 3,048 mm Flatbed: 215.9 x 297 mm	
Supported Paper Weight	ADF: 215.9 x 3,048 mm ADF: 215.9 x 5,588 mm	
ADF Capacity	50 – 120 g/m ²	
Daily Scan Volume	60 sheets (80 g/m ²)	
File Format	Up to 3,000 sheets / day	
Interface	Epson Scan 2: JPEG, TIFF, Multi-TIFF, PDF, Searchable PDF, BMP, PNG	
Scan to Destinations	Document Capture Pro (Windows): JPEG, JPEG2000, BMP, PDF, Searchable PDF, TIFF, Multi-TIFF, PNG, DOCX, XLSX, PPTX	
USB Host Function	USB 2.0	
Type of Devices	USB 2.0, Ethernet (1000BASE-T/100BASE-TX/10BASE-T), Wi-Fi (IEEE 802.11b/g/n), Wi-Fi Direct (max 8 connections), USB 2.0 Host	
Function	Computer (Document Capture Pro), Network Folder/FTP, Email, USB Drive, Cloud (Epson Connect), Computer (WSD)	
File Format	Memory Devices	
Scanning Speed ²	Scan to Memory Device	
Flatbed (A4, Colour/Monochrome)	JPEG, TIFF, Multi-TIFF, PDF, PDF/A	
300 dpi	7 sec	
600 dpi	15 sec	
ADF (A4, Colour/Monochrome)		
300 dpi	30 ppm / 60 ipm	
600 dpi	5 ppm / 10 ipm 5.5 ppm / 11 ipm	
Drivers and Software		
Supported OS (Scanner Driver)	Windows 7 / 8 / 8.1 / 10 / 11, Server 2008 / 2012 / 2016 / 2019 / 2022 or later	
Windows	Mac OS X 10.9.5 or later, macOS 11 or later	
Mac	Apple AirPrint, Mopria, Chrome OS	
Driverless Solutions (DS-1760WN only)	TWAIN, SANE, WIA, ICA, ISIS	
Driver Compatibility	Epson Scan 2	
Bundled Software	ISIS Driver (Web Download)	
Software Solutions Compatibility	Epson Scan OCR Component	
Control Panel	Epson Scan PDF Extensions	
LCD Screen	Document Capture Pro (Windows)	
Electrical Specifications	Document Capture (Mac)	
Rated Voltage	Epson Device Admin	
Rated Frequency	Epson Smart Panel (DS-1760WN only)	
Power Consumption	AC 220 – 240 V	
Operating	50 – 60 Hz	
Ready Mode	9.0 W	
Sleep Mode	3.8 W	
Power Off	0.9 W	
Environmental Conditions	10.0 W (USB), 11.0 W (Wi-Fi/Ethernet)	
Temperature	4.7 W (USB/Wi-Fi), 4.6 W (Ethernet)	
Operating	1.0 W (USB), 1.3 W (Wi-Fi), 1.1 W (Ethernet)	
Storage	0.1 W	
Humidity		
Operating	5 – 35°C	
Storage	-25 – 60°C	
Operating	15 – 80 % (No condensation)	
Storage	15 – 85 % (No condensation)	

Dimensions & Weight

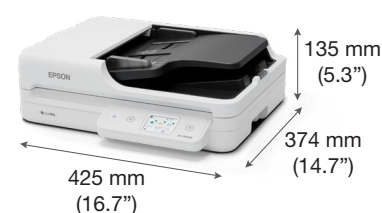
DS-1730

Weight: 4.8 kg (10.6 lb)



DS-1760WN

Weight: 4.9 kg (10.8 lb)



What's in the box?

- Scanner Main Unit
- USB 2.0 Cable
- Power Cable
- Setup Guide
- Warranty Card

© 2025 Epson India Pvt. Ltd. All Rights Reserved. Reproduction in part or in whole, without the written permission from Epson, is strictly prohibited. EPSON is registered trademark of Seiko Epson Corporation. All other products names and other company names used herein are for identification purposes only and are the trademarks or registered trademarks of their respective owners. Epson disclaims any and all rights in those marks. Print samples shown are simulations only. Specifications and product availability are subject to change without notice and may vary between countries. Please check with local Epson offices for more information.

Apple, iPad and iPhone are trademarks of Apple Inc., registered in the U.S. and other countries. App Store is a service mark of Apple Inc.

Android is a trademark of Google Inc.

Dealer's Stamp

Information correct as of June 2025.

EPSON INDIA PVT. LTD.

11th Floor, Godrej Centre, Hebbal, Survey No.26, Bellary Road, Sahakar Nagar, Byatarayanapura, Bangalore 560 092, Karnataka. Tel: 080 6939 5000 | Fax: 080 6939 5005

Regional Offices:

Ahmedabad 4037 0075, Chennai 4905 5177, Coimbatore 98942 19200, Ernakulam 4012 315, Hyderabad 4857 0032, Jaipur 4923 119, Kolkata 4603 4714/15/29/30, Mumbai 3079 8200, New Delhi 4107 3101, 4752 2414, Pune 2998 0641



Epson Helpline: For product info or service- 1800 425 0011
For service: 1800 123 001 600 or 1860 3000 1600 (9 am - 6 pm) (Mon- Sat)
Email: scanner@eid.epson.co.in

www.epson.co.in