

# RS3

## Folding rotating arm enables large working area in limited space

- 350mm arm has effective reach of 494mm in four directions
- All-direction access for greater freedom in workcell layout
- Enables use of large pallets without requiring large robot installation footprint



| Model Number     | RS3 - 351 S - UL |
|------------------|------------------|
| Payload          | 3kg              |
| Arm length       | 350mm            |
| UL specification | UL specification |
| Environment      | Environment      |
| Joint #3 stroke  | Joint #3 stroke  |

## Specifications

| Model number                                       | RS3-351□   |
|--|--|
| Arm length   | Arm #1, #2 350 mm  |
| Payload  | Rated 1 kg<br>Maximum 3 kg   |
| Repeatability                                      | Joints #1, #2 ±0.01 mm<br>Joint #3 ±0.01 mm<br>Joint #4 ±0.01 deg          |
| Standard cycle time <sup>*1</sup>                  | 0.34 sec   |
| Max. operating speed                               | Joints #1, #2 6237 mm/sec<br>Joint #3 1100 mm/sec<br>Joint #4 2600 deg/sec |
| Joint #4 allowable moment of inertia <sup>*2</sup> | Rated 0.005 kg·m <sup>2</sup><br>Maximum 0.05 kg·m <sup>2</sup>            |
| Joint #3 down force                                | 150 N  |
| Installation environment                           | Standard/Cleanroom <sup>**</sup> & ESD                                     |
| Mounting type                                      | Ceiling  |
| Weight (cables not included)                       | 17 kg  |
| Applicable controller                              | RC700-A  |
| Installed wire for customer use                    | 15 Pin (D-Sub)   |
| Installed pneumatic tube for customer use          | Φ6 mm x 2, Φ4 mm x 1: 0.59 MPa (6 kgf/cm <sup>2</sup> ) (86 psi)           |
| Power  | AC200-240 V Single phase   |
| Power consumption <sup>*4</sup>                    | 1.2 kVA  |
| Cable length                                       | 3 / 5 / 10 / 15 / 20 m   |
| Safety standard <sup>*5</sup>                      | CE, UKCA, KCs, UL  |

<sup>\*1</sup>: Cycle time based on round-trip arch motion (300mm horizontal, 25mm vertical) with 1kg payload (path coordinates optimized for maximum speed).

<sup>\*2</sup>: When payload center of gravity is aligned with Joint #4. If not aligned with Joint #4, set parameters using INERTIA command.

<sup>\*3</sup>: Complies with ISO Class 3 (ISO 14644-1) and older Class 1 (less than 10.0 l/m particles per 28.317cm<sup>3</sup> (1cf)) cleanroom standards.

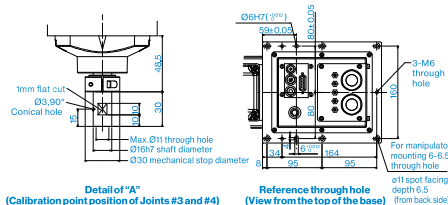
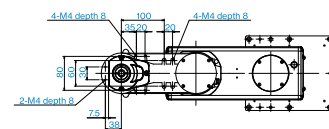
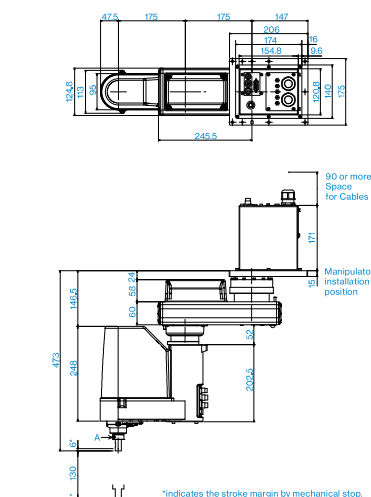
<sup>\*4</sup>: Varies according to operating environment and program.

<sup>\*5</sup>: Please contact us for the compatibility status of each model.

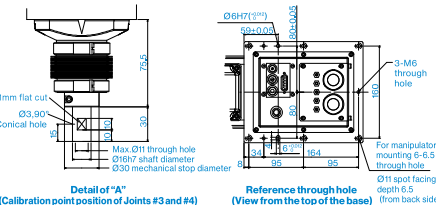
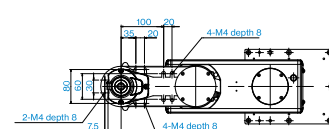
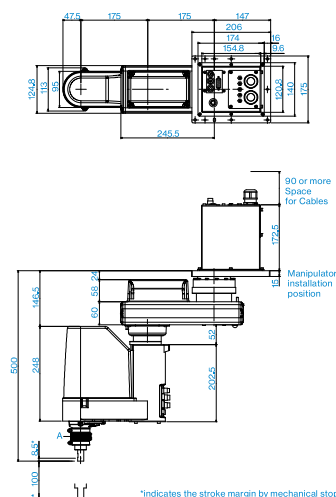
## Outer Dimensions (Ceiling Mounting)

[Unit: mm]

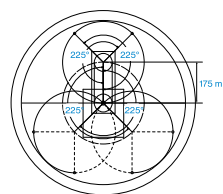
### Standard-model



### Cleanroom-model



## Motion Range (Ceiling Mounting)



| Model                     | RS3-351□ |
|---------------------------|----------|
| Arm #1 Length (mm)        | 175      |
| Arm #2 Length (mm)        | 175      |
| Joint #1 Motion range (°) | ±225     |
| Joint #2 Motion range (°) | ±225     |