

SPECIFICATIONS

MODEL NUMBER		EB-L730U	EB-L630SU
SKU Number		V11HA25056	V11HA29056
Projection Technology			
Specifications of Main Parts			
LCD	Size	1.70 cm (0.67") (C2 Fine)	
	Resolution	WUXGA	
	Aspect Ratio	16:10	
Projection Lens	Type	Optical Zoom (Manual) / Focus (Manual)	
	F-Number	1.50 – 1.70	No optical zoom / Focus (Manual)
	Focal Length	20 – 31.8 mm	1.70
	Zoom Ratio	1.0 - 1.60	11.76 mm
	Throw Ratio	1.35 – 2.20 (Wide - Tele)	1.0 - 1.35 (Digital Zoom)
Lightsource	Type	Laser Diode	
	Life	20,000 hours (Normal) / 30,000 hours (Extended)	
	0.80 – 1.07 (Wide - Tele)		
Screen Size (Projected Distance)			
Zoom: Wide	50" - 500" [1.44 - 14.76 m]		50" - 200" [0.85 - 3.49 m]
Zoom: Tele	50" - 500" [2.35 - 23.84 m]		N/A
Brightness ¹			
White Light Output (Normal / Extended)	7000 lm / 4900 lm		6000 lm / 4200 lm
Colour Light Output (Normal)	7000 lm		6000 lm
Light Output (Center) ²	7400 lm		6300 lm
Contrast Ratio			
		Over 50,00,000:1	
Internal Speaker(s)			
Sound Output	10 W Monaural		
Keystone Correction			
Projection Orientation	360° Free		
Vertical / Horizontal	± 30° / ± 30°		
Connectivity			
Analog RGB Input	D-Sub 15Pin	2	
	HDMI	2 (HDCP 2.3)	
Digital Input	HDBaseT	1 (HDCP 2.3)	
	Stereo Mini Jack	2	
Audio Input	USB Type A	2 (Port 1 for PC Free, Firmware Update, Copy OSD Settings; Port 2 for 5V/2A power supply only, no USB function)	
USB Input	USB Type B	1 (For Mouse, Keyboard, Control, Firmware Update)	
	RS-232C	D-Sub 9Pin x 1	
Control I/O	D-Sub 15Pin	1	
Analog Video Output	HDMI	1 (HDCP 2.3)	
Digital Video Output	Stereo Mini Jack	1	
Audio Output	Wired LAN	RJ45 x 1 (100 Mbps)	
Network	Wireless	Built-in	
Wireless LAN (In-Built) and Screen Mirroring			
Supported Speed for Each mode		Infrastructure: IEEE 802.11b (2.4 GHz): 11 Mbps ³ , IEEE 802.11g (2.4 GHz): 54 Mbps ³ , IEEE 802.11n (2.4 GHz): 72.2 Mbps ³ , IEEE 802.11a (5 GHz): 54 Mbps ³ , IEEE 802.11n (5 GHz): 150 Mbps ³ , IEEE 802.11ac (5 GHz): 325 Mbps ³ Access Point (Wi-Fi Direct): IEEE 802.11g (2.4 GHz): 54 Mbps ³ , IEEE 802.11n (2.4 GHz): 72.2 Mbps ³ , IEEE 802.11a (5 GHz): 54 Mbps ³ , IEEE 802.11n (5 GHz): 150 Mbps ³ , IEEE 802.11ac (5 GHz): 325 Mbps ³	
Supported Mode	Infrastructure, Access Point (Wi-Fi Direct)		
Supported Security Type	Infrastructure: OPEN (WPA2/WPA3-PSK/ WPA2/WPA3-EAP) Supported EAP Type: PEAP, PEAP-TLS, EAP-TLS, EAP-Fast Access Point (Wi-Fi Direct): WPA2-PSK (AES)		
Wireless LAN (Using Optional ELPAP11)			
Supported Speed for Each mode		Access Point (Wi-Fi Direct): IEEE 802.11g (2.4 GHz): 54 Mbps ³ , IEEE 802.11n (2.4 GHz): 72.2 Mbps ³ , IEEE 802.11a (5 GHz): 54 Mbps ³ , IEEE 802.11n (5 GHz): 150.0 Mbps ³ , IEEE 802.11ac (5 GHz): 325 Mbps ³ Access Point (Wi-Fi Direct)	
Supported Mode	Access Point (Wi-Fi Direct): WPA2-PSK (AES)		
Operating Temperature			
Single Use	Low Altitude (0 - 2286 m / 7500 ft): 0 - 45°C <32 - 113°F> High Altitude (Over 2286 m / 7500 ft to 3048 m / 10,000 ft): 0 - 40°C <32 - 104°F> 20% - 80% Humidity (No Condensation)		
Multi-projection Use	Low Altitude (0 - 2286 m / 7500 ft): 0 - 40°C <32 - 104°F> High Altitude (Over 2286 m / 7500 ft to 3048 m / 10,000 ft): 0 - 35°C <32 - 95°F> 20% - 80% Humidity (No Condensation)		
	Over 1500m / 4921 ft with High Altitude Mode: 0 - 3048 m (0 -10,000 ft)		
Operating Altitude			
Direct Power On / Off	Yes		
Start-Up Period	8 seconds (Epson Logo); Warm-up Period: 30 seconds		
Quick Start-Up	Less than 5 seconds (Display)		
Cool Down Period	Instant Off		
Air Filter	Type	Electrostatic Filter	
	Maintenance Cycle ⁴	20,000 hours (Normal) / 30,000 hours (Extended)	
Power Supply Voltage			
100 - 240 V AC ±10%, Frequency: 50/60 Hz			
Power Consumption (220 - 240V)			
Laser Diode On (Normal / Extended)	345 W / 258W		
Standby (Normal / Eco)	2.0W / 0.3W		
Dimension Excluding Feet (D x W x H)			
304 x 440 x 122 mm			
Weight	Approx. 8.4 kg		Approx. 8.4 kg
Fan Noise (Normal / Eco)			
38 dB / 27 dB			

¹ Colour brightness (colour light output) and white brightness (white light output) will vary depending on usage conditions. Colour light output measured in accordance with IDMS 15:4; white light output measured in accordance with ISO 21118.

² This light output value is measured at the center of the screen as a reference value which is equivalent to lumens. There is no official standard for Light Output (Center) measurements and this measurement is made based on the method set by Epson. Please note, each manufacturer measures Light Output (Center) independently according to their own methods and therefore it is recommended to refer to Color Light Output measured in accordance with IDMS 15.4 and White Light Output measured in accordance with ISO 21118 when selecting and comparing projectors.

³ These modes and actual data throughputs depend on supported wireless mode of source devices and/or environment conditions.

⁴ When used in the general office environment (the amount of floating dust: 0.04 - 0.2 mg/m³). Based on the Epson's in-house test results.

EPSON INDIA PVT. LTD.
11th Floor, Godrej Centre, Hebbal, Survey No. 26,
Bellary Road, Sahakar Nagar, Byatarayanapura,
Bangalore 560 092, Karnataka.
Tel: 080-6939 5000 Fax: 080-6939 5005

Regional Offices:
Ahmedabad 4037 0075, Chennai 4905 5177, Coimbatore 98942 19200, Ernakulam 4012 315,
Hyderabad 4857 0032, Jaipur 4923 119, Kolkata 4603 4714/15/29/30, Mumbai 3079 8200,
New Delhi 4107 3101, 4752 2414, Pune 2998 0641

- Supplied Accessories**
Power Cable: 3m
HDMI Cable: 1.8m
Remote Control: Yes, with Alkaline AA Battery
Cable cover
User Guide
- Optional Accessories**
Air Filter: ELPAF56
HDBaseT Transmitter: ELPHD02
Safety Wire Set: ELPWR01

EB-L730U



EB-L630SU



© 2025 Epson India Pvt. Ltd. All Rights Reserved.
Reproduction in part or in whole, without the written permission from Epson, is strictly prohibited. EPSON is registered trademark of Seiko Epson Corporation. All other products names and other company names used herein are for identification purposes only and are the trademarks or registered trademarks of their respective owners. Epson disclaims any and all rights in those marks. Print samples shown are simulations only. Specifications and product availability are subject to change without notice and may vary between countries. Please check with local Epson offices for more information.

Apple, iPad and iPhone are trademarks of Apple Inc., registered in the U.S. and other countries. App Store is a service mark of Apple Inc.

Android is a trademark of Google Inc.

Dealer's Stamp

Information correct as of April 2025.



Epson Helpline: For product info or service- 1800 425 0011
For service: 1800 123 001 600 or 1860 3000 1600 (9 am - 6 pm) (Mon - Sat)
Email: projector@eid.epson.co.in

www.epson.co.in

Dealer's Stamp

COMPACT PROJECTION SOLUTION FOR ALL YOUR BUSINESS NEEDS.



A power-packed solution for business, education, as well as projection signage and entertainment.

Epson's versatile and compact EB-L530U/L630U/L630SU/L730U series projectors are loaded with endless possibilities to project vivid and sharp images from 5,200 lumens up to 7,000 lumens^{*3} to your audience. Features such as center-lens placement, 360° installation, and a wide range of connectivity translates to a flexible and performance-focused projection solution to suit all your needs.



WUXGA Resolution



0.80 - 1.07^{*1}
& 1.35 - 2.20^{*1}



Laser Light Source



Built-in Wireless^{*2}



Flexible Installation



Edge Blending Technology



Wireless Projection



Manual Lens Shift^{*2}



Superb Image Quality

High brightness projection of up to 7,000 lumens^{*3} with laser light source and WUXGA resolution.

Compact & Flexible

Lightweight yet durable body with a myriad of installation options.

Seamless Connectivity

Enjoy convenience in projection via wireless connections without troublesome settings.

Massive and Brilliant. Stunning images beyond FULL HD.

Immerse in a stimulating and dynamic viewing experience with WUXGA resolution. Captivate your audience in lectures and meetings, impress your customers in stores, and maximise your reach at larger venues.

Superb Resolution
WUXGA, 1920x1200

High Brightness
Up to 7,000 lumens^{*1}

Large Screen Size
Up to 500" ^{**2}

High Contrast Ratio
Over 50,00,000:1

Laser Light Source
Up to 20,000^{*3}
maintenance free hours



^{*1} For EB-L730U. Brightness for EB-L630U is 6,200 lumens, EB-L630SU is 6,000 lumens, EB-L530U is 5,200 lumens.

^{*2} Except EB-L630SU. Maximum screen size for EB-L630SU is 200 inch.

^{*3} 20,000H life for Laser light source: Approximate time until brightness decreases 50% from first usage. Measured by acceleration test assuming use of 0.04 - 0.20 mg/m3 of particulate matter. Time varies depending on usage conditions and environments. Replacement of parts other than the light source may be required in a shorter period.



Fascinate more with super-resolution

Project detailed and crisp images with the Image Enhancement function. With a few simple steps, deliver enthralling, clear projections and level up your presentations.



With super-resolution

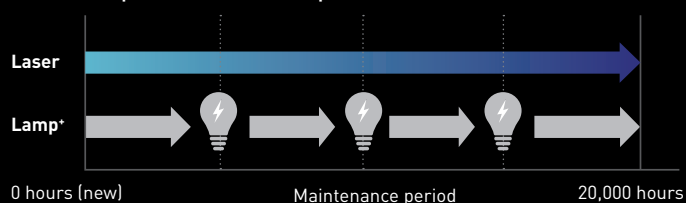


Without super-resolution

Save both your wallet and the environment

Without the need for lamp replacements and lower power consumption than its peers, enjoy higher savings while saving the earth with Epson's laser projectors. Do more with your maintenance-free laser projector, which runs on approximately 20,000 hours*³ of laser light source.

Maintenance period of laser and lamp[^]



Eco Features

- Uses just 0.3 W of power in standby mode
- Projector optics employ lead-free lenses
- Unpainted plastic housing reduces the environment impact
- The flame retardants used in the plastic housing does not contain chlorine or bromine
- Laser light technology* eliminates the need for lamp replacements

* Compared with other conventional lamp projector that has lamp life of 5,000 hours.

[^] Approximate time until brightness decreases 50% from first usage. Measured by acceleration test assuming use of 0.04 - 0.20 mg/m³ of particulate matter. Time varies depending on usage conditions and environments.

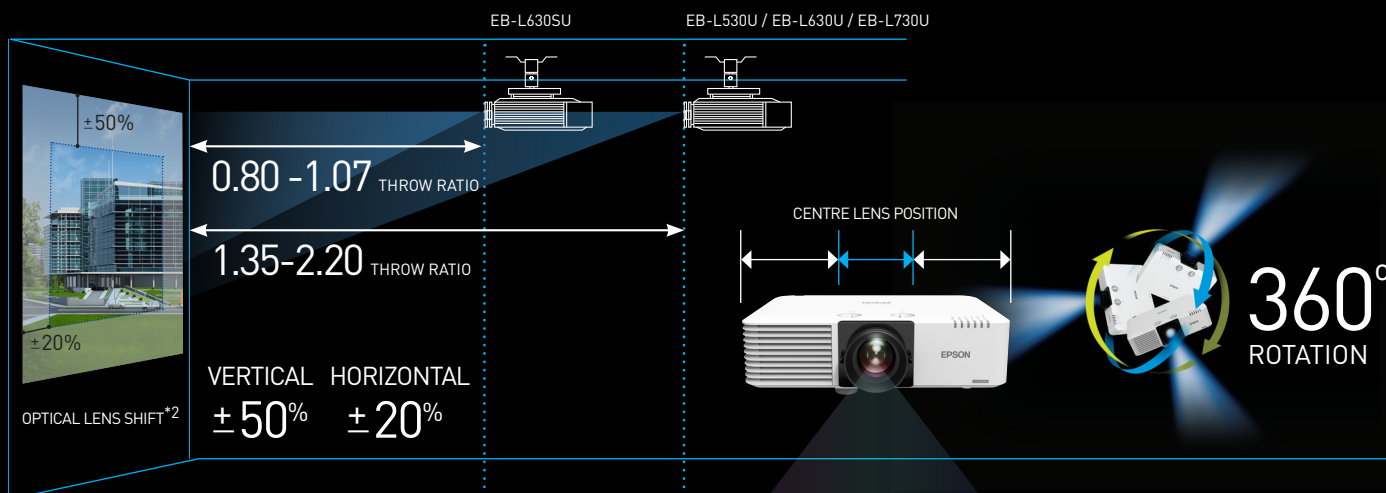
Better Products for a Better Future™

For more information on Epson's environmental programmes, visit <http://global.epson.com/SR/environment>.

Efficiency meets Flexibility.

Fuss-free installation and operation.

With a wide range zoom of up to 1.6x zoom ratio*¹ and flexible 360° installation, you can fit the compact Epson laser projector even in the tightest spaces, without compromising image quality. Alongside its versatile connectivity, maximise efficiency in meeting rooms and enhance the experience in retail storefronts.



Wide Range Zoom & Lens Shift
Up to 1.6x zoom ratio*¹

Short Throw Capability*³
80" screen at 1.38m
Perfect for tight spaces

Flexible Installation
Any direction in 360°

Versatile Connectivity
2 x HDMI & HDBaseT for
long distance transmission*⁴



*¹ Except EB-L630SU with no optical zoom, only 1.35x digital zoom.

*² Except for L530U which has no lens shift.

*³ For EB-L630SU only.

*⁴ HDBaseT can transmit Full HD video, audio and control at low cost through cat 5e/6 cables or higher, up to 100 metres. Ideal for large venues.



Seamless multiple projection

Blend multiple projections seamlessly and easily into one large screen for maximum reach through Daisy-chaining with HDMI-out port. Correct any screen distortion quickly with the built-in geometric correction and edge blending function.



Customisable content playback

Create personalised content easily onto any desired surface with the built-in playback function. Upload your content wirelessly or simply connect and start projecting fuss-free. Ideal for projection signage at storefronts or places of interest.



Retail signages



Event signages



Project wirelessly

With built-in wireless connectivity, easily share content from your smart devices or PC using the Epson iProjection app.

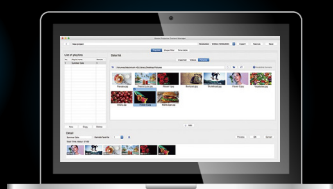
Schedule and edit your playlist, convert movie formats, and manage data directly through Epson Content Manager.



Epson Projector
Content manager



Epson
iProjection



Miracast support

With Miracast, you can now project Full HD videos and content wirelessly from compatible smart devices and laptops without additional software installation. With the screen mirroring* support, projecting from your smart devices has never been easier.

* If the Miracast function is activated, other network features will be disabled.



SPECIFICATIONS

MODEL NUMBER		EB-L530U		EB-L630U	
SKU Number		V11HA27056		V11HA26056	
Projection Technology		RGB Liquid Crystal Shutter Projection System (3LCD)			
Specifications of Main Parts					
LCD	Size	1.70 cm (0.67") (C2 Fine)			
	Resolution	WUXGA			
	Aspect Ratio	16:10			
Projection Lens	Type	Optical Zoom (Manual) / Focus (Manual)			
	F-Number	1.50 – 1.70			
	Focal Length	20 – 31.8 mm			
	Zoom Ratio	1.0 - 1.60			
Lightsource	Throw Ratio	1.35 – 2.20 (Wide - Tele)			
	Type	Laser Diode			
	Life	20,000 hours (Normal) / 30,000 hours (Extended)			
Screen Size (Projected Distance)					
Zoom: Wide		50" - 500" [1.44 - 14.76 m]			
Zoom: Tele		50" - 500" [2.35 - 23.84 m]			
Brightness ¹					
White Light Output (Normal / Extended)		5200 lm / 3640 lm		6200 lm / 4340 lm	
Colour Light Output (Normal)		5200 lm		6200 lm	
Light Output (Center) ²		5600 lm		6500 lm	
Contrast Ratio					
Over 50,00,000:1					
Internal Speaker(s)					
Sound Output		10 W Monaural			
Keystone Correction					
Projection Orientation		360° Free			
Vertical / Horizontal		± 30° / ± 30°			
Connectivity					
Analog RGB Input	D-Sub 15Pin	2			
Digital Input	HDMI	2 (HDCP 2.3)			
Audio Input	Stereo Mini Jack	2			
USB Input	USB Type A	1 (For PC Free, Firmware Update and Copy OSD Settings)		2 (1 Port for PC Freem Firmware Update and Copy OSD Settings.Port 2 for 5V/2A power supply, no USB function)	
	USB Type B	1 (For Mouse, K/B, Control and Firmware Update)			
Control I/O	RS-232C	D-Sub 9Pin x 1			
Analog Video Output	D-Sub 15Pin	1			
Digital Video Output	HDMI	1 (HDCP 2.3)			
Audio Output	Stereo Mini Jack	1			
Network	Wired LAN	RJ45 x 1 (100 Mbps)			
	Built-in Wireless	Yes			
Wireless LAN (In-Built) and Screen Mirroring					
Supported Speed for Each mode		Infrastructure: IEEE 802.11b (2.4 GHz): 11 Mbps ³ , IEEE 802.11g (2.4 GHz): 54 Mbps ³ , IEEE 802.11n (2.4 GHz): 72.2 Mbps ³ , IEEE 802.11a (5 GHz): 54 Mbps ³ , IEEE 802.11n (5 GHz): 150 Mbps ³ , IEEE 802.11ac (5 GHz): 325 Mbps ³ Access Point (Wi-Fi Direct): IEEE 802.11g (2.4 GHz): 54 Mbps ³ , IEEE 802.11n (2.4 GHz): 72.2 Mbps ³ , IEEE 802.11a (5 GHz): 54 Mbps ³ , IEEE 802.11n (5 GHz): 150 Mbps ³ , IEEE 802.11ac (5 GHz): 325 Mbps ³			
Supported Mode		Infrastructure, Access Point (Wi-Fi Direct)			
Supported Security Type		Infrastructure: OPEN (WPA2/WPA3-PSK/ WPA2/WPA3-EAP) Supported EAP Type: PEAP, PEAP-TLS, EAP-TLS, EAP-Fast Access Point (Wi-Fi Direct): WPA2-PSK (AES)			
Wireless LAN (Using Optional ELPAP11)					
Supported Speed for Each mode		N/A		Access Point (Wi-Fi Direct): IEEE 802.11g (2.4 GHz): 54 Mbps ³ , IEEE 802.11n (2.4 GHz): 72.2 Mbps ³ , IEEE 802.11a (5 GHz): 54 Mbps ³ , IEEE 802.11n (5 GHz): 150.0 Mbps ³ , IEEE 802.11ac (5 GHz): 325 Mbps ³ Access Point (Wi-Fi Direct) Access Point (Wi-Fi Direct): WPA2-PSK (AES)	
Supported Mode		N/A			
Supported Security Type		N/A			
Operating Temperature					
Single Use		Low Altitude (0 - 2286m / 7500 ft): 0 - 45°C <32 - 113°F> High Altitude (Over 2286 m / 7500 ft to 3048 m / 10,000 ft): 0 - 40°C <32 - 104°F> 20% - 80% Humidity (No Condensation)			
Multi-projection Use		Low Altitude (0 - 2286 m / 7500 ft): 0 - 40°C <32 - 104°F> High Altitude (Over 2286 m / 7500 ft to 3048 m / 10,000 ft): 0 - 35°C <32 - 95°F> 20% - 80% Humidity (No Condensation)			
Operating Altitude					
		Over 1500 m / 4921 ft with High Altitude Mode: 0 - 3048 m (0 -10,000 ft)			
Direct Power On / Off					
		Yes			
Start-Up Period					
		8 seconds (Epson Logo); Warm-up Period: 30 seconds			
Quick Start-Up					
		Less than 5 seconds (Display)			
Cool Down Period					
		Instant Off			
Air Filter					
	Type	Electrostatic Filter			
	Maintenance Cycle ⁴	20,000 hours (Normal) / 30,000 hours (Extended)			
Power Supply Voltage					
100 - 240 V AC ±10%, Frequency: 50/60 Hz					
Power Consumption (220 - 240V)					
Laser Diode On (Normal / Extended)		293 W / 223 W		345 W / 258 W	
Standby (Normal / Eco)		2.0 W / 0.3 W			
Dimension Excluding Feet (D X W X H)					
		304 x 440 x 122 mm			
Weight					
		Approx. 7.7 kg		Approx. 8.4 kg	
Fan Noise (Normal / Eco)					
		31 dB / 23 dB		38 dB / 27 dB	

- Supplied Accessories
- Power Cable: 3m
- HDMI Cable: 1.8m
- Remote Control: Yes, with Alkaline AA Battery
- Cable cover (Only for EB-L630U)
- User guide
- Optional Accessories
- Air Filter: ELPAF56
- HIDBaseT Transmitter: ELPHD02
- Safety Wire Set: ELPWR01



© 2025 Epson India Pvt. Ltd. All Rights Reserved. Reproduction in part or in whole, without the written permission from Epson, is strictly prohibited. EPSON is registered trademark of Seiko Epson Corporation. All other products names and other company names used herein are for identification purposes only and are the trademarks or registered trademarks of their respective owners. Epson disclaims any and all rights in those marks. Print samples shown are simulations only. Specifications and product availability are subject to change without notice and may vary between countries. Please check with local Epson offices for more information.

Apple, iPad and iPhone are trademarks of Apple Inc., registered in the U.S. and other countries. App Store is a service mark of Apple Inc.

Android is a trademark of Google Inc.

Dealer's Stamp

Information correct as of April 2025.

¹ Colour brightness (colour light output) and white brightness (white light output) will vary depending on usage conditions. Colour light output measured in accordance with IDMS 15:4; white light output measured in accordance with ISO 21118.

² This light output value is measured at the center of the screen as a reference value which is equivalent to lumens. There is no official standard for Light Output (Center) measurements and this measurement is made based on the method set by Epson. Please note, each manufacturer measures Light Output (Center) independently according to their own methods and therefore it is recommended to refer to Color Light Output measured in accordance with IDMS 15.4 and White Light Output measured in accordance with ISO 21118 when selecting and comparing projectors.

³ These modes and actual data throughputs depend on supported wireless mode of source devices and/or environment conditions.

⁴ When used in the general office environment (the amount of floating dust: 0.04 - 0.2 mg/m³). Based on the Epson's in-house test results.