

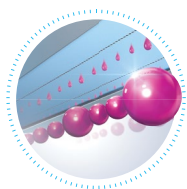
REDEFINING VIBRANCY IN FABRIC PRINTS



SC-F9430



SC-F9430H



Leading the Industry with Dynamic Fluorescent Printing.

The Epson SureColor SC-F9430 and SC-F9430H offer fluorescent* brightness and colour density like never before, giving life to print applications such as fabric flags, fast fashion, and home furnishings such as curtains and cushions.

*Fluorescent printing is only applicable with the Epson SureColor SC-F9430H

IT'S IN THE DETAILS.

EPSON

LARGE FORMAT PRINTERS
SureColor SC-F9430 & SC-F9430H

Pave the way to dynamic fabric prints with Epson's fluorescent* textile printers. With the PrecisionCore printhead technology, you get precise control, resulting in the highest print quality and improved operational reliability. On-demand printing also presents the flexibility to deliver custom outstanding and vivid fabric designs in short print runs.

*Fluorescent printing is only applicable with the Epson SureColor SC-F9430H



New Dye-sub Fluorescent Ink

Epson's new genuine fluorescent dye-sub ink encompasses both fluorescent yellow and fluorescent pink ink to give you bright, consistent and high quality vivid prints on many types of fabric.



Epson's First Dye-sub
 Genuine Fluorescent Ink

Epson Edge Print

Achieve striking prints with fluorescent yellow and pink on fabric with Epson's first genuine dye-sublimation ink solutions using the Epson Edge Print software.

Epson Edge Print

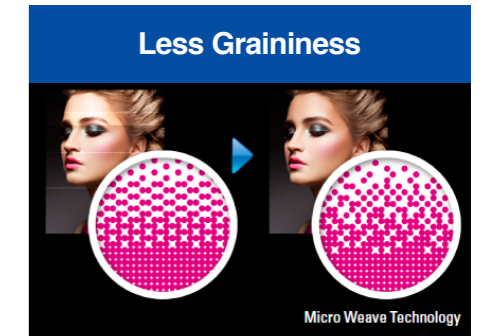
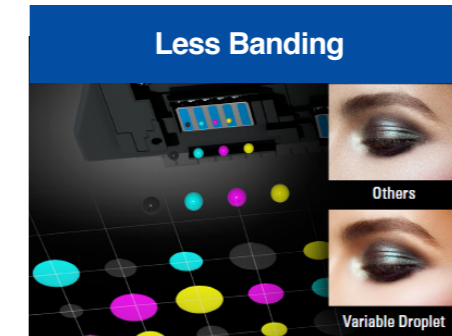
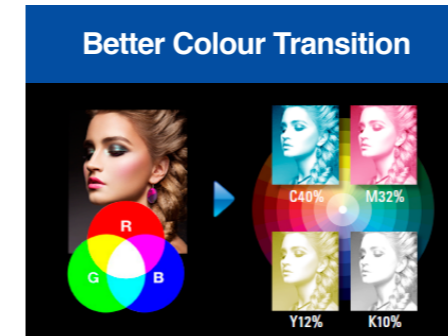
Ease of Maintenance

Simply scan a QR code located on the printer and you will have a video instruction on the printer's maintenance process.



High Quality Prints

With Epson's PrecisionDot Technology, our printers can produce high print quality with better colour transition, less banding, and less graininess.



Fluorescent for Vibrantly Outstanding Prints

With the introduction of a genuine fluorescent solution, Epson's SC-F9430H offers fluorescent brightness and colour density like never before, giving life to print applications such as fabric flags, fast fashion, and home furnishings such as curtains and cushions.



Developed primarily for fast and high-volume printing of textiles, the Epson SC-F9430H also offers businesses the option of printing with two genuine fluorescent ink solutions (yellow and pink), bringing bright, vivid colours to the production of fabric flags, fast fashion, and home furnishings such as curtains and cushions. The SC-F9430 series is an evolution of trusted Epson print technology and provides enhanced quality with even greater productivity and reliability.

SPECIFICATIONS

SureColor SC-F9430 & SC-F9430H



MODEL NUMBER	SC-F9430 (C11CJ00403)	SC-F9430H (C11CH99403)
Printer Width	64"	
Printing Technology	Dual PrecisionCore™ TFP® Printhead	
Printhead	360 nozzles x 4 channels x 2 head 360 nozzles x 5 channels x 2 head	
Nozzle Configuration	720x1440 dpi	
Print Speed		
Production (2 pass)	Up to 60.1 m ² /h (720 x 720 dpi)	Up to 62 m ² /h (360 x 720 dpi)
Production (4 pass)	Up to 29.9 m ² /h (720 x 720 dpi)	Up to 32.1 m ² /h (720 x 720 dpi)
Production (6 pass)	Up to 20.7 m ² /h (720 x 1440 dpi)	Up to 21.9 m ² /h (720 x 720 dpi)
Production (8 pass)	Up to 15.6 m ² /h (720 x 1440 dpi)	Up to 15.8 m ² /h (720 x 720 dpi)
Ink System		
Ink Type	Epson UltraChrome™ DS dye-sublimation ink	Epson UltraChrome™ DS6 dye-sublimation ink
Colours	4 colours - Cyan, Magenta, Yellow, High Density Black	6 colours - Cyan, Magenta, Yellow, High Density Black, Fluorescent Yellow, Fluorescent Pink
Ink Capacity	Cyan, Magenta, Yellow, High Density Black: 1100ml ink pouch Fluorescent Yellow, Fluorescent Pink: 1000ml ink pouch	
Paper Handling		
Paper Handling	Rear roll feed (2"/3" core with max 250mm diameter and up to 45kg); Auto take-up reel	
Printable Area	Max printing width: 1615.6mm; Side Margin: 5mm both sides, 10mm with media holding guides	
Media Width	300.0 mm (11.8") - 1625.6 mm (64")	
Media Thickness	Up to 1 mm	
Control Panel	2.7" Colour LCD	
Connectivity		
Printer Interfaces	Hi-Speed USB, 100BASE-TX / 1000BASE-T	
Printer Languages	Standard: ESC/P raster	
Memory	512MB main + 128MB network	
Software	Bundled in CD (Windows Only): CD installer, Epson communication Driver, Epson manual Launcher, Operators Guide, General Information, Epson Control Dashboard, EpsonNet Setup, EpsonNet Config, EpsonNet Print, Software Updater, DVD(Epson Edge Print bundle SKU only) Epson Edge Print, Epson Control Dashboard, Epson Communication Driver Web Delivery (Mac and Windows): Windows and Mac: CD installer, Epson communication Driver, Epson manual Launcher, Operators Guide, General Information, Epson Control Dashboard, EpsonNet Setup, EpsonNet Config, EpsonNet Print, Software Updater, LFP Accounting Tool	
Power and Operating Requirements		
Power Requirements	AC 100-120V AC200-240V 50/60Hz	
Power Consumption	Operating: Approx. 570W; Ready: Approx. 340 W; Sleep: Approx. 14 W; Power Off: Approx. 1.0 W	Operating: Approx. 600W; Ready: Approx. 380 W; Sleep: Approx. 14 W; Power Off: Approx. 1.0 W
Recommended Operating Temperature & Humidity	Operating: 15°C to 35°C, Storage: -20°C to 60°C	
Printer Dimensions		
Dimensions	2,620 x 934 x 1,332 mm (WxDxH)	
Weight	290kg (without ink)	
Bundled Items	Substrate Support System and Ink Supply System (C12C934951), Initial Ink Pack Set 10 (C12C934741) x2	Substrate Support System and Ink Supply System (C12C934971), Initial Ink Pack Set 10 (C12C934741) x2, Initial Ink Pack Set 11 (C12C934991) x1
Warranty	1 year	

Dimensions & Weight

SC-F9430 (C11CJ00403)
Weight: 290kg (without ink)



Ink Cartridge Compatibility

1.1L Ink Packs

- High Density Black C13T46H800
- Cyan C13T46H200
- Magenta C13T46H300
- Yellow C13T46H400

SC-F9430H (C11CH99403)

Weight: 290kg (without ink)



Ink Cartridge Compatibility

1.1L Ink Packs

- High Density Black C13T46H800
- Cyan C13T46H200
- Magenta C13T46H300
- Yellow C13T46H400

1L Ink Packs

- Fluorescent Yellow C13T46H600
- Fluorescent Pink C13T46H500

Supplies & Optional Accessories

Maintenance Kit	C13S210063
Head Cleaning Set	C13S210051
	C13T724000
Cleaning Stick	C13S090013
Clean Room Wiper	C13S090016



ECO PASSPORT

NEP 1902
Nissenken

www.oeko-tex.com

ST Ink

© 2023 Epson India Pvt. Ltd. All Rights Reserved. Reproduction in part or in whole, without the written permission from Epson, is strictly prohibited. EPSON and EXCEED YOUR VISION are registered trademarks of Seiko Epson Corporation. All other product names and other company names used herein are for identification purposes only and are the trademarks or registered trademarks of their respective owners. Epson disclaims any and all rights in those marks. Print samples shown are simulations only. Specifications and product availability are subject to change without notice and may vary between countries. Please check with local Epson offices for more information.

Dealer's Stamp

Information correct at time of printing Printed September 2023

Dealer's Stamp

EPSON INDIA PVT. LTD.

12th Floor, The Millenia, Tower A, No.1
Murphy Road, Ulsoor, Bangalore 560 008
Tel: 080-4566 5000, Fax: 080-4566 5005

Scan the QR code or Click here to contact an Epson representative close to you.



CONTACT EPSON TODAY! EMAIL: vasu@eid.epson.co.in



Epson Helpline: For product info or service - 1800 425 0011
For service: 1800 123 001 600 (9AM - 6PM) (Mon-Sat)
Email: lfp@epsonindia.in